

UpRight AB62RT



boom lift

rough terrain articulated

Working height up to 20.9m (68ft.) horizontal outreach to 10.7m (35ft.) with up and over clearance of 9.1m (30ft.)

75 seconds to full extension

Multi-function proportional controls for smooth, fast positioning

22° (40%) gradeability

Zero tail swing

4WD with oscillating front axle

Jib pivots above and below upper boom

Dual parallelogram riser allows platform to move vertically parallel to wall

Choice of 1.8m (6ft.) or 2.4m (8ft.) platform

Five year structural warranty



specifications

AB62RT 4WD Diesel

working height (A)	20.9m. (68ft.)*
platform height (B)	18.9m. (62ft.)
horizontal outreach	10.7m. (35ft.)
up/over clearance	9.1m. (30ft.)
jib length	1.9m. (6ft. 4ins.)
jib arc	140°
1.8m (6 ft.) platform size -	outside 1.0m. (39ins.) x 1.83m. (72ins.)
2.4m (8 ft.) platform size -	outside 1.0m. (39ins.) x 2.4m. (96ins.)
platform capacity 6ft. or 8ft. (max)	227kg (500lbs.)
platform rotation	180°
turret rotation	continuous
stowed height (C)	2.5m. (8ft. 2ins.)
stowed length (D)	8.2m. (27ft.)
stowed width (E)	2.3m. (7ft. 7.5ins.)
inside turning radius	2.5m. (8ft.)
outside turning radius	5.5m. (18ft.)
tailswing - stowed	0
drive speed - boom stowed, high	6.8km/h. (4.25mph.)
- boom stowed, low	2.6km/h. (1.6mph.)
drive speed - boom elevated	0.96km/h. (0.6mph.)
gradeability	22° (40%)
energy source	perkins 704-30
tyres.	poly-filled
ground clearance	0.32m.(12.5ins.)
toeboards	152mm. (6ins.)
guardrail height	1.14m. (45ins.)
weight	10,750kg. (23,700lbs.)
cycle time to full height	75 secs.

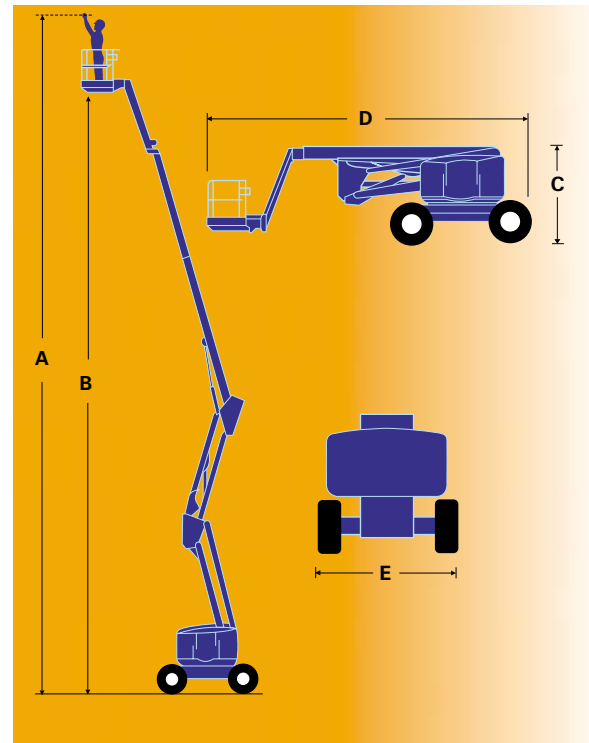
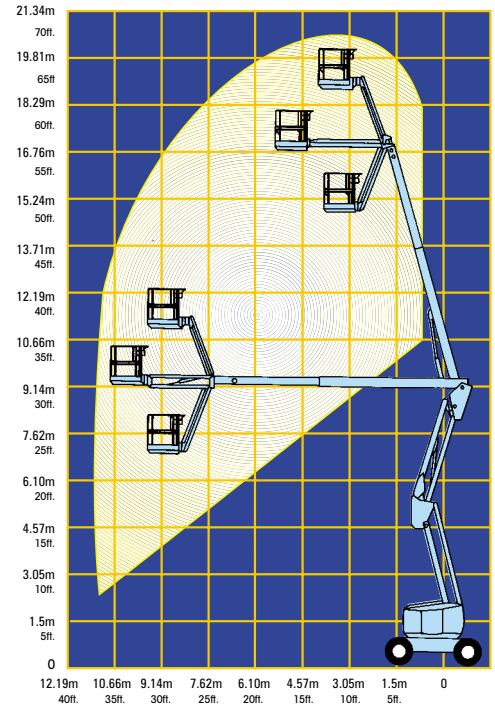
* Metric working height is 2m above platform height. Working height in the U.S. is 6 ft. above platform height.
 Specifications subject to change without notice. Photos and diagrams in this brochure are for promotional purposes only. Refer to appropriate UpRight Operators manual for detailed instructions on the proper use and maintenance of this equipment.

standard features

- Multi-function platform controls
- Oscillating front axle
- Electric proportional controls
- Power to platform
- Hour meter
- 1 year parts/service
- 5 year structural warranty

options

- All motion alarm
- Flashing amber beacon
- 2.4m. (8 ft.) platform
- Generator
- Air-filled tyres
- Special paint colours
- Environmental green oil



manufactured by

UpRight

Meets or exceeds applicable requirements of OSHA and ANSI A92.5 - 1992.	
CE	This product is available with the CE mark confirming compliance with all relevant European Machinery Directives

UpRight

www.upright.com
 e-mail: marketing@upright.com

GLOBAL PROVIDER OF ACCESS SOLUTIONS

MANUFACTURING

North America
 Tel +1 (559) 662 3900
 Fax +1 (559) 673 6184

Europe
 Tel + 353 1 620 9300
 Fax + 353 1 620 9301

SALES

USA / The Americas
 Tel +1 (559) 662 3900
 Fax +1 (559) 673 6184

Europe/Africa/M. East
 Tel + 44 (0) 1952 685 200
 Fax + 44 (0) 1952 685 255

France
 Tel + 33 130 37 05 44
 Fax + 33 130 37 63 68

Germany
 Tel + 49 211 1674316
 Fax + 49 211 1674317

Singapore
 Tel + 65 6324 1322
 Fax + 65 6225 5157

Australia
 Tel + 61 2 9748 6200
 Fax + 61 2 9748 6255

P. R. China
 Tel + 86 21 63390190
 Fax + 86 21 63390191

Japan
 Tel + 81 3 5765 6841
 Fax + 81 3 5765 6840