

# Telescopic Boom Lift

**UpRight**  
POWERED ACCESS



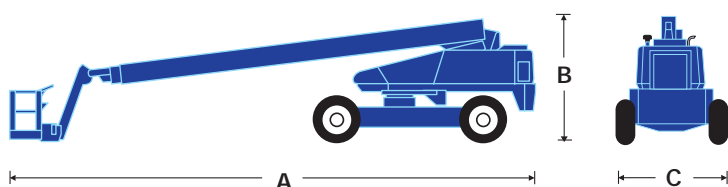
- ☐ 27.9m max. working height
- ☐ 23.4m max. outreach
- ☐ 1.8m, 140° jib
- ☐ 170° hydraulic powered platform rotation
- ☐ Driveable at full height
- ☐ Proportional control of drive, boom lift and slew
- ☐ 4 wheel drive and steer, including crab steer

**SB85J**

# SB85J boom lift specifications

	SB85J
max. working height	27.9m
max. platform height	25.9m
max. outreach	23.4m
platform capacity (SWL)	227kg
platform size	0.76m x 2.44m
platform rotation	170°
jib length	1.8m
jib working arc	140°
overall width	2.6m
operational width	2.6m
overall length A	12.9m
lowered height B	2.9m
min. transport length	12.9m
gross weight	17,100kg
inside turning radius	2.4m
max. drive speed (lowered)	4.8kmh
ground clearance	330mm
gradeability	45%
tyres	15 x 625 loader lug poly filled
drive system	4 wheel drive
controls	joystick proportional drive, lift and slew/ rheostat other boom functions
power source	Deutz F4L-2011 air cooled diesel 64hp

Specifications subject to change without notice. Photos and diagrams in this brochure are for promotional purposes only. Refer to appropriate UpRight operators manual for detailed instructions on the proper use and maintenance.



BP2 SB85J 6/09

**UpRight**  
**POWERED ACCESS**

Vigo Centre, Birtley Road, Washington,  
Tyne & Wear, NE38 9DA, U.K.

Sales Tel: +44 (0) 845 1550 057 • Spare Parts Tel: +44 (0) 845 1550 058

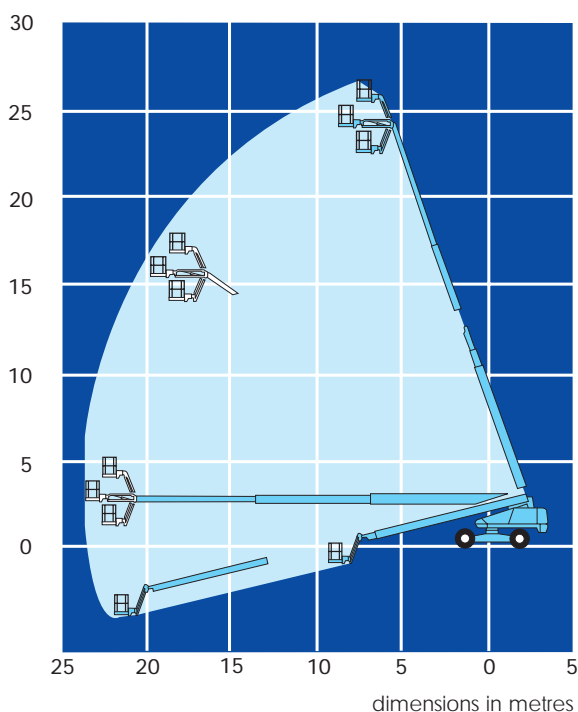
[www.upright.com](http://www.upright.com)

## standard features

- 1.8m, 140° jib
- Hydraulic powered platform rotation
- 4 wheel drive
- 4 wheel steer, including crab steer
- Proportional control of drive, boom lift and slew
- Foam filled lug tyres
- Driveable at full height
- Operator horn
- Extra finger protection handrail
- 1 year parts and labour warranty
- 5 year structural warranty

## options

- Hydraulic generator
- Platform control box cover
- Twin platform work lights
- Airline to platform
- Amber beacon on boom
- Swing gate in lieu of drop bar
- Sand blast protection kit
- Driving lights
- Cold weather start kit
- Hydraulic system cold weather warm-up kit
- Drive motion alarm
- Towing package



**CE** This product is available with the CE mark confirming compliance with all relevant European Machinery Directives

manufactured by  
**UpRight**  
**POWERED ACCESS**