

UpRight

XL-24



SELF-PROPELLED LIFTS

- 9.2m (30ft) working height
- Up to 453kg (1,000lbs) platform capacity
- Compact, manoeuvrable, tightest turning radius[†]
- Electric power
- Proportional drive and lift controls for smooth, precise operation
- Optional cantilever cage for overreach
- Optional Roll-out deck extension



[†] Patented Upright Feature

XL-24

SELF-PROPELLED LIFTS

FEATURES AND SPECIFICATIONS (All Models)

- Working height: 9.2m (30ft)
- Platform height: maximum 7.32m (24ft)
minimum 1.27m (50in.)
- Driveable height: 7.32m (24ft)
- Platform size: 1.22m x 2.26m (48in. x 89in.)
- Control system: proportional, single axis joystick with thumb rocker steering. Foot-operated interlock switch
- Overall height 2.37m (93.5in.), 2.01m (79in.) with guardrails folded.
- Turning radius (inside): 610mm (24in.)[†]
- Lift speed: raise 35 sec./lower 45 sec.
- Drive speeds: maximum 3.7kph (2.3mph) with platform raised 1.13kph (0.7mph)
- Gradeability: 25%
- Drive: dual front wheel hydraulic motors
- Braking: 2 wheel hydraulic
- Parking brake: spring applied, hydraulic released
- Tyres: 410mm (16in.) diameter solid rubber
- Energy source: 24V battery pack, 4HP DC electric motor, 4-220 ampere hour batteries
- Battery charger: 25 amp fully automatic
- Guardrails: fold down with self-closing gate, 1.11m (43.5in.) high
- Toeboards: 150mm (6in.)
- Descent alarm
- Hour meter
- Battery condition indicator

OPTIONAL FEATURES

- Inboard mounted scissor guard
- Dual Power - Diesel & Propane recharging generator
- Cantilever cage extension *1.83m (6ft)
- Roll-Out deck extension **0.81m (2ft 8in.)
- Wiring for power at platform
- Flashing amber beacon ■ Reverse alarm
- Removable controller
- Poly filled flotation tyres (16.5 x 6.5 x 8)

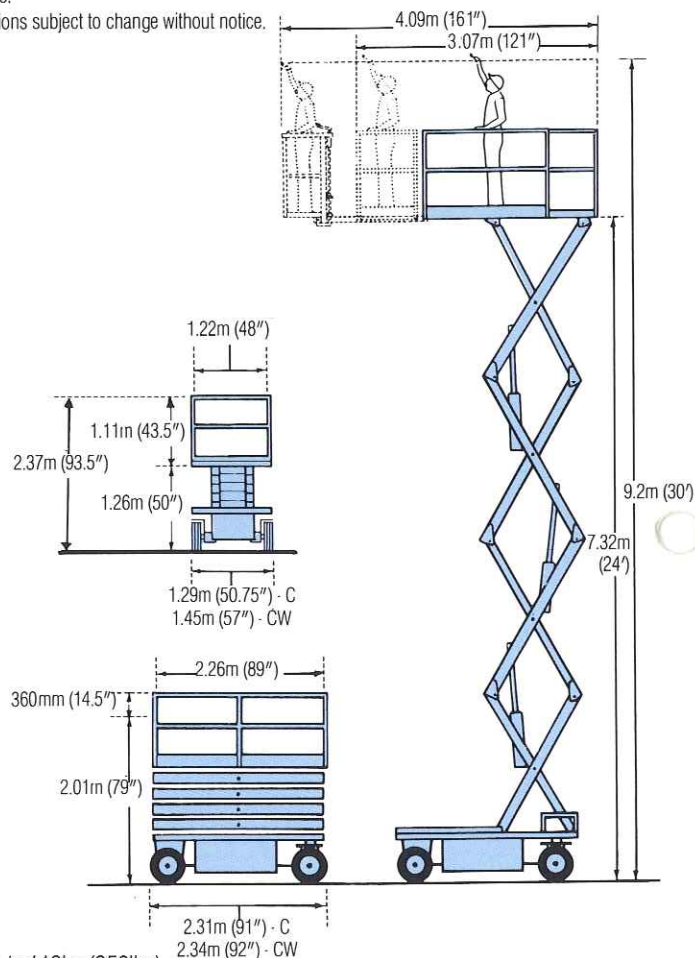
[†] Patented Upright Feature *Maximum capacity in cage or on deck extension is 113kg (250lbs)

FEATURES AND SPECIFICATIONS (Specific Models)

Item	XL-24C		XL-24CW	
Maximum Platform Capacity	340kg	750lbs	453kg s.	1,000lbs
Overall Width	1.29m	50.75in.	1.45m	57in.
Overall Length	2.31m	91in.	2.34m	92in.
Weight	1,509kg	3,320lbs	1,447kg	3,195lbs

Meets or exceeds applicable requirements of OSHA, ANSI A92.6 - 1990/DIN/BS and all international regulations.

Specifications subject to change without notice.



UpRight

EUROPE (353) 1 - 2853333

Pottery Road, Dun Laoghaire, Ireland.

USA (800) 926-5438

1775 Park St., Selma, CA 93662.

CANADA (800) 461-4901

108 Industrial Dr., Whitby, Ontario, Can L1N5Z8.