

SERVICE BULLETIN

Machines/Models: X20W and X26N **Serial Nos.:** 1011-1739
Work Platforms

Page 1/3

SERVICE BULLETIN: 94.13.1, THE INSTALLATION OF THIS KIT IS MANDATORY! THIS KIT MUST BE INSTALLED AT THE NEXT SERVICE INTERVAL OR WITHIN THE NEXT 30 DAYS!

DATE: March 1, 1995

PURPOSE: Notification of requirement to replace the lift cylinder on X20W and kicker arm and lift cylinder on X26N machines.

OPERATION REQUIRED: Replacement of existing lift cylinder with new cylinder. On X26N machines the kicker arm assembly is also replaced.

PARTS REQUIRED:	X20W	X26N
	Cylinder Kit, 30751-000	Cylinder Kit, 30743-000
	1 ea., 66601-000, lift cylinder	1 ea., 66601-000, lift cylinder
	2 ea., 11764-032, retaining ring	1 ea., - , kicker arm assy.
		2 ea., 11740-024, roll pin
		2 ea., 11764-032, retaining ring

REIMBURSEMENT: Installation will take less than one (1) hour. UpRight will reimburse you for one (1) hour labor at your shop rate. UpRight will also reimburse the owner of each unit for reasonable travel time at the rate of US \$25.00 per hour. **Reimbursement will be made by UpRight upon receipt of the original lift cylinder and a properly completed warranty claim form.**

PROCEDURE: X20W on page 2, X26N on page 3.

If you have any questions regarding this Service Bulletin, please contact the UpRight Product Support Department at (800) 926-5438, in the USA; (209) 896-5150, outside the USA; or by FAX at (209) 896-9244

SERVICE BULLETIN

Machines/Models: X20W and X26N Serial Nos.: 1011-1739
Work Platforms

Page 2/3

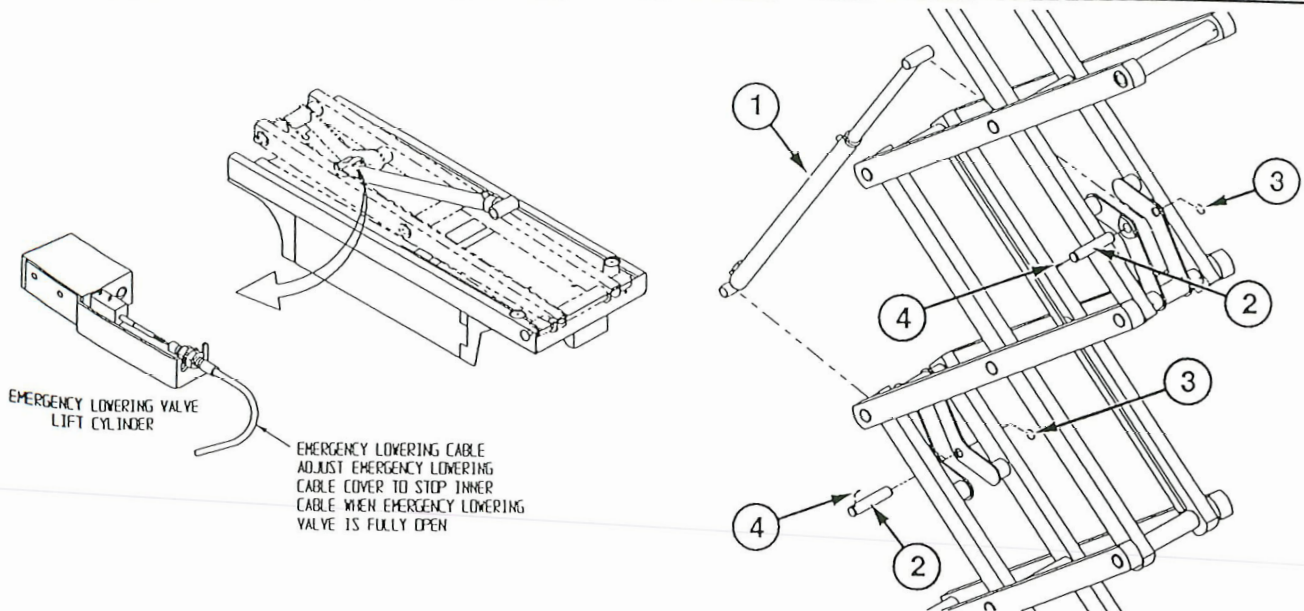


Figure 1
X20W Lift Cylinder Installation

PROCEDURE: X20W

NOTE: Read all instructions before starting. Refer to Figure 1 to aid in the installation.

Removal

1. Elevate platform and install scissor brace.
2. Provide a suitable container to catch the hydraulic fluid, then disconnect the hydraulic hoses from the cylinder. Immediately plug hoses to prevent foreign material from entering.
3. Remove emergency lowering valve cable and down valve wires from the emergency lowering/down valve.
4. Remove retaining rings securing lift cylinder pivot pins.
5. Remove lower pivot pin by driving pin towards locking pin side. Lower cylinder to rest on chassis.
6. Attach a suitable hoisting device and sling to the cylinder and remove upper pivot pin.
7. Carefully remove cylinder.
8. Remove down valve, straight fitting and orifice from the old cylinder.

Installation

1. Install orifice, beveled end first, into down valve cavity in the new cylinder. Install down valve and straight fitting onto new cylinder.
2. Attach a suitable hoisting device and sling to the cylinder. Carefully position cylinder in the elevating assembly and install the upper pivot pin. Make sure the locking pin fully engages the pivot and pin and install the new retaining ring.
3. Carefully lift the cylinder and align the lower mount and install the pivot pin. Make sure locking pin is properly installed then install the new retaining ring.
4. Connect the emergency lowering valve cable and down valve wires. Adjust the cable to bottom out when the emergency lowering valve is fully open.
5. Unplug hydraulic hoses and attach to the cylinder.
6. Replace hydraulic fluid removed from lift cylinder.
7. Test with weight at rated platform load to check system operation. Check for leaks and level of fluid.

If you have any questions regarding this Service Bulletin, please contact the UpRight Product Support Department at (800) 926-5438, in the USA; (209) 896-5150, outside the USA; or by FAX at (209) 896-9244

SERVICE BULLETIN

Machines/Models: X20W and X26N Serial Nos.: 1011-1739
Work Platforms

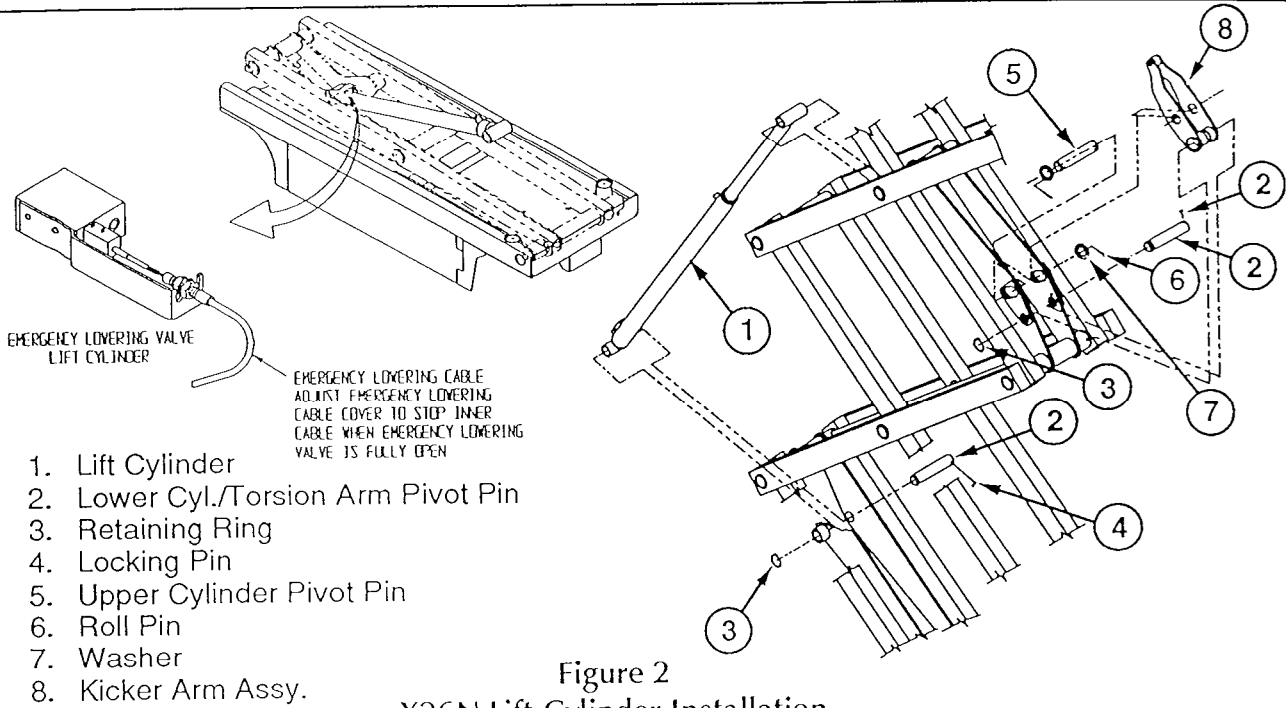


Figure 2
X26N Lift Cylinder Installation

PROCEDURE: X26N

NOTE: Read all instructions before starting. Refer to Figure 2 to aid in the installation.
Removal

1. Elevate platform and install scissor brace.
2. Provide a suitable container to catch the hydraulic fluid, then disconnect the hydraulic hoses from the cylinder. Immediately plug hoses to prevent foreign material from entering.
3. Remove emergency lowering valve cable and down valve wires from the emergency lowering/down valve.
4. Remove retaining ring securing lower lift cylinder pivot pin and the left roll pin in the upper pivot pin.
5. Remove lower pivot pin by driving pin towards locking pin side. Lower cylinder to rest on chassis.
6. Attach a suitable hoisting device and sling to the cylinder and remove upper Pivot Pin.
7. Carefully remove cylinder.
8. Remove down valve, straight fitting and orifice from the old cylinder.
9. Remove retaining ring securing torsion arm pivot pin.
10. While supporting torsion arm remove the pivot pin then the torsion arm.

Installation

1. Install orifice, beveled end first, into down valve cavity in the new cylinder. Install down valve and straight fitting onto new cylinder.
2. Install the new torsion arm and pivot pin. Make sure the locking pin fully engages the pivot and pin and install the new retaining ring.
3. Attach a suitable hoisting device and sling to the cylinder. Carefully position cylinder in the elevating assembly and install the upper pivot pin. Install the washer and new roll pin.
4. Carefully lift the cylinder and align the lower mount and install the pivot pin. Make sure locking pin is properly installed then install the new retaining ring.
5. Connect the emergency lowering valve cable and down valve wires. Adjust the cable to bottom out when the emergency lowering valve is fully open.
6. Unplug hydraulic hoses and attach to the cylinder.
7. Replace hydraulic fluid removed from lift cylinder.
8. Test with weight at rated platform load to check system operation. Check for leaks and level of fluid.

If you have any questions regarding this Service Bulletin, please contact the UpRight Product Support Department at (800) 926-5438, in the USA; (209) 896-5150, outside the USA; or by FAX at (209) 896-9244