

## SERVICE BULLETIN

**Machines/Models:** X-Series  
Work Platforms

**Serial Nos.:** 1000-1380

**SERVICE BULLETIN:** 94.8, THE INSTALLATION OF THIS KIT IS MANDATORY!

**DATE:** July 1, 1994

**PURPOSE:** Notification of requirement to replace Pothole Protection Spring Assemblies with dual spring assemblies and instructions for replacement.

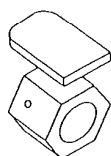
**OPERATION REQUIRED:** Replace Pothole Protection Spring Assemblies with dual spring assemblies.

**REIMBURSEMENT:** Installation will take less than 1 ½ hours. UpRight will reimburse you for up to 1 ½ hours of installation time at your shop rate. UpRight will also reimburse the owner of each unit for reasonable travel time at the rate of USD \$25.00 per hour. Reimbursement will be made upon receipt by UpRight of a properly completed warranty claim form.

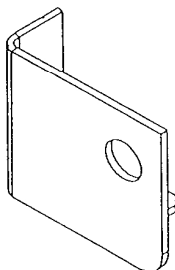
**PARTS REQUIRED:** 30711-003, X-Series Pothole Kit.

**Kit Includes:** 2 - 11737-008, Roll Pin, ¼ x 1  
2 - 11704-005, Set Screw, 5/16-18 x 5/16  
4 - 11753-014, Cotter Pin, 1/8 x 1 ¾  
1 - 66316-000, Spring Shaft  
2 - 66317-000, Spring Rotator, L.H.  
2 - 66318-000, Spring Rotator, R.H.  
1 - 66156-000, Spring Plate, R.H.  
1 - 66157-000, Spring Plate, L.H.  
2 - 66404-001, Cable Tie  
2 - 66172-000, Spring, Torsion, R.H.  
2 - 66173-000, Spring, Torsion, L.H.

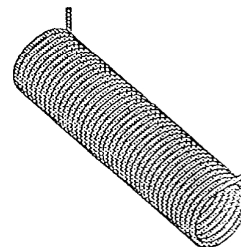
**Parts Identification:** Use the following drawings to help separate the parts into right and left hand.



66317-000,  
Spring Rotator, L.H.



66157-000,  
Spring Plate, L.H.



66173-000,  
Spring, Torsion, L.H.

If you have any questions regarding this Service Bulletin, please contact the UpRight Product Support Department at (800) 926-5438, in the USA; (209) 896-5150, outside the USA; or by FAX at (209) 896-9244

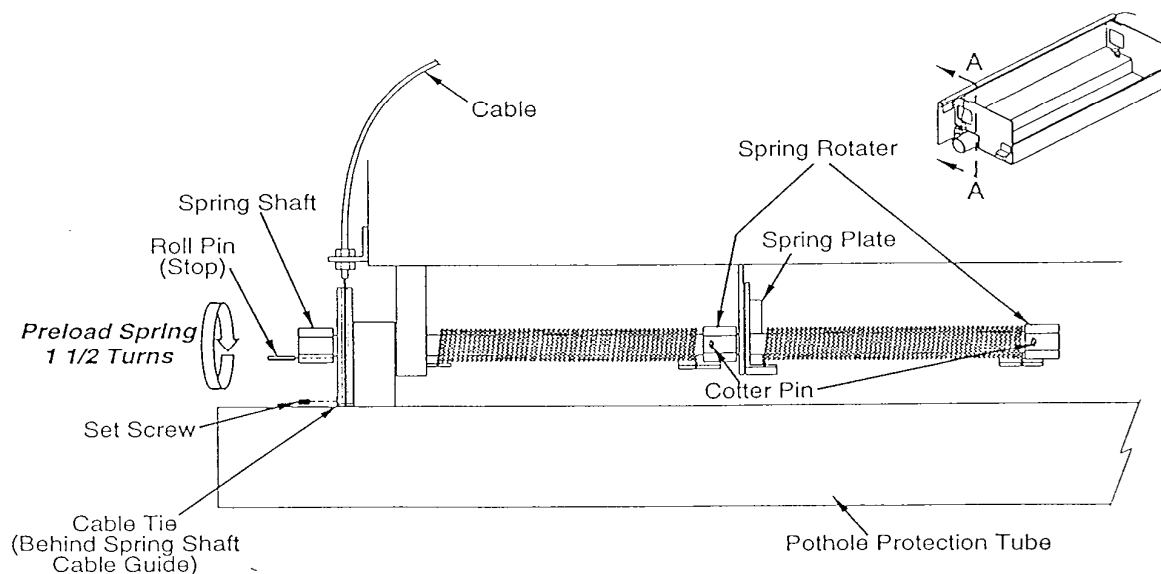
# SERVICE BULLETIN

**Machines/Models:** X-Series  
Work Platforms

**Serial Nos.:** 1000-1380

**PROCEDURE: NOTE: Read all instructions before starting. Separate parts listed as right hand and left hand.**

1. If possible park the machine next to a recessed loading dock (so the module door opens over the recessed area) or use a forklift to raise the machine 2-3 feet off the ground and place four jack stands with 2000 lb. capacity each under the machine. Providing space under the module to work will greatly improve the ease of performing this procedure. On level ground, elevate platform just enough to fully deploy the pothole protection bars, approximately 7' 6" for the X20 and 9' 8" for the X26.
2. Open module door to expose the end of pothole protection mechanism.
3. Remove cable clamp from end of pothole retract cable.
4. With a 1" wrench turn the nut on the spring shaft (counterclockwise for control module, clockwise for power module) just enough to back the stop away from the pothole arm (the stop is either a bolt or a roll pin). Remove the stop, pull the bolt out or use a punch to remove the roll pin.
5. Unwind the spring shaft approximately 1 ½ turns until there is no tension on the spring.
6. Remove cotter pin from the spring rotator at the opposite end of the spring shaft.
7. While supporting the Pothole Protection Tube, slide the spring shaft out of the module. The spring rotator and spring will drop out as the spring shaft weldment is removed.
8. Discard all removed parts.
9. Thoroughly grease the inside of the springs with general purpose grease.



**Pothole Protection Spring Assembly, Control Module, Left Side  
View A-A with Pothole Protection Tube Deployed**

**Figure 1**

If you have any questions regarding this Service Bulletin, please contact the UpRight Product Support Department at (800) 926-5438, in the USA; (209) 896-5150, outside the USA; or by FAX at (209) 896-9244

## SERVICE BULLETIN

**Machines/Models:** X-Series  
Work Platforms

**Serial Nos.:** 1000-1380

### PROCEDURE: (cont'd.)

10. Hold the pothole bar in place and slide spring shaft through mount and pothole bar.
11. While sliding the spring shaft into place position parts on shaft, refer to Figure 1.
12. Secure both spring rotators to the spring shaft with cotter pins.
13. Pre-load springs by turning spring shaft 1 ½ turns (clockwise for power module, counterclockwise for control module).
14. Install roll pin in spring shaft to maintain pre-load.
15. Install new cable tie on pothole retract cable. Loctite® set screw and torque to 190 in./lbs. (22 Nm).
16. Lower platform, close modules (remove jack stands and lower machine to ground, if applicable) and test pothole protection for function. Raise platform to deploy pothole protection. After pothole protection arms are fully lowered, press in on each arm. Alarm should sound. If alarm does not sound consult with UpRight factory, see phone numbers below.

If you have any questions regarding this Service Bulletin, please contact the UpRight Product Support Department at (800) 926-5438, in the USA; (209) 896-5150, outside the USA; or by FAX at (209) 896-9244