

# SERVICE BULLETIN SB00.04

**Machines/Models:** SB80

**Serial Numbers:** 1337-1436

THIS BULLETIN IS **M A N D A T O R Y** .

**DATE:** March 10, 2000

**PURPOSE:** Enhance the performance of the Master Leveling Cylinder

**PROCEDURE REQUIRED:** See Section A and B

**PARTS REQUIRED:** 1 each - kit part number SB00.04

**KIT INCLUDES:** 2 each -102255-005 Counterbalance Valve

1 each -100289-010 Charge Pump Filter Element

**REIMBURSEMENT:** UpRight will reimburse the owner of record for 1.5 hours of labor at \$60.00 per hour and for travel (up to 100 miles) at \$0.50 cents per mile. Reimbursement will be made upon receipt by UpRight of your completed Warranty Claim Form. Please reference SB00.04 on your Warranty Claim Form.

**PROCEDURE:** Read all instructions thoroughly and refer to Figures 1 through 3 before starting.

## **Section A, Serial #1337-1436**

1. Open the right Turret Cover to gain access to the Engine Compartment.
2. Locate the Charge Pump Filter and verify that it is plumbed as follows:
  - a. Inlet of the filter (indicated by an indented arrow) is being supplied from supply line "D" and that the return line is plumbed to return line "E" on charge pump (see Fig 1).
  - b. If the filter head has been incorrectly installed correct the plumbing at the filter head. Torque hose fittings to 25 -30 ft. lbs (35-42 Nm).
  - c. Replace the Charge Pump Filter Element ( P.N.100289-010).

## **Section B, Serial #1337- 1416**

1. From the Chassis Controls elevate the boom to full height.
2. Remove the Guard Panel located above the fuel tank to gain access to the Master Leveling Cylinder (see figure 2).
3. Remove debris or water from the Master Leveling Cylinder Counter Balance Valve counter bore.
4. Remove and discard the upper and lower Counterbalance Valves (see figure 2).
5. Install the replacement Counterbalance Valves (P.N. 102255-005) and torque to 35 - 40 ft. lbs (47-54 Nm).
6. Reinstall the Guard Panel.

Continued on page 2

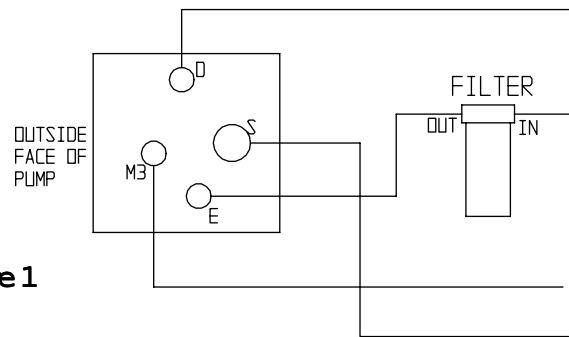
If you have any questions regarding this Service Bulletin, please contact the UpRight Product Support Department by telephone at (800) 926-5438 from within the USA or at (559) 891-5200 outside the USA or by FAX at (559) 891-8931.

# SERVICE BULLETIN SB00.04

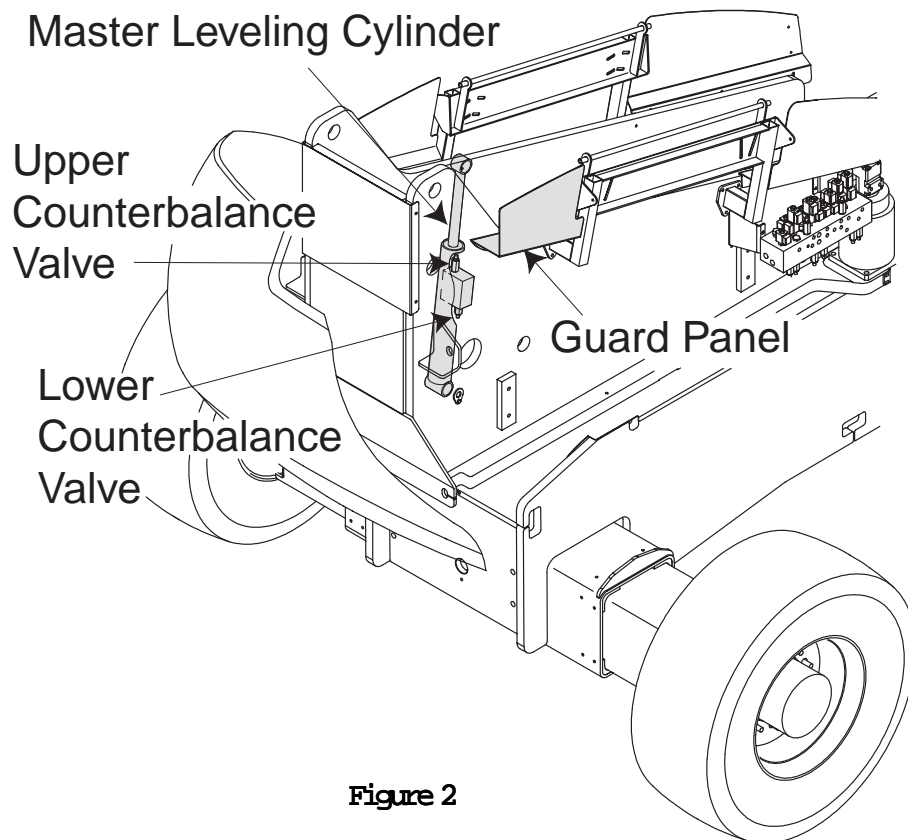
**Machines/Models:** SB80

**Serial Numbers:** 1337-1436

7. Lower boom fully and verify speed measurement. The specified lowering time is 55 to 70 seconds. If the machine does not lower in the above specified time an adjustment to the Superflex must be made using the Optimizer (See page 3).
8. Perform a complete System Function Inspection as instructed in the Operator Manual.



**Figure 1**



**Figure 2**

If you have any questions regarding this Service Bulletin, please contact the UpRight Product Support Department by telephone at (800) 926-5438 from within the USA or at (559) 891-5200 outside the USA or by FAX at (559) 891-8931.

# SERVICE BULLETIN SB00.04

**Machines/Models:** SB80**Serial Numbers:** 1337-1436**SuperFlex Optimizer**

Use the Optimizer to test the operation of the controller and joysticks. Perform the following steps from the lower control panel.

1. Disconnect the upper calibration harness.
2. Plug the Optimizer into the Super Flex (see Figure 3).
3. Operate Lift Down function. The Optimizer will display each setting.
4. If the function is out of adjustment, use the plus and minus adjustment keys on the Optimizer to reset to the proper setting.

Note: Be sure to press RUN key after making adjustments or the new setting will be lost.

**Superflex Preset:**

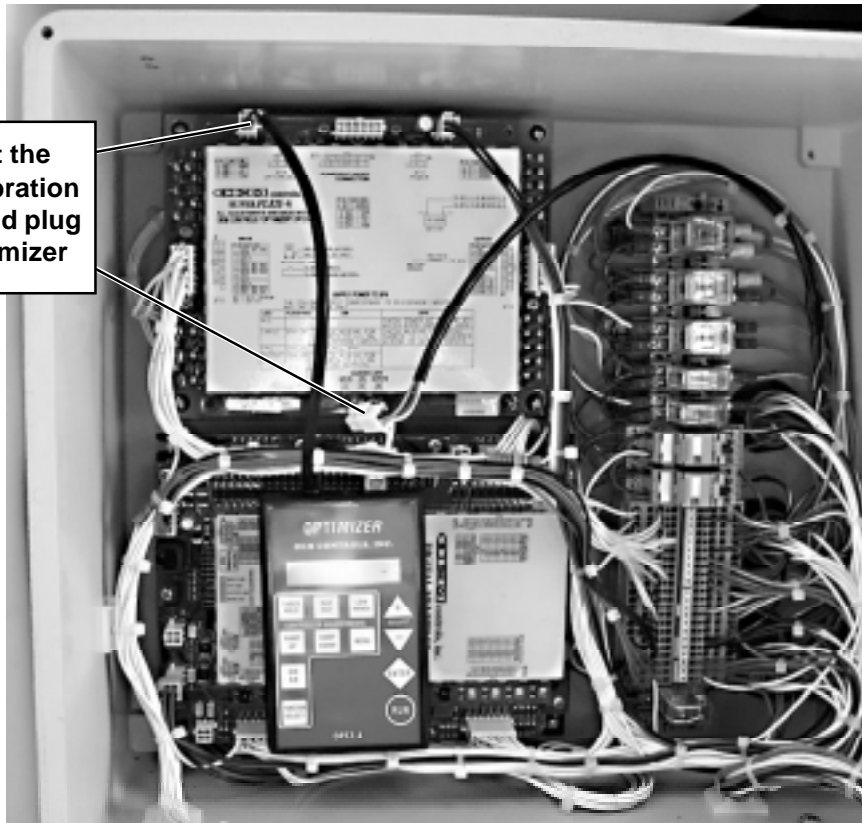
	MAX	THRESHOLD	RAMP ON	RAMP OFF
Lift Down	95%	40%	0.5	0.2

The final adjustment should be made from the above preset:

Boom Lower = 55 to 70 Seconds.

Reconnect the upper calibration harness and plug.

Disconnect the  
upper calibration  
harness and plug  
in the Optimizer



**Figure 3**

If you have any questions regarding this Service Bulletin, please contact the UpRight Product Support Department by telephone at (800) 926-5438 from within the USA or at (559) 891-5200 outside the USA or by FAX at (559) 891-8931.