

SERVICE BULLETIN

SB97.12

Axle Float Cylinder

Serial Numbers: 11002-11706

Machines/Models: SL26/30RT & SL

SL & RT only

THIS BULLETIN IS A SERVICE ADVISORY TO BE CARRIED OUT AT THE NEXT SERVICE INTERVAL.

DATE: November 25, 1997

PURPOSE: Install Axle Cylinder Kit # 30858-000

OPERATION REQUIRED: Install replacement axle cylinder, axle pivots, axle bushings, and reroute axle cylinder vent hose.

PARTS REQUIRED:

1ea. Axle Cylinder (064346-000)

2ea. Axle Pivot (064350-000)

2ea. Bushing (027931-057)

REIMBURSEMENT: UpRight will reimburse the owner of record for 2 hours of labor at \$30.00 per hour. Reimbursement will be made upon receipt by UpRight of your completed warranty claim form.

PROCEDURE: Read all instructions thoroughly and refer to figures 1-4 on page 3 before starting. Platform must be in stowed position and machine on firm level surface.

1. Exchange the front wheel motor relief hose connection (A) at the main valve block assembly with the axle cylinder vent hose (B) at the hydraulic reservoir as shown. See figure 1.
2. Remove retaining nut securing forward and reverse drive coils. Mark drive coils as they are removed so as not to confuse their location during reinstallation. Remove drive coils from valve cartridge. See figure 4.
3. Remove the existing axle cylinder (C) and discard. See figure 2.
4. Install the replacement axle cylinder (P/N 064346-000), replacement axle pivot (P/N 064350-000), and bushing (P/N 027931-057), **upper connection only!** Torque retaining nut to 150 ft/lbs. See figure 2.
5. Elevate rod end of axle cylinder such that the axle cylinder lower bleed screw is above horizontal. Use suitable device to support rod end of axle cylinder. See figure 3.
6. Open lower bleed screw on axle cylinder. See figure 3.
7. **NOTE:** Make sure drive coils have been disconnected, as instructed in procedure 2. This will prevent drive during bleeding procedure. **CAUTION:** A small amount of hydraulic oil will escape with this procedure. Always wear protective clothing and eye protection when working with hydraulic oil. Actuate drive and close lower bleed screw once **a steady stream of oil** is present.
8. Open upper screw. See figure 3.
9. Manually depress cylinder rod to obtain proper cylinder length for installation.
10. Install lower cylinder connection using replacement axle pivot (P/N 064350-000), and bushing (P/N 027931-057). Torque retaining nut to 150 ft/lbs.

(Continued on next page)

If you have any questions regarding this Service Bulletin, please contact the UpRight Product Support Department by telephone at (800) 926-5438 from within the USA or at (209) 891-5200 outside the USA or by FAX at (209) 896-9244.

SERVICE BULLETIN

SB97.12

Axle Float Cylinder
Machines/Models: SL26/30RT & SL

Serial Numbers: 11002-11706
SL & RT only

PROCEDURE: (Continued from page 1 of 3)

11. Actuate drive and close upper bleed screw once **a steady stream of oil** is present.
12. Reconnect the forward and reverse drive valve coils and torque retaining nuts to 8 in/lbs.
13. Check hydraulic oil level.
14. Perform function test as instructed in steps 14 through 24.

NOTE: Verify machine is on flat level surface. Perform the following steps to insure proper operation.

15. Elevate platform 65 inches or 1.65 meters.
16. Actuate drive forward, machine should move forward.
17. Return platform to stowed position.
18. Place a 2 inch block of wood in front of either front wheels.
19. Elevate platform 65 inches or 1.65 meters.
20. Actuate drive forward, and drive the machine over the wood block (Front wheel only). Reverse machine off of wood block.
21. Return platform to stowed position.
22. With platform in stowed position, actuate drive forward and position either the right or left front wheel on top of the wood block.
23. Elevate platform 65 inches or 1.65 meters.
24. Actuate forward drive, machine should not move.
25. Return platform to stowed position and reverse machine off of wood block.
26. If steps 14 through 24 have been performed successfully, the machine is operating properly and should return to service.
27. If machine does not perform as described, please contact the UpRight Product Support Department by telephone at (800) 926-5438.

If you have any questions regarding this Service Bulletin, please contact the UpRight Product Support Department by telephone at (800) 926-5438 from within the USA or at (209) 891-5200 outside the USA or by FAX at (209) 896-9244.

SERVICE BULLETIN

SB97.12

Axle Float Cylinder
Machines/Models: SL26/30RT & SL

Serial Numbers: 11002-11706
SL & RT only

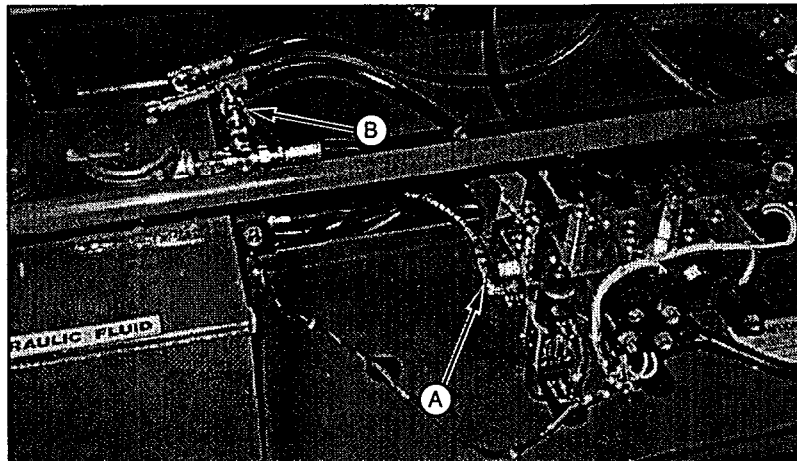


Figure 1

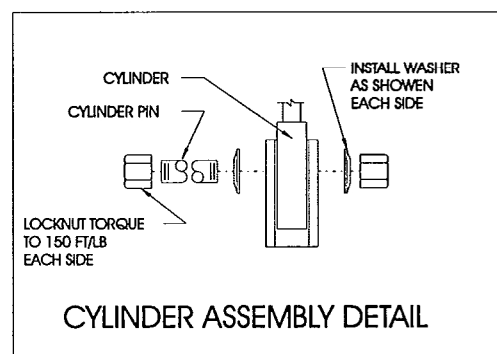
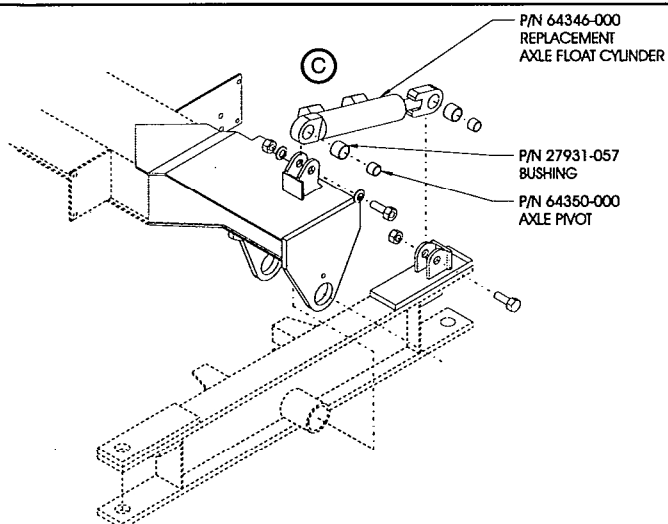


Figure 2

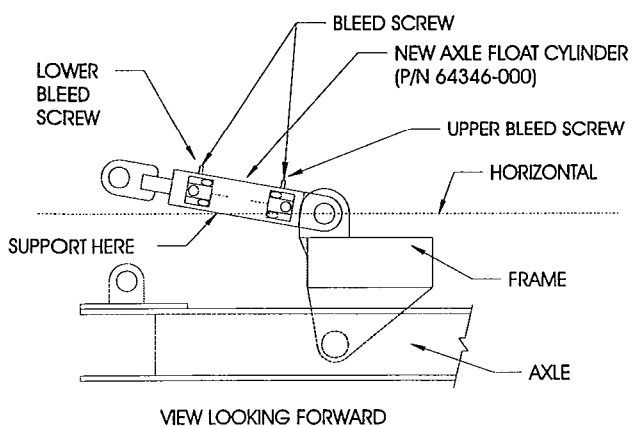


Figure 3

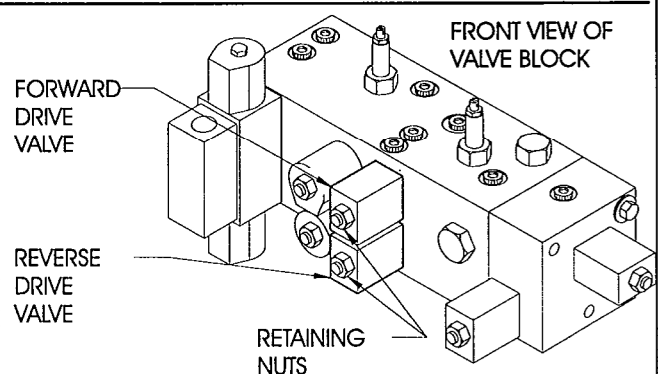
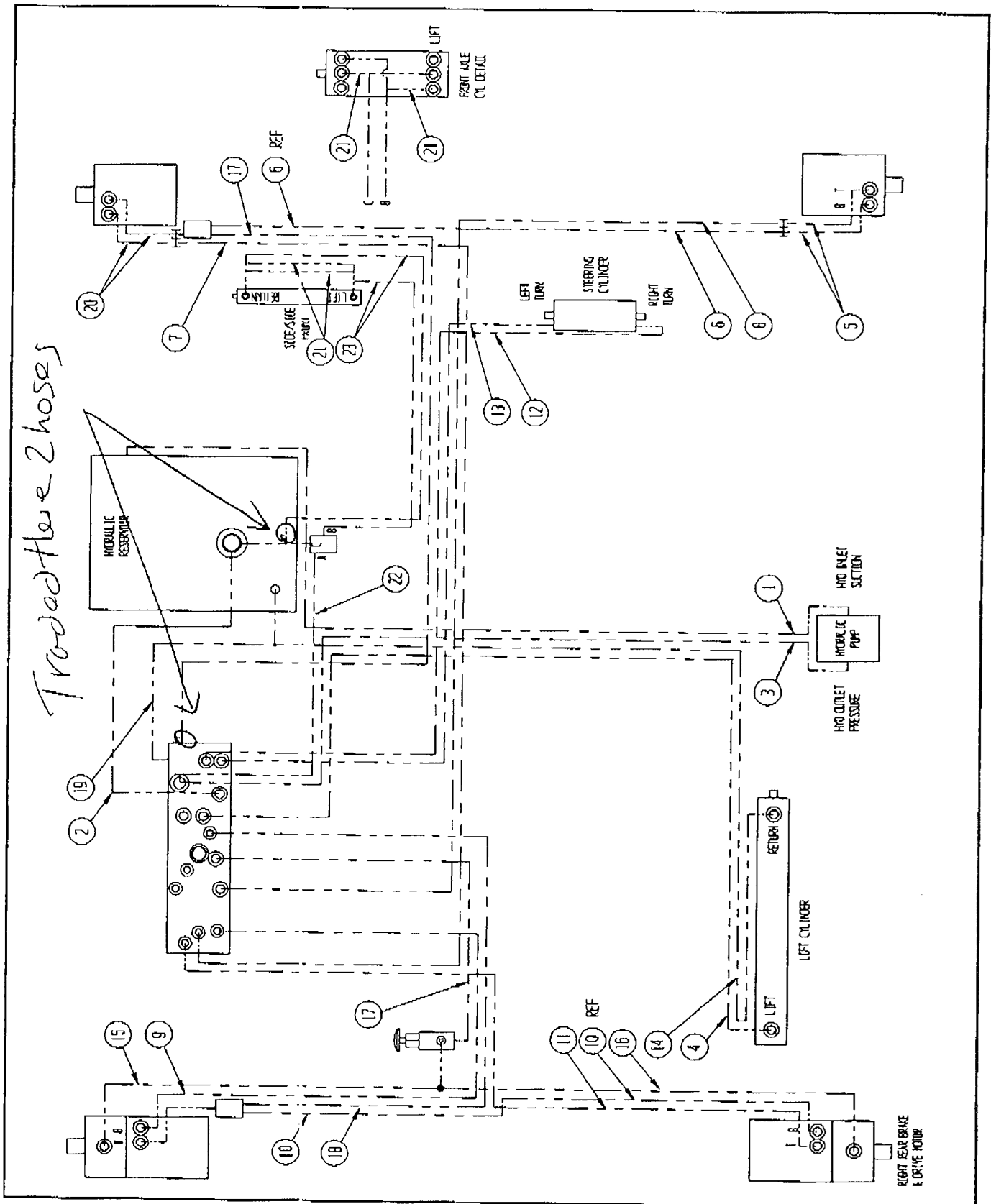


Figure 4

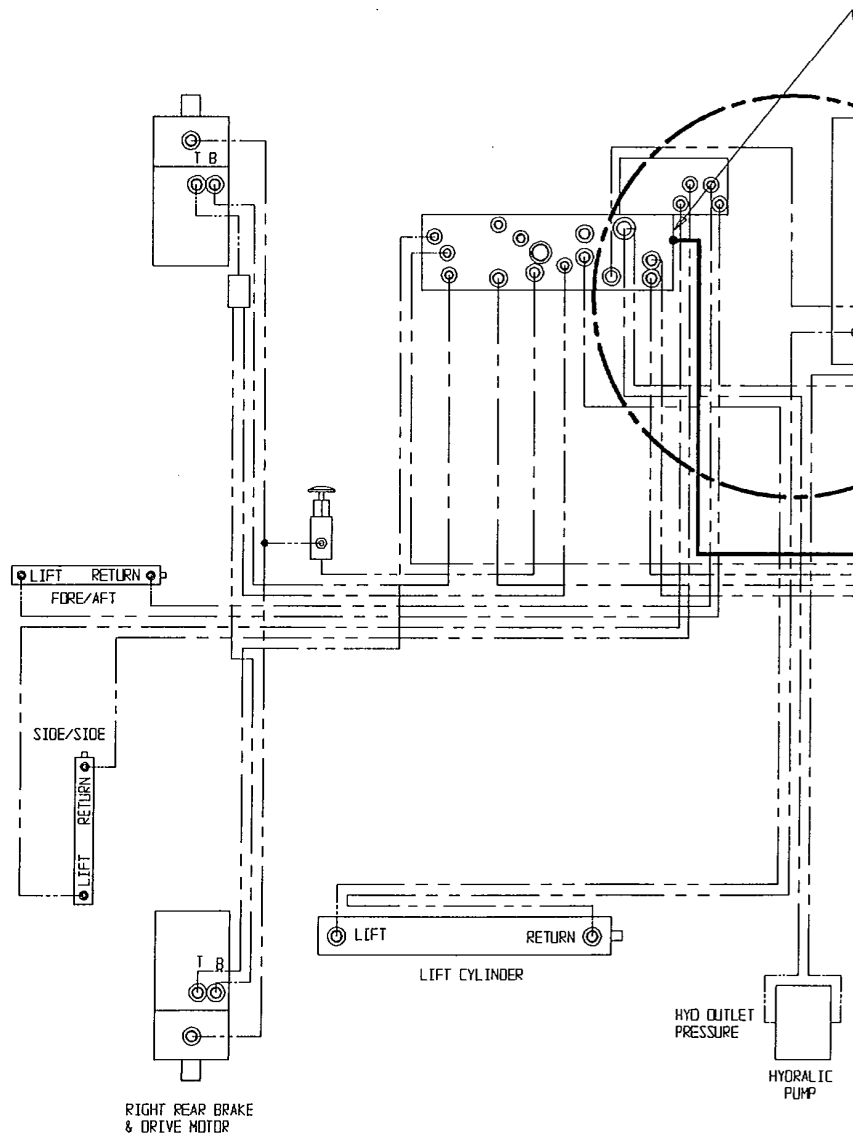
If you have any questions regarding this Service Bulletin, please contact the UpRight Product Support Department by telephone at (800) 926-5438 from within the USA or at (209) 891-5200 outside the USA or by FAX at (209) 896-9244.

Illustrated Parts Breakdown

 Section
7.2


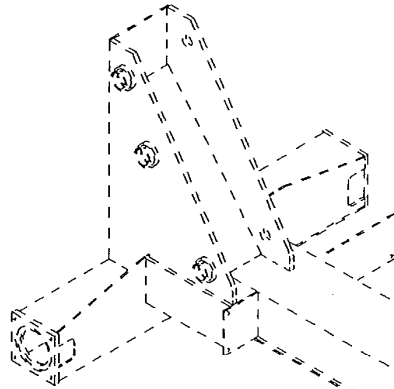
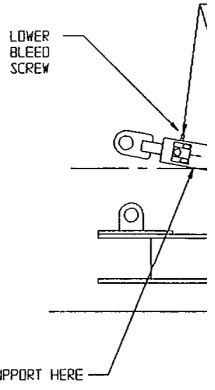
TORQUE SPECIFICATIONS				
TYPE SERIES SAE PART	CARBIDE ROCKET TYPE (FT-LBS)	CARBIDE SPOOL TYPE (FT-LBS)	FITTINGS (FT-LBS)	NBSE (IN-LBS)
#4	NA	NA	NA	135-145
#6	NA	NA	10-20	215-245
#8	25-30	8-10	25-30	430-470
#10	35-40	10-12	25-40	680-750
#12	85-90	15-18	65-90	950-1050
#16	130-140	25-30	130-140	1300-1360

* LUBRICATE THREADS WITH CLEAN LIGHT OIL PRIOR TO INSTALLATION
 ** SUBPLATE HARDWARE: 001 (004) 50 IN-LBS
 *** COIL NUTS: 30 IN-LBS



SL26/30 RT AXLE FLOAT CYLINDER
REPLACEMENT AND BLEEDING PROCEDURE.

1. EXCHANGE THE LOCATION OF THE FRONT WHEEL MOTOR RELIEF HOSE CONNECTION AT THE MAIN VALVE BLOCK ASSEMBLY AND THE AXLE FLOAT CYLINDER VENT HOSE AT THE HYDRAULIC RESERVOIR AS SHOWN. (SEE PG 2).
2. DISCONNECT THE FORWARD AND REVERSE DRIVE VALVE COILS.
3. REMOVE THE AXLE FLOAT CYLINDER.
4. INSTALL THE REPLACEMENT AXLE FLOAT CYLINDER (P/N 64346-000), REPLACEMENT AXLE PIVOT (P/N 64350-000), AND BUSHING (P/N 27931-057). UPPER CONNECTION ONLY! TORQUE RETAINING NUT TO 150 FT-LBS.
5. ROTATE THE CYLINDER AND PROP TEMPORARILY SUCH THAT THE CYLINDER LOWER BLEED SCREW IS ABOVE HORIZONTAL. (SEE A1 RIGHT).
6. OPEN BLEED SCREW.
7. ACTUATE DRIVE AND CLOSE SCREW ONCE A STEADY STREAM OF OIL IS PRESENT FROM BLEED SCREW.
WARNING: MAKE SURE DRIVE COILS HAVE BEEN DISCONNECTED TO PREVENT DRIVE DURING BLEEDING PROCEDURE.
8. INSTALL LOWER CYLINDER CONNECTION USING REPLACEMENT AXLE PIVOT (P/N 64350-000) AND BUSHING (P/N 27931-057). TORQUE RETAINING NUT TO 150 FT-LBS.
9. REPEAT BLEEDING PROCEDURE FOR THE UPPER BLEED SCREW.
10. RECONNECT DRIVE COILS.
11. PERFORM FULL FUNCTION TEST TO ASSURE PROPER OPERATION.



TORQUE SPECIFICATIONS			
TYPE SERIES SAE PART	CARTRIDGE POCKET (FT-LBS)	FITTINGS (FT-LBS)	HOSE (IN-LBS)
#4	NA	NA	135-145
#6	NA	10-20	215-245
#8	25-30	25-30	430-470
#10	35-40	35-40	680-750
#12	85-90	85-90	950-1050
#16	130-140	130-140	1300-1360

* LUBRICATE THREADS WITH CLEAN LIGHT OIL PRIOR TO INSTALLATION
 ** SHEET PILE HARDWARE: 001 (004) 50 IN-LBS
 *** COIL NUTS: 30 IN-LBS

FASTENER TORQUE TABLE			
FASTER GRADE	FOR ITEMS WHICH MUST BE REMOVED FREQUENTLY:	FOR ITEMS INFREQUENTLY REMOVED AND SUBJECT TO HIGH VIBRATION:	FOR EXTREME HIGH STRENGTH AND VIBRATION:
	GR 5	GR 5	GR 8
SIZE:			
1/4	75 IN-LBS	110 IN-LBS	
5/16	125 IN-LBS	190 IN-LBS	
	20 FT-LBS	30 FT-LBS	
	50 FT-LBS	75 FT-LBS	100 FT-LBS
5/8	100 FT-LBS	150 FT-LBS	190 FT-LBS
3/4	175 FT-LBS	250 FT-LBS	350 FT-LBS
1	400 FT-LBS	600 FT-LBS	900 FT-LBS

* VALUES FOR BOLT & NUT WITH WASHERS UNDER BOLT HEAD & NUT.

