

SERVICE BULLETIN SB98.20

Machines/Models: TM12

Serial Numbers: 1493-3405

THIS BULLETIN IS A SERVICE ADVISORY TO BE CARRIED OUT AT THE NEXT SERVICE INTERVAL.

DATE: October 12, 1998

PURPOSE: Notification of requirement to install four (4) grease fittings in the mast to permit periodic lubrication and instructions for installation.

OPERATION REQUIRED: Install four (4) grease fittings per drawing and grease the mast bearings after their installation and every 90 days thereafter.

PARTS REQUIRED: Grease Fitting Installation Kit # 030761-000 includes the following parts:

1. 4 ea. #013336-011 Grease Fittings
2. 1 ea. #030761-002 1/4-28 UNF Tap
3. 1 ea. #030761-001 #3 Drill Bit

REIMBURSEMENT: UpRight will reimburse the owner of record for 1/2 hour of labor at \$35.00 per hour. Reimbursement will be made upon receipt by UpRight of your completed warranty claim form. Please reference SB98.20 on your warranty claim form.

PROCEDURE: Read all instructions thoroughly and refer to figure 1 before starting.

CAUTION: Use appropriate eye protection while performing the drilling operation.

1. Mark and drill, per figure 1, two (2) holes on each side of the mast.

NOTE: Drill through outer mast only.

2. Tap holes.
3. Install grease fittings.
4. Grease with one stroke of hand grease gun.
5. Lower platform and test operation.
6. Repeat greasing during each 90-day scheduled maintenance cycle.
7. Place this Service Bulletin with your service manual and incorporate the procedure in your regular maintenance schedule.

Continued on Page 2.

If you have any questions regarding this Service Bulletin, please contact the UpRight Product Support Department by telephone at (800) 926-5438 from within the USA or at (209) 891-5200 outside the USA or by FAX at (209) 896-9244.

SERVICE BULLETIN SB98.20

Machines/Models: TM12

Serial Numbers: 1493-3405

Installation Instructions for Limit Switch

OPERATION REQUIRED: Limit mast travel at full extension.

PARTS REQUIRED: Kit # xxxxxx-xxx includes the following parts:

1. 8 ea. #065519-000 Switch Pad
2. 1 ea. #065373-001 Switch Sensor
3. 1 ea. #065373-002 Switch Actuator
4. 2 ea. #026551-005 Pop Rivet
5. 4 ea. #011715-004 Screw Mach RD HD 6-32UNC x 1/2
6. 4 ea. #011248-047 Locknut
7. 2 ea. #063951-002 Relay
8. 5 ea. #029447-099 16/3 Cable - 76"
9. 10 ea. #029620-002 Butt Connector
10. 9 ea. #029615-002 Push Connector
11. 1 ea. #029451-099 16 Gauge Wire, White
12. 1 ea. #065357-000 Switch Plate
13. 2 ea. #011828-006 Screw Flat HD SOC 1/4-20 x 3/4
14. 2 ea. #013919-002 Hose Clamp
15. xxxxxxxxxx

PROCEDURE: Read all instructions thoroughly and refer to figure 2 before starting.

PRE-ASSEMBLY:

1. Using the supplied parts (1 each #065373-001 Switch Sensor, 7 each #065519-000 Switch Pads, 1 each #065357-000 Switch Plate, 1 each #013919-002 Hose Clamp, 4 each #00000-000 Screws, and 1 each #011249-003 Nut, assemble the Switch Plate assembly as shown in figure 1.

WARNING: Always block machine when in the extended position.

ASSEMBLY:

1. Raise machine to full extension in order to gain access to the existing opening at the top of #4 Mast (see figure 2 detail A).
2. Using the Pop Rivets (#026551-005) supplied with Kit, install the Switch Pad (#065519-000) to the #4 Mast (see figure 2, detail A).
3. Gain access to the interior of the #4 Mast by removing the upper access plate.
4. Using a fish tape, fish the supplied 16/3 Cable (#029447-099) down through the #4 Mast.
5. Secure the 16/3 Cable to the top side of #4 Mast
6. Route the Cable out of the #4 Mast towards the Upper Control Box.

Continued on Page 3.

If you have any questions regarding this Service Bulletin, please contact the UpRight Product Support Department by telephone at (800) 926-5438 from within the USA or at (209) 891-5200 outside the USA or by FAX at (209) 896-9244.

SERVICE BULLETIN SB98.20

Machines/Models: TM12

Serial Numbers: 1493-3405

7. Return lift to stowed position and disconnect the negative lead to the battery.

CAUTION: Pay particular attention to the positioning of the Cable Clamps. Position exactly as shown in figure 1, detail C, avoid looping and allowance of excess wire in steps 6 and 7.

8. Using the pre-assembled Switch Plate, connect the height limit switch wiring as follows (refer to figure 3 for wiring diagrams).

- a) Crimp the red and white wire from the 16/3 Cable in a "Y" fashion to one of the black leads from the Height Limit Switch.
- b) Crimp the black wire from the 16/3 Cable to the other black lead from the height limit switch.

9. Remove all slack from cable, clamp cable to switch plate assembly.

CAUTION: Pay particular attention to the positioning of the Cable Clamps. Position exactly as shown in figure 1, detail C.

10. Mount switch plate assembly using the Kit supplied allen head screws (#011828-006).

PLATFORM CONTROL BOX ASSEMBLY:

1. Remove the top plate, so as to gain access to the inside of the upper control box.
2. Mount Relay (#029863-009) into the center of the upper control box using the supplied hardware (2 each #011715-004 Screws, and 2 each #011248-047 Locknuts).
3. Route the 16/3 Cable into the upper control box, following the same routing as the main control harness.
4. Locate the factory stowed Black/Red wire in the main harness and the Black wire from the 16/3 newly installed cable strip, and crimp the two wires together with a spade connection. Connect the spade terminal to terminal #7 of the newly installed lift relay.
5. Locate the White wire in the main harness, cut and splice in a "Y" fashion, the Kit supplied White wire.
6. Crimp and spade terminal to the other end of the White wire installed in Step 5 and connect to terminal #8 of the newly installed lift relay.
7. Locate the Black wire in the main harness, cut and strip both ends, install a Kit supplied spade terminal to each end of the Black wires.
8. Connect one of the Black wire spade terminals to terminal #1 of the newly installed lift relay.
9. Connect the other Black wire spade terminal to terminal #5 of the newly installed lift relay.
10. Locate the Black/White wire in the main harness, cut the wire and strip both new ends.
11. Using the supplied butt splices connect one of the Black/White wire to the red wire supplied in the new 16/3 Cable and connect the other Black wire to the new White wire supplied in the new 16/3 Cable.

If you have any questions regarding this Service Bulletin, please contact the Upright Product Support Department by telephone at (800) 926-5438 from within the USA or at (209) 891-5200 outside the USA or by FAX at (209) 896-9244.

SERVICE BULLETIN SB98.20

Machines/Models: TM12

Serial Numbers: 1493-3405

Chassis Control Box Assembly:

1. Open the right side swing out and remove the top access cover.
2. Mount Relay (#029863-009) into the existing holes in the lower Control Box using the supplied hardware (#011715-004 Screws, 2 each)(#011248-047 Locknuts 2 each).
3. Locate the factory stowed Black/Red wire in the main harness strip and crimp on a spade connector and connect the wire to terminal #8.
4. Locate the Black wire going from the lift switch to terminal TB-7, cut the wire close to the new relay and crimp a spade connector to each of the new ends.
5. Connect one end of the black wire spade connectors to terminal #1 of the newly installed relay.
6. Connect the remaining connector to terminal #5 of the newly installed relay.
7. Connect the Kit supplied White/Red wire to terminal #7 of the newly installed relay.
8. Connect the remaining end of the White/Red wire to terminal "B" of key switch.

Close up and functional check:

1. Reinstall the upper control panel top access panel.
2. Reinstall the #4 Mast upper access panel.
3. Reinstall the lower control access panel and close the right side swing out door.
4. Reinstall the negative battery lead.
5. Perform a functional check of the machine.

If you have any questions regarding this Service Bulletin, please contact the UpRight Product Support Department by telephone at (800) 926-5438 from within the USA or at (209) 891-5200 outside the USA or by FAX at (209) 896-9244.

SERVICE BULLETIN SB98.20

Machines/Models: TM12

Serial Numbers: 1493-3405

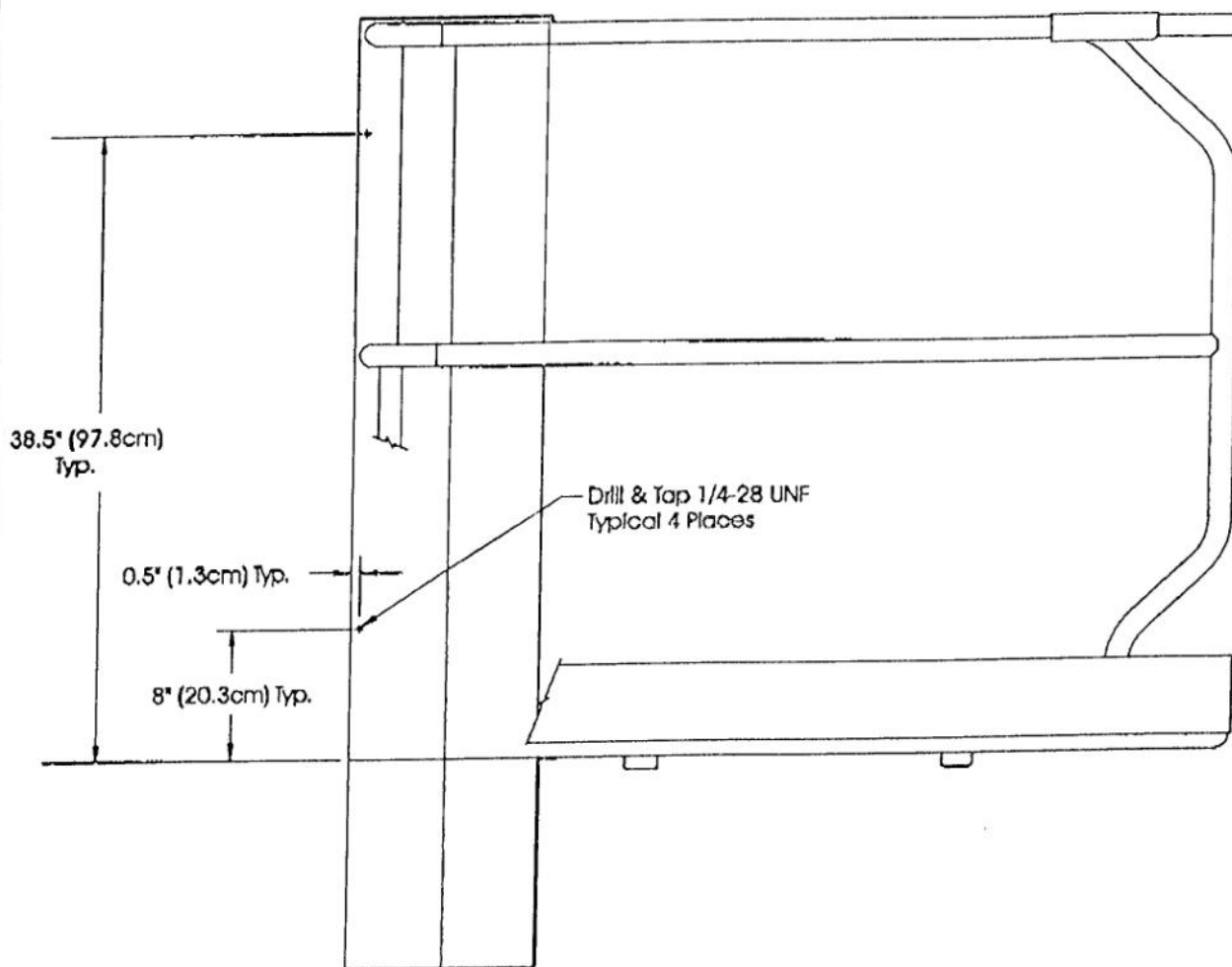


Figure 1

If you have any questions regarding this Service Bulletin, please contact the UpRight Product Support Department by telephone at (800) 926-5438 from within the USA or at (209) 891-5200 outside the USA or by FAX at (209) 896-9244.

SERVICE BULLETIN SB98.20

Machines/Models: TM12

Serial Numbers: 1493-3405

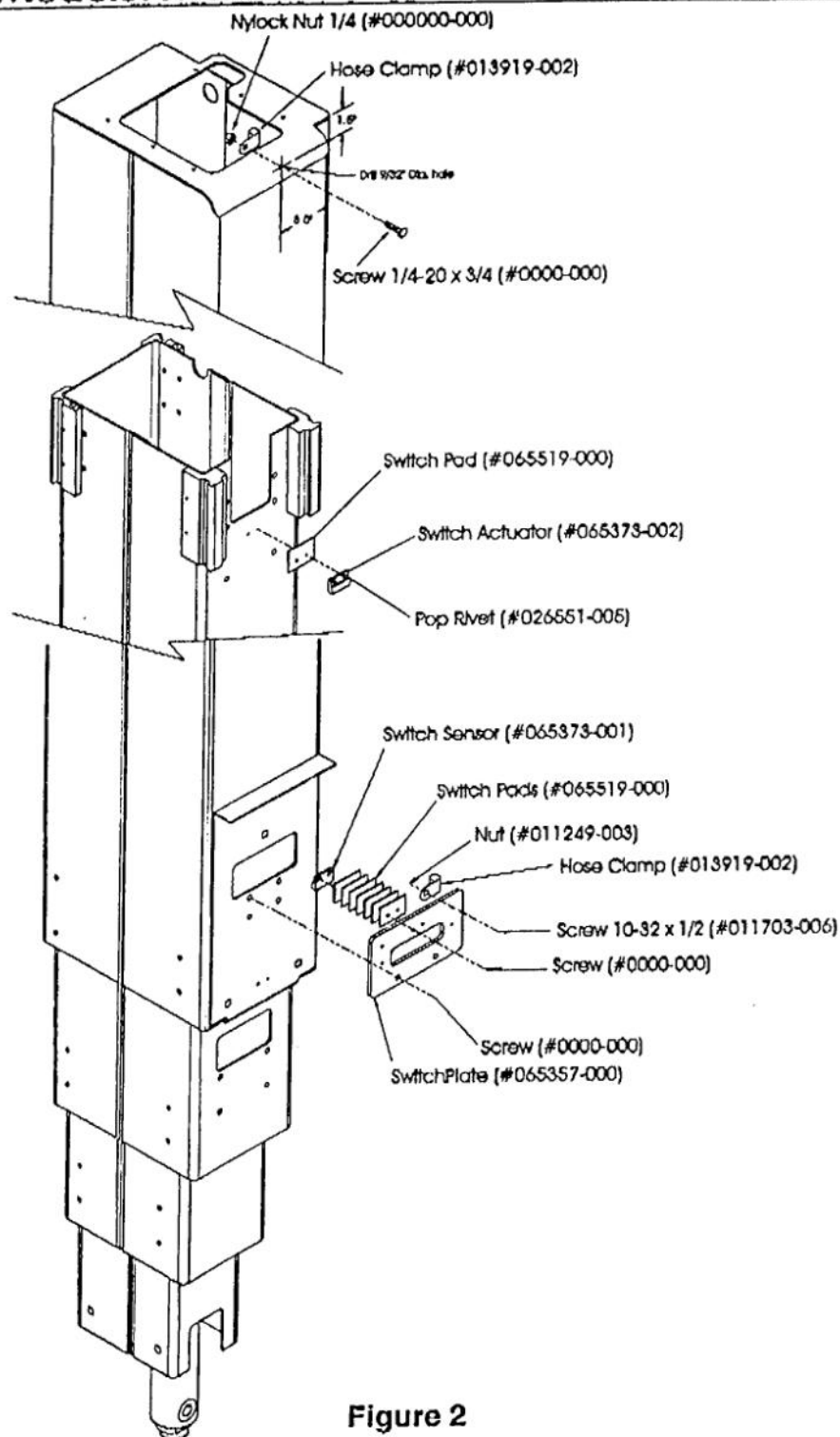


Figure 2

If you have any questions regarding this Service Bulletin, please contact the UpRight Product Support Department by telephone at (800) 926-5438 from within the USA or at (209) 891-5200 outside the USA or by FAX at (209) 896-9244.

SERVICE BULLETIN SB98.20

Machines/Models: TM12

Serial Numbers: 1493-3405

Figure 3
Upper Control Box

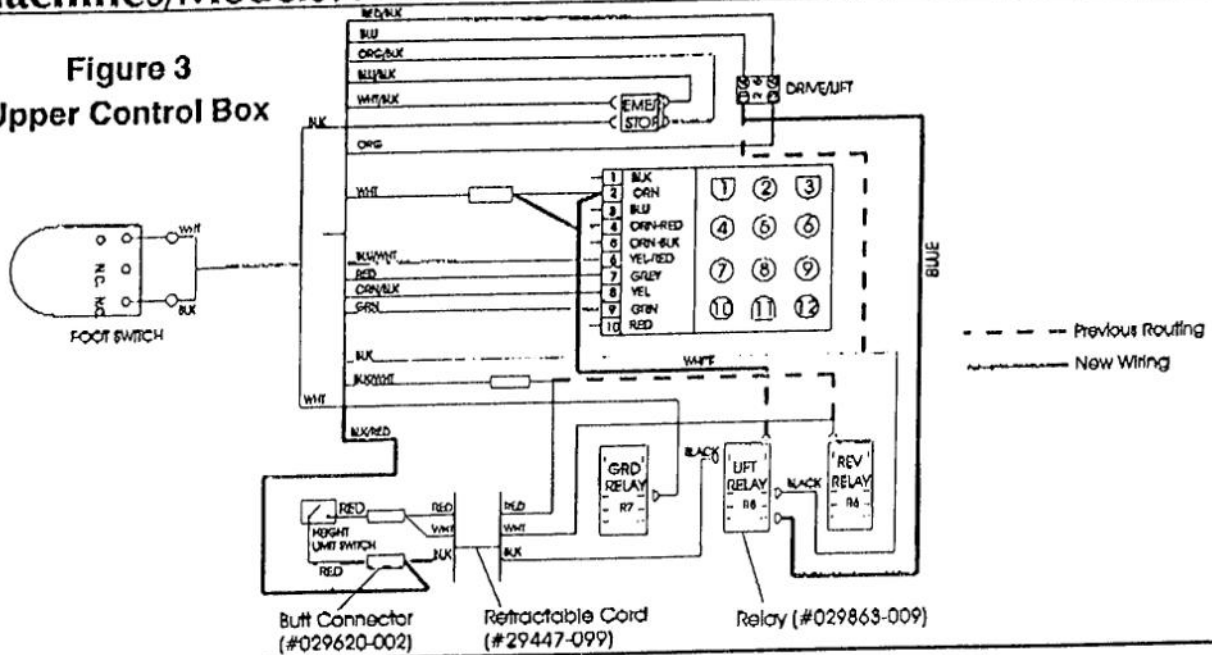


Figure 4
Lower Control Box

