

SERVICE BULLETIN SB99.9A

Machines/Models: LX31, 41, 50 Domestic with Outriggers

Serial Numbers:
1000-2965

THIS BULLETIN IS A SERVICE ADVISORY TO BE CARRIED OUT AT THE NEXT MONTHLY SERVICE INTERVAL.

DATE: October 15, 1999

PURPOSE: To enhance function of limit switch during outrigger operation.

OPERATION REQUIRED: Replace existing white proximity switches with roller type.

PARTS REQUIRED: Down Switch Kit # 030937-000 includes the following parts:

1. 1 ea. #067473-000 LX Platform Down Bracket
2. 2 ea. #011248-003 Hex Nut 10-24 UNC
3. 1 ea. #066490-000 Roller Switch Single
4. 2 ea. #011709-008 Screw Mach 10-24 UNC X 1
5. 4 ea. #011240-003 #10 Flat Washer STD STL 3/16
6. 6 ea. #029610-006 Fork Connector
7. 2 ft. #029477-099 Orange/Black Wire 16 AWG
8. 6 in. #029451-099 White Wire 16 AWG
9. 5 ea. #029620-002 Butt Connector
10. 1 ea. #029825-002 Diode 5 AMP

Items 6 through 10 are not used on machine Serial Numbers 2747 through 2965.

REIMBURSEMENT: UpRight will reimburse the owner of record for 1 hour of labor at \$35.00 per hour. Reimbursement will be made upon receipt by UpRight of your completed warranty claim form. Please reference SB99.9A on your warranty claim form.

PROCEDURES for all machines with Serial Numbers 1000 through 2746 only:
Read all instructions thoroughly and refer to Figures 1 - 6 before starting.

1. Remove battery negative cable from battery.
2. Locate the platform down white proximity switches at right front corner of machine under linkage.
3. Remove the existing white proximity switches, rivets and shim plates. See Figure 2.
4. Cut off 3 Conductor Cable from switches. Tie back black wire. It will no longer be used. See Figure 3.
5. Attach Roller Switch Single (#066490-000) and Platform Down Bracket (#067473-000) as shown in Figure 2.
6. The new switch has two black wires coming off the back of switch. Butt connect red wire from 3 Conductor Cable to one of the black wires. Butt connect white wire from 3 Conductor Cable to remaining black wire of switch. See Figure 3.
7. Locate R15 (Lower Control Box Assembly) and disconnect black wire from Terminal #14. Leave white wire connected. Insulate black wire and tie it back out of the way. See Figure 5.
8. Assemble the Diode Assembly shown in Figure 4 using supplied parts. Insulate Diode leads with sleaving. The total length of Diode Assembly should be 7 inches.

Continued on Page 2

If you have any questions regarding this Service Bulletin, please contact the UpRight Product Support Department by telephone at (800) 926-5438 from within the USA or at (559) 891-5200 outside the USA or by FAX at (559) 896-9244.

SERVICE BULLETIN SB99.9A

Serial Numbers:

Machines/Models: LX31, 41, 50 Domestic with Outriggers

1000-2965

9. Locate R28 (Lower Control Box Assembly) and connect orange/black end of Diode Assembly to Terminal #9. Leave all existing wires on R28. See Figure 5.
10. Connect white end of Diode Assembly to Terminal #14 of R15. See Figure 5.
11. Secure all modifications with supplied cable ties.

Locate model type below for following procedures:

2 Wheel Drive Machines (For Serial Numbers 1000 through 2746) follow steps 1 through 11 and steps A, B and C below.

- A. In the Lower Control Box Assembly, move the orange/black wire from R16 Terminal #14 to R16 Terminal #9. Leave the red/black wires on Terminal #14. See Figure 1.
- B. Add an orange/black jumper from R1 Terminal #9 to R16 Terminal #5. Leave the red wire on Terminal #9 of R1. See Figure 1.
- C. Adjust Roller Switch Single (#066490-000) so machine goes into "creep speed" before platform height reaches 9 ft. Tested creep speed should be 18-22 sec. for machine to travel 20 ft.

4 Wheel Drive Machines (with floating axle) follow steps 1 through 11 and steps D, E, F, G and H below.

- D. Move the blue/black wire from Terminal Strip #23 to Terminal #9 of R16, located in the Lower Control Box. See Figure 1.
- E. Disconnect the white wire from R16 Terminal #5. Cut to fit and connect to Terminal #14 of R16. See Figure 1.
- F. Move the orange/black wire from R16 Terminal #14 to R16 Terminal #9. Leave the red/black wires on Terminal #14. See Figure 1.
- G. Add an orange/black jumper from R1 Terminal #9 to R16 Terminal #5. Leave the red wire on Terminal #9 of R1. See Figure 1.
- H. Adjust Roller Switch Single (#066490-000) so machine goes into "creep speed" before platform height reaches 9 ft. Tested creep speed should be 18-22 sec. for machine to travel 20 ft.

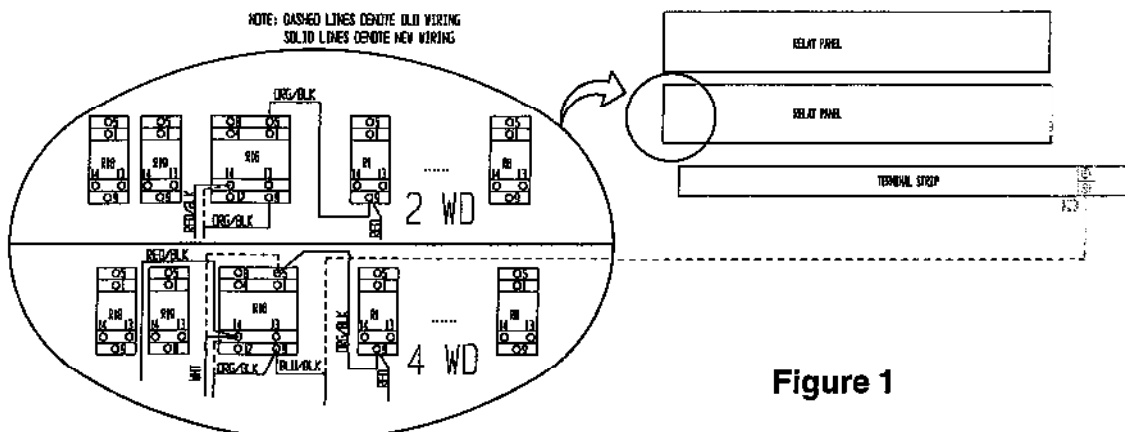


Figure 1

If you have any questions regarding this Service Bulletin, please contact the UpRight Product Support Department by telephone at (800) 926-5438 from within the USA or at (559) 891-5200 outside the USA or by FAX at (559) 896-9244.

SERVICE BULLETIN SB99.9A

Serial Numbers:
1000-2965

Machines/Models: LX31,41,50 Domestic with Outriggers

PROCEDURES for Serial Numbers 2747 through 2965 only: Read all instructions thoroughly and refer to Figures 1 & 5 before starting.

1. Locate the platform down white proximity switches at right front corner of machine under linkage.
2. Remove the existing white proximity switches, rivets and shim plates. See Figure 2.
3. Cut off 3 Conductor Cable from switches. Butt connect the 3-Conductor Cable white and black wires together. Attach this assembly to the one of the switch black wires. Attach the other switch black wire to the 3-Conductor cable red wire. See Figure 6.
4. Attach Roller Switch Single (#066490-000) and Platform Down Bracket (#067473-000) as shown in Figure 2.
5. Adjust Roller Switch Single (#066490-000) so machine goes into "creep speed" before platform height reaches 9 ft. Tested creep speed should be 18-22 sec. for machine to travel 20 ft.

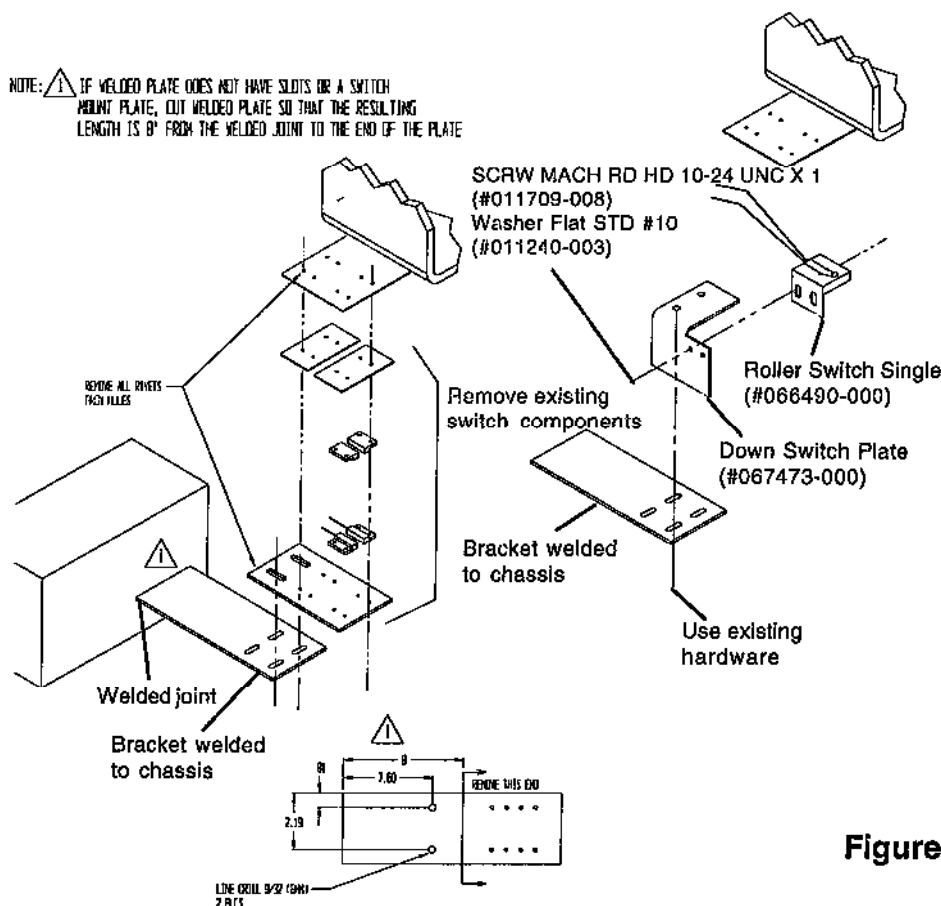


Figure 2

If you have any questions regarding this Service Bulletin, please contact the UpRight Product Support Department by telephone at (800) 926-5438 from within the USA or at (559) 891-5200 outside the USA or by FAX at (559) 896-9244.

SERVICE BULLETIN SB99.9A

Machines/Models: LX31,41,50 Domestic with Outriggers

Serial Numbers:
1000-2965

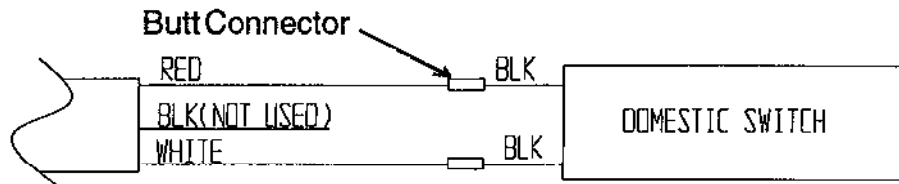


Figure 3

For Serial Numbers
1000 through 2746 only.

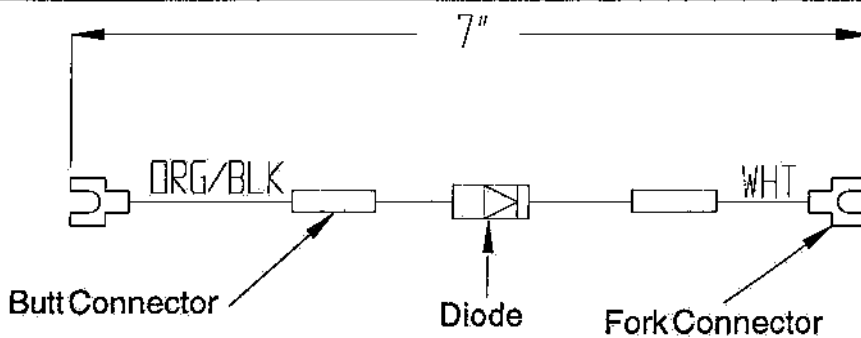


Figure 4

For Serial Numbers
1000 through 2746 only.

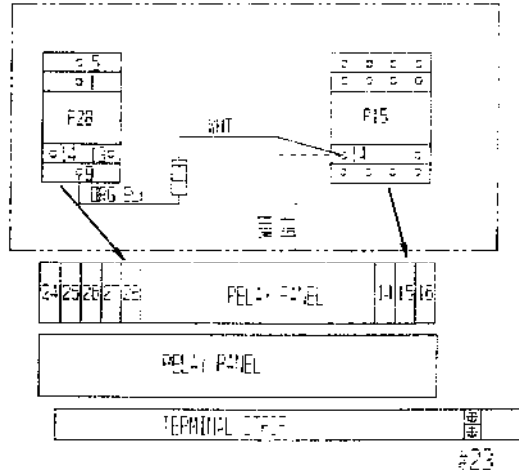


Figure 5

For Serial Numbers
1000 through 2746 only.

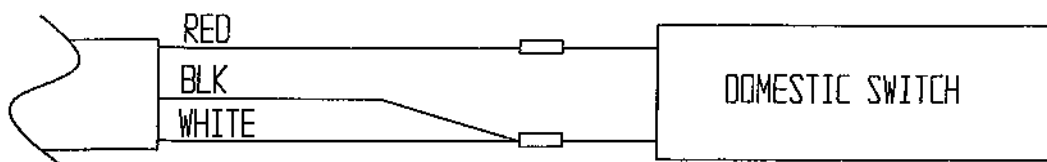


Figure 6

For Serial Numbers
2747 to current.

If you have any questions regarding this Service Bulletin, please contact the UpRight Product Support Department by telephone at (800) 926-5438 from within the USA or at (559) 891-5200 outside the USA or by FAX at (559) 896-9244.