



SERVICE INFORMATION SI02.03

Machines/Models:LX Series **Serial Numbers:** Euro Diesel/12 v

DATE: JULY 27, 2002

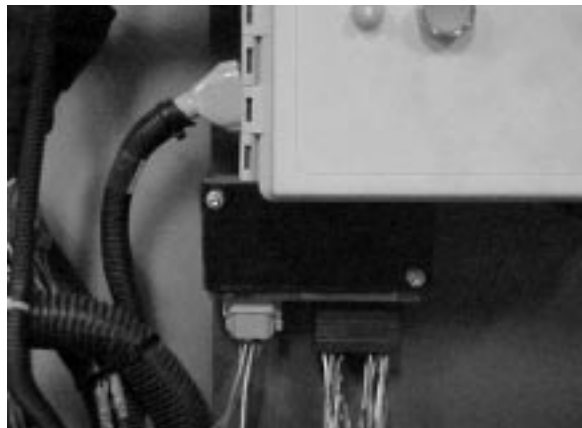
PURPOSE: Installation of Outriggers on LX 31 and 41

For Outrigger installation on LX 50 Dual Decks contact UpRight Product Support

READ ALL INSTRUCTIONS AND REVIEW ALL FIGURES BEFORE PERFORMING THE FOLLOWING INSTALLATION.

PROCEDURE 1: Refer to Installation Drawing 031033-000

1. Turn off all e-stops and key switches and disconnect the battery.
1. Install Outrigger Cylinders to existing brackets. (Page 3)
2. Install Outrigger Valve block in compartment with main valve. (Page 4)
3. Install Outrigger hoses. (Page 8)
4. Install the Outrigger Module under the lower control box. Drill holes using the module as a template and mount using the supplied hardware. (Page 4)



5. Install the Outrigger Wire Harness. (Page 5 - Item 301)
6. Install Outrigger Module wiring. (Page 6)
7. Mark and drill holes for toggle switches in the upper control box, using the decal as a template.(Do not drill through the decal). Install toggle switches. Install decal. (Page 4)
8. Install the Outrigger control cable. (Page 5 - Item 225)
9. Install new lift/drive selector switch and relay in upper control box and wire upper control box. (Page 4 and 7)
10. Install level mount. (Page 4)

If you have any questions regarding this Service Bulletin, please contact the UpRight Product Support Department by telephone at (800) 926-5438 from within the USA or at (559) 662-3900 From Europe countries + 353 (0) 1 620 9300 (Ireland)



SERVICE INFORMATION SI02.03

Machines/Models:LX Series **Serial Numbers:** Euro Diesel/12 v

11. Verify all components on Installation Drawing 031033-000, pages 3-8, are installed **before** operating the machine.
12. Reconnect the battery.

PROCEDURE 2: OPERATIONAL TEST

With all four outriggers fully retracted the machine should drive and lift. With all four outriggers deployed in firm contact with the supporting surface the machine should lift but not drive. With any outrigger partially extended the machine should not lift or drive.

The following must be verified before returning the machine to service:

- 1) With all four outriggers retracted the machine should drive and lift.
- 2) With all four outriggers deployed in firm contact with the supporting surface the machine should lift but not drive.
- 3) The machine should not lift or drive with any outrigger partially extended. Partially extend one outrigger at a time, keeping all other outriggers fully retracted, and verify neither drive or lift operates.
- 4) Drive should be disabled above 8 meters.
- 5) Outriggers should not extend or retract when the platform is elevated above the platform down limit switch.
- 6) Maximum height should be limited through the height limit switch.
- 7) Function test all machine operations from both the upper and lower controls including e-stops and tilt sensor operation.

If you have any questions regarding this Service Bulletin, please contact the UpRight Product Support Department by telephone at (800) 926-5438 from within the USA or at (559) 662-3900 From Europe countries + 353 (0) 1 620 9300 (Ireland)



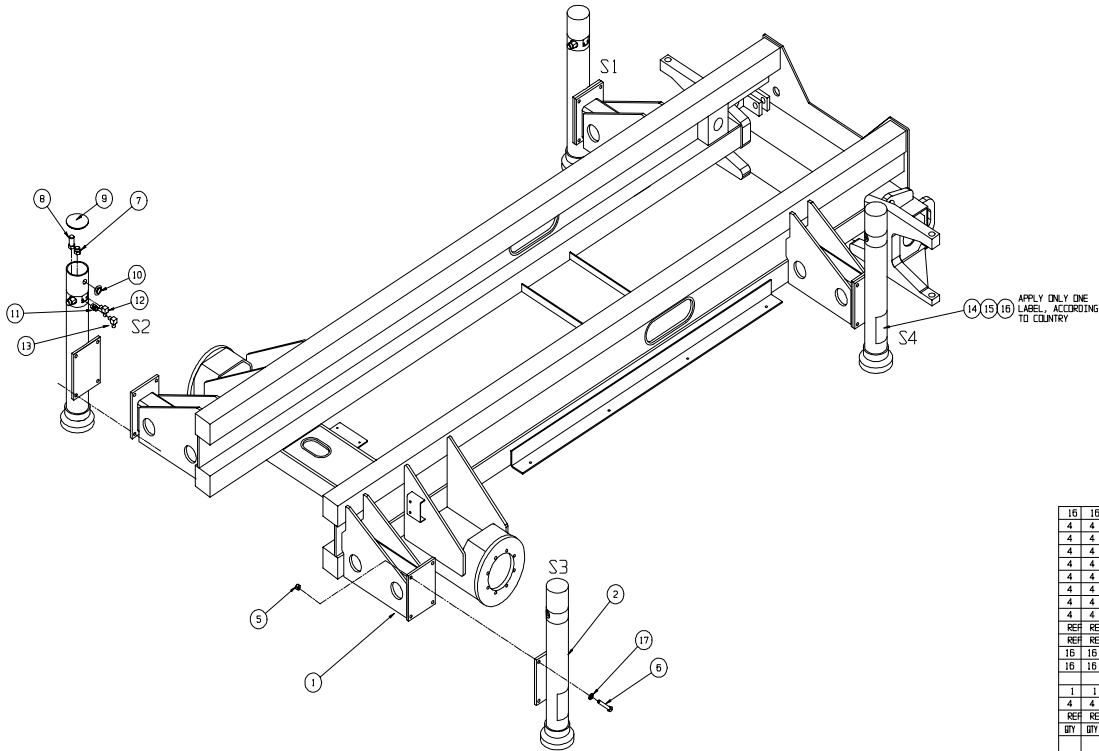
SERVICE INFORMATION S102.03

Machines/Models: LX Series Serial Numbers: Euro Diesel/12 v

REVISIONS			
REV	DESCRIPTION	DATE	CHG. BY
0	NEW RELEASE	7/26/02	WD

NOTE:

- UNLESS OTHERWISE NOTED TORQUE FASTENERS TO UPRIGHT SPEC. #105 AND TORQUE FITTINGS TO UPRIGHT SPEC. #106.



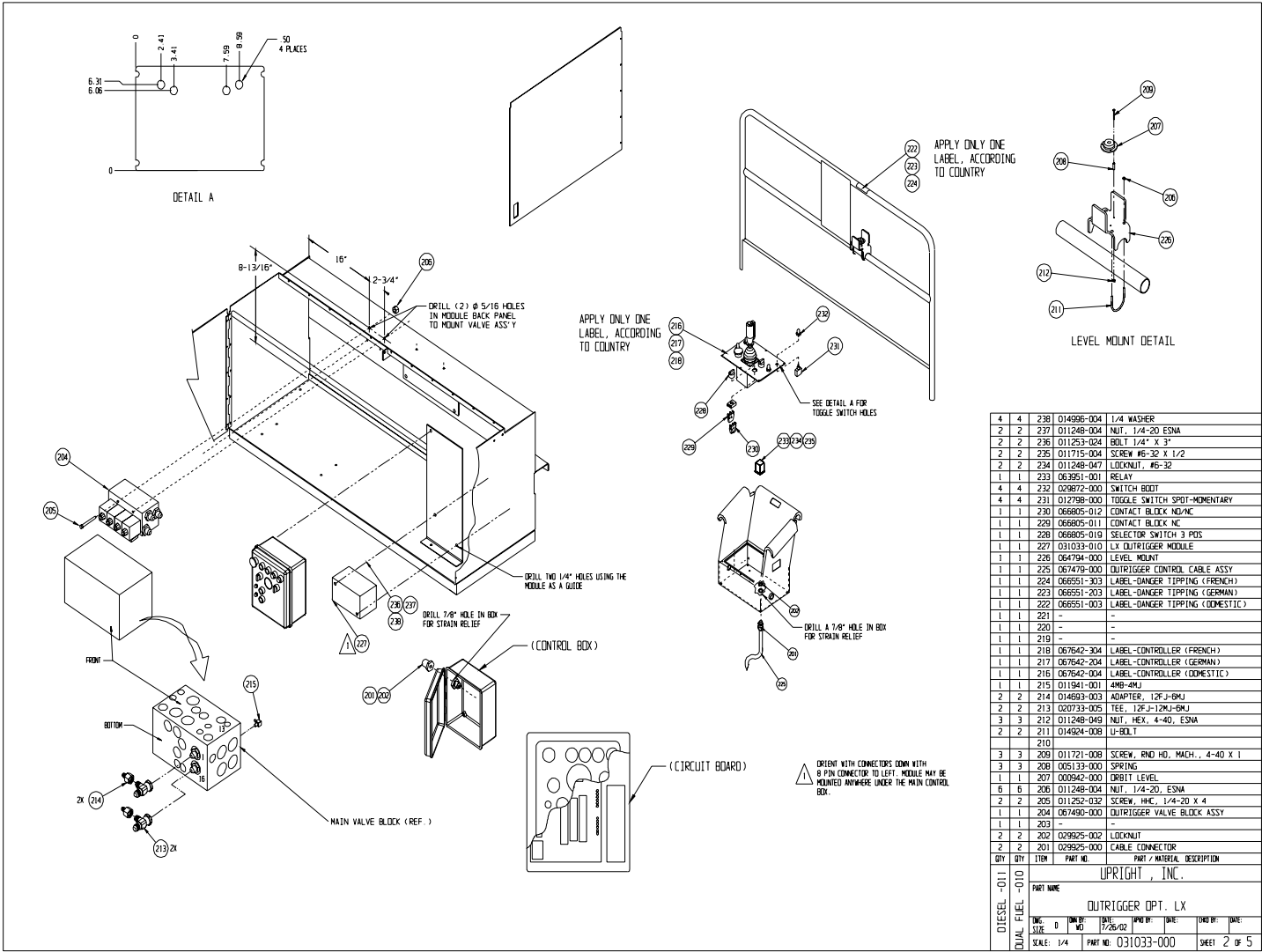
16	16	17	11240-008	WASHER 1/2 FLA STD
4	4	16	066556-301	LABEL CAUTION (FRENCH)
4	4	15	066556-201	LABEL CAUTION (GERMAN)
4	4	14	066556-001	LABEL CAUTION (DOMESTIC)
4	4	13	011937-003	FITTING 6FK-6MU 90
4	4	12	011934-004	FITTING 6MB-6MU 90
4	4	11	011941-005	FITTING 6MB-6MU
4	4	10	065218-000	GROMMET, CAPLUG #GR0-1/2-LH
4	4	9	065116-004	PLUG
REF	REF	8	063021-006	SWITCH PRESS.
REF	REF	7	062881-000	SWITCH BALL
16	16	6	011256-016	SCREW HHC 1/2-13UNC X 2
16	16	5	011248-008	NUT HEX ESN4 1/2-13 UNC
1	1	3	067953-010	HESE INSTALLATION, LX OUTRIGGER
4	4	2	067840-000	OUTRIGGER CYL.
REF	REF	1	067844-000	OUTRIGGER SUPPORT WELDMENT
QTY	QTY	ITEM	PART NO.	PART / MATERIAL DESCRIPTION
UPRIGHT, INC.				
PART NAME				
OUTRIGGER OPT. LX				
ENG	DATE	CHK	PRO BY	DATE
WD	7/26/02			
SCALE:	1/8"	PART NO:	031033-000	SHEET 1 OF 5

If you have any questions regarding this Service Bulletin, please contact the UpRight Product Support Department by telephone at (800) 926-5438 from within the USA or at (559) 662-3900 From Europe countries + 353 (0) 1 620 9300 (Ireland)



SERVICE INFORMATION S102.03

Machines/Models: LX Series Serial Numbers: Euro Diesel/12 v



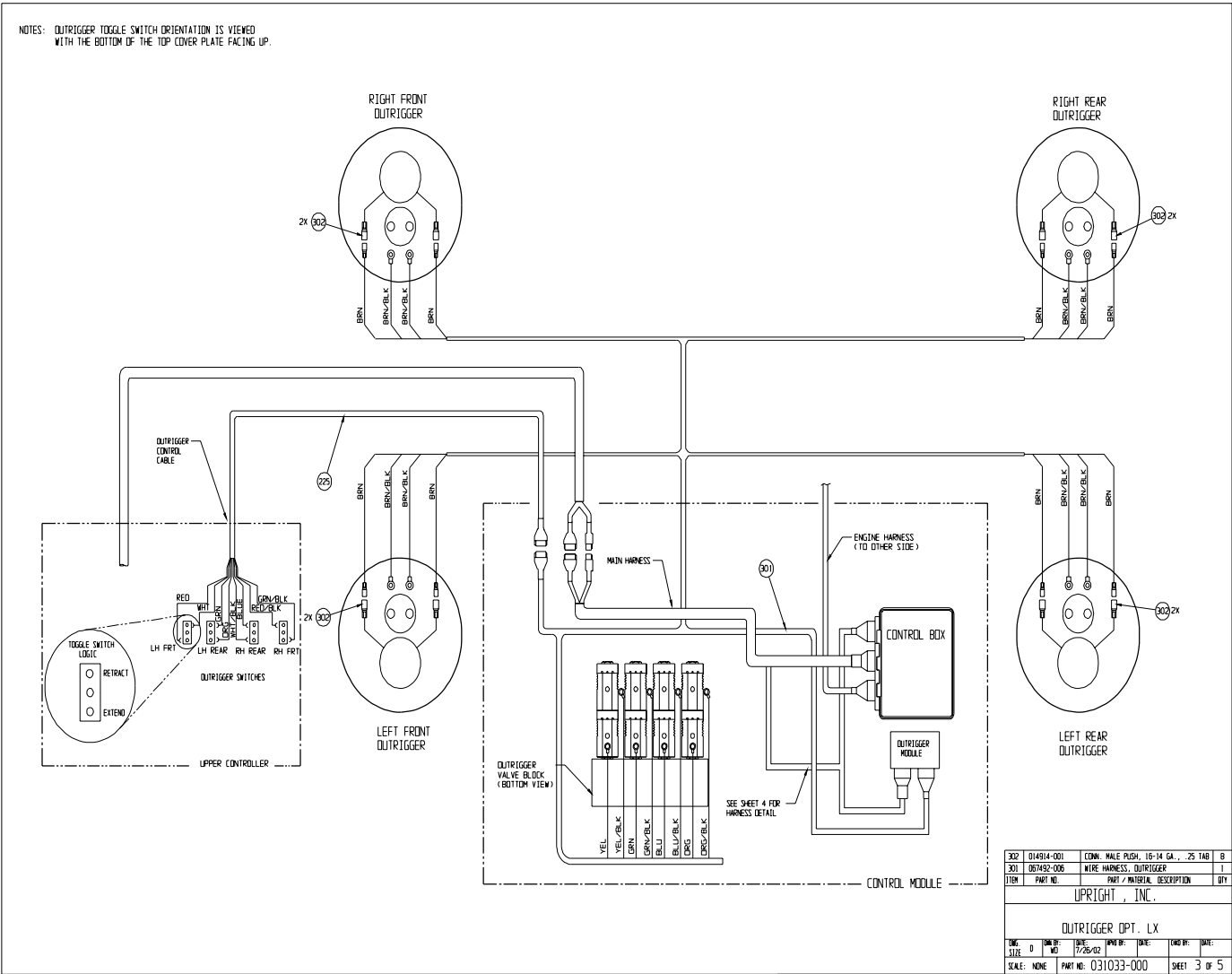
4	4	238	014998-004	1/4 WASHER
2	2	237	011248-004	NUT, 1/4-20 ESNA
2	2	236	011253-024	BOLT 1/4" X 3"
2	2	235	011715-004	SCREW #6-32 X 1/2
2	2	234	011248-047	LOCKNUT, #6-32
1	1	233	063951-001	RELAY
4	4	232	029872-000	SWITCH BOOT
4	4	231	012798-000	TOGGLE SWITCH SPOT-MOMENTARY
1	1	230	066805-012	CONTACT BLOCK NO/NC
1	1	229	066805-011	CONTACT BLOCK NC
1	1	228	066805-010	SELECTOR SWITCH 3 POS
1	1	227	031033-010	LX OUTRIGGER MODULE
1	1	226	064794-000	LEVEL MOUNT
1	1	225	064793-000	OUTRIGGER CONTROL CABLE ASSY
1	1	224	066951-203	LABEL-DANGER TIPPING (FRENCH)
1	1	223	066951-203	LABEL-DANGER TIPPING (GERMAN)
1	1	222	066951-003	LABEL-DANGER TIPPING (DOMESTIC)
1	1	221	-	-
1	1	220	-	-
1	1	219	-	-
1	1	218	067642-304	LABEL-CONTROLLER (FRENCH)
1	1	217	067642-204	LABEL-CONTROLLER (GERMAN)
1	1	216	067642-004	LABEL-CONTROLLER (DOMESTIC)
1	1	215	011941-001	4M8-4MJ
2	2	214	014693-003	ADAPTER, 12F J-6MJ
2	2	213	020733-005	TEE, 12F J-12MJ-6MJ
3	3	212	011248-049	NUT, HEX., 4-40, ESNA
2	2	211	014924-008	U-BELT
		210	-	-
3	3	209	011721-008	SCREW, RND HD, MACH., 4-40 X 1
3	3	208	005133-000	SPRING
1	1	207	009942-000	CRIBBIT LEVEL
6	6	206	011248-004	NUT, 1/4-20, ESNA
2	2	205	011252-032	SCREW, HX, 1/4-20 X 4
1	1	204	064790-000	OUTRIGGER VALVE BLOCK ASSY
1	1	203	-	-
2	2	202	029925-002	LOCKNUT
2	2	201	029925-000	CABLE CONNECTOR
REV	REV	ITEM	PART NO.	PART / MATERIAL DESCRIPTION
001	001			UPRIGHT, INC.
PART NAME				
DIESEL FUEL - 010				
OUTRIGGER OPT. LX				
ENG	DATE	BY	DATE	CHK BY
0	NO	12/29/02		
SCALE: 1/4	PART NO: 031033-000	SHEET 2 OF 5		

If you have any questions regarding this Service Bulletin, please contact the UpRight Product Support Department by telephone at (800) 926-5438 from within the USA or at (559) 662-3900 From Europe countries + 353 (0) 1 620 9300 (Ireland)



SERVICE INFORMATION S102.03

Machines/Models: LX Series Serial Numbers: Euro Diesel/12 v

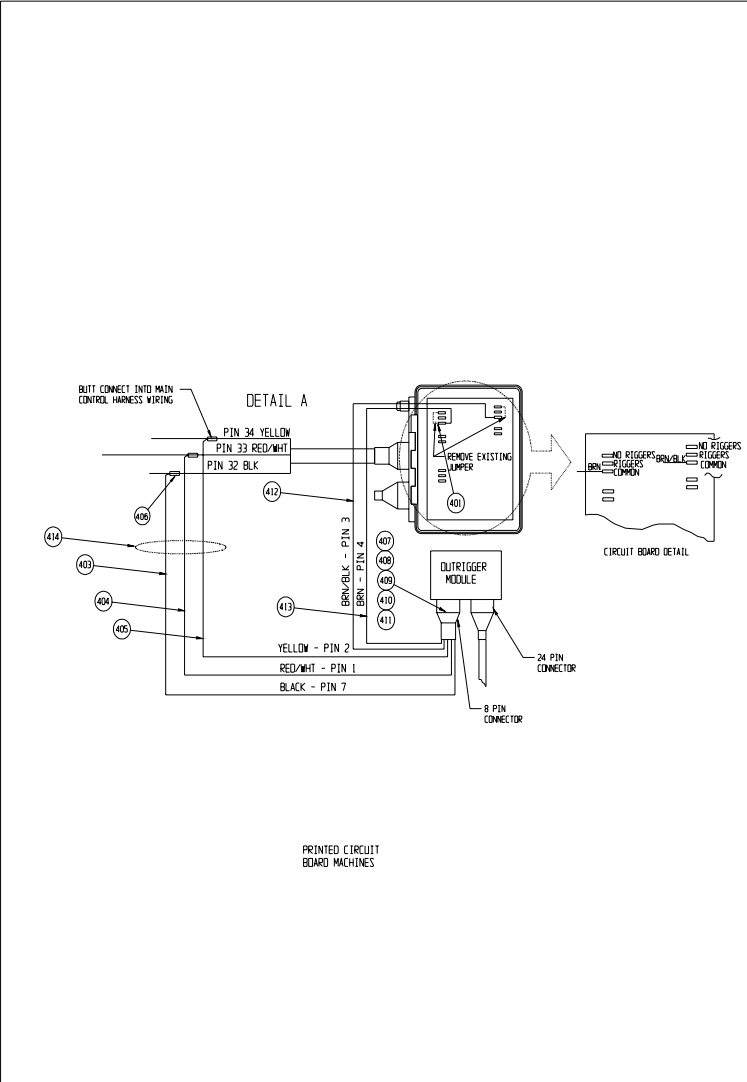
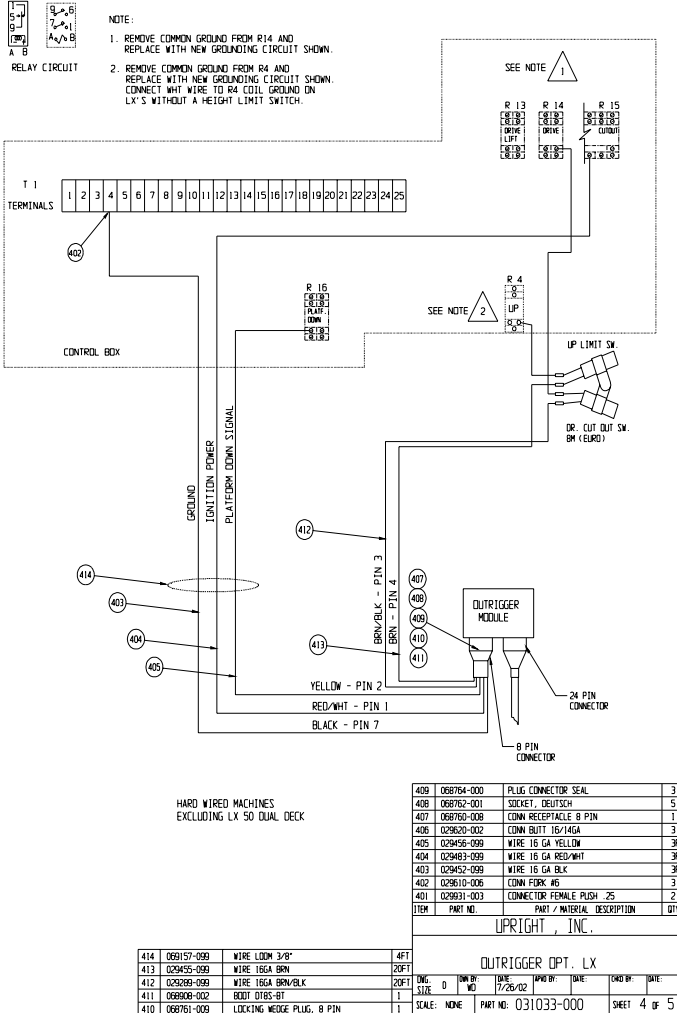


If you have any questions regarding this Service Bulletin, please contact the UpRight Product Support Department by telephone at (800) 926-5438 from within the USA or at (559) 662-3900 From Europe countries + 353 (0) 1 620 9300 (Ireland)



SERVICE INFORMATION S102.03

Machines/Models: LX Series Serial Numbers: Euro Diesel/12 v

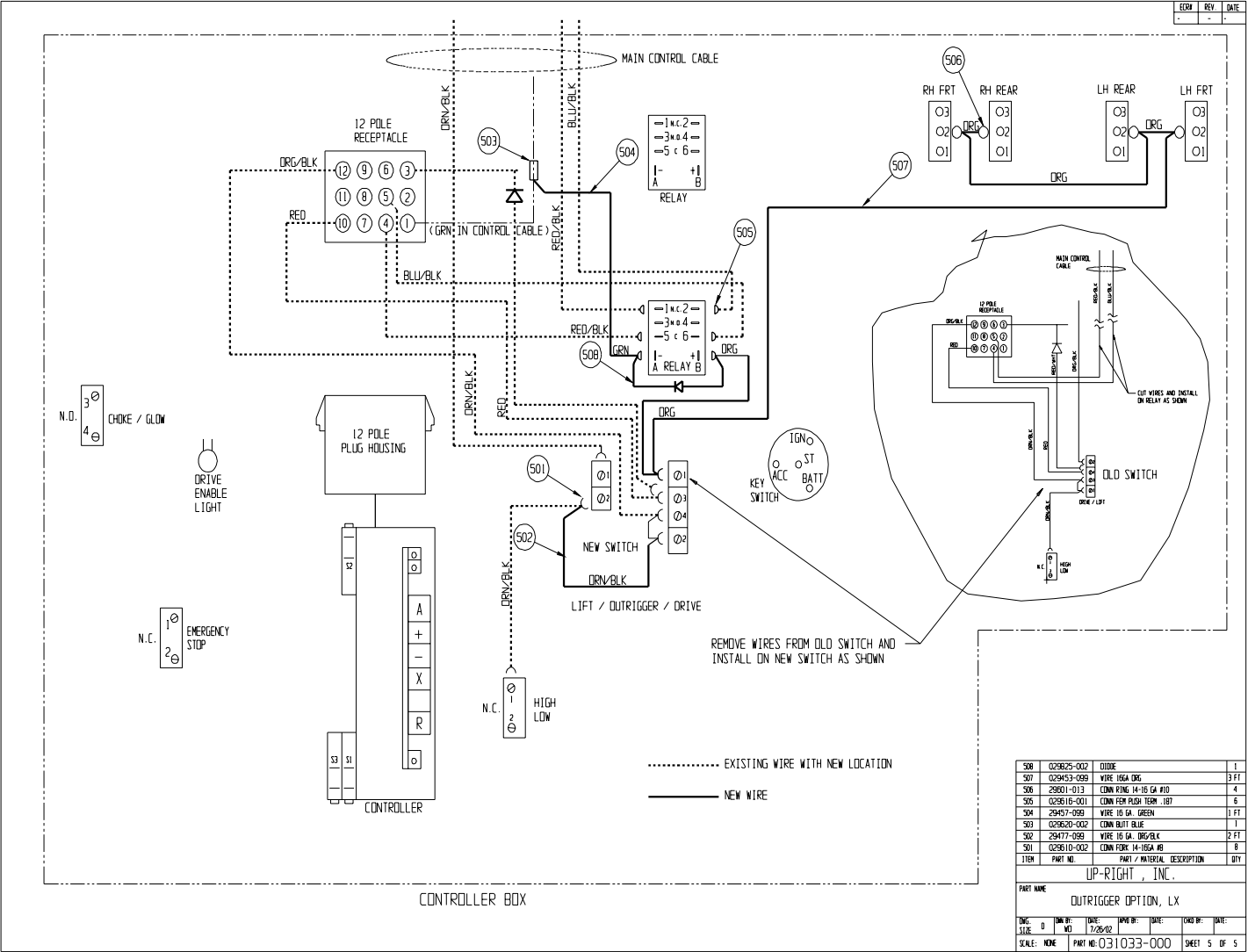


If you have any questions regarding this Service Bulletin, please contact the UpRight Product Support Department by telephone at (800) 926-5438 from within the USA or at (559) 662-3900 From Europe countries + 353 (0) 1 620 9300 (Ireland)



SERVICE INFORMATION S102.03

Machines/Models: LX Series Serial Numbers: Euro Diesel/12 v



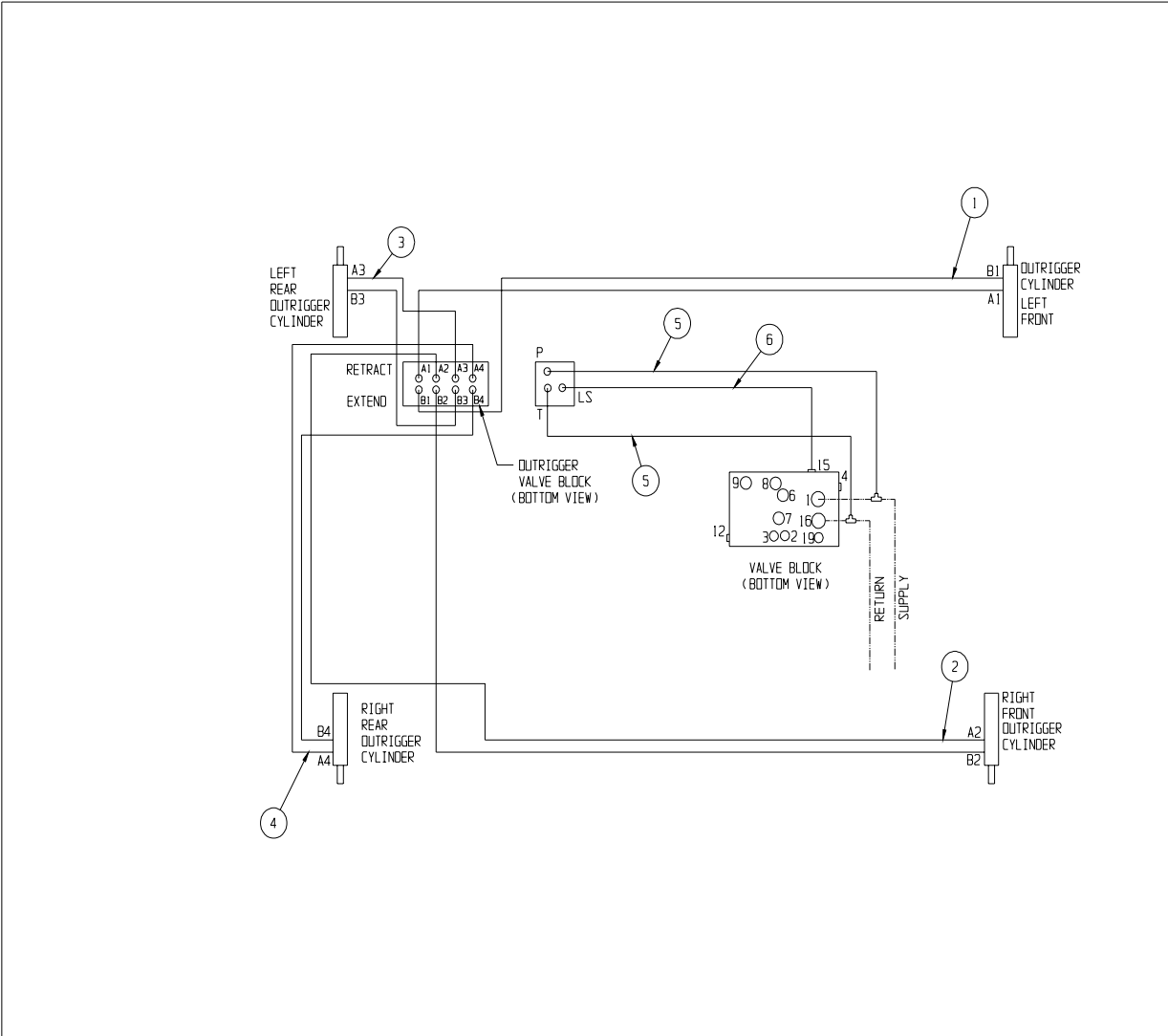
If you have any questions regarding this Service Bulletin, please contact the UpRight Product Support Department by telephone at (800) 926-5438 from within the USA or at (559) 662-3900 From Europe countries + 353 (0) 1 620 9300 (Ireland)



SERVICE INFORMATION S102.03

Machines/Models: LX Series Serial Numbers: Euro Diesel/12 v

REV	DESCRIPTION	DATE	CHG. BY
1	ADD "EXTEND" & "RETRACT". REV ANG ORIENTATION	6/15/99	T.W



ITEM	PART NO.	PART / MATERIAL DESCRIPTION	QTY
6	065234-005	1/4 HOSE ASSY X 26 4F-JK-4F-JK	1
5	062192-032	1/4 HOSE ASSY X 24 6F-JK-6F-JK	2
4	062192-036	1/4 HOSE ASSY X 176 6F-JK-6F-JK	2
3	062192-025	1/4 HOSE ASSY X 137 6F-JK-6F-JK	2
2	062192-034	1/4 HOSE ASSY X 118 6F-JK-6F-JK	2
1	062192-033	1/4 HOSE ASSY X 80 6F-JK-6F-JK	2

UPRIGHT, INC.					
PART NAME					
HOSE INSTALLATION LX OUTRIGGER					
DWG. NO.	REV.	DATE	APP'D BY	DATE	ORD BY
SCALE: 1/10					
PART NO: 067953-010		SHEET		OF 1	

If you have any questions regarding this Service Bulletin, please contact the UpRight Product Support Department by telephone at (800) 926-5438 from within the USA or at (559) 662-3900 From Europe countries + 353 (0) 1 620 9300 (Ireland)