

Parts Manual

MX15 / MX19 Work Platform

European Specifications

Serial Numbers 20000 - Current

Publication Number: 060546-026

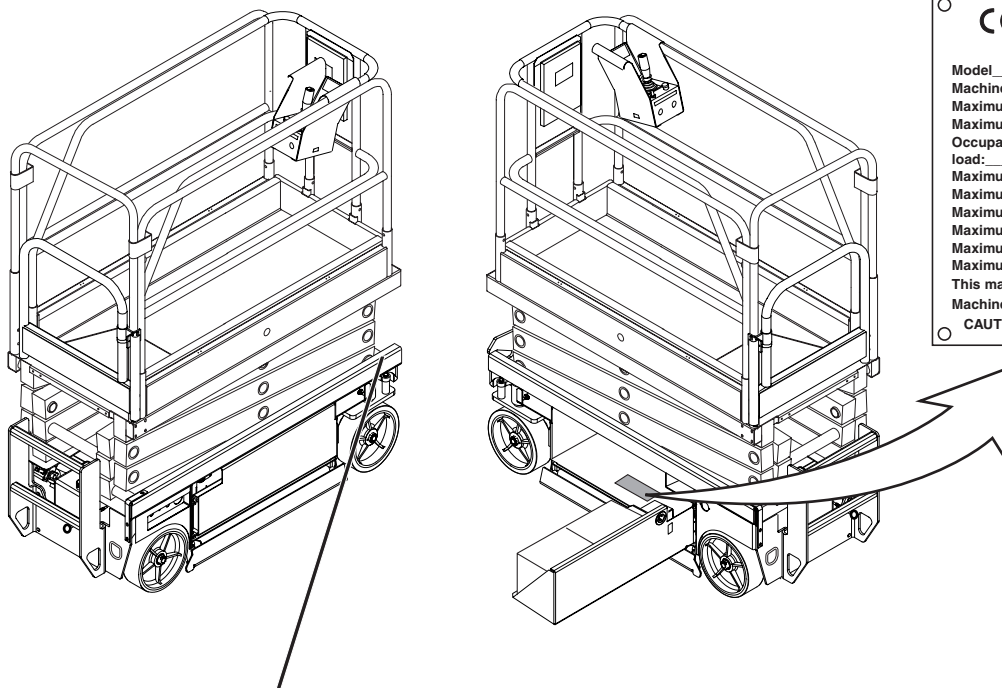
UpRight

MX15 / MX19

Work Platform

Serial # 20000 - current

When contacting UpRight for service or parts information, be sure to include the MODEL and SERIAL NUMBERS from the equipment nameplate. Should the nameplate be missing, the SERIAL NUMBER is also stamped on top of the chassis above the front axle pivot.



**Stamped Serial
Number**

CE		UpRight Inc.	
1775 PARK ST. SELMA CALIFORNIA 93662 USA			
Model _____	Serial number: _____		
Machine weight _____ kg	Mfg. date: _____		
Maximum wheel load: _____			
Maximum allowable incline of machine when elevated: _____ deg.			
Occupants and equipment must not exceed the rated maximum load: _____ kg Maximum platform occupants: _____			
Maximum allowable side force on platform: _____ N			
Maximum platform height: _____ m			
Maximum platform reach: _____ m			
Maximum allowable wind speed: _____ m/s=Beaufort scale _____			
Maximum hydraulic system pressure: _____ bar			
Maximum system voltage: _____ Vdc			
This machine is manufactured to comply with Machinery directive 89-392/CEE			
CAUTION: CONSULT OPERATOR'S MANUAL BEFORE USE.			
<small>061205-003</small>			

UpRight, Inc.

801 South Pine Street
Madera, California 93637

TEL: 559-662-3900

FAX: 559-673-6184

PARTS: 1-888-UR-PARTS

PARTS FAX: 1-800-669-9884

UpRight

Call Toll Free in U.S.A.

1-800-926-LIFT

UpRight

Unit S1, Park West Industrial Park

Friel Avenue

Nangor Road

Dublin 12, Ireland

TEL: +353 1 620 9300

FAX: +353 1 620 9301

PARTS MANUAL

This document lists and illustrates the replaceable assemblies and parts of this product, as manufactured by UpRight, Inc. Each parts list contains the component parts for that assembly.

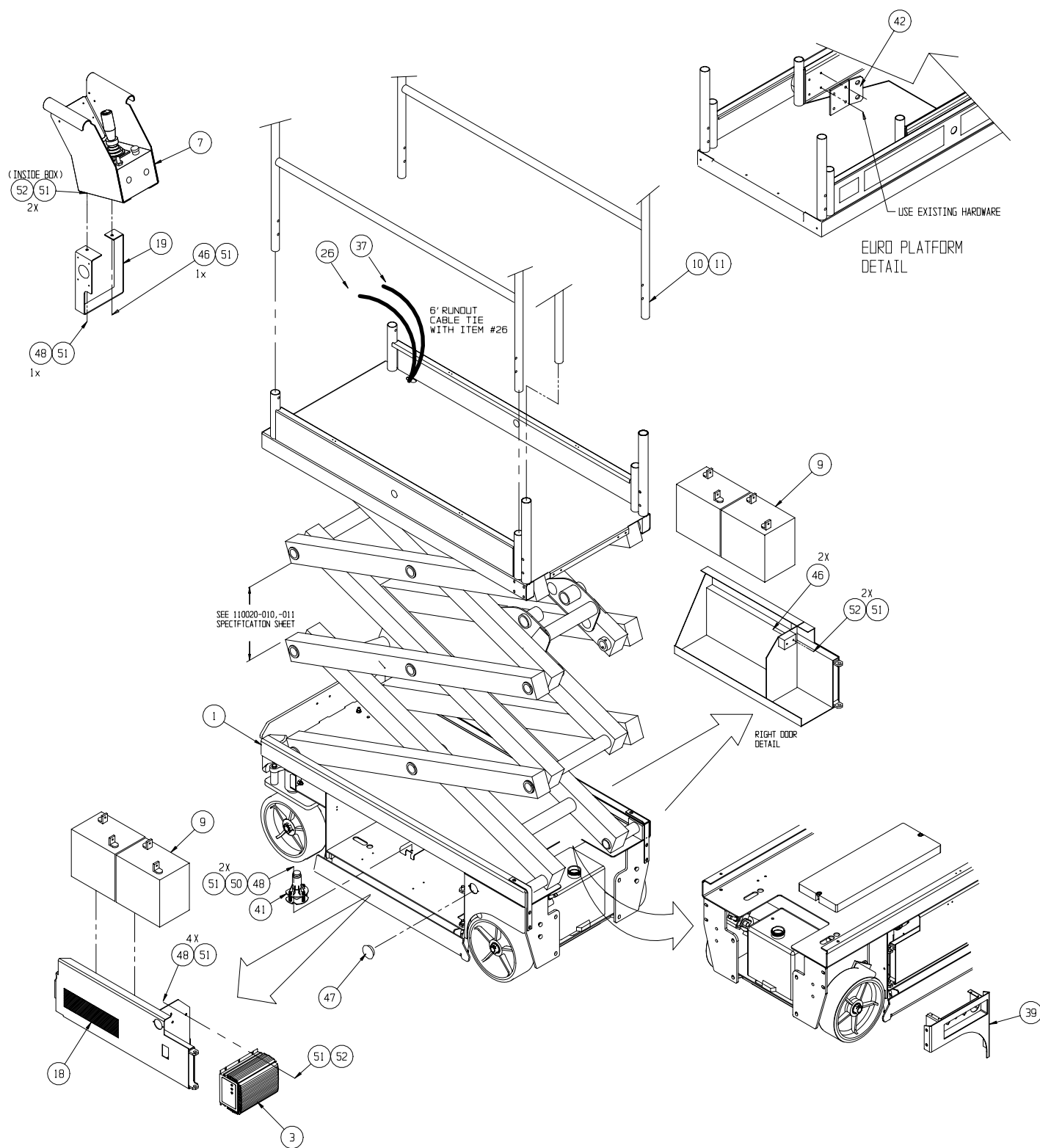
TABLE OF CONTENTS

Final Assembly - MX15		Hose Kit Installation	
065600-031	2	065611-021	30
Final Assembly - MX19		Hydraulic Tank Assembly	
065700-031	4	101152-001	32
Final Assembly Wiring - MX15		Valve Block Assembly	
065607-000	6	113052-000	33
Final Assembly Wiring - MX19		Valve Block	
065607-001	8	101120-122	34
Controller Assembly		Power Unit Assembly	
066013-026	10	113055-000	36
PQ Controller		Drive Motor Assembly	
065512-000	12	113050-000	37
Lower Controls (Wheel Cover Assembly)		Steering Cylinder Assembly	
065980-005	13	113051-000	38
Basic Assembly - MX15		Depression Cylinder Assembly	
065601-030	14	113053-000	39
Basic Assembly - MX19		Brake Cylinder Assembly	
065701-030	16	113054-000	40
Scissor Arm Assembly - MX15		Overload Alarm	
065605-020	18	065720-020	41
Scissor Arm Assembly - MX19		Horn Assembly	
065705-020	20	066614-020	42
Platform Guardrail Installation		Hour Meter/Low Voltage Indicator	
065603-005	22	066613-020	43
Deck Extension Assembly		Removable Controller Option	
065614-000	23	061898-001	44
Proximity Switch Assembly		Label Installation - MX15	
067193-001	24	065612-034	46
Chassis Assembly		Label Installation - MX19	
065602-030	26	065712-034	46

Final Assembly - MX15

065600-031

ITEM	PART	DESCRIPTION	QTY	ITEM	PART	DESCRIPTION	QTY
1	065601-030	BASIC ASSY	1	20	060540-021	DOCUMENTATION KIT	1
2	065607-000	FINAL ASSY WIRING - MX15	1	21	060569-026	SERVICE MANUAL	1
3	069199-000	CHARGER	1	22	060546-026	PARTS MANUAL	1
5	065720-020	OVERLOAD ALARM	1	23	060570-028	USER MANUAL	1
6	066614-020	OPERATOR HORN ASSEMBLY	1	26	065609-020	CONTROL CABLE ASSY	REF
7	066013-026	CONTROLLER ASSEMBLY	1	37	029435-099	WIRE AWG 14 GA 3 CONN.	37 FT.
9	015796-000	BATTERY 6 V	4	39	065980-005	WHEEL COVER ASSY	1
10	065614-000	EXTENSION DECK	1	41	029945-031	LEVEL SENSOR ASSY	1
11	065603-005	PLATFORM/GUARDRAIL ASSY	1	42	030714-013	HARNESS HARDPOINT	1
14	065611-021	HOSE KIT / INST.	1	46	011252-012	SCREW HHCS 1/4-20 X 1 1/2	3
15	065615-023	HYDRAULIC SCHEMATIC	REF	47	064462-016	HOLE PLUG 1-7/8	2
16	065616-027	ELECTRICAL SCHEMATIC	REF	48	011252-006	SCREW HHC 1/4-20UNC X 3/4	7
17	110020-011	MX SPECIFICATION SHEET	REF	50	011238-004	WASHER 1/4 LOCK	2
18	065612-034	LABEL KIT / INSTALLATION	1	51	011240-004	WASHER 1/4 STD FLAT	12
19	065746-002	CONTROLLER GUIDE-WIDE	1	52	011248-004	NUT HEX ESNA 1/4-20UNC	8

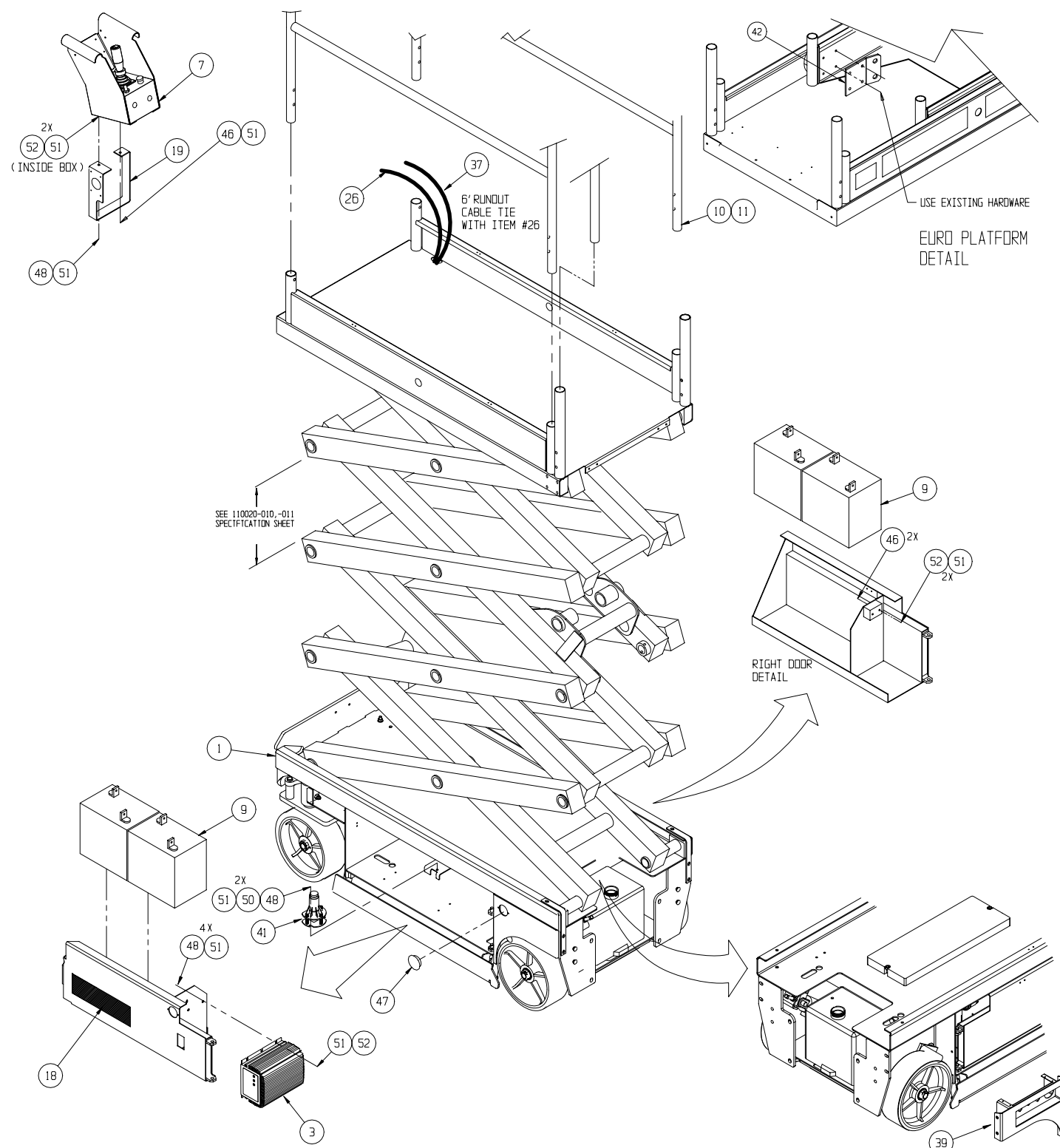


Final Assembly - MX19

065700-031

ITEM	PART	DESCRIPTION	QTY
1	065701-030	BASIC ASSY	1
2	065607-001	FINAL ASSY WIRING	1
3	069199-000	CHARGER	1
5	065720-020	OVERLOAD ALARM	1
6	066614-020	OPERATOR HORN ASSEMBLY	1
7	066013-026	CONTROLLER ASSEMBLY	1
9	015796-000	BATTERY 6 V	4
10	065614-000	EXTENSION DECK	1
11	065603-005	PLATFORM/GUARDRAIL ASSY	1
14	065611-021	HOSE KIT / INST.	1
15	065615-023	HYDRAULIC SCHEMATIC	REF
16	065616-027	ELECTRICAL SCHEMATIC	REF
17	110020-011	MX SPECIFICATION SHEET	REF
18	065712-034	LABEL KIT / INSTALLATION	1
19	065746-002	CONTROLLER GUIDE-WIDE	1
20	060540-021	DOCUMENTATION KIT	1

ITEM	PART	DESCRIPTION	QTY
21	060569-026	SERVICE MANUAL	1
26	065609-021	CONTROL CABLE ASSY	REF
27	060546-026	PARTS MANUAL	1
28	060570-028	USER MANUAL	1
37	029435-099	WIRE AWG 14 GA 3 CONN.	37 FT.
39	065980-005	WHEEL COVER ASSY	1
41	029945-031	LEVEL SENSOR ASSY	1
42	030714-013	HARNESS HARDPOINT	1
45	013283-002	CABLE MOUNT	2
46	011252-012	SCREW HHCS 1/4-20 X 1 1/2	3
47	064462-016	HOLE PLUG 1-7/8	2
48	011252-006	SCREW, 1/4-20UNC X 3/4	7
50	011238-004	WASHER 1/4 LOCK	2
51	011240-004	WASHER 1/4 STD FLAT	12
52	011248-004	NUT HEX ESNA 1/4-20UNC	8

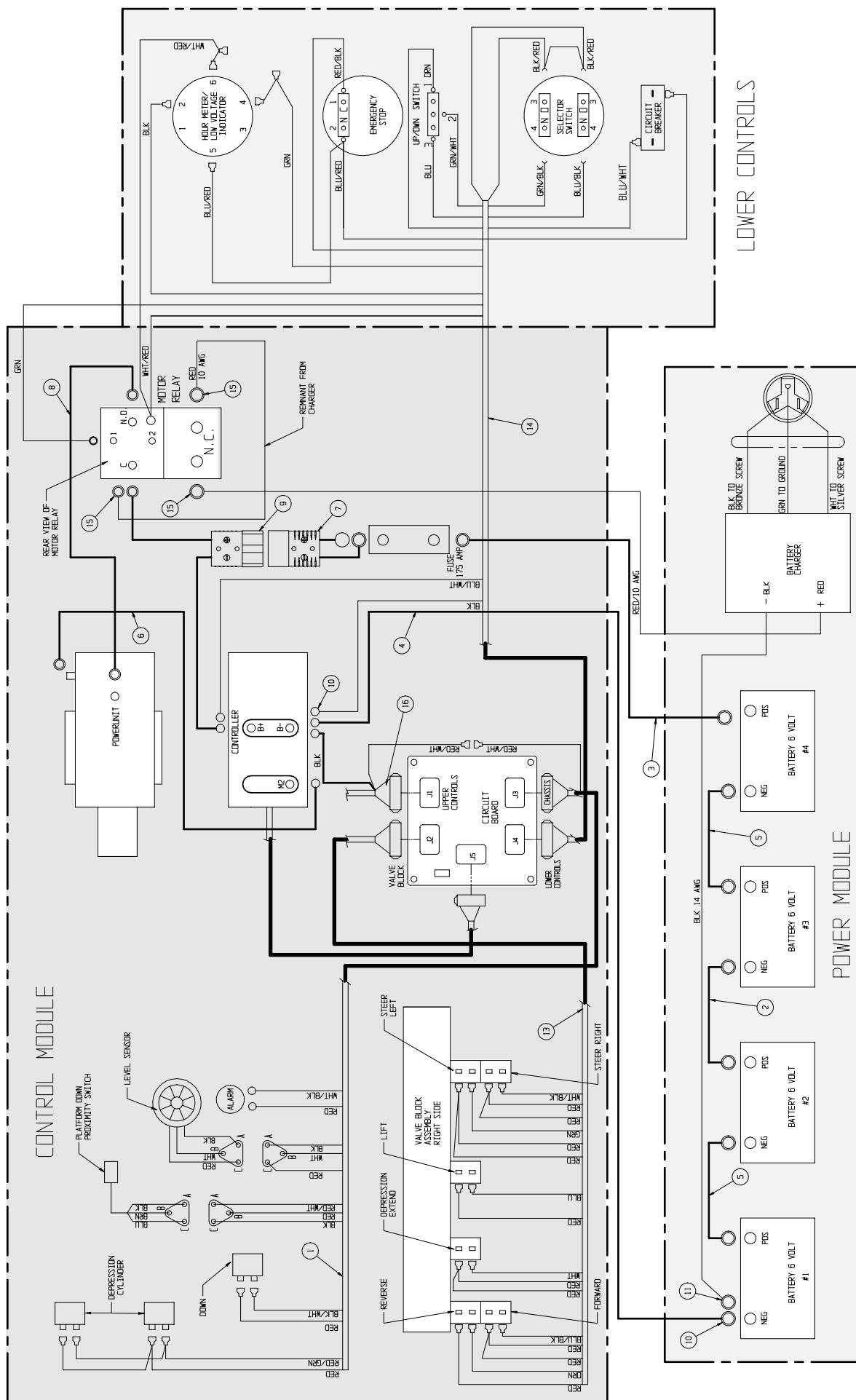


Final Assembly Wiring - MX15

065607-000

ITEM	PART	DESCRIPTION	QTY
1	065943-004	WIRE HARNESS ASSY	1
2	062125-118	CABLE ASSY X 118	1
3	064195-022	CABLE ASSY X 22	1
4	064195-062	CABLE ASSY X 62	1
5	064195-015	CABLE ASSY X 15	2
6	062125-016	CABLE ASSY X 16	1
7	101182-001	CABLE ASSY W/CONNECTOR	1
8	062125-019	CABLE ASSY X 19	1

ITEM	PART	DESCRIPTION	QTY
9	101182-002	CABLE ASSY W/CONNECTOR	1
10	010154-001	COVER - BATTERY TERMINAL	10
11	029601-039	CONN. RING 5/16 10-12	3
13	065942-003	CABLE ASSY - VALVE BLOCK	1
14	067340-001	WIRE ASSY - LOWER CONTROLS	1
15	029601-021	CONN. RING 3/8 10-12	3
16	065609-020	CONTROL CABLE ASSY - MX15	1

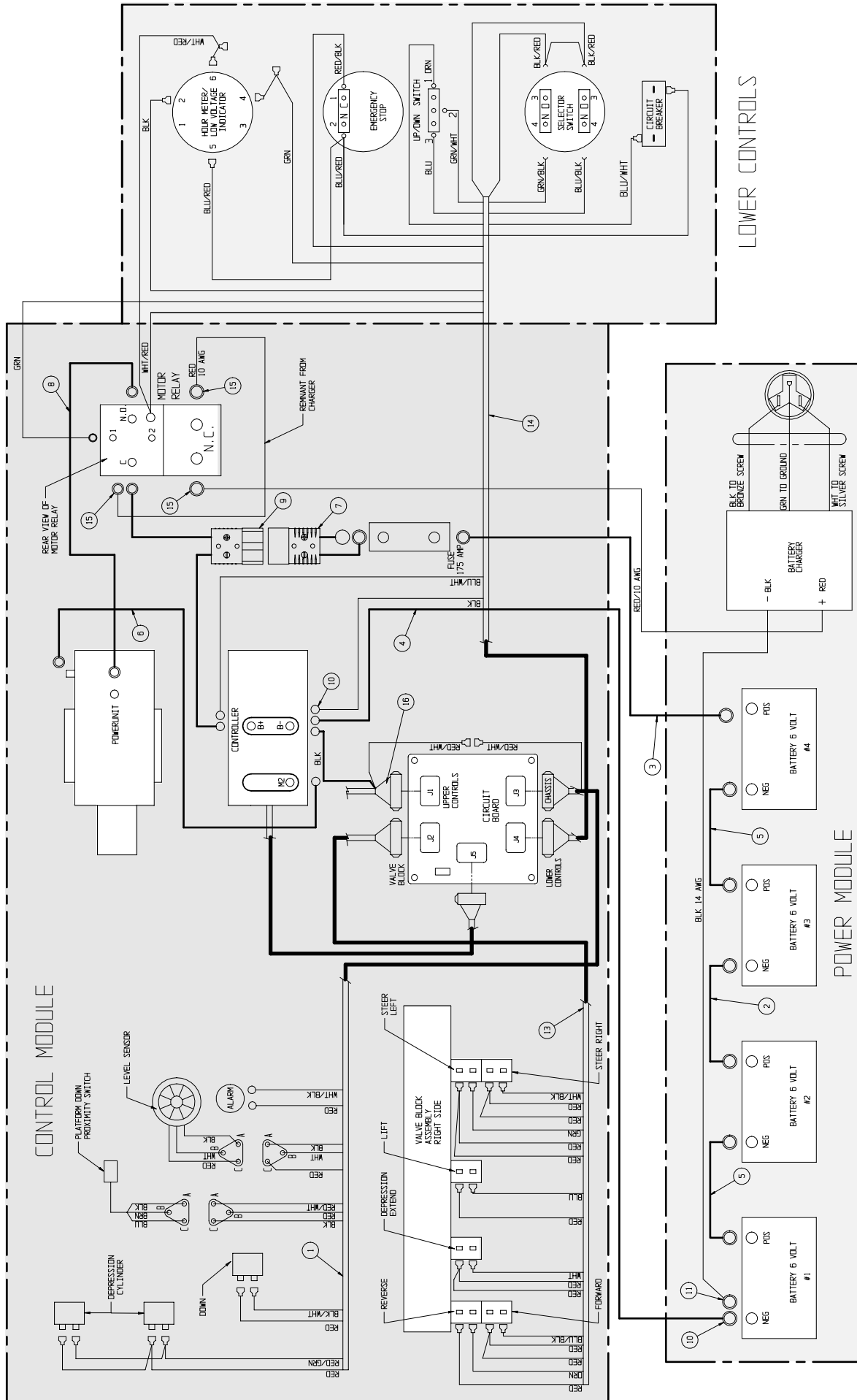


Final Assembly Wiring - MX19

065607-001

ITEM	PART	DESCRIPTION	QTY
1	065943-004	WIRE HARNESS ASSY	1
2	062125-118	CABLE ASSY X 118	1
3	064195-022	CABLE ASSY X 22	1
4	064195-062	CABLE ASSY X 62	1
5	064195-015	CABLE ASSY X 15	2
6	062125-016	CABLE ASSY X 16	1
7	101182-001	CABLE ASSY W/CONNECTOR	1
8	062125-019	CABLE ASSY X 19	1

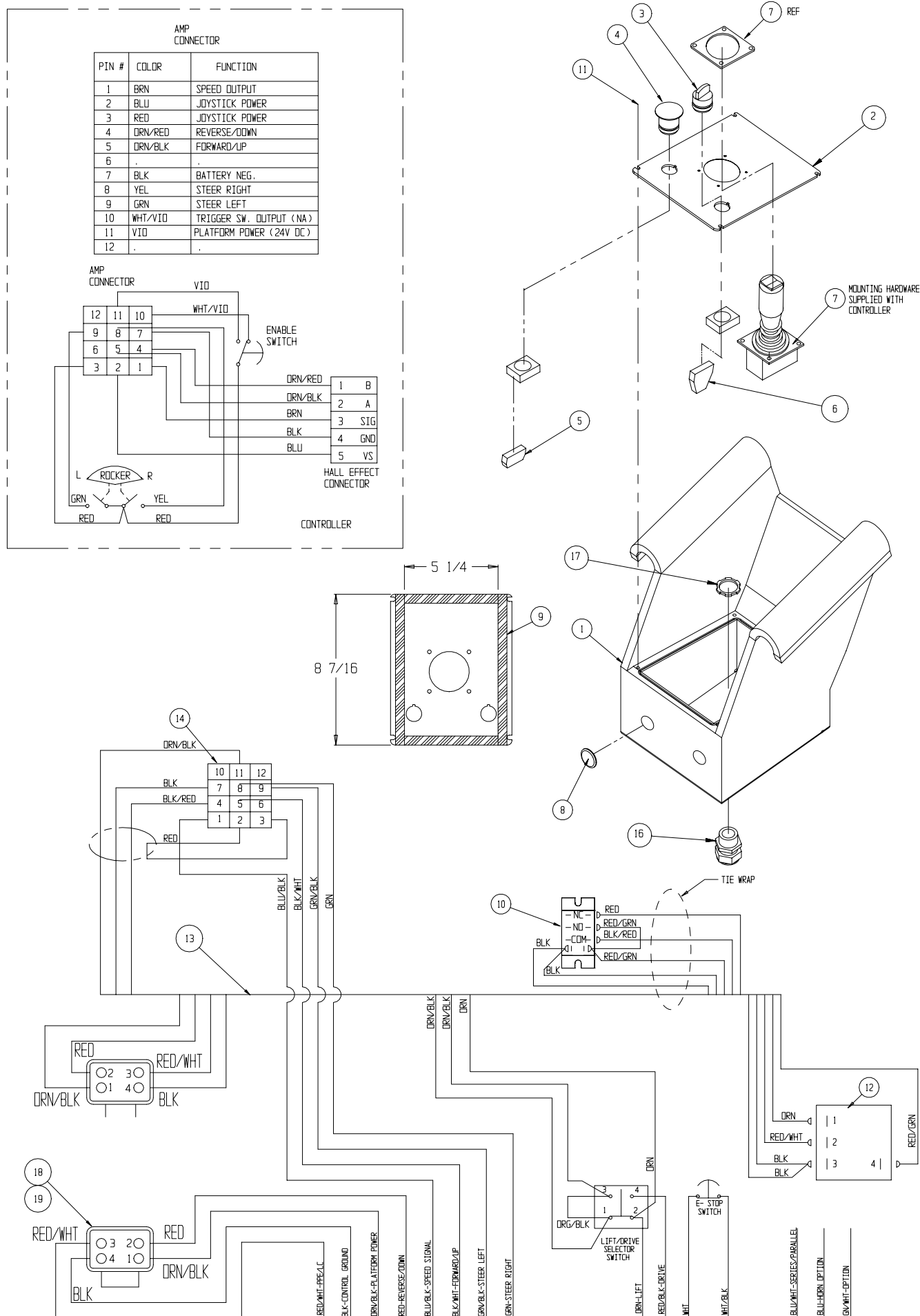
ITEM	PART	DESCRIPTION	QTY
9	101182-002	CABLE ASSY W/CONNECTOR	1
10	010154-001	COVER - BATTERY TERMINAL	10
11	029601-039	CONN. RING 5/16 10-12	3
13	065942-003	CABLE ASSY - VALVE BLOCK	1
14	067340-001	WIRE ASSY - LOWER CONTROLS	1
15	029601-021	CONN. RING 3/8 10-12	3
16	065609-021	CONTROL CABLE ASSY - MX19	1



Controller Assembly

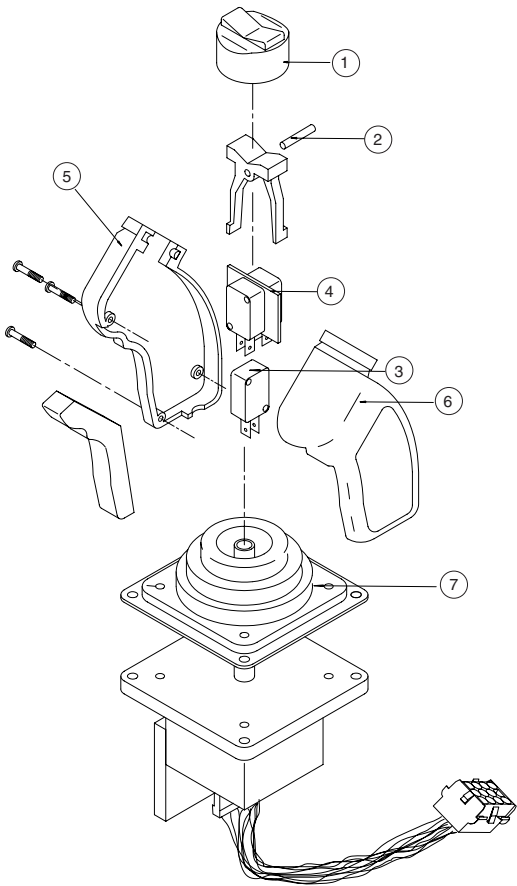
066013-026

ITEM	PART	DESCRIPTION	QTY	ITEM	PART	DESCRIPTION	QTY
1	101188-010	BOX CONTROLLER	1	10	063951-002	RELAY 24V	1
2	101223-003	COVER CONTROLLER	1	11	011761-004	SCREW MACH SLOTTED TRUSS HD #10-24 X 1/2	4
3	066805-002	SWITCH SELECTOR-2 POSITION	1	12	113056-000	RELAY, TIME DELAY	1
4	066805-006	SWITCH PUSH BUTTON	1	13	101240-004	CABLE ASSY CONTROLLER PPE	1
5	066805-011	CONTACT NC	1	14	063956-003	CONN 12 PIN	1
6	066805-012	CONTACT NO - NC	1	16	029925-010	CONN CABLE	1
7	065512-000	CONTROLLER PQ	1	17	029939-003	LOCKNUT 3/4	1
8	063926-011	PLUG CAPLUG #CCF 1-14-20	1	18	067990-020	4 PIN RECEPTACLE	1
9	068889-099	WEATHERSTRIP	2.3 FT.	19	067990-023	4 PIN WEDGE	1



PQ Controller
065512-000

ITEM	PART NO.	DESCRIPTION	QTY
1	063953-001	CAP, RUBBER	1
2	065512-013	ROCKER, PIN	1
3	063953-007	SWITCH, INTERLOCK	1
4	065512-015	SWITCH, STEERING	1
5	065512-016	HANDLE HALF, RIGHT	1
6	065512-017	HANDLE HALF, LEFT	1
7	065512-018	BOOT, HANDLE	1

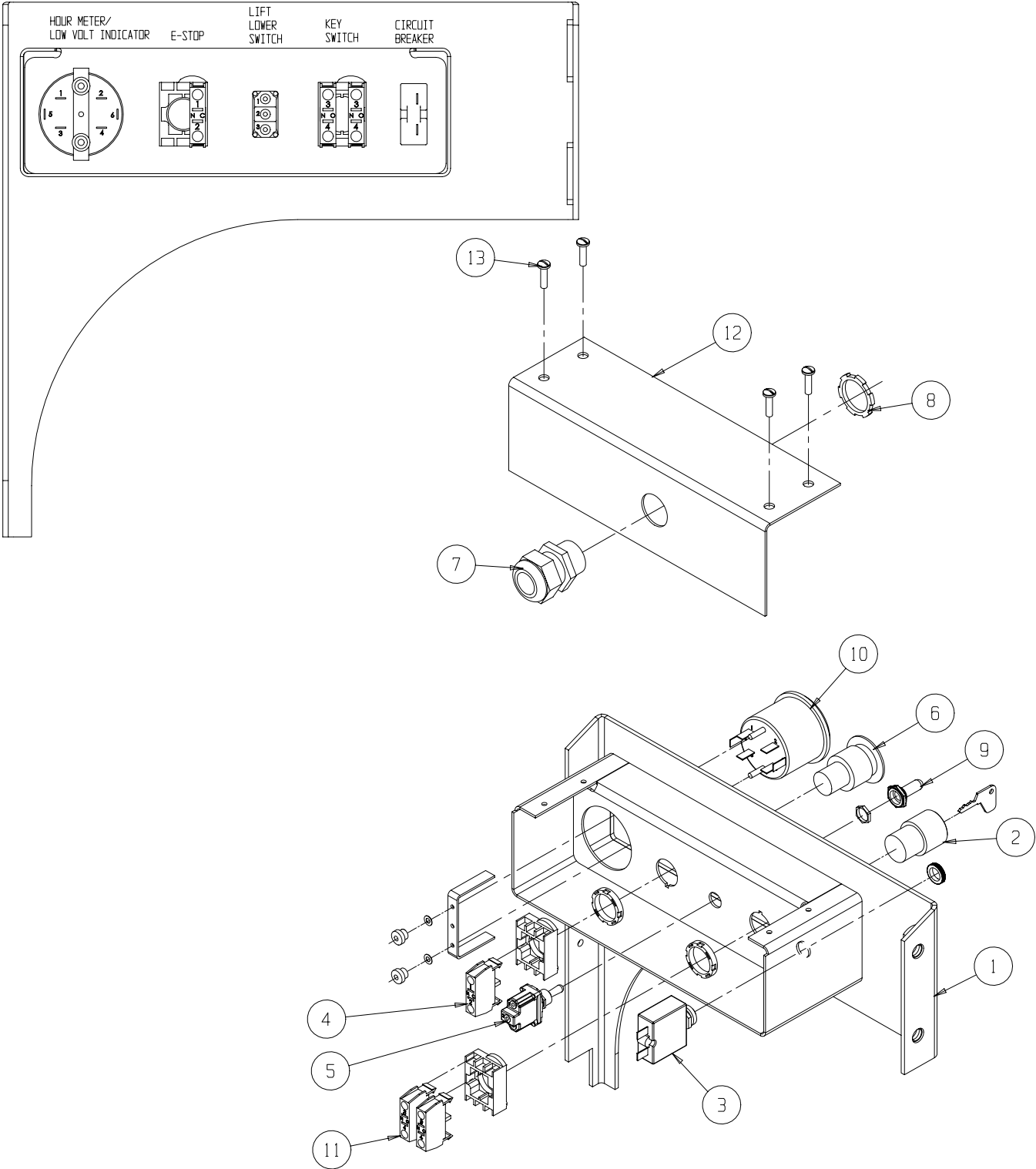


Lower Controls (Wheel Cover Assembly)

065980-005

ITEM	PART NO.	DESCRIPTION	QTY
1	065979-001	WHEEL COVER WELDMENT	1
2	066805-004	KEYSWITCH 3 POS	1
3	068582-005	CIRCUIT BREAKER	1
4	066805-011	SWITCH CONTACT BLOCK NC	1
5	012798-000	SWITCH TOGGLE	1
6	066805-006	SWITCH HEAD MUSHROOM	1
7	029925-010	CONNECTOR CABLE	1

ITEM	PART NO.	DESCRIPTION	QTY
8	029939-003	LOCKNUT 3/4 NPT	1
9	029872-000	BOOT SWITCH COVER	1
10	029959-000	HOURLMETER / LOW VOLT	1
11	066805-010	CONTACT BLOCK N.O.	2
12	065978-000	COVER	1
13	011811-006	SCREW SLFTP F HWH 10-32 X 3/4	4

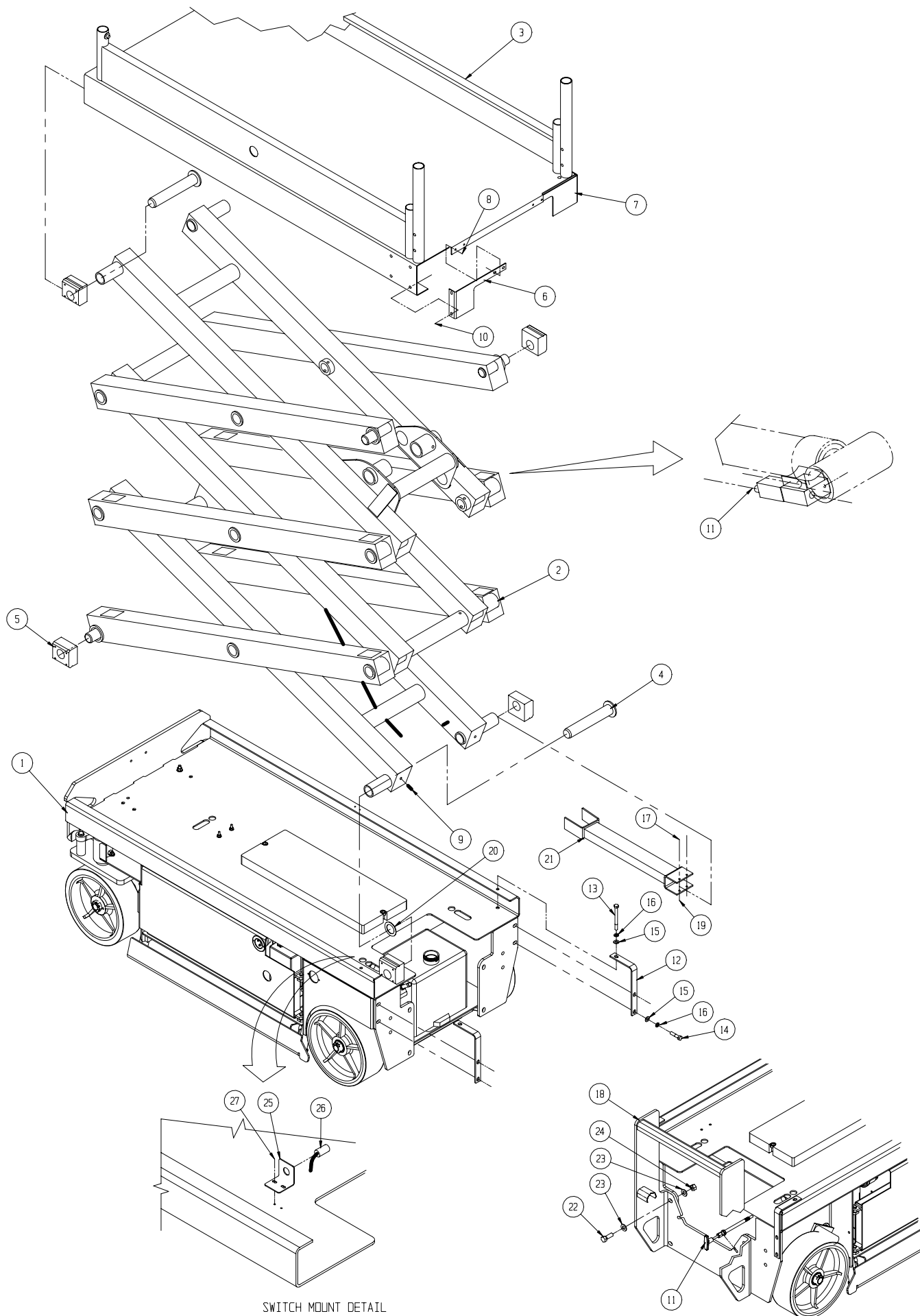


Basic Assembly - MX15

065601-030

ITEM	PART	DESCRIPTION	QTY
1	065602-030	CHASSIS ASS'Y	1
2	065605-020	SCISSOR ARM ASS'Y- X15	1
3	066250-001	PLATFORM WELDMENT	1
4	065698-000	LOWER PIVOT PIN WELDMENT	4
5	065726-000	SLIDE PAD	8
6	065728-000	DECK BRACKET L.H.	1
7	065727-000	DECK BRACKET R.H.	1
8	014027-006	SCREW HHD SLFTP 1/4-28 x 3/4	4
9	011739-020	ROLLPIN 3/8 DIA. x 2 1/2	4
10	014066-008	SCREW SLFTP 1/4-AB x 1	16
11	065754-006	EMERGENCY LOWERING CABLE	1
12	065937-001	BEARING RETENTION ANGLE	2
13	011254-034	SCREW HHC 3/8-16UNC X 4 1/4	2
14	011254-014	SCREW HHC 3/8-16UNC X 1 3/4	4

ITEM	PART	DESCRIPTION	QTY
15	011240-006	WASHER 3/8 STD FLAT	4
16	011238-006	LOCK WASHER - 3/8" SPLIT RING	6
17	011829-022	CARRIAGE BOLT 1/4-20 X 2-3/4 PLATED	2
18	066307-006	LADDER WELDMENT - MX15	1
19	011248-004	LOCKNUT 1/4-20 UNC ESNA	2
20	011786-007	BUSHING - MACHINERY	2
21	065764-000	SCISSOR CHOCK WELDMENT X15/19	1
22	011256-012	SCREW HHC 1/2-13UNC X 1 1/2	4
23	011240-008	WASHER 1/2 STD FLAT	8
24	011248-008	LOCKNUT 1/2-13 UNC ESNA	4
25	067318-000	SWITCH BRACKET	1
26	067193-001	SWITCH ASSY	1
27	011252-006	SCREW - 1/4-20 UNC X 3/4	2



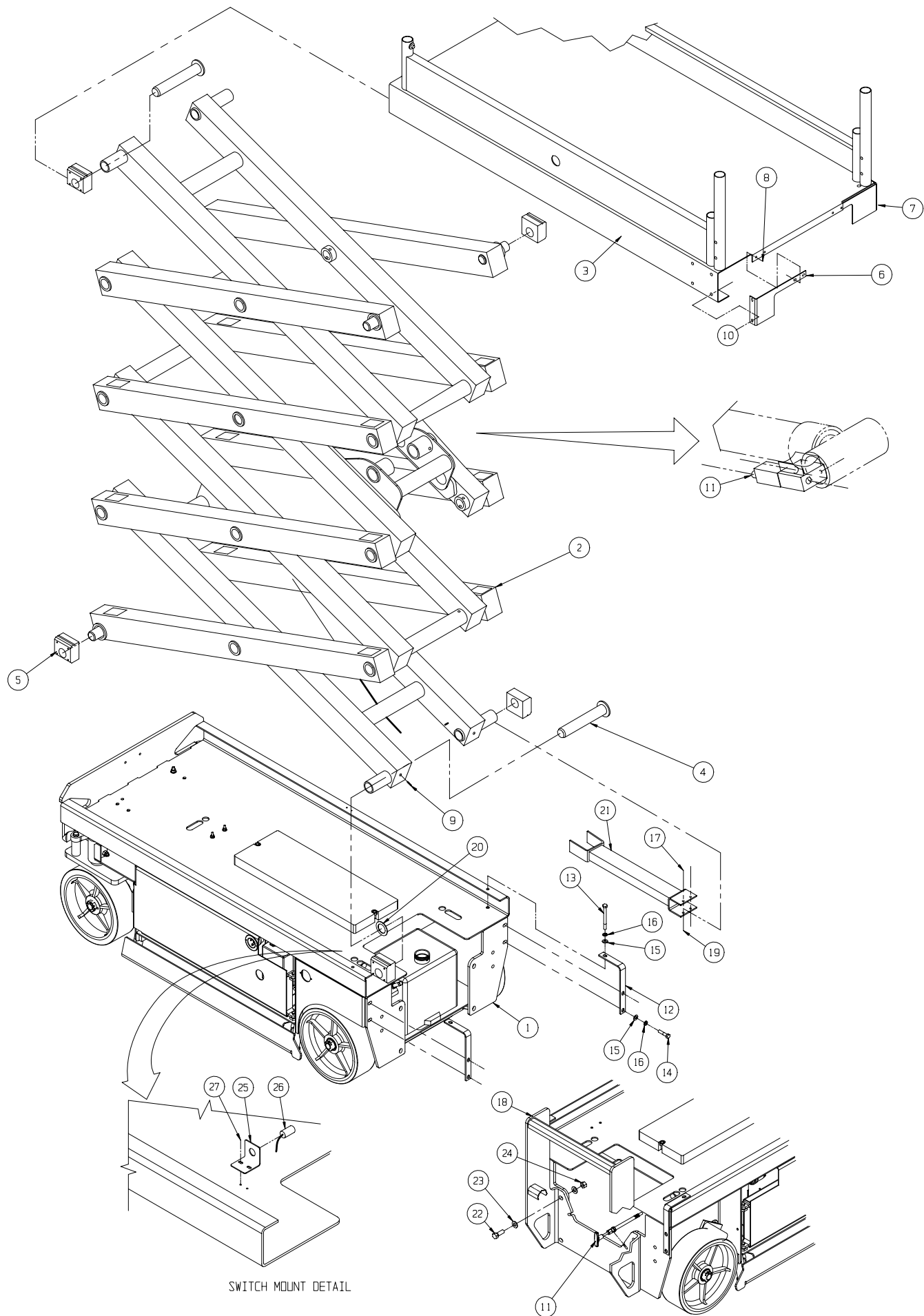
SWITCH MOUNT DETAIL

Basic Assembly - MX19

065701-030

ITEM	PART	DESCRIPTION	QTY
1	065602-030	CHASSIS ASS'Y	1
2	065705-020	SCISSOR ARM ASS'Y X19	1
3	066250-001	PLATFORM WELDMENT	1
4	065698-000	LOWER PIVOT PIN WELDMENT	4
5	065726-000	SLIDE PAD	8
6	065728-000	DECK BRACKET L.H.	1
7	065727-000	DECK BRACKET R.H.	1
8	014027-006	SCREW HHD SLFTP 1/4-28 x 3/4	4
9	011739-020	ROLLPIN 3/8 DIA. x 2 1/2	4
10	014066-008	SCREW SLFTP 1/4-AB x 1	16
11	065754-006	EMERGENCY LOWERING CABLE	1
12	065937-001	BEARING RETENTION ANGLE	2
13	011254-034	SCREW HHC 3/8-16UNC X 4 1/4	2
14	011254-014	SCREW HHC 3/8-16UNC X 1 3/4	4

ITEM	PART	DESCRIPTION	QTY
15	011240-006	WASHER 3/8 STD FLAT	4
16	011238-006	LOCK WASHER - 3/8" SPLIT RING	6
17	011829-022	CARRIAGE BOLT 1/4-20 X 2-3/4 PLATED	2
18	066307-005	LADDER WELDMENT	1
19	011248-004	LOCKNUT 1/4-20 UNC ESNA	2
20	011786-007	BUSHING - MACHINERY	2
21	065764-000	SCISSOR CHOCK WELDMENT X15/19	1
22	011256-012	SCREW HHC 1/2-13UNC X 1 1/2	4
23	011240-008	WASHER 1/2 STD FLAT	8
24	011248-008	LOCKNUT 1/2-13 UNC ESNA	4
25	067318-000	SWITCH BRACKET	1
26	067193-001	SWITCH ASSY	1
27	011252-006	SCREW - 1/4-20 UNC X 3/4	2

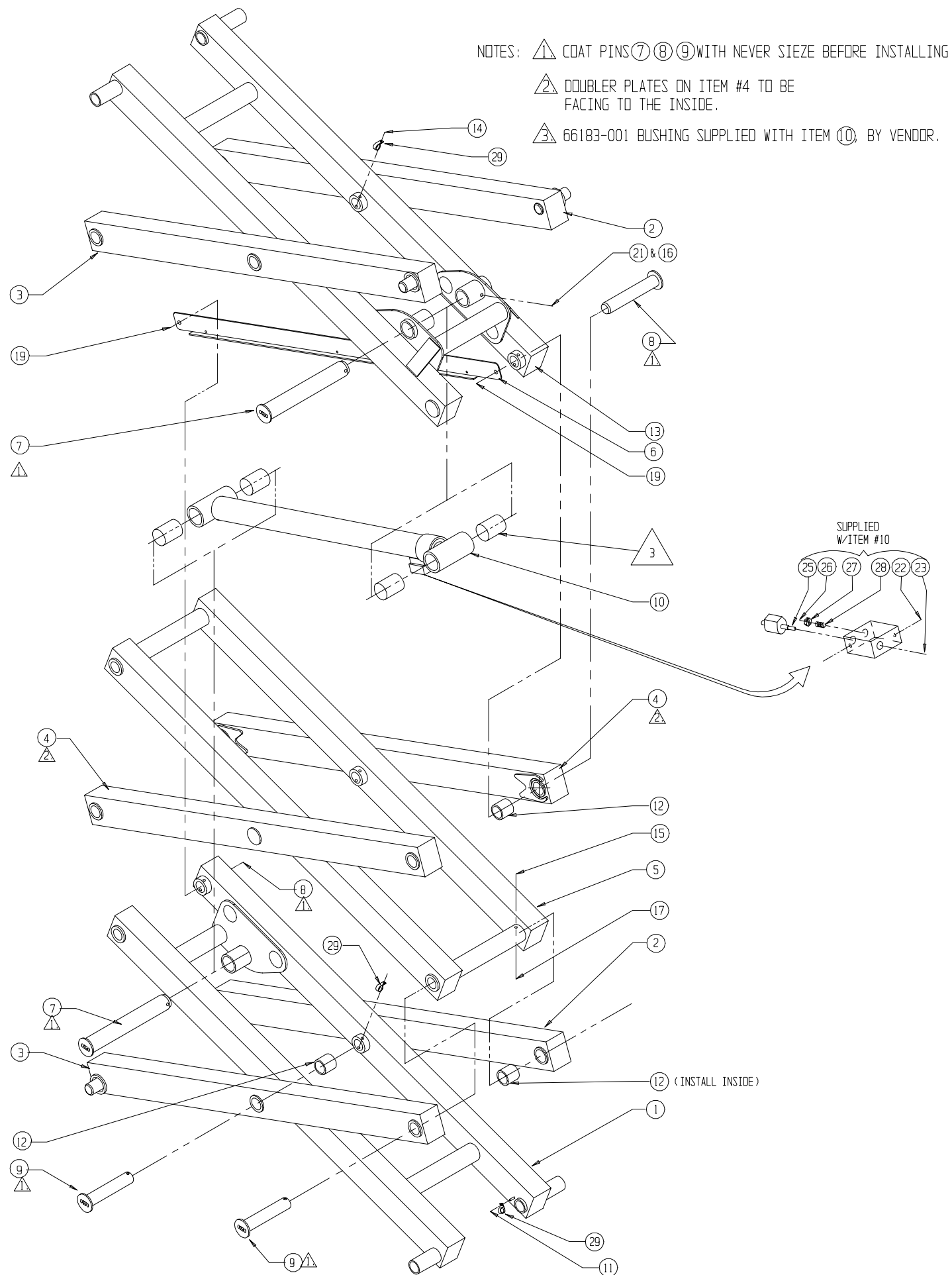


Scissor Arm Assembly - MX15

065605-020

ITEM	PART	DESCRIPTION	QTY
1	065640-000	INNER ARM WELDMENT	1
2	065671-000	OUTER BEAM EWLDMENT R.H.	2
3	065672-000	OUTER BEAM WELDMENT L.H.	2
4	065675-001	OUTER BEAM WELDMENT	2
5	065677-000	INNER CENTER BEAM WELDMENT	1
6	065687-000	CABLE GUIDE	1
7	065696-000	CYLINDER PIN WELDMENT	2
8	065697-000	PIN KEEPER WELDMENT	2
9	065920-000	PIVOT PIN WELDMENT	12
10	065372-021	LIFT CYLINDER ASSY.	1
	065372-012	SEAL KIT, LIFT CYLINDER	
11	011248-004	LOCKNUT 1/4-20UNC HEX	1
12	066183-002	BUSHING	14
13	065640-001	INNER ARM WELDMENT	1

ITEM	PART	DESCRIPTION	QTY
14	011253-024	SCREW 5/16-18UNC HHC X 3	3
15	011253-022	SCREW 5/16-18UNC HHC X 2 3/4	11
16	011254-026	SCREW 3/8-16UNC HHC X 3 1/4	2
17	011248-005	LOCKNUT 5/16-18UNC HEX	14
19	065688-000	GUARD RIVET	2
21	011248-006	LOCKNUT 3/8-16UNC HEX	2
22	012004-004	PLUG #4	REF
23	012004-006	PLUG #6	REF
25	066179-000	VALVE	REF
26	011941-005	FITTING 6MB-6MJ ST	REF
27	015919-001	ORIFICE #840	REF
28	05133-000	SPRING	REF
29	013919-009	CLAMP	3

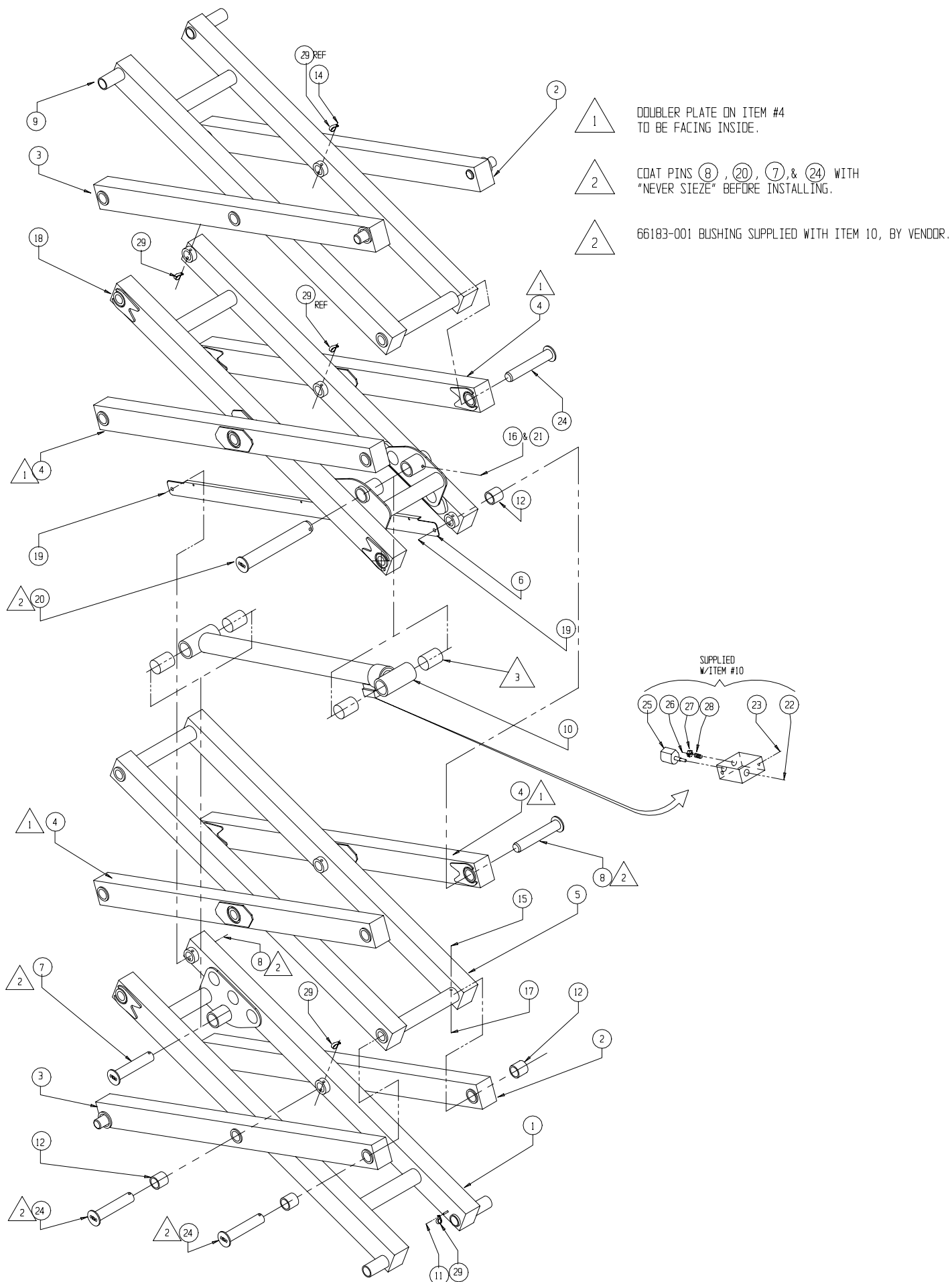


Scissor Arm Assembly - MX19

065705-020

ITEM	PART	DESCRIPTION	QTY
1	065640-001	INNER ARM WELDMENT	1
2	065671-000	OUTER BEAM WELDMENT R.H.	2
3	065672-000	OUTER BEAM WELDMENT L.H.	2
4	065675-000	OUTER BEAM WELDMENT	4
5	065677-000	INNER CENTER BEAM WELDMENT	1
6	065687-000	CABLE GUIDE	1
7	065696-000	CYLINDER PIN WELDMENT	1
8	065697-000	PIN KEEPER WELDMENT	2
9	065721-000	UPPER BEAM WELDMENT	1
10	065372-021	LIFT CYLINDER ASSY.	1
	065372-012	SEAL KIT, LIFT CYLINDER	
11	011248-004	LOCKNUT 1/4-20UNC HEX	1
12	066183-002	BUSHING	20
14	011253-024	SCREW 5/16-18UNC HHC X 3	4
15	011253-022	SCREW 5/16-18UNC HHC X 2 3/4	16

ITEM	PART	DESCRIPTION	QTY
16	011254-026	SCREW 3/8-16UNC HHC X 3 1/4	2
17	011248-005	LOCKNUT 5/16-18UNC HEX	20
18	065722-000	INNER BEAM WELDMENT	1
19	065688-000	GUARD RIVET	2
20	065750-000	CYLINDER PIN WELDMENT	1
21	011248-006	LOCKNUT 3/8-16UNC HEX	2
22	012004-004	PLUG #4	REF
23	012004-006	PLUG #6	REF
24	065920-000	PIVOT PIN WELDMENT	18
25	066179-000	VALVE	REF
26	011941-005	FITTING 6MB-6MJ ST	REF
27	015919-001	ORIFICE	REF
28	05133-000	SPRING	REF
29	013919-009	CLAMP	4

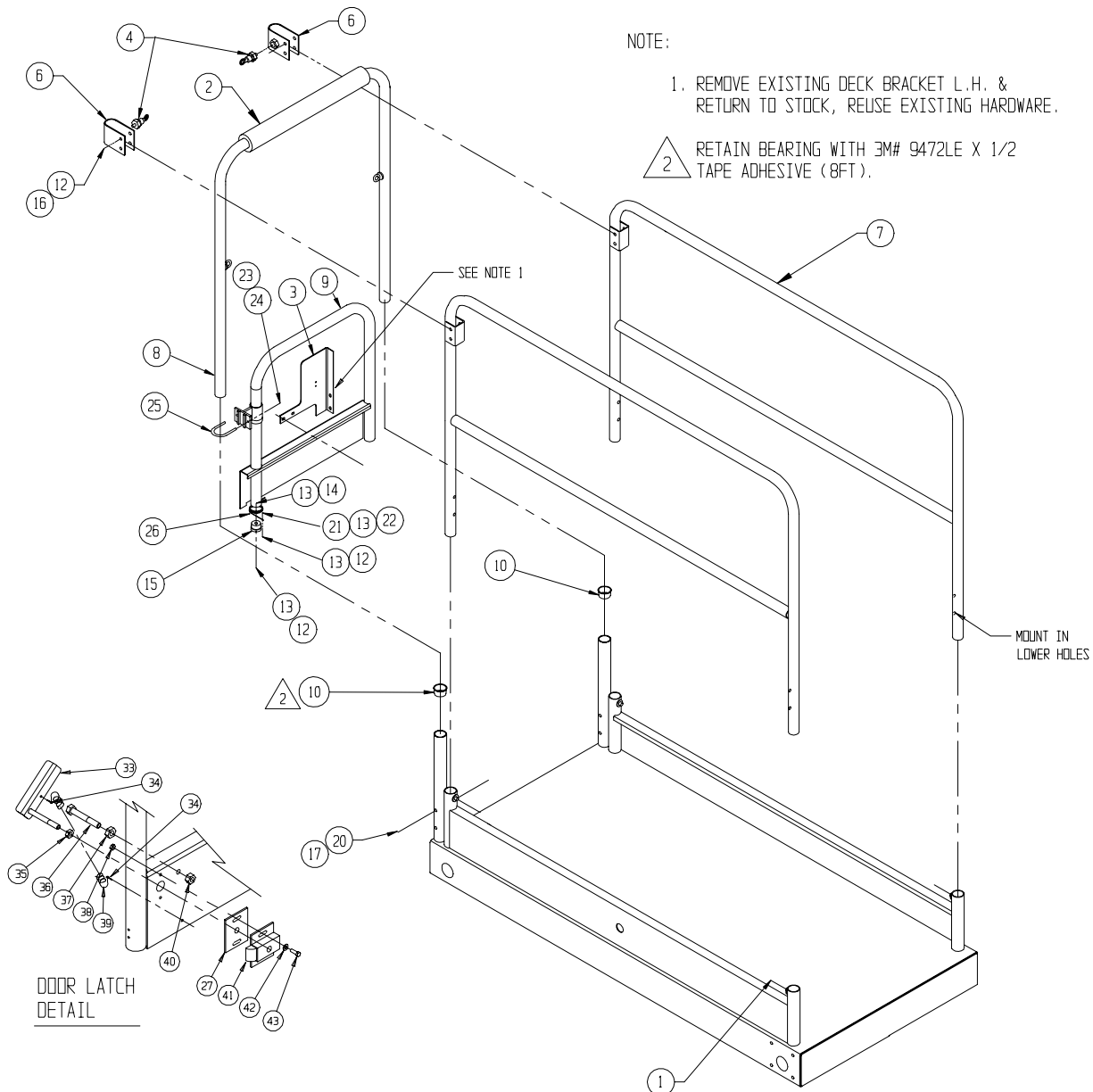


Platform Guardrail Installation

065603-005

ITEM	PART	DESCRIPTION	QTY
1	066171-003	TAP BOLT 3/8 X 2 (FULL THREAD)	4
2	066692-022	FOAM TUBING	1
3	065728-001	DECK BRACKET L.H.	1
4	03570-000	RETAINING PIN ASSY	2
6	066498-000	WELDMENT, GATE LATCH	2
7	066257-007	WELDMENT SIDE RAIL	2
8	066261-001	WELDMENT, END RAIL	1
9	065780-001	GATE WELDMENT	1
10	065987-000	CAPLUG BEARING	2
12	011248-005	NUT 5/16-18	6
13	011240-005	WASHER 5/16 STD FLAT	4
14	011253-016	SCREW 5/16-18 HHC X 2	1
15	065784-001	DOOR SLIDE	1
16	011253-018	SCREW 5/16-18 HHC X 2 1/4	4
17	011254-018	SCREW 3/8-16 HHC X 2 1/4	2
20	011248-006	NUT 3/8-16 HEX	2
21	011250-005	NUT 5/16UNC HEX	1

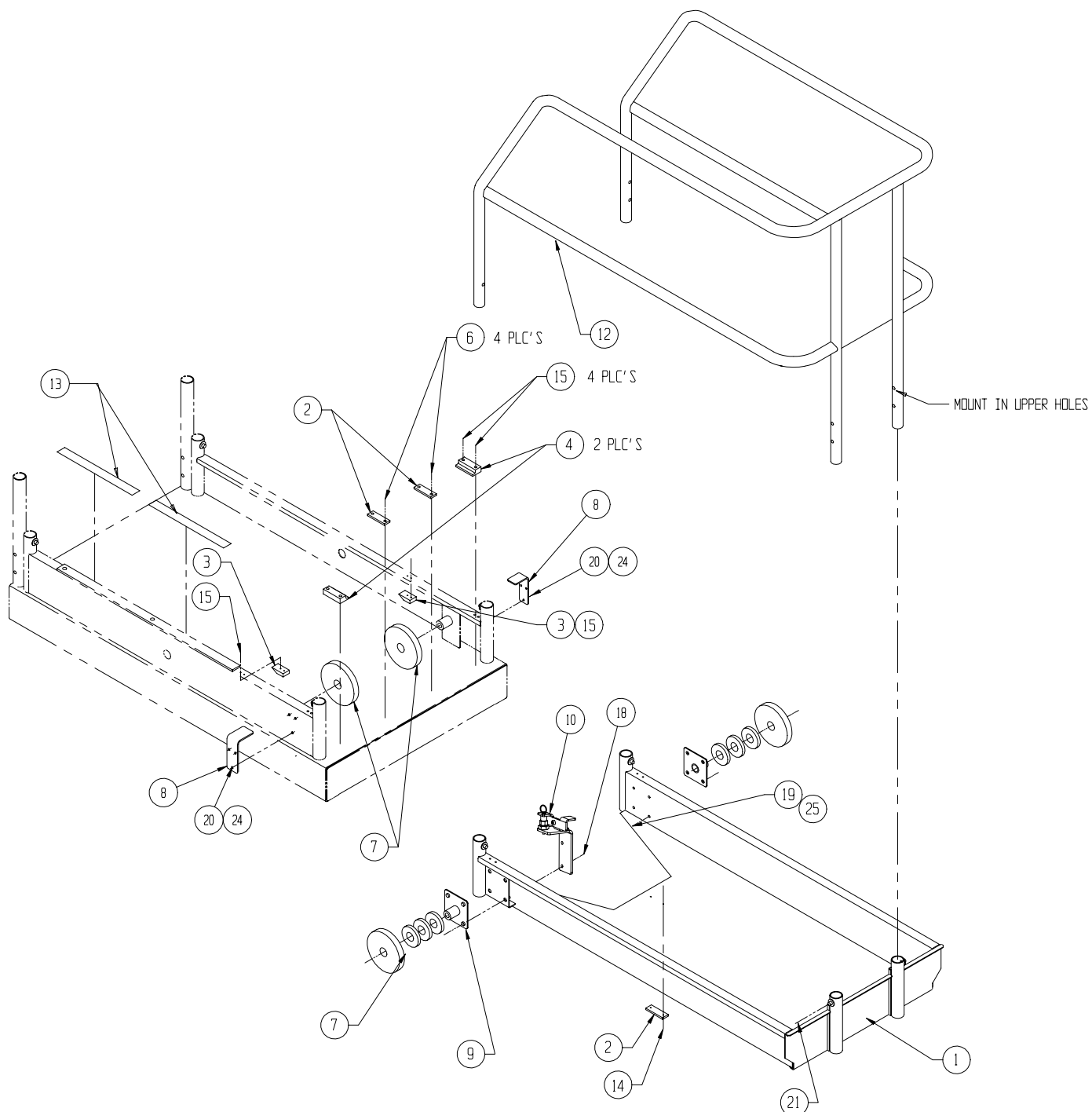
ITEM	PART	DESCRIPTION	QTY
22	011253-006	SCREW 5/16-18UNC X 3/4	1
23	011240-004	WASHER 1/4 STD FLAT	2
24	011248-004	LOCKNUT 1/4-20UNC HEX	2
25	027899-000	U-BOLT	1
26	066526-001	SPRING	1
27	062791-020	SPACER SLAM LATCH	1
33	030745-002	ACTUATOR WELDMENT	1
34	011753-006	COTTER PIN 1/8 X 3/4	2
35	063947-008	NUT HEX 8MM X 1.25	1
36	011254-020	SCREW 3/8-16 HHC X 2 1/2	1
37	020495-012	NUT HEX JAM 3/8-16UNC	1
38	011248-003	NUT HEX ESNA 10-32	2
39	012097-018	EXTENSION SPRING	1
40	011248-006	NUT HEX ESNA 3/8-16	1
41	062791-000	SLAM LATCH	1
42	011240-003	WASHER STD FLAT #10	2
43	011275-004	SCREW 10-32 HHC X 1/2	2



Deck Extension Assembly

065614-000

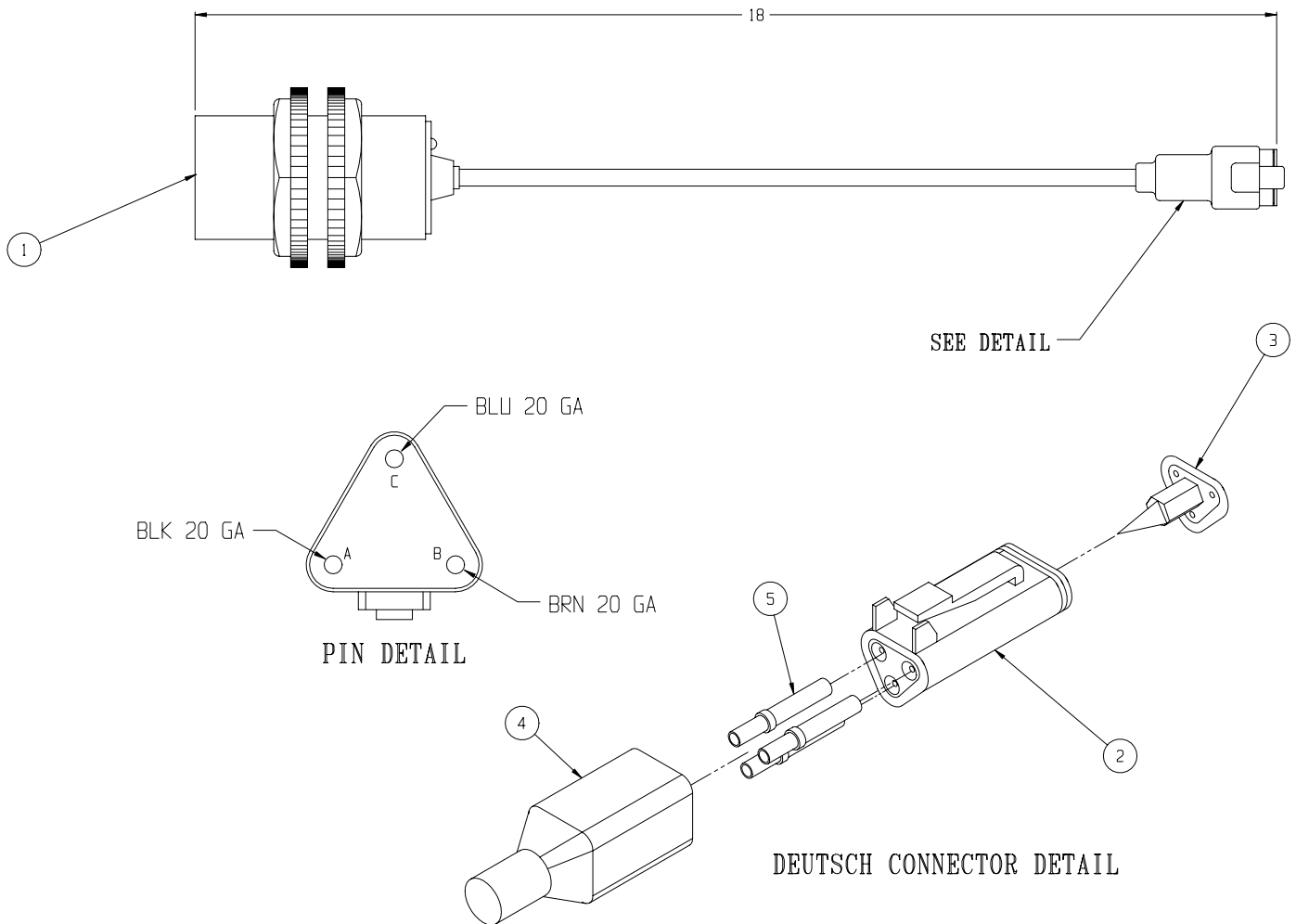
ITEM	PART	DESCRIPTION	QTY	ITEM	PART	DESCRIPTION	QTY
1	066251-001	WELDMENT DECK EXT.	1	13	065988-099	TAPE UHMW 1"	FT 3
2	066198-000	WEAR PAD	3	14	026553-004	RIVET 3/16 DIA X 3/8 GRIP	2
3	066193-000	STOP	2	15	026553-008	RIVET 3/16 DIA X 1/2 GRIP	8
4	066176-000	WEAR PAD	2	18	011254-016	SCREW HHC 3/8-16 X 2	2
6	026553-002	RIVET 3/16 DIA X .126-.250	4	19	011254-014	SCREW HHC 3/8-16 X 1 3/4	6
7	066195-000	PLATFORM ROLLER	4	20	011252-006	SCREW HHC 1/4-20 X 3/4	8
8	066407-011	BRACKET	2	21	066171-003	BOLT TAP 3/8-16UNC X 2	4
9	066256-000	WELDMENT ROLLER MOUNT	2	24	011240-004	WASHER 1/4 FLAT	16
10	067185-000	WELDMENT DECK STOP	1	25	011238-006	WASHER 3/8 LOCK	8
12	066260-001	WELDMENT EXT. RAIL X15	1	26	014996-020	WASHER SAE 1-1/4 ZINC PLATED	6



Proximity Switch Assembly

067193-001

ITEM	PART	DESCRIPTION	QTY
1	REF.	PROX. SWITCH, LOCON IKCT3014	1
2	067456-000	CONNECTOR, DEUTSCH #DT06-3S-P012	1
3	067456-002	LOCKING WEDGE, DEUTSCH #W3S-P012	1
4	067456-005	BOOT, DEUTSCH #DT3S-BT	1
5	068762-003	CONTACT, DEUTSCH #0462-201-16141	3



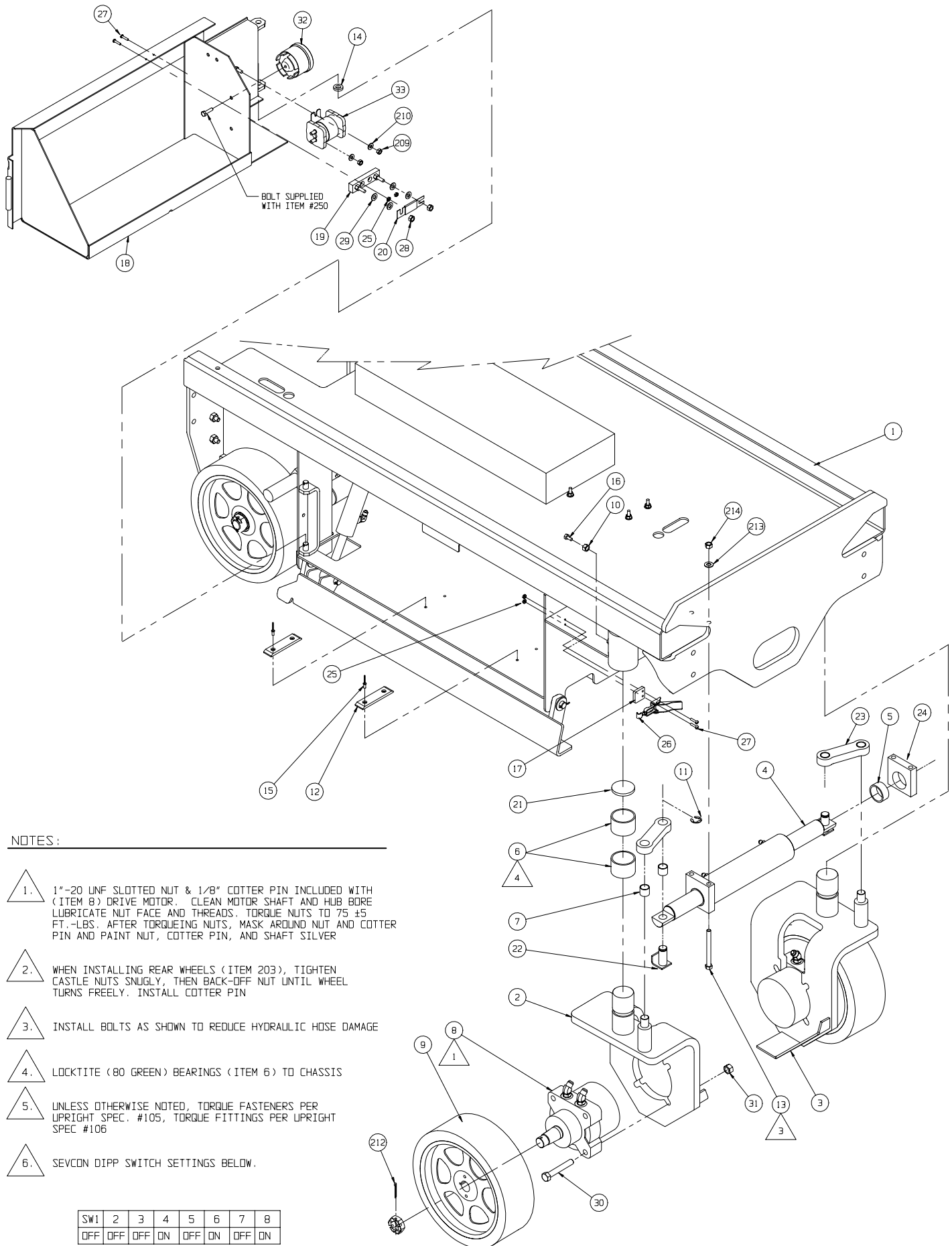
NOTES:

Chassis Assembly

065602-030

ITEM	PART	DESCRIPTION	QTY
1	065620-020	CHASSIS WELDMENT X15	1
2	065690-010	YOKE WELDMENT R.H. X15	1
3	065691-010	YOKE WELDMENT L.H. X15	1
4	113051-000	STEERING CYLINDER ASSEMBLY	1
5	027931-072	BEARING	2
6	027931-059	BEARING	4
7	027931-022	BEARING	4
8	113050-000	DRIVE MOTOR ASSEMBLY	2
9	065743-005	DRIVE WHEEL	2
10	011273-006	NUT HEX 3/8-16 JAM	2
11	013315-010	RING, RETAINING "E"	2
12	063728-001	SLIDE BLOCK	4
13	011254-032	SCREW HHC 3/8-16 x 4	4
14	011782-010	THRUST WASHER 1/2 X 7/8 X 3/16 LG	2
15	026553-004	RVT POP 3/16 DIA. .25-.38 GRIP	8
16	011705-016	SCREW SET 3/8-16 x 1 HEX SOC	2
17	064754-000	SPACER LATCH	2

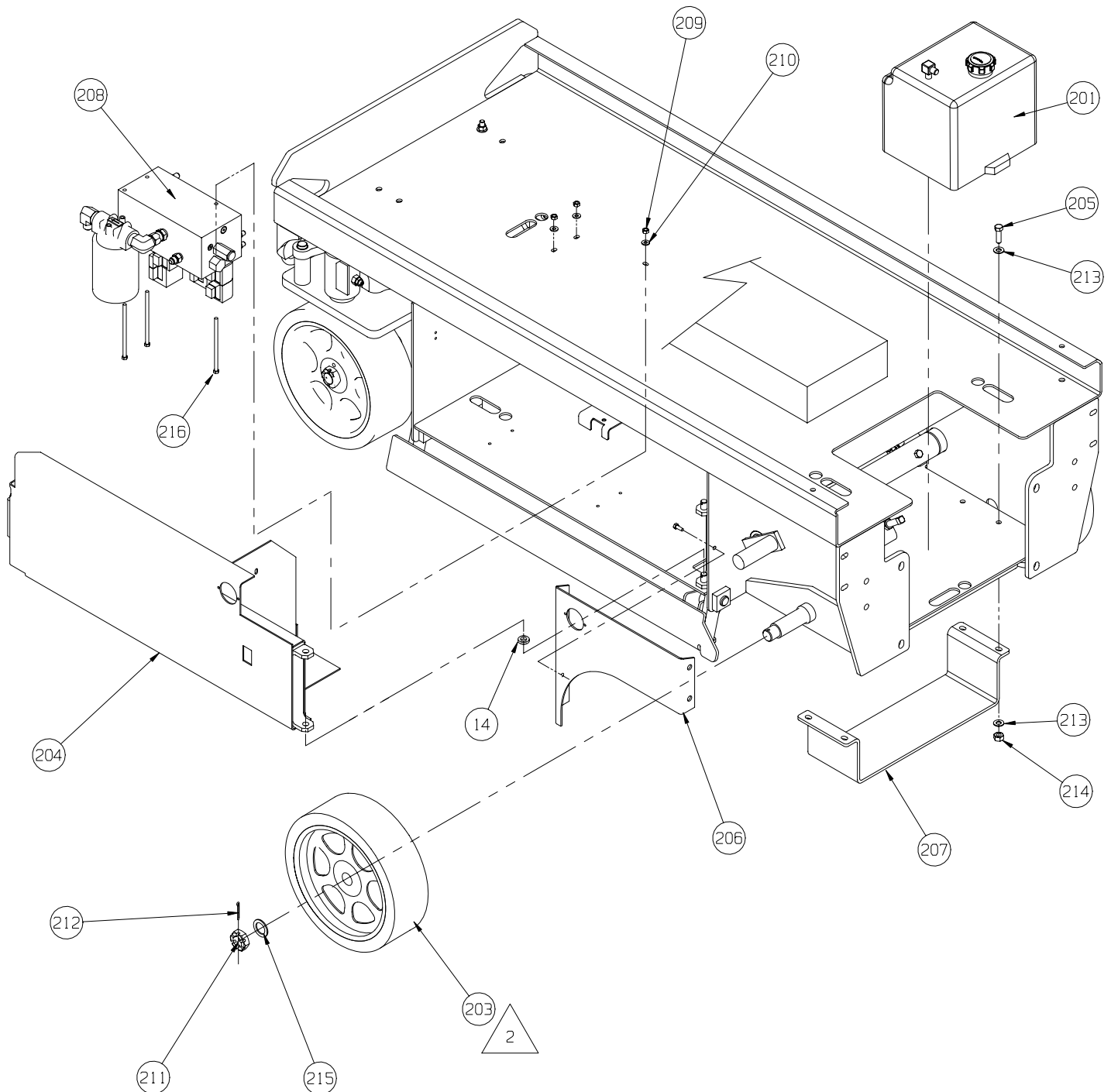
ITEM	PART	DESCRIPTION	QTY
18	065650-001	TRAY WELDMENT R.H. X15/19	1
19	010149-000	FUSE BLOCK	1
20	010148-001	FUSE 175 AMP	1
21	065733-000	THRUST PAD 1/4 UHMW	2
22	065800-000	WELDMENT, STEER PIN	2
23	065731-000	STEER LINK X15/19	2
24	065732-000	STEER GUIDE	2
25	011248-002	LOCK NUT 8-32	6
26	005299-000	LATCH TOGGLE	2
27	011708-006	SCREW MACH RD HD 8-32 x 3/4	6
28	011248-005	LOCK NUT 5/16-18	2
29	011240-005	WASHER FLAT STD 5/16	4
30	011256-026	SCREW HHC 1/2-13 x 3-1/4	8
31	011248-008	LOCK NUT 1/2-13	8
32	066807-001	ALARM DUAL TONE	1
33	010122-001	SOLENOID RELAY, MOTOR	1

Drawing #1 of 3

Drawing #2 of 3

ITEM	PART	DESCRIPTION	QTY
201	101152-001	HYDRAULIC TANK ASS'Y X15	1
203	065744-021	IDLER WHEEL ASSEMBLY	2
204	065657-002	TRAY WELDMENT L.H.	1
205	011254-010	SCREW HHC 3/8-16 X 1 1/4	8
206	065979-002	WHEEL COVER WELDMENT L.H.	1
207	065270-000	FORKLIFT POCKET	1
208	113052-000	VALVE BLOCK ASSEMBLY	1
209	011248-004	LOCK NUT 1/4-20	11

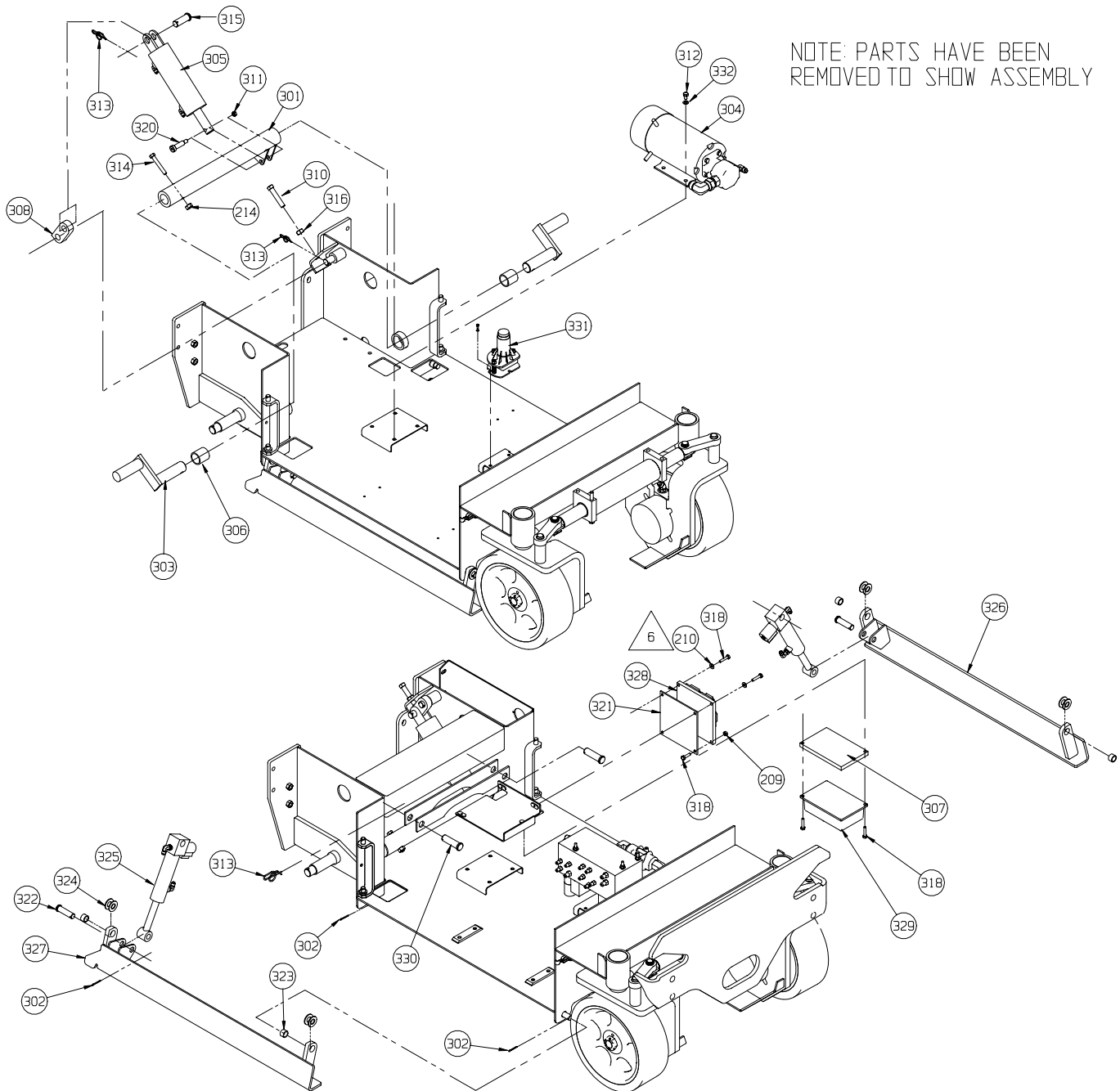
ITEM	PART	DESCRIPTION	QTY
210	011240-004	WASHER FLAT STD 1/4	9
211	015945-016	NUT SLOTTED HEX JAM 1-14 UNF	2
212	011754-012	COTTER PIN 5/32 x 1-1/2	4
213	011240-006	WASHER FLAT STD 3/8	20
214	011248-006	LOCK NUT 3/8-16	14
215	063329-008	WASHER, FLAT 1" I.D. 1 1/2" O.D.	2
216	011252-040	SCREW HHC 1/4-20 UNC X 5	3



Drawing #3 of 3

ITEM	PART	DESCRIPTION	QTY
301	065678-000	BRAKE PIVOT WELDMENT	1
302	011753-012	COTTER PIN 1/8 X 1 1/2	6
303	065685-000	BRAKE ACTUATOR WELDMENT	2
304	113055-000	POWER UNIT ASSEMBLY	1
305	113054-000	CYL. ASSEMBLY - BRAKE	1
306	027931-071	BEARING	2
307	065984-000	HEAT SINK	1
308	066322-000	CYLINDER LINK	1
310	066096-020	SCREW 1/2-13UNC SQ HD x 2 1/2	1
311	011246-005	LOCK NUT 5/16-18 THIN	1
312	011254-004	SCREW HHC 3/8-16 X 1/2	4
313	011757-010	COTTER RUE RING	4
314	011254-020	SCREW HHC 3/8-16 x 2-1/2	2
315	011848-041	CLEVIS PIN 3/4 x 2	1
316	011273-008	NUT 1/2-13 JAM HEX	1

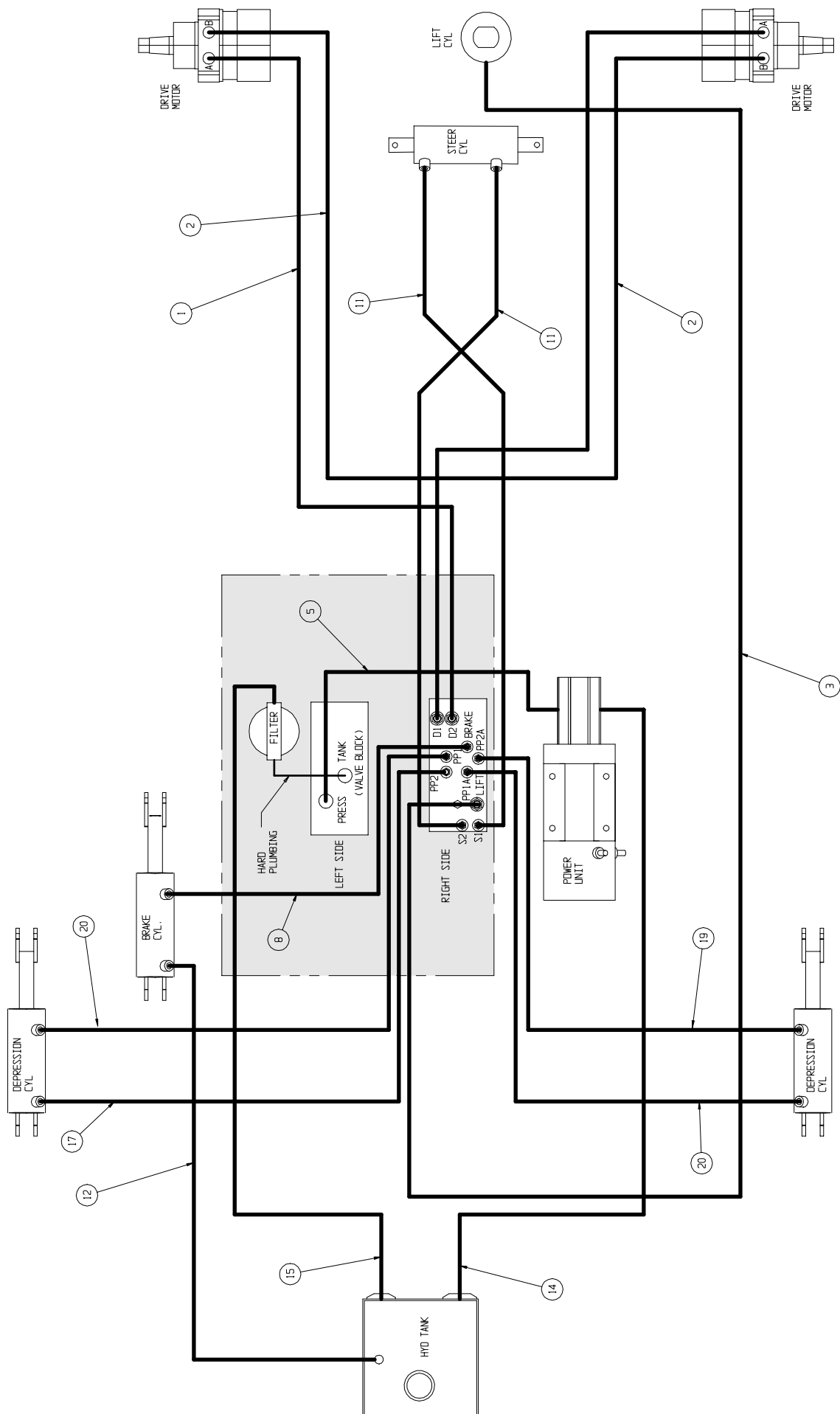
ITEM	PART	DESCRIPTION	QTY
318	012553-012	SCREW, SOCKET HD 1/4-20UNC X 1-1/2	2
320	063559-006	SHOULDER BOLT 3/8 x 2	1
321	065264-000	PLATE - CIRCUIT BOARD	1
322	011848-036	CLEVIS PIN 5/8 X 2 1/4	2
323	011780-040	BEARING 5/8 X 13/16 X 1/2 LG	4
324	014996-010	WASHER 5/8 SAE FLAT PLATED	8
325	113053-000	CYL. ASSY - DEPRESSION RAIL	2
326	065971-020	DEPRESSION RAIL WELDMENT L.H.	1
327	065971-021	DEPRESSION RAIL WELDMENT R.H.	1
328	065709-001	CIRCUIT BOARD	1
329	065708-001	MOTOR CONTROL	1
330	011848-019	CLEVIS PIN 3/4 X 2 1/2	2
331	(SEE FINAL)	LEVEL SENSOR	REF
332	011240-006	3/8 FLAT WASHER	4



Hose Kit Installation

065611-021

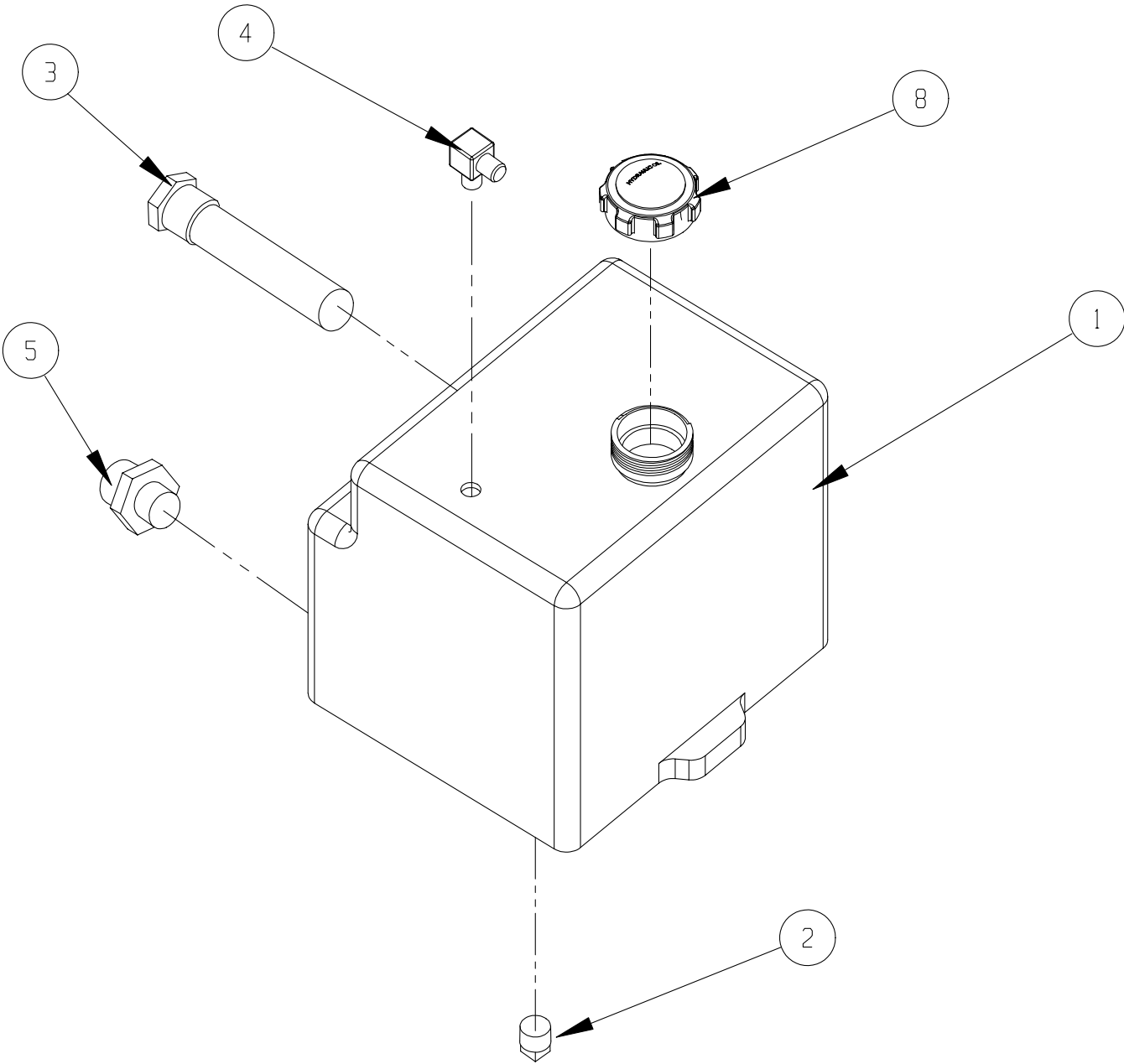
ITEM	PART	DESCRIPTION	QTY	ITEM	PART	DESCRIPTION	QTY
1	101244-037	HOSE ASSY 3/8 X 37 (6FJX-6FJX)	1	14	061789-017	HOSE ASSY 3/4 X 17 1/2 (12FJX-12MP)	1
2	101243-034	HOSE ASSY 3/8 X 34 (6FJX-6FJX X 90)	2	15	064156-021	HOSE ASSY 1/2 x 42 (8FJX-8FJX)	1
3	068965-150	HOSE ASSY 3/8 X 150 (6FJX-6FJX X 90)	1	17	107095-038	HOSE ASSY 1/4 X 38 (4FJX-4FJX90)	1
5	107096-013	HOSE ASSY 3/8 X 13 (6FJX-6FJX X 90)	1	19	107095-032	HOSE ASSY 1/4 X 32	1
8	107095-054	HOSE ASSY 1/4 X 54 (4FJX-4FJX X 90)	1	19	107095-032	(4FJX-4FJX X 90)	1
11	107095-031	HOSE ASSY 1/4 X 31 (4FJX-4FJX X 90)	2	20	107095-037	HOSE ASSY 1/4 X 37	2
12	061351-045	HOSE ASSY 1/8 X 13 (4FJX-4FJX)	1	20	107095-037	(4FJX-4FJX X 90)	2



Hydraulic Tank Assembly

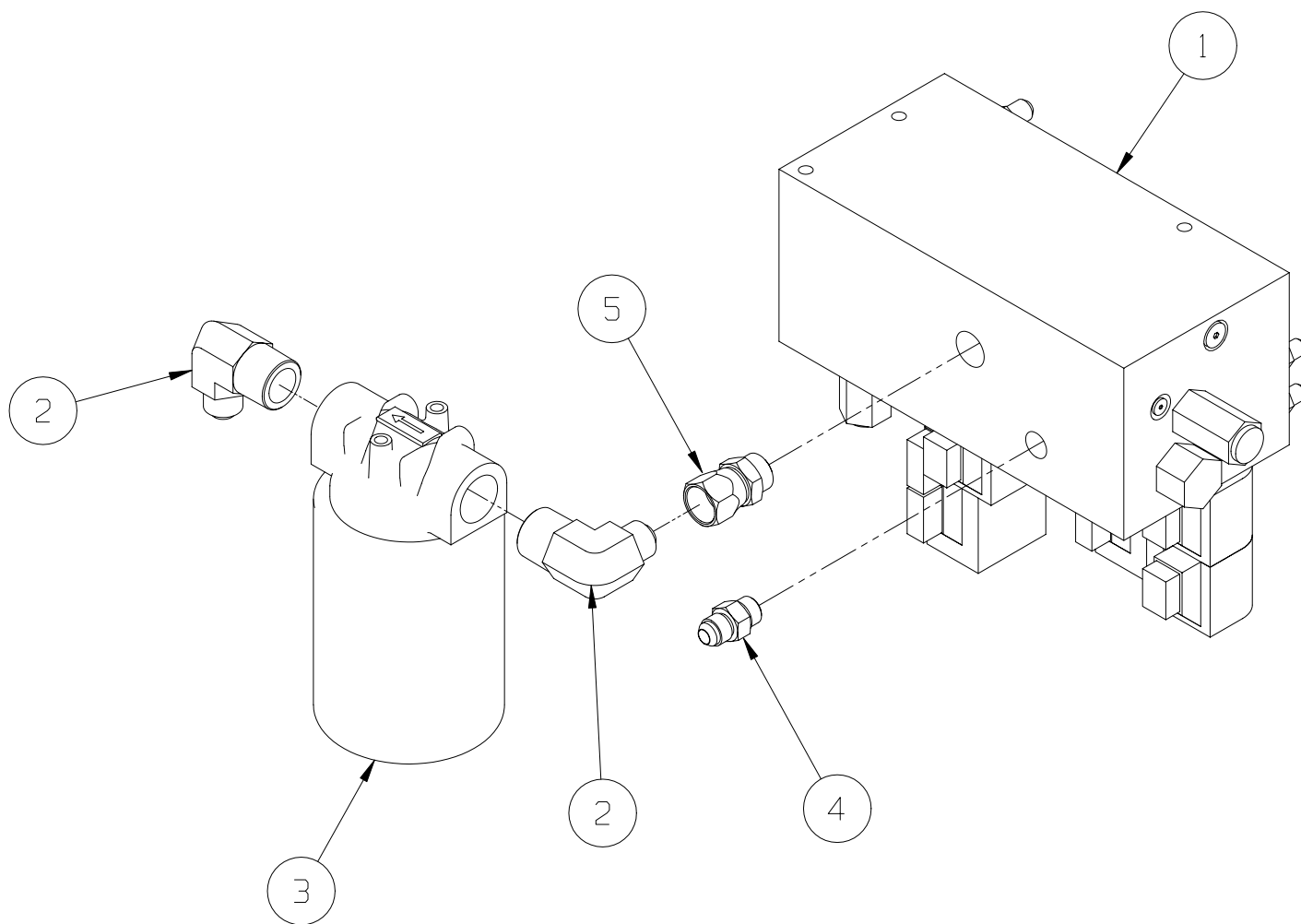
101152-001

ITEM	PART	DESCRIPTION	QTY
1	101056-001	TANK, HYDRAULIC	1
2	021305-006	PLUG, MAGNETIC	1
3	061818-000	STRAINER, SUCTION	1
4	011940-006	FITTING ELBOW, 4MP-6MJ	1
5	011939-006	FITTING, 8MP-8MJ	1
8	068982-001	HYDRAULIC TANK LID	1



Valve Block Assembly 113052-000

ITEM	PART	DESCRIPTION	QTY
1	101120-122	VALVE BLOCK ASSY.	1
2	011940-018	FITTING, 8MJ-12MP 90 DEG	2
3	005154-001	FILTER	1
4	011941-005	FITTING, 6MB-6MJ	1
5	064170-005	FITTING, 8MB-8FJX	1

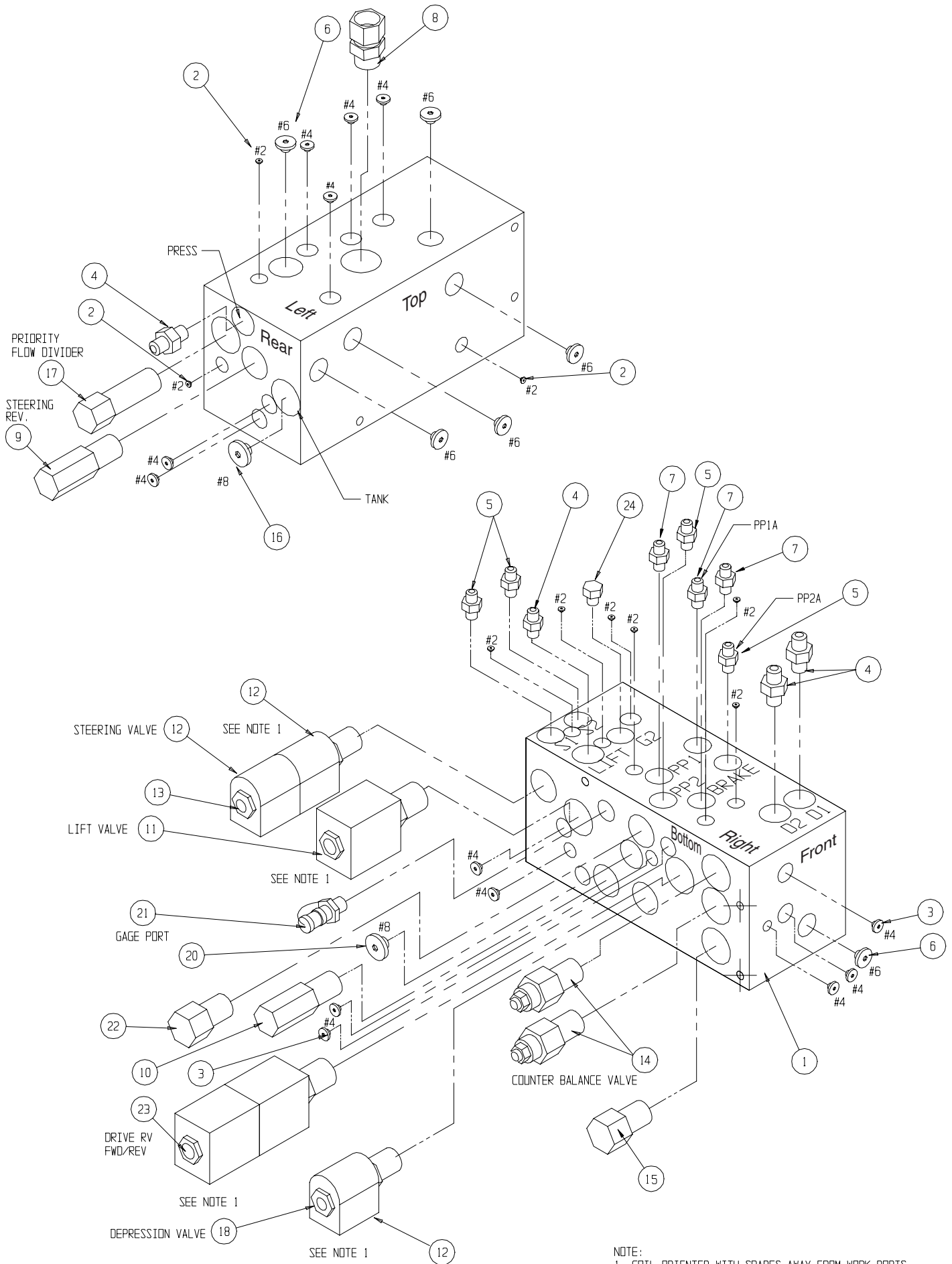


Valve Block

101120-122

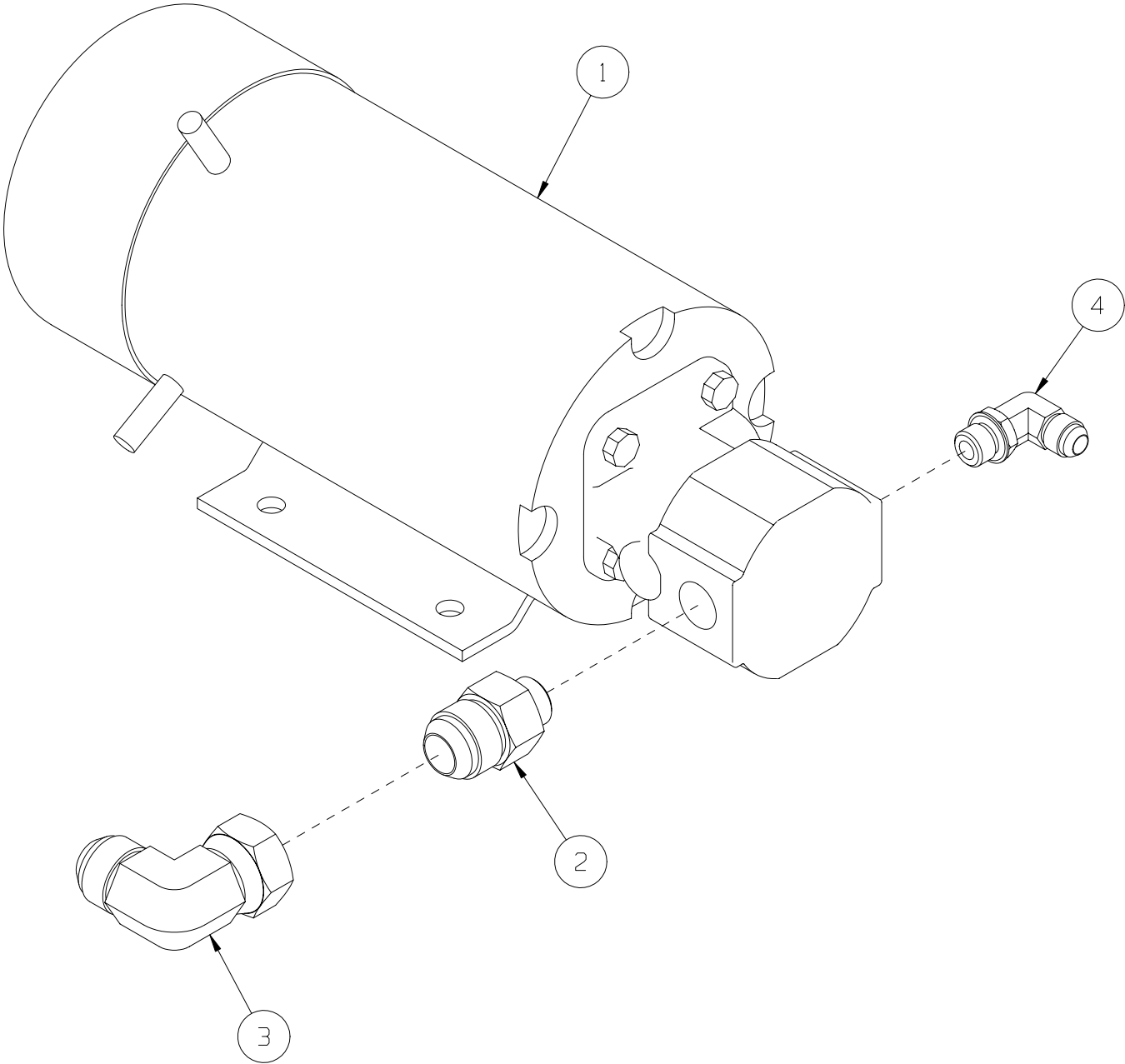
ITEM	PART	DESCRIPTION	QTY.
1	100020-040	CONTROL VALVE BLOCK	1
2	012004-002	FITTING #2 PLUG	9
3	012004-004	FITTING #4 PLUG	15
4	011941-005	FITTING STRAIGHT 6MB - 6MJ	4
5	011941-001	FITTING STR 4MBH - 4MJ	4
6	012004-006	FITTING PLUG #6	6
7	031006-004	FITTING STR 4MB-4MJ W/.031 ORIFICE	3
8	064170-005	FITTING 8MB-8FJX	1
9	060390-017	RELIEF VALVE, STEERING	1
10	060390-025	RELIEF VALVE, MAIN	1
11	063923-006	2 POS - 4 WAY SOLENOID W/ COIL	1
12	101120-033	COIL	2

ITEM	PART	DESCRIPTION	QTY.
13	064845-000	3 POS - 4 WAY SOLENOID W/ COILS	1
14	101120-035	COUNTERBALANCE VALVE	2
15	060390-025	VALVE RELIEF	1
16	020021-008	FITTING PLUG #8	1
17	064843-000	FLOW DIVIDER VALVE	1
18	063973-001	2 POS POPPET VALVE W/ COIL	1
19	101120-033	COIL	1
20	012004-008	FITTING, #8 PLUG	1
21	063965-001	FITTING GAUGE	1
22	064841-000	CHECK VALVE	1
23	063923-021	3 POS - 4 WAY SOLENOID W/ COILS	1
24	020021-004	FITTING, HEX PLUG #4	1



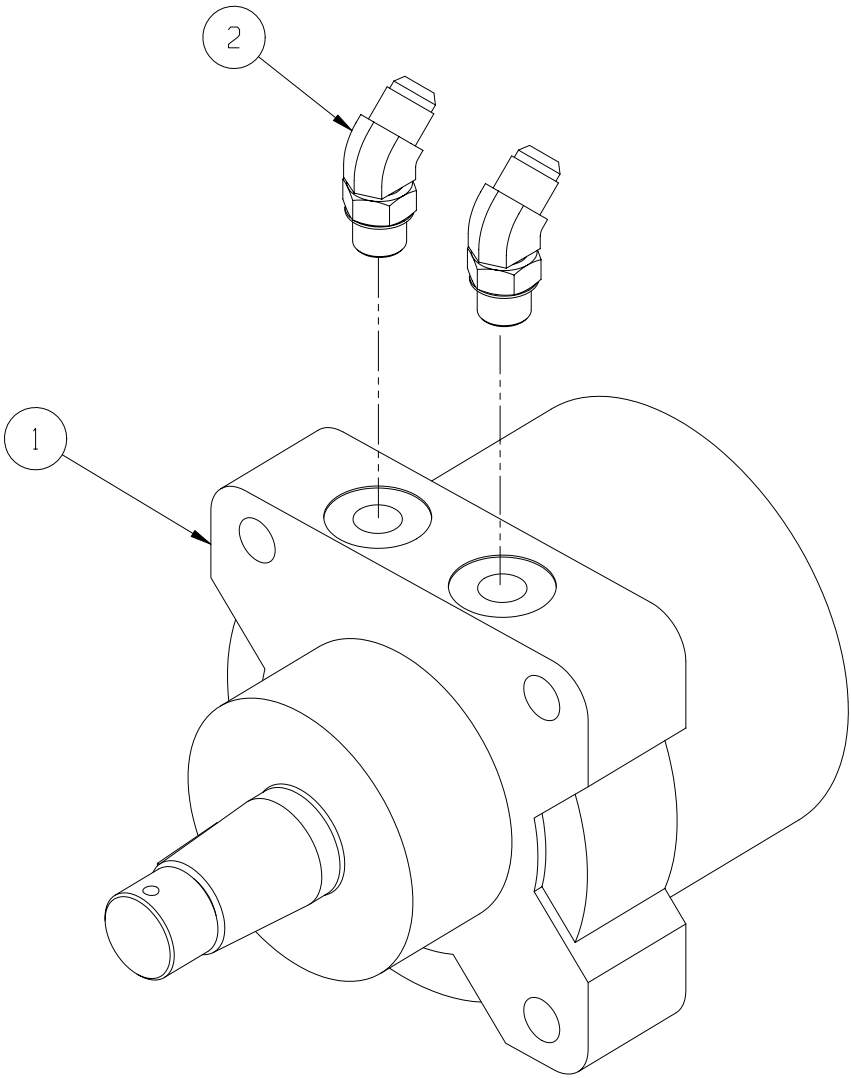
Power Unit Assembly
113055-000

ITEM	PART	DESCRIPTION	QTY
1	101230-000	POWER UNIT	1
2	011941-012	FITTING, 8MB-12MJ	1
3	011937-007	FITTING, 12FJX-12MJ 90	1
4	011934-004	FITTING, 6MB-6MJ 90	1



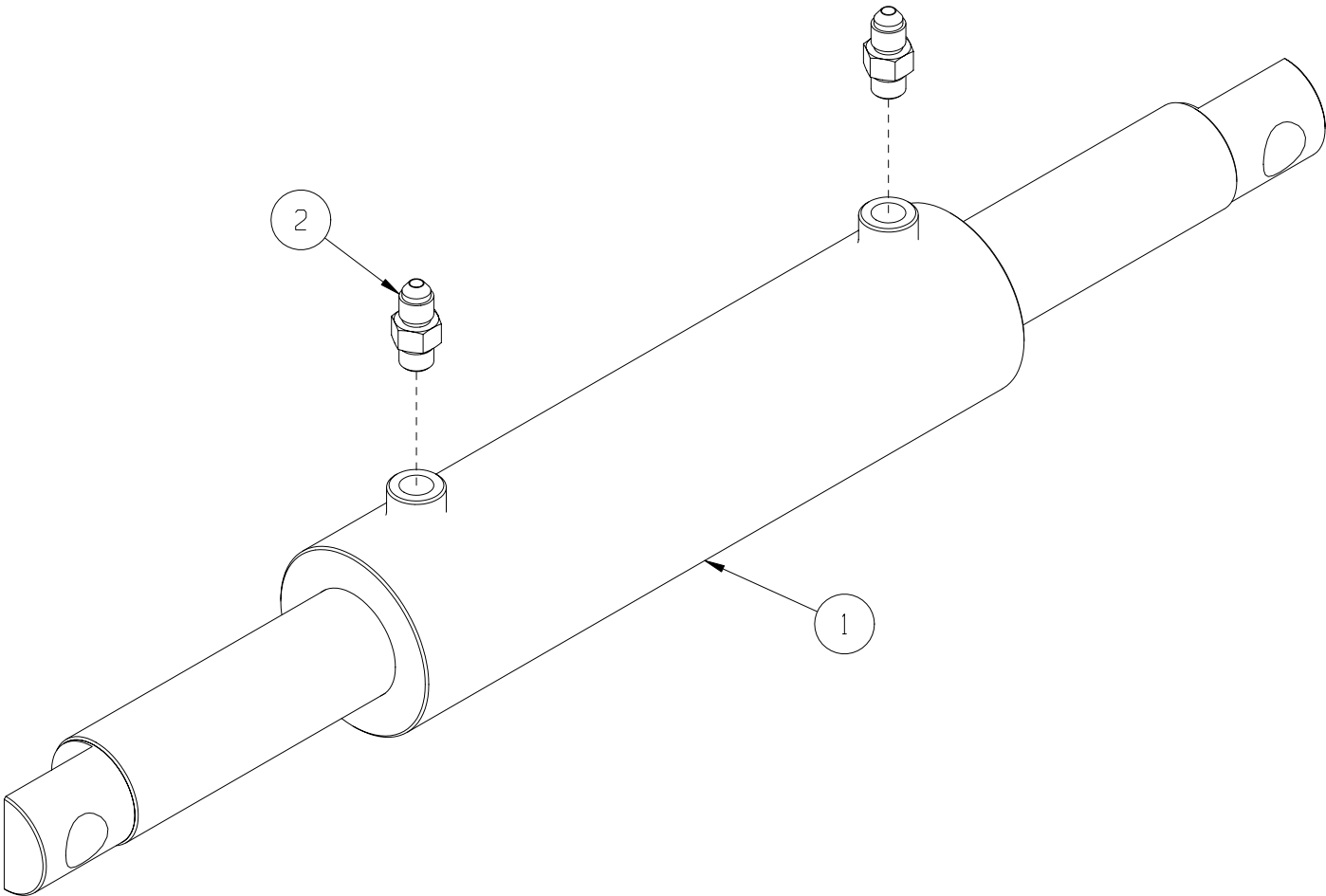
Drive Motor Assembly
113050-000

ITEM	PART	DESCRIPTION	QTY
1	101125-000	MOTOR - DRIVE	1
2	011935-003	FITTING, 6MB-6MJ45	2



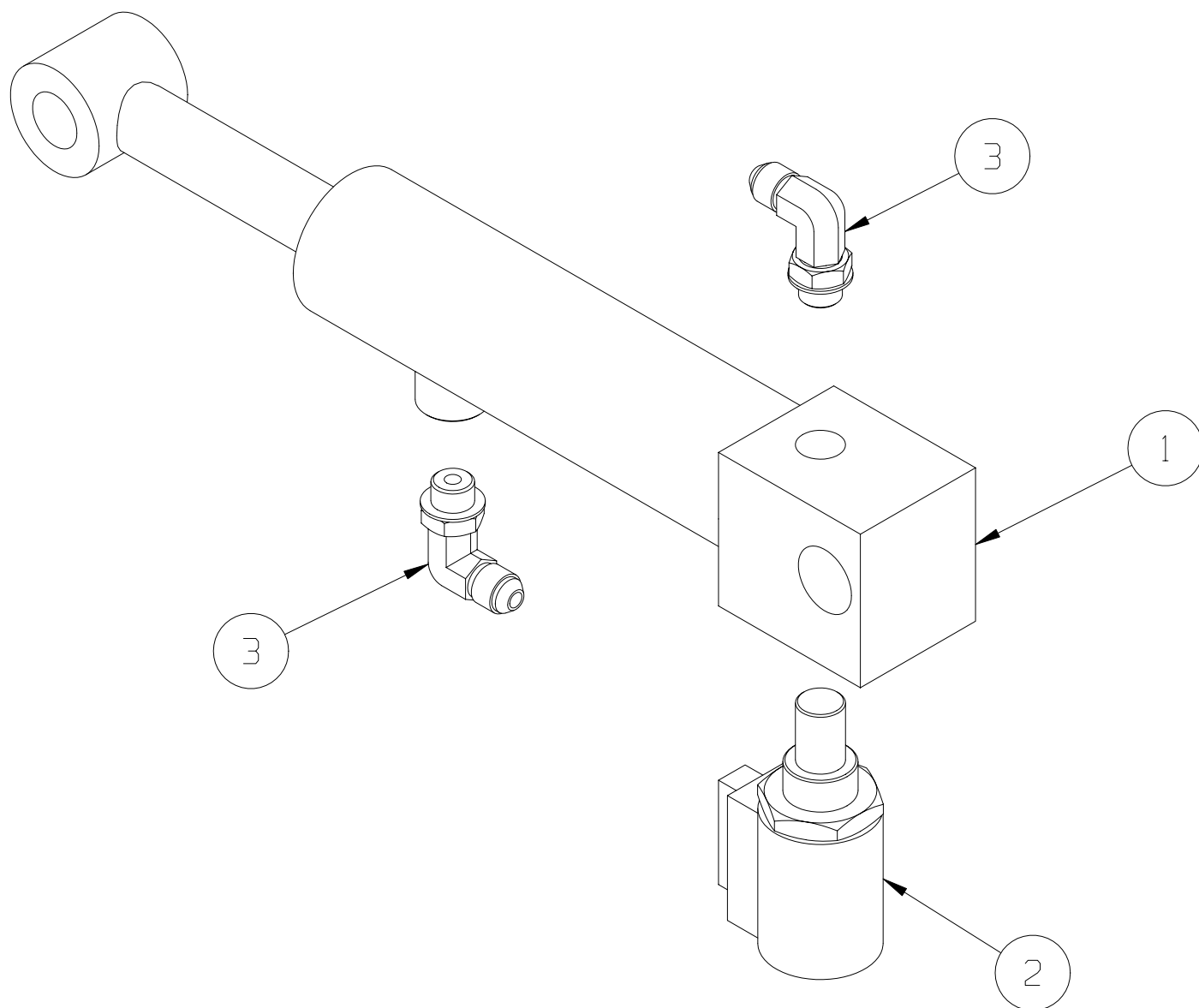
Steering Cylinder Assembly
113051-000

ITEM	PART	DESCRIPTION	QTY
1	065371-000	STEERING CYLINDER	1
*	065371-011	SEAL KIT	*
2	011941-001	FITTING, 4MB-4MJ	2



Depression Cylinder Assembly 113053-000

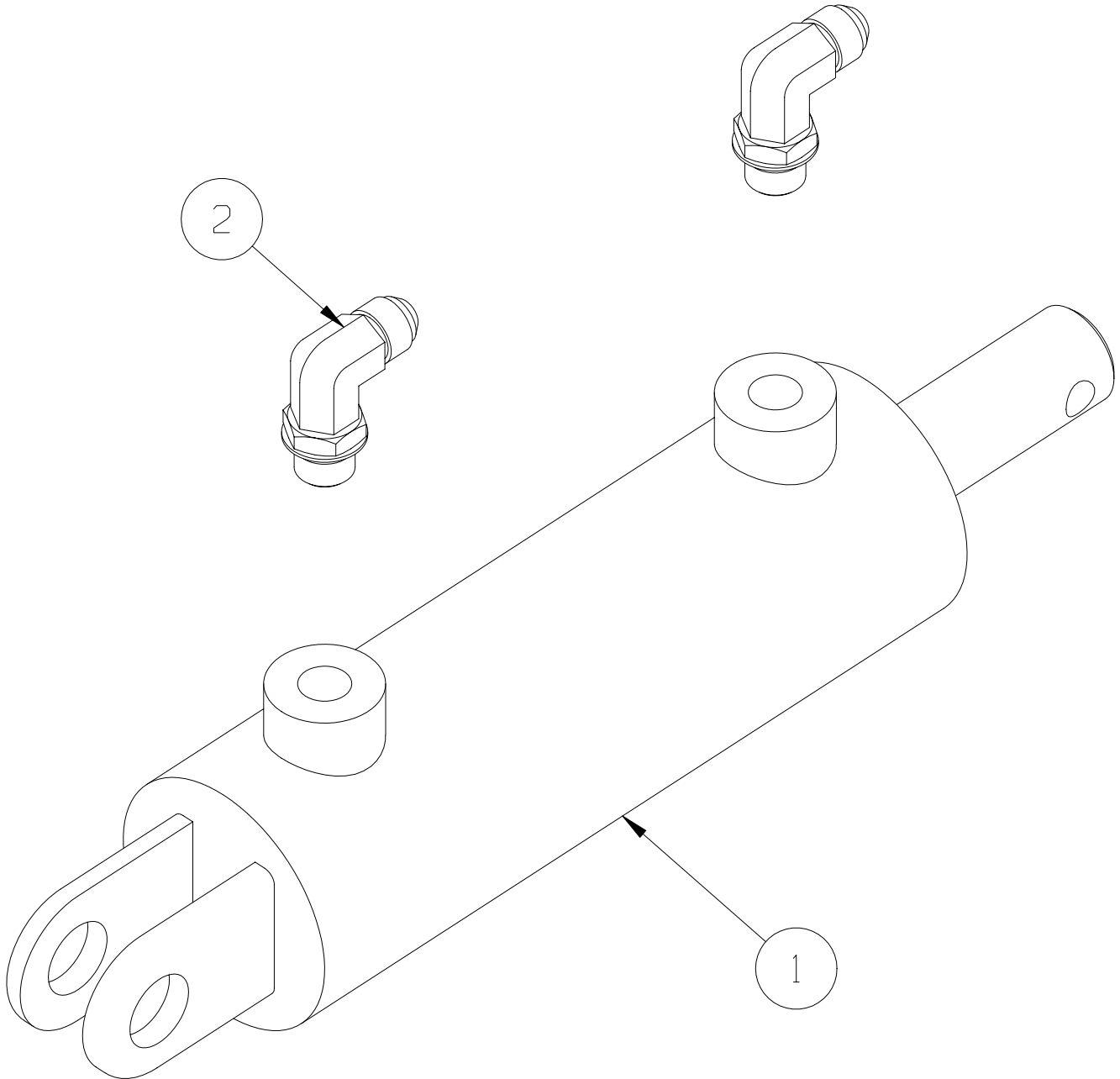
ITEM	PART	DESCRIPTION	QTY
1	065970-001	HYDRAULIC CYLINDER	1
*	065970-001	SEAL KIT	*
2	063973-001	VALVE, SOLENOID	1
3	011934-001	FITTING, 4MB-4MJ90	2



Brake Cylinder Assembly

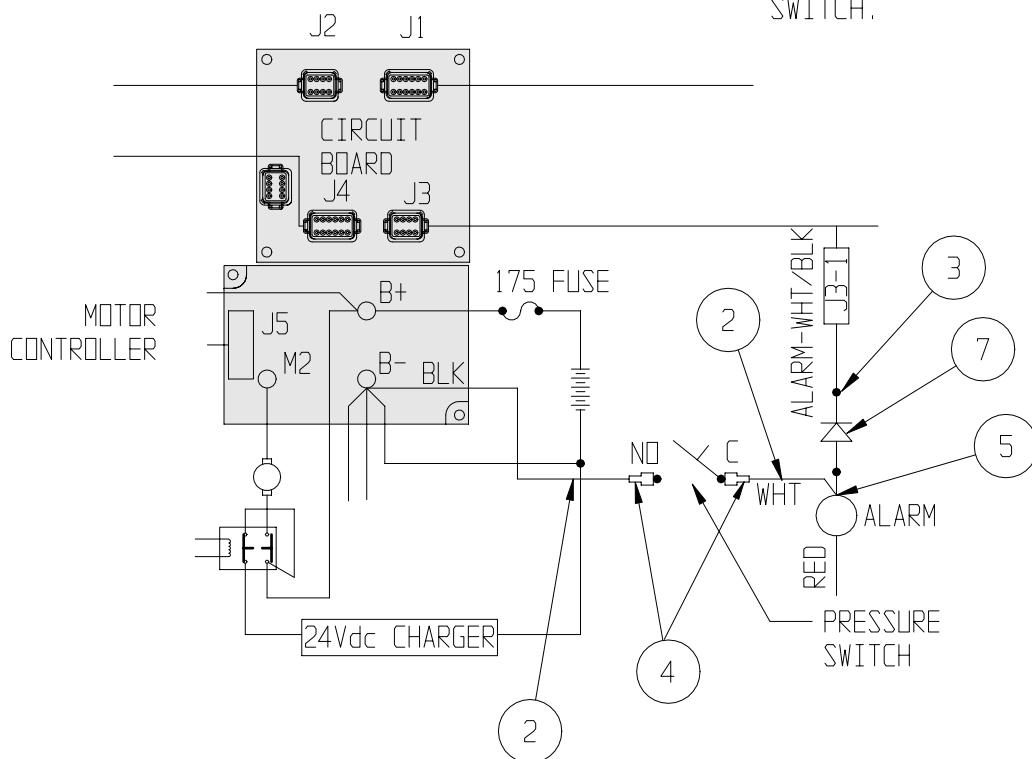
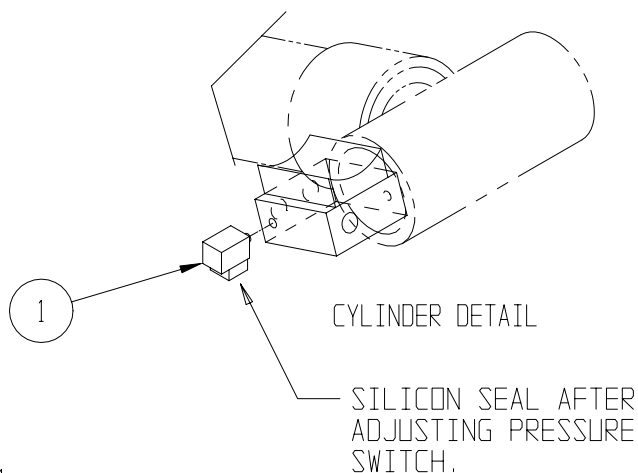
113054-000

ITEM	PART	DESCRIPTION	QTY
1	066604-001	CYLINDER	1
*	066604-011	SEAL KIT	*
2	011934-003	FITTING, 6MB-4MJ90	2



ITEM	PART	DESCRIPTION	QTY
4	029931-003	PUSH TERM./F .25 16-14	2
5	029610-002	FORK TERM. #8 16-14	3
6	029451-099	WIRE 16 AWG WHT	0.8 FT.
7	029825-002	DIODE	1

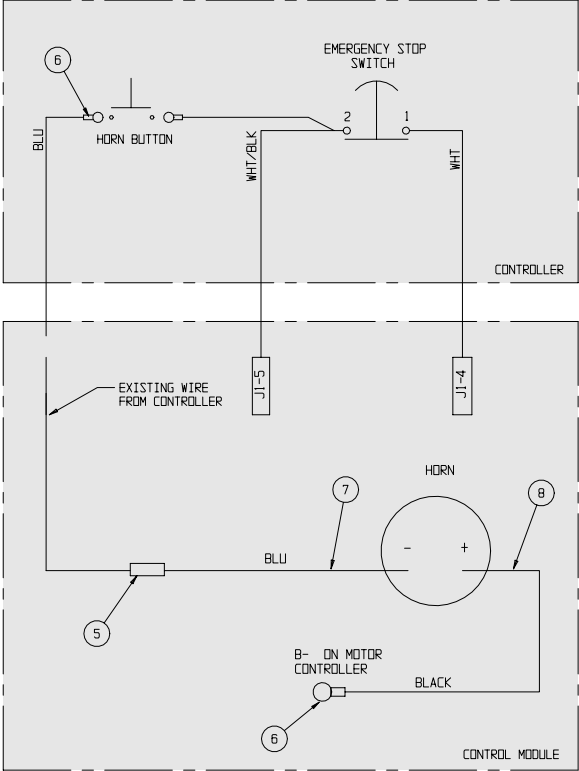
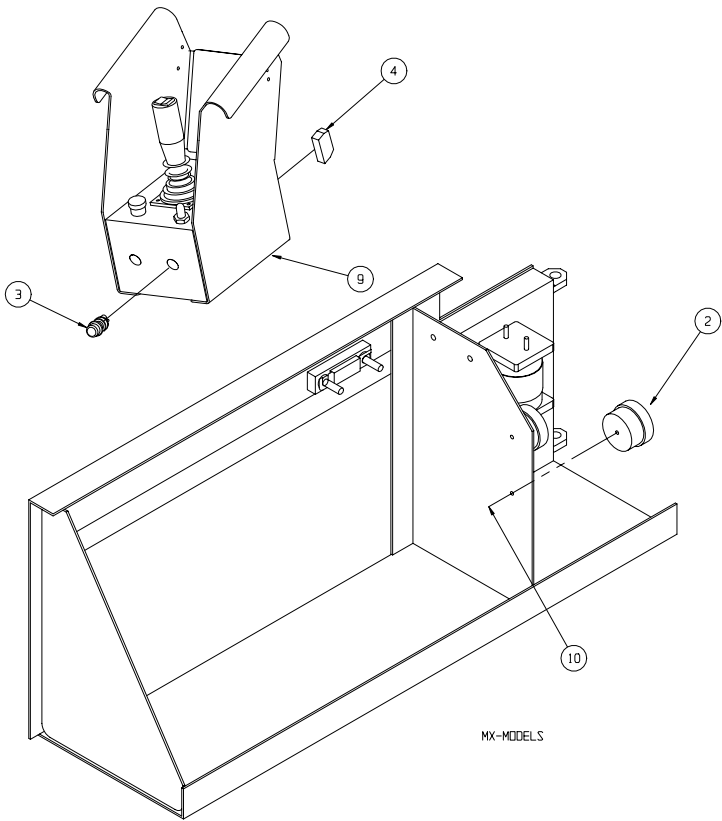
1. SET PRESSURE SWITCH TO SOUND ALARM WHEN LIFT-OFF AT RATED LOAD.
2. SET LIFT RELIEF TO LIFT RATED LOAD PLUS 38 LBS.



Horn Assembly
066614-020

ITEM	PART	DESCRIPTION	QTY
1	-	CONTROL MODULE ASSEMBLY	REF
2	066807-003	HORN, 24 VDC	1
3	066805-018	SWITCH, PUSH BUTTON 6E	1
4	066805-010	CONTACT BLOCK NO	1
5	029620-002	CONNECTOR, BUTT 16-14 GA	1

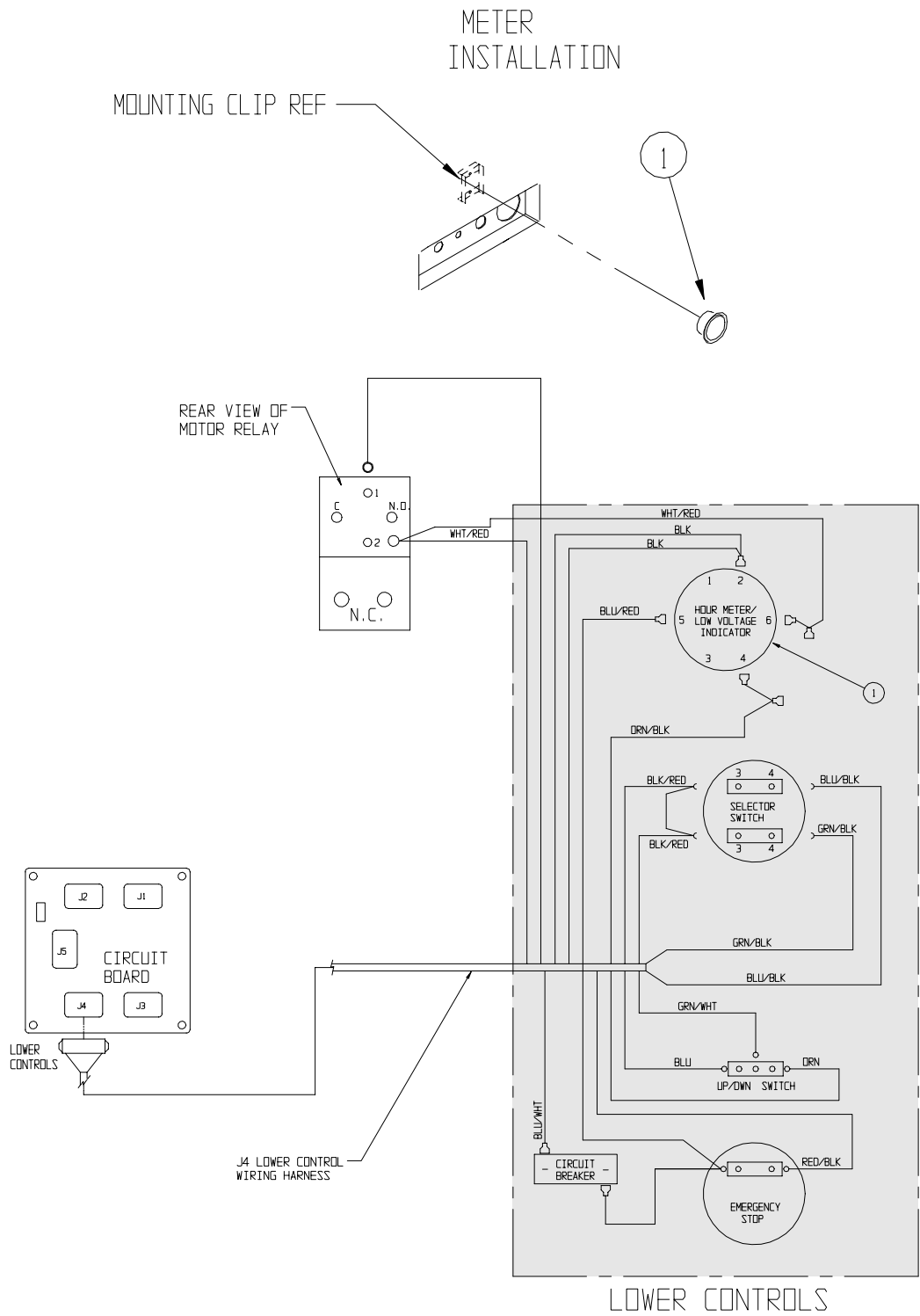
ITEM	PART	DESCRIPTION	QTY
6	029601-013	CONNECTOR, RING TERMINAL	4
7	029453-099	WIRE, 16 AWG BLUE	4 FT
8	029452-099	WIRE, 16 AWG BLACK	4 FT
9	-	CONTROLLER ASSY	REF
10	011252-006	SCREW HHC 1/4-20 X 3/4	1



Hour Meter/Low Voltage Indicator

066613-020

ITEM	PART	DESCRIPTION	QTY.
1	029959-000	HR/LOW VOLTAGE IND.	1



Removable Controller Option

061898-001

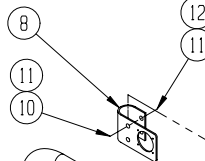
ITEM	PART	DESCRIPTION	QTY
1	028800-003	PLUG CONNECTOR (FEMALE)	1
2	028800-004	PIN CONTACT (MALE)	15
3	028800-015	PLUG SEALING	16
4	028800-016	RECEPTACLE CONNECTOR W/ CLAMP (MALE)	1
5	028800-005	SOCKET CONTACT (FEMALE)	15

ITEM	PART	DESCRIPTION	QTY
8	030719-001	110 VAC BRACKET	1
9	030719-002	AIR BRACKET WELDMENT	1
10	011254-016	SCREW HHC GRD5 3/8-16UNC X 2	4
11	011240-006	WASHER 3/8 STD FLAT	4
12	011248-006	NUT HEX ESNA 3/8-16	2

NOTES

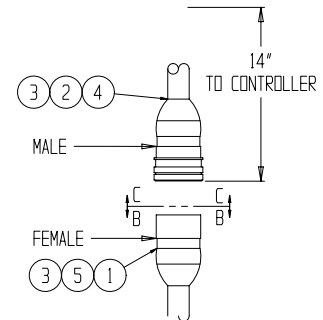
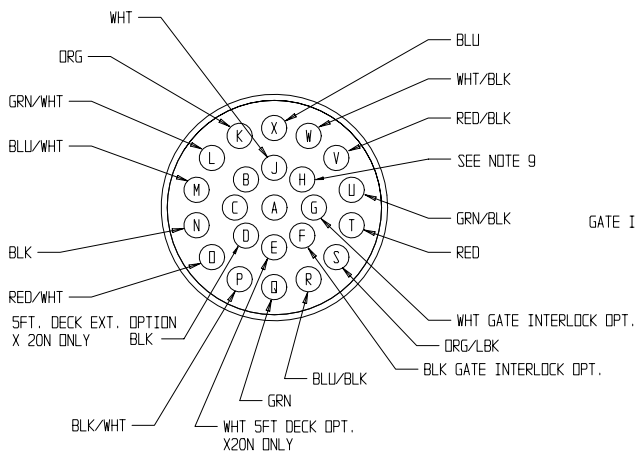
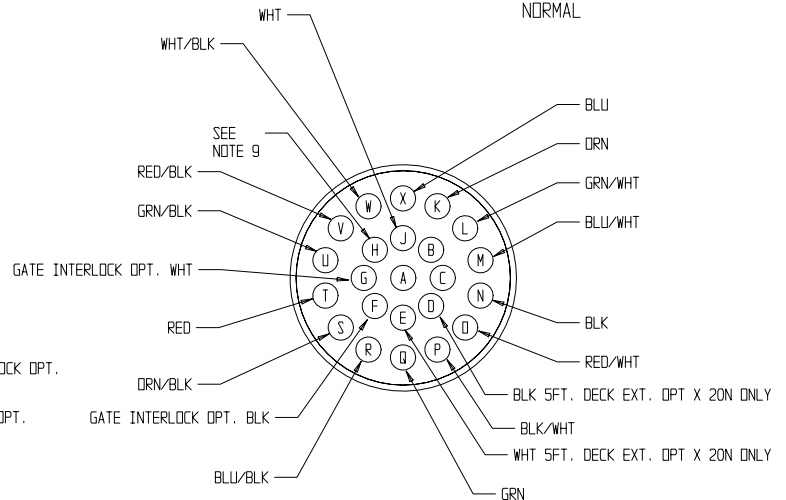
1. CUT OFF CONTROL CABLE 14 INCHES BELOW STRAIN RELIEF ON CONTROLLER.
2. CUT OUTER CABEL COVER OF LINKAGE CABEL BACK APPROXIMATELY 1-1/2 INCH AND STRIP APPROXIMATELY 1/4 INCH OF EACH END.
3. CRIMP SOCKETS (28800-005) ONTO WIRE ENDS AND INSERT INTO CONNECTOR (28800-016). REF. VIEW B-B.
4. CUT OUTER CABEL COVER OF CONTROLLER END BACK APPROXIMATELY 1-1/2 INCH AND STRIP APPROXIMATELY 1/4 INCH OF EACH END.
5. SLIDE BOOT AND CLAMP ONTO CABLE.
6. CRIMP PINS (28800-004) ONTO WIRE ENDS AND INSERT INTO CONNECTOR (28800-003). REF. VIEW C-C.
7. CLAMP BOOT TO CONNECTOR.
8. CONNECT CONTROLLER AND TEST MACHINE FOR PROPER FUNCTION.
9. USE TERMINAL " H " FOR HORN OPTION OR IF AUX WIRE IS REQUIRED.
10. ITEM #8 THRU 12 REQD ONLY FOR 110 VAC AND/OR AIR TO PLATFORM.

110 VAC TO PLATFORM



AIR TO PLATFORM

SEE NOTE #10

ROUTE
SAME AS
NORMALVIEW B-B
MODULE ENDVIEW C-C
CONTROLLER END

NOTES:

Label Installation - MX15

065612-034

ITEM	PART	DESCRIPTION	QTY
1	061683-004	LABEL UPRIGHT	2
2	061684-022	LABEL MX 15	2
3	061683-014	LABEL UPRIGHT	2
4	067195-001	LABEL INSTRUCTIONS	1
5	100102-900	LABEL NOT INSULATED	1
6	010076-000	MANUAL CASE	1
8	011248-004	LOCKNUT 1/4-20UNC HEX	4
9	011252-006	SCREW 1/4-20UNC HHC X 3/4	4
10	011240-004	WASHER 1/4 STD FLAT	4
11	066559-900	LABEL CONTROLS	1
12	066551-950	LABEL MAX LOAD DECK EXT	1
13	101210-000	LABEL WARNING BATTERIES	2
14	101208-000	LABEL WARNING PINCH POINT	2
15	030768-001	LABEL CE	1
16	107051-900	LABEL, BATTERY DISCONNECT	1
17	066556-900	LABEL CAUTION	1
18	066557-952	LABEL MAX LOAD PLATFORM	2
19	005223-906	LABEL EMERG. LOWERING	1
20	101222-904	LABEL CONTROLLER	1
21	064936-099	TAPE REFLECTIVE	7.08 FT.
22	066522-900	LABEL BATTERY CHARGER	1
23	014222-903	LABEL FORK-LIFT HERE	5
24	101208-001	LABEL WARNING	4
25	063255-901	LABEL SCISSOR BRACE	1
26	010076-901	LABEL INST.	1
28	068635-001	LABEL HARNESS HARDPOINT	1
29	061205-003	NAME PLATE	1
30	065368-000	TACK	4
31	064444-000	LABEL USA	4
32	060830-003	SAFETY WALK 6 X 21	1
33	060830-002	SAFETY WALK 8 X 36	3
34	060830-001	SAFETY WALK 4 X 20	3
35	062562-951	LABEL DANGER	2
36	107053-000	LABEL HORN	1
39	067195-201	LABEL INSTRUCTIONS (GERMAN)	1
40	067195-301	LABEL INSTRUCTIONS (FRENCH)	1

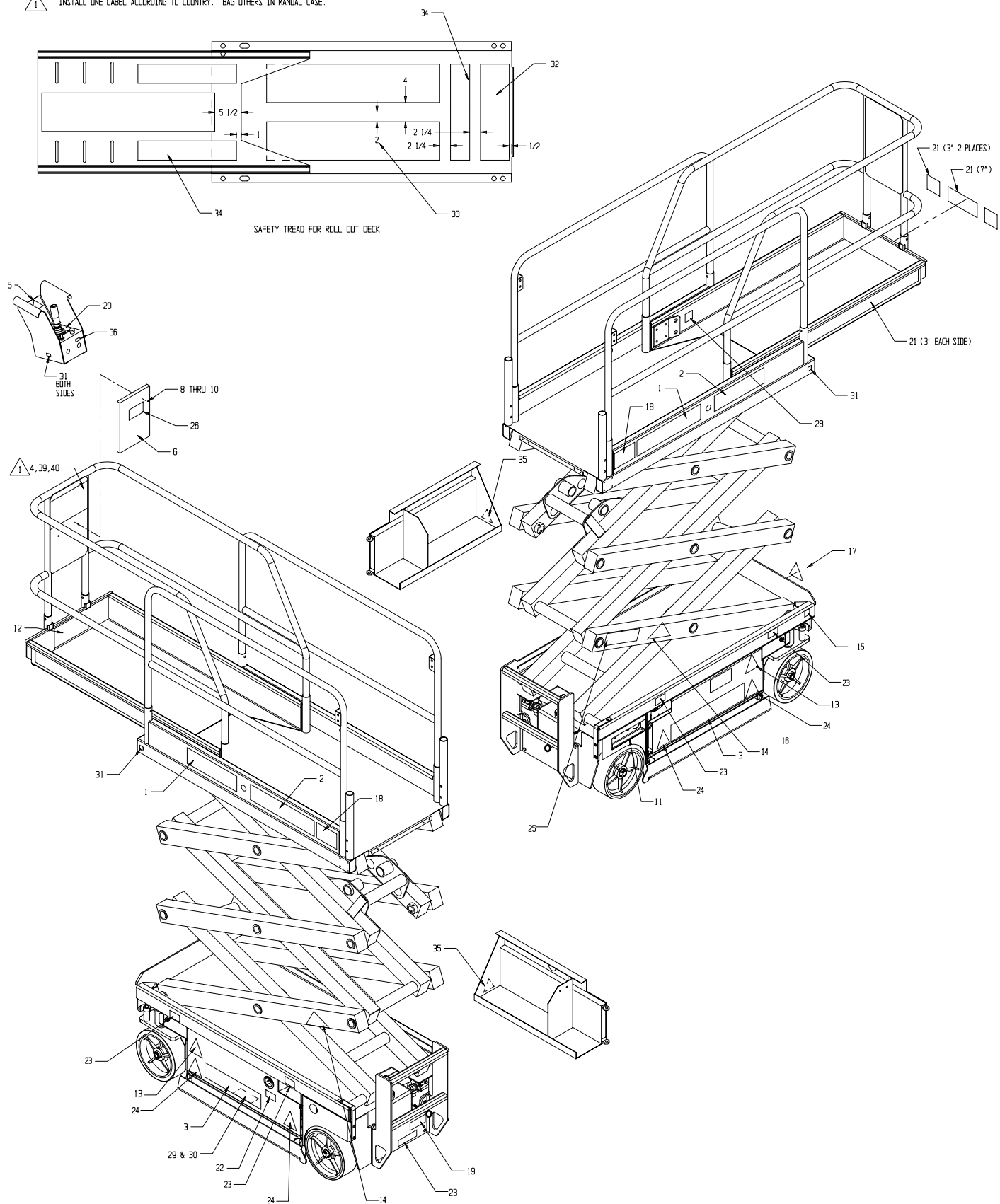
Label Installation - MX19

065712-034

ITEM	PART	DESCRIPTION	QTY
1	061683-004	LABEL UPRIGHT	2
2	061684-023	LABEL MX 19	2
3	061683-014	LABEL UPRIGHT	2
4	067195-001	LABEL INSTRUCTIONS	1
5	100102-900	LABEL NOT INSULATED	1
6	010076-000	MANUAL CASE	1
8	011248-004	LOCKNUT 1/4-20UNC HEX	4
9	011252-006	SCREW 1/4-20UNC HHC X 3/4	4
10	011240-004	WASHER 1/4 STD FLAT	4
11	066559-900	LABEL CONTROLS	1
12	066551-950	LABEL MAX LOAD DECK EXT	1
13	101210-000	LABEL WARNING BATTERIES	2
14	101208-000	LABEL WARNING PINCH POINT	2
15	030768-001	LABEL CE	1
16	107051-900	LABEL BATTERY DISCONNECT	1
17	066556-900	LABEL CAUTION	1
18	066557-951	LABEL MAX LOAD PLATFORM	2
19	005223-906	LABEL EMERG. LOWERING	1
20	101222-904	LABEL CONTROLLER	1
21	064936-099	TAPE REFLECTIVE	7.08 FT.
22	066522-900	LABEL BATTERY CHARGER	1
23	014222-903	LABEL FORK-LIFT HERE	5
24	101208-001	LABEL WARNING	4
25	063255-901	LABEL SCISSOR BRACE	1
26	010076-901	LABEL INST.	1
28	068635-001	LABEL HARNESS HARDPOINT	1
29	061205-003	NAME PLATE	1
30	065368-000	TACK	4
31	064444-000	LABEL USA	4
32	060830-003	SAFETY WALK 6 X 21	1
33	060830-002	SAFETY WALK 8 X 36	3
34	060830-001	SAFETY WALK 4 X 20	3
35	062562-951	LABEL DANGER	2
36	107053-000	LABEL HORN	1
39	067195-201	LABEL INSTRUCTIONS (GERMAN)	1
40	067195-301	LABEL INSTRUCTIONS (FRENCH)	1

NOTES:

1. INSTALL ONE LABEL ACCORDING TO COUNTRY. BAG OTHERS IN MANUAL CASE.



NOTES:

UpRight

Call Toll Free in U.S.A.

1-800-926-LIFT

UpRight, Inc.

801 South Pine Street
Madera, California 93637

TEL: 559-662-3900

FAX: 559-673-6184

PARTS: 1-888-UR-PARTS

PARTS FAX: 1-800-669-9884

UpRight

Call Toll Free in U.S.A.

1-800-926-LIFT

P/N 060546-026

06-02

UpRight

Unit S1, Park West Industrial Park

Friel Avenue

Nangor Road

Dublin 12, Ireland

TEL: +353 1 620 9300

FAX: +353 1 620 9301