

Parts Manual

TM12 Work Platform

European Specifications

Serial Numbers 6919 - Current

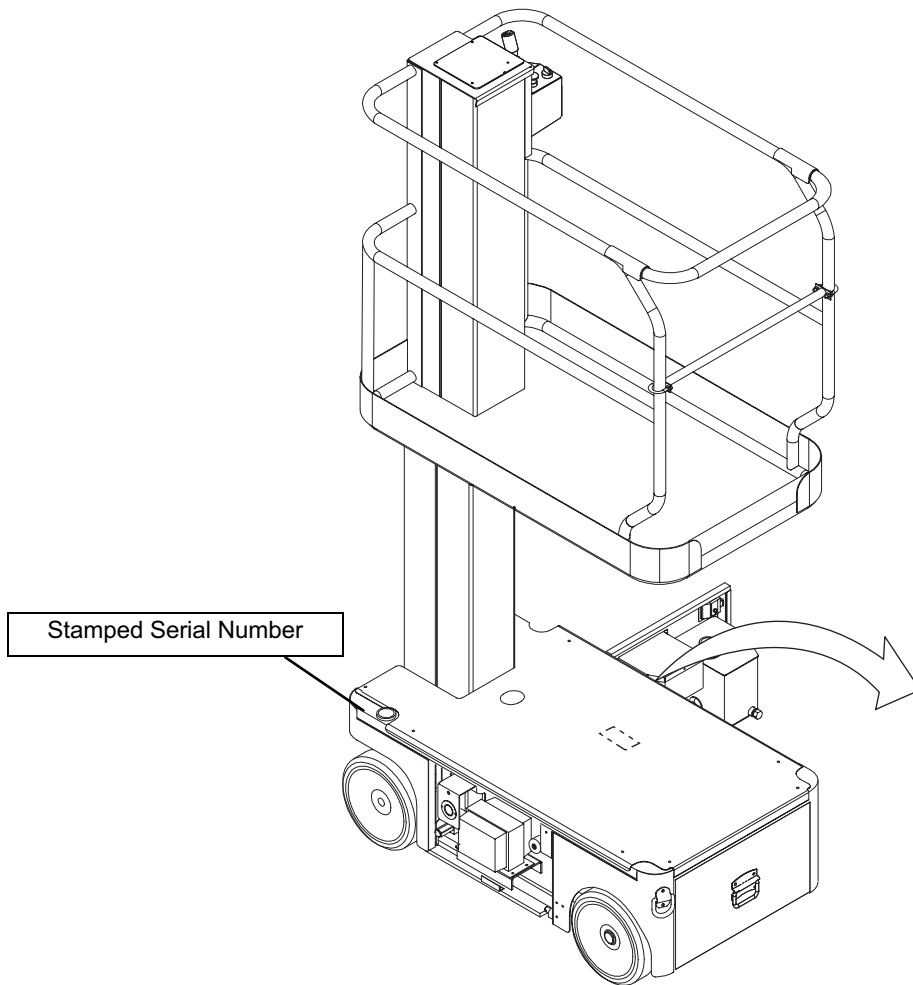
Publication Number: 107097-022R1

UpRight

TM 12

Serial Numbers 6919 – Current

When contacting UpRight for service or parts information, be sure to include the MODEL and SERIAL NUMBERS from the equipment nameplate. Should the nameplate be missing, the SERIAL NUMBER is also stamped on top of the chassis above the front axle pivot.



CE		UpRight Inc.	
1775 PARK ST. SELMA CALIFORNIA 93662 USA			
Model _____		Serial number: _____	
Machine weight _____ kg		Mfg. date: _____	
Maximum wheel load: _____			
Maximum allowable incline of machine when elevated: _____ deg.			
Occupants and equipment must not exceed the rated maximum load: _____ kg Maximum platform occupants: _____			
Maximum allowable side force on platform: _____ N			
Maximum platform height: _____ m			
Maximum platform reach: _____ m			
Maximum allowable wind speed: _____ m/s=Beaufort scale _____			
Maximum hydraulic system pressure: _____ bar			
Maximum system voltage: _____ Vdc			
This machine is manufactured to comply with Machinery directive 89-392/CEE			
CAUTION: CONSULT OPERATOR'S MANUAL BEFORE USE.			
061205-003			

UpRight, Inc.

801 South Pine Street
Madera, California 93637

TEL: 559-662-3900

FAX: 559-673-6184

PARTS: 1-888-UR-PARTS

PARTS FAX: 1-800-669-9884

UpRight

Call Toll Free in U.S.A.

1-800-926-LIFT

UpRight

Unit S1, Park West Industrial Park

Friel Avenue

Nangor Road

Dublin 12, Ireland

TEL: +353 1 620 9300

FAX: +353 1 620 9301

TM12 PARTS MANUAL

This document lists and illustrates the replaceable assemblies and parts of this product, as manufactured by UpRight, Inc. Each parts list contains the component parts for that assembly.

TABLE OF CONTENTS

Final Assembly		PQ Controller	
107000-001	2	065512-000	16
Basic Assembly		Electrical Box Assembly	
107001-001	6	107008-001	17
Chassis Assembly, 1 of 4		Flow Control Valve Assembly	
107002-001	8	107061-000	18
Chassis Assembly, 2 of 4		Hydraulic Tank Assembly	
107002-001	9	107007-001	19
Chassis Assembly, 3 of 4		Label Kit, European	
107002-001	10	107012-012	20
Chassis Assembly, 4 of 4		Horn W/Pushbutton Option	
107002-001	11	107031-000	21
Hose Kit		Lanyard Option	
107011-001	12	030793-000	22
Control Valve Assembly			
101120-021	14		
Controller Assembly			
107010-000	15		

Final Assembly

107000-001

ITEM	PART NUMBER	DESCRIPTION	QTY
1	065543-000	COVER 4M	1
2	065536-000	TOP COVER	1
3	065580-001	PLATFORM WELDMENT	1
5	107012-012	DECAL KIT INSTL (NOT SHOWN)	1
6	107011-001	HOSE KIT (NOT SHOWN)	1
7	107010-000	CONTROLLER ASSY	1
8	107008-001	ELEC. BOX ASSY	1
9	029601-020	CONNECTOR RING 10-12 GA 1/4	2
10	107001-001	BASIC ASSY	1
11	029945-031	LEVEL SENSOR ASSY	1
12	010080-006	T-CLIP	4
13	063948-003	BATTERY CHARGER	1
14	010154-001	COVER BATTERY TERMINAL	8
15	015796-000	BATTERY 6V	4
16	107009-000	CONTROL CABLE ASSY	1
17	013919-018	CLAMP	2
18	107192-000	VALVE BLOCK CABLE ASSY	1
19	107193-000	LOWER CONTROL CABLE ASSY	1
20	107194-001	CHASSIS CABLE ASSY	1
21	011240-005	WASHER 5/16 STD FLAT	4
22	011248-005	LOCKNUT 5/16-18UNC HEX	6
23	011253-006	SCREW 5/16-18UNC HHC X 3/4	2
24	026616-008	NIPPLE 1 CHASE	1
25	029939-004	LOCKNUT 1 NPT	1
26	013923-004	SCREW #10 SLFTP X 1/2	8
27	011252-006	SCREW 1/4-20UNC HHC X 3/4	9
28	011829-006	BOLT 1/4-20UNC CARRIAGE X 3/4	8
29	011248-004	LOCKNUT 1/4-20UNC HEX	13

ITEM	PART NUMBER	DESCRIPTION	QTY
30	011240-004	WASHER 1/4 DIA STD FLAT	6
31	101182-006	CABLE ASSY W/ CONNECTOR	1
32	062125-016	BATTERY CABLE ASSY 5/16-3/8 X 16	2
33	064195-008	BATTERY CABLE ASSY 5/16-5/16 X 8	3
34	064195-014	BATTERY CABLE ASSY 5/16-5/16 X 14	1
35	014252-004	NUTSERT 1/4-20 UNC	4
36	064195-018	BATTERY CABLE ASSY 5/16-5/16 X 18	1
37	101182-005	CABLE ASSY W/ CONNECTOR	1
39	065369-001	HOSE GUARD X 18 (NOT SHOWN-SEE HOSE KIT)	2
40	065589-000	TOEBOARD	1
41	020495-010	NUT HEX JAM 5/16-18	4
42	030768-001	LABEL CE (NOT SHOWN)	1
43	014924-001	U-BOLT 5/16-18	2
44	066594-000	MIDRAIL WELDMENT	1
45	107031-000	HORN W/PUSHBUTTON (NOT SHOWN)	1
46	107081-000	WELDMENT, BALLAST	2
47	107015-001	HYD SCHM	REF
48	107016-001	ELEC SCHM	REF
49	107197-000	PLATE - CHAIN COVER	1
50	110010-001	SPECIFICATION SHEET	REF
51	011252-012	SCREW 1/4-20 X 1 1/2	2
52	030793-000	LANYARD OPTION	1
53	060540-021	DOCUMENTATION KIT	1
54	107099-022	SERVICE MANUAL	1
55	107097-022	PARTS MANUAL	1
57	107098-022	OPERATOR MANUAL	1
58	010076-000	MANUAL CASE	1

Drawing Drawing 1 of 2

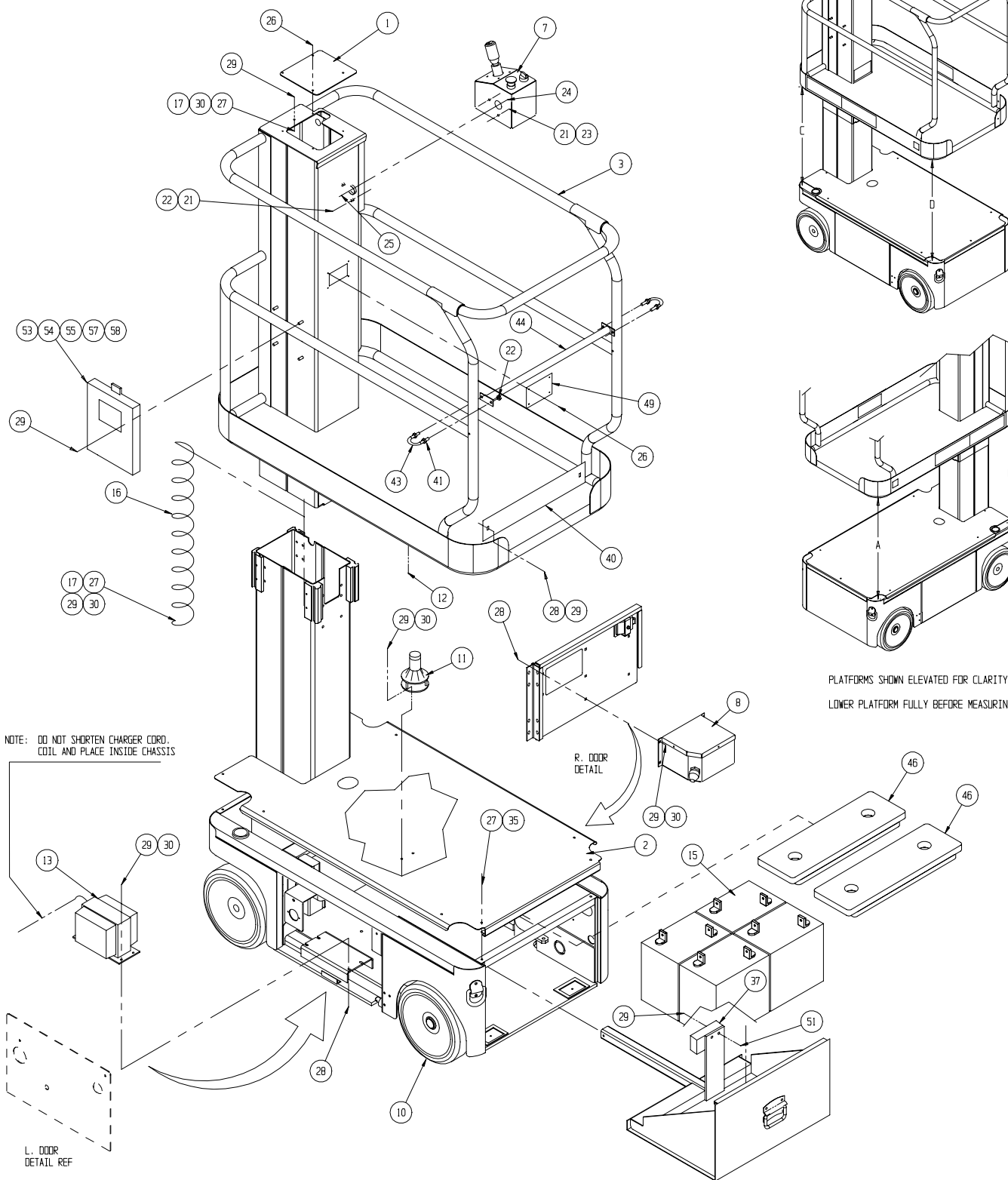
NOTE:



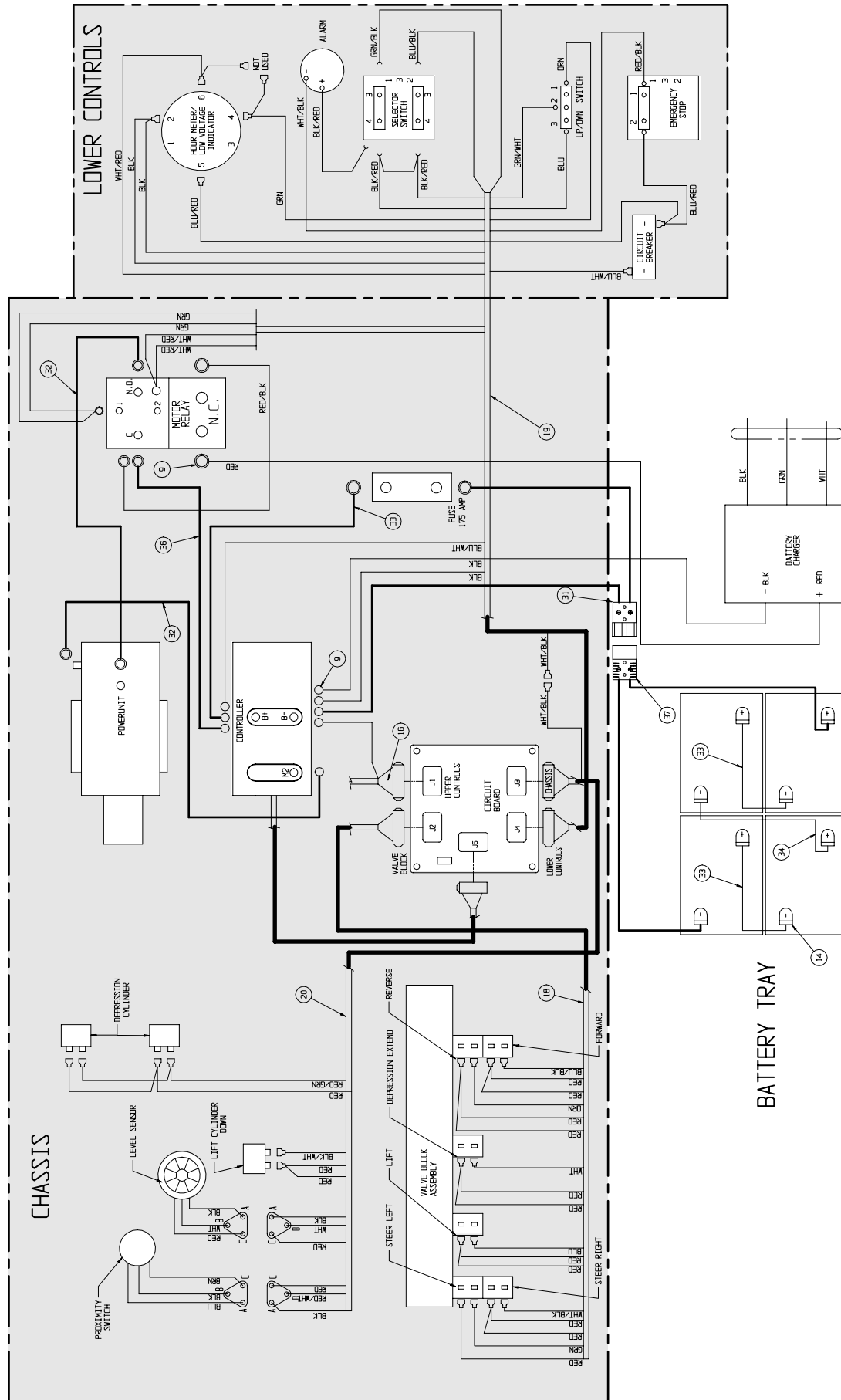
SEAL DOCUMENTS IN A PLASTIC BAG.
PLACE BAGGED DOCUMENTS INSIDE
MANUAL CASE AND SECURE CASE
WITH A TY-WRAP.

MEASUREMENTS TAKEN BETWEEN TOP SURFACE OF
CHASSIS FRAME AND BOTTOM SURFACE OF PLATFORM PAN

MEASUREMENTS A, B, C, & D MUST BE WITHIN A RANGE
THAT DOES NOT EXCEED 5/8"



Drawing 2 of 2



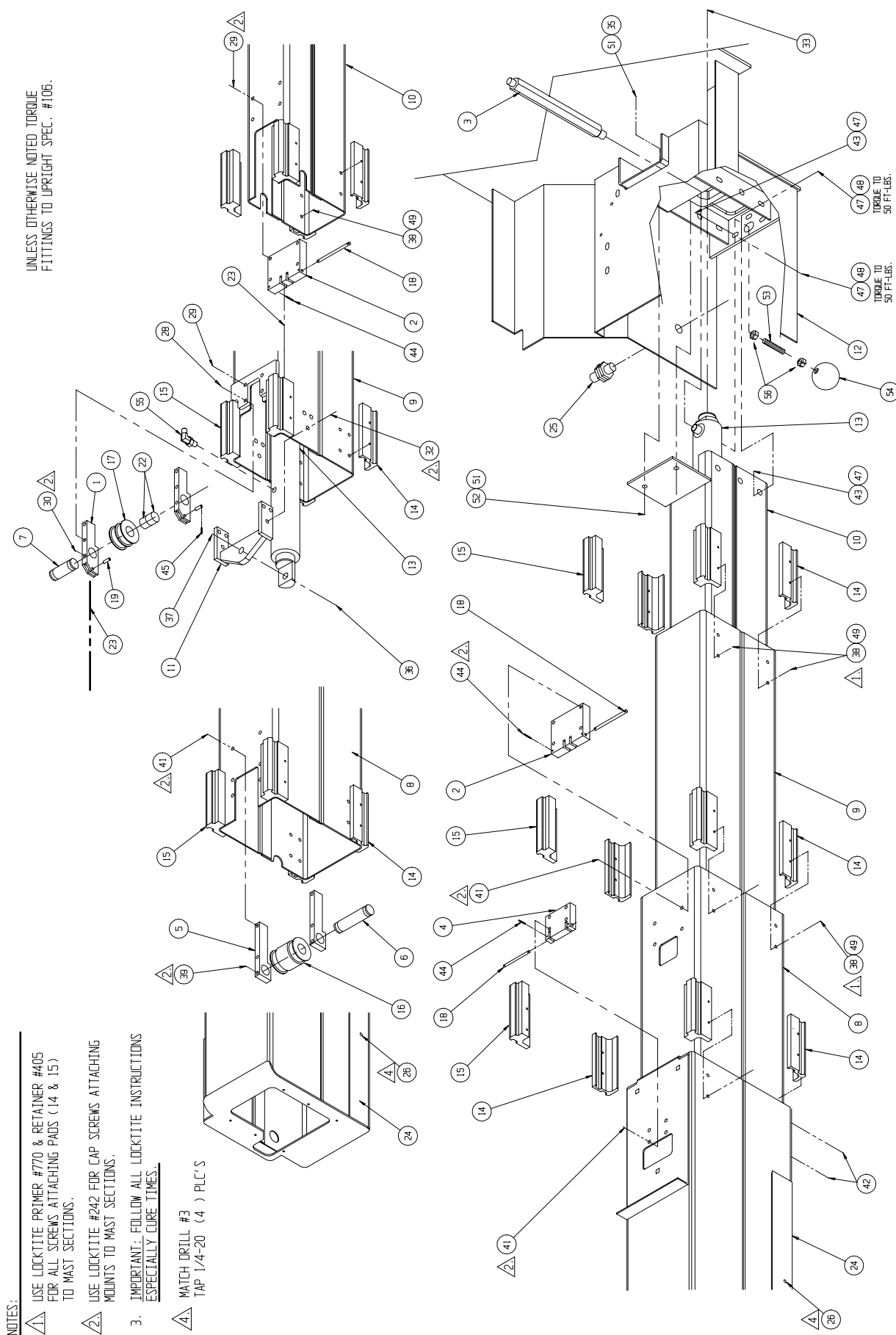
NOTES:

Basic Assembly

107001-001

ITEM	PART NUMBER	DESCRIPTION	QTY
1	065562-001	INNER MOUNT	2
2	065561-001	ANCHOR INNER	2
3	107082-000	ADAPTER 6MB-6MJ X 9"	1
4	065542-001	OUTER ANCHOR	1
5	065540-000	OUTER MOUNT	2
6	065539-001	OUTER AXLE	1
7	065538-001	INNER AXLE	1
8	065491-001	SECOND INNER MAST WEDMENT 4M	1
9	065488-001	LOWER INNER MAST WELDMENT	1
10	065485-004	BASE MAST WELDMENT	1
11	065450-001	CYL. BAR & PAD WELDMENT	1
12	107002-001	CHASSIS ASSY	1
13	107060-001	LIFT CYLINDER ASSY	1
*	107060-010	SEAL KIT, LIFT CYLINDER	REF
*	066179-000	EMERGENCY LOWERING VALVE	REF
14	065389-000	FRONT PAD	12
15	065388-000	REAR PAD	12
16	065387-001	PULLEY OUTER	1
17	065386-001	PULLEY INNER	1
18	065383-001	PIN	3
19	065382-001	ANCHOR PIN	2
22	062642-019	BEARING 7/8 ID X 3/4 LG	2
23	062167-103	CHAIN LEAF	4
24	065580-001	PLATFORM WELDMENT	REF
25	065366-020	SWITCH, PROXIMITY ASSY	1

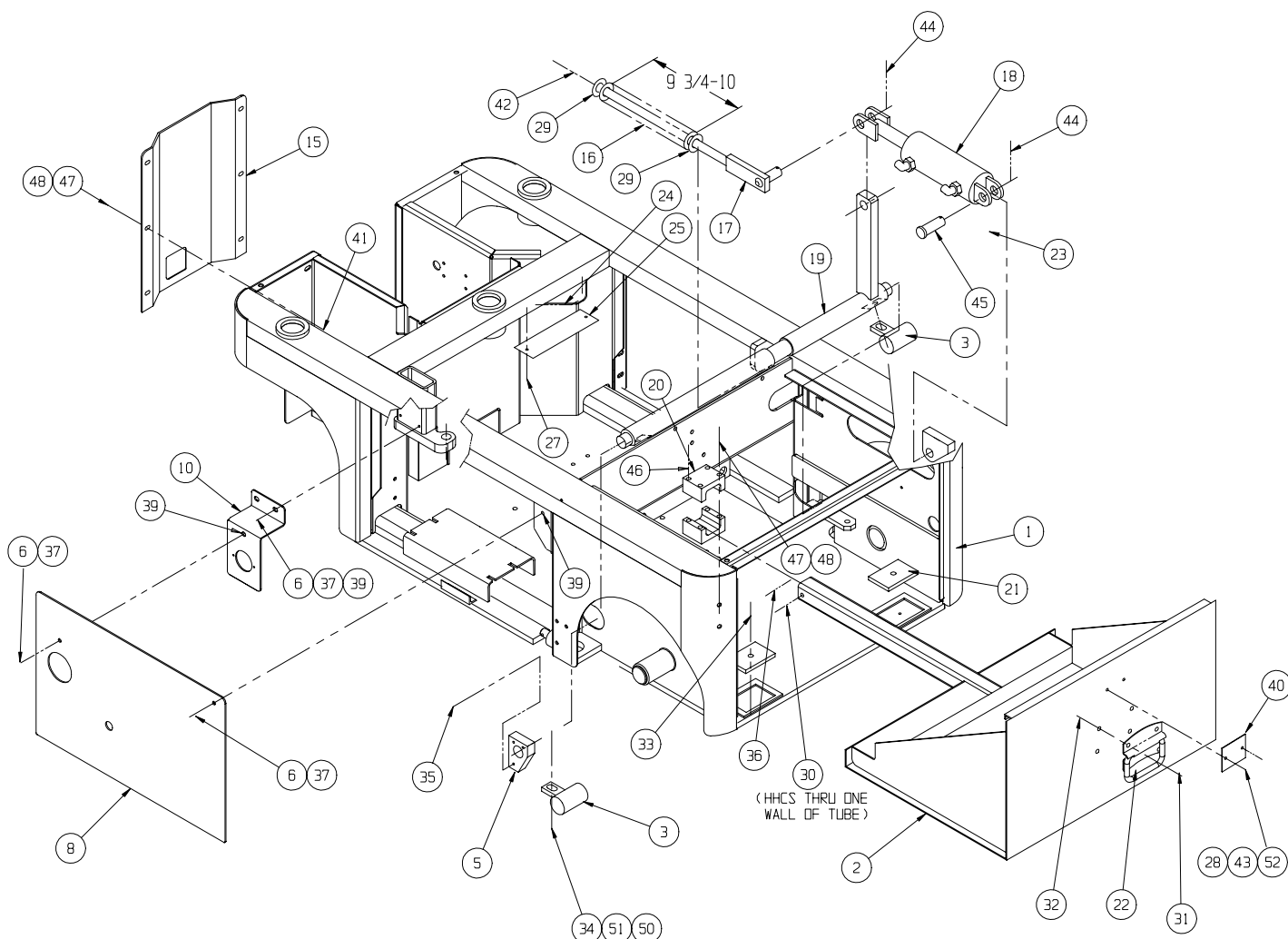
ITEM	PART NUMBER	DESCRIPTION	QTY
26	013336-011	GREASE ZERK	4
28	011828-010	SCREW, 1/4-20 X 1 1/4 FH	2
29	011821-006	SCREW, 1/4-20 X 3/4 BH	6
30	012553-012	SCREW 1/4-20UNC SOC HD x 1 1/2	2
32	011253-004	SCREW 5/16-18UNC HHC X 1/2	6
33	013315-009	RING RETAINING	1
35	011248-006	LOCKNUT 3/8-16UNC HEX	2
36	011248-008	LOCKNUT 1/2-13UNC HEX	1
37	011256-016	SCREW 1/2-13UNC HHC X 2	1
38	013923-004	SCREW #10-ABHWH X 1/2	44
39	012553-010	SCREW 1/4-20UNC SOC HD x 1 1/4	2
41	012553-006	SCREW 1/4-20UNC SOC HD X 3/4	12
42	026553-001	POP-RIVET 3/16 X 1/8 GRIP	4
43	011264-210	SCREW HHC GR8 3/8-24 UNF X 1 1/4	9
44	011735-005	ROLL PIN 1/8 x 5/8	6
45	011751-006	COTTER PIN 1/16 X 3/4	4
47	011239-006	WASHER, FLAT ASTM A325 3/8	18
48	011261-106	NUT, HEX GR8 3/8-24 UNF	9
49	013949-003	WASHER #10 EXT. STAR	44
51	011240-006	WASHER 3/8 STD FLAT	4
52	011254-008	SCREW, HHC. 3/8-16 X 1	2
53	069040-001	THREADED STUD 1/4-28 X 2	1
54	069041-000	KNOB - RED	1
55	107083-000	FITTING 1/8 NPT - 1/4 TUBE 90°	1
56	020495-004	NUT, JAM 1/4-28	2



Chassis Assembly, 1 of 4

107002-001

ITEM	PART NUMBER	DESCRIPTION	QTY	ITEM	PART NUMBER	DESCRIPTION	QTY
1	107133-000	CHASSIS WELDMENT TM12	1	30	011252-006	SCREW HHC 1/4-20UNC x 3/4	1
2	065465-000	BATTERY PAN WELDMENT	1	31	064397-003	NUT ACORN 10-24 NC	4
3	065472-000	SHOE PARK BRAKE	2	32	011709-004	SCREW MRDHD 10-24UNC x 1/2	4
5	065384-000	BRAKE BEARING	2	33	026553-008	RIVET 3/16 X .501-.625 GRIP	2
6	011252-004	SCREW HHC 1/4-20 X 1/2 LG	4	34	011256-012	SCREW HHC 1/2-13UNC x 1 1/2	2
8	107131-002	CHASSIS ACCESS PANEL	1	35	014066-006	SCREW 1/4 AB x 3/4	6
10	107153-000	BRACKET CHARGER CORD	1	36	011248-004	NUT HEX 1/4-20 UNC	1
15	065532-000	FRONT COVER	1	37	011240-004	WASHER FLAT STD 1/4	4
16	010121-010	SPRING COMPRESSION	1	39	014252-004	NUTSERT 1/4-20	4
17	065474-000	TENSION BAR WELDMENT	1	40	065569-000	LATCH PLATE	1
18	065397-003	CYLINDER ASSY	1	41	011830-006	BOLT CARRIAGE 5/16-18 x 3/4	6
*	065397-011	SEAL KIT, CYLINDER		42	011248-010	NUT HEX 5/8-11 UNC	1
19	065469-000	BRAKE ACTUATOR WELDMENT	1	43	011240-003	WASHER STD FLAT #10	1
20	065385-000	GUIDE PAD	2	44	011757-010	COTTER PIN, RUE RING, 3/4	2
21	065380-000	SLIDE PAD	2	45	011848-041	PIN 3/4 PIVOT	1
22	026541-016	HANDLE	1	47	011248-005	NUT HEX 5/16-18 UNC	10
24	061796-099	GROMMET (EDGING) FT	1.33	48	011240-005	WASHER FLAT STD 5/16	10
25	065656-000	WEAR PAD	2	50	011240-008	WASHER 1/2 STD FLAT	2
27	065368-000	TACK	4	51	011238-008	WASHER 1/2 SPLIT LOCK	2
28	026553-004	RIVET 3/16 X .250-.375 GRIP	2	52	010414-001	LOCKING PIN ASSY X 6	1
29	014996-010	WASHER 5/8 SAE	2	55	065352-000	CHANNEL	1



UNLESS OTHERWISE NOTED TORQUE
FITTINGS TO UPRIGHT SPEC. #106.

Chassis Assembly, 2 of 4

107002-001

ITEM	PART NUMBER	DESCRIPTION	QTY
100	101125-001	MOTOR HYDRAULIC	2
101	065393-003	WHEEL, DRIVE	2
102	107186-000	WHEEL YOKE, L.H.	1
103	107185-000	WHEEL YOKE, R.H.	1
104	065517-000	STEER LINK RH	1
105	065445-000	BELL CRANK WELDMT	1
106	065397-003	CYLINDER ASSY, BRAKE/STEER	1
*	065397-011	SEAL KIT, BRAKE/STEER CYLINDER	
107	011934-001	FITTING, 90° 4MBH-4MJ	2
108	011848-041	PIN 3/4 PIVOT	2
109	011757-010	COTTER PIN, RUE RING 3/4"	4
110	011753-012	PIN COTTER 1/8 x 1 1/2	2
111	065518-000	STEER LINK LH	1

ITEM	PART NUMBER	DESCRIPTION	QTY
112	011256-026	SCREW HHC GR5 1/2-13 UNC x 3 1/4	8
113	011248-008	NUT HEX 1/2-13 UNC	8
114	010092-011	WASHER THRUST 1 1/2	3
115	027931-068	BEARING 1 1/2	3
116	065534-000	STEER PIN	4
117	011736-012	ROLL PIN 3/16 DIA. x 1 1/2	4
118	011941-005	FITTING STRAIGHT 6-6S	4
119	011786-007	BUSHING MACHINE 1 1/2 I.D.	3
120	013315-009	RETAINING RING	3
121	027931-022	BEARING 3/4 I.D.	5
122	010092-005	WASHER THRUST 3/4 I.D.	4
123	011240-008	WASHER FLAT STD 1/2	8

NOTES:

1 BURNISH BEARINGS AFTER ASSEMBLY TO 1.502/1.504.

2 BURNISH BEARINGS AFTER ASSEMBLY TO .750/.752.

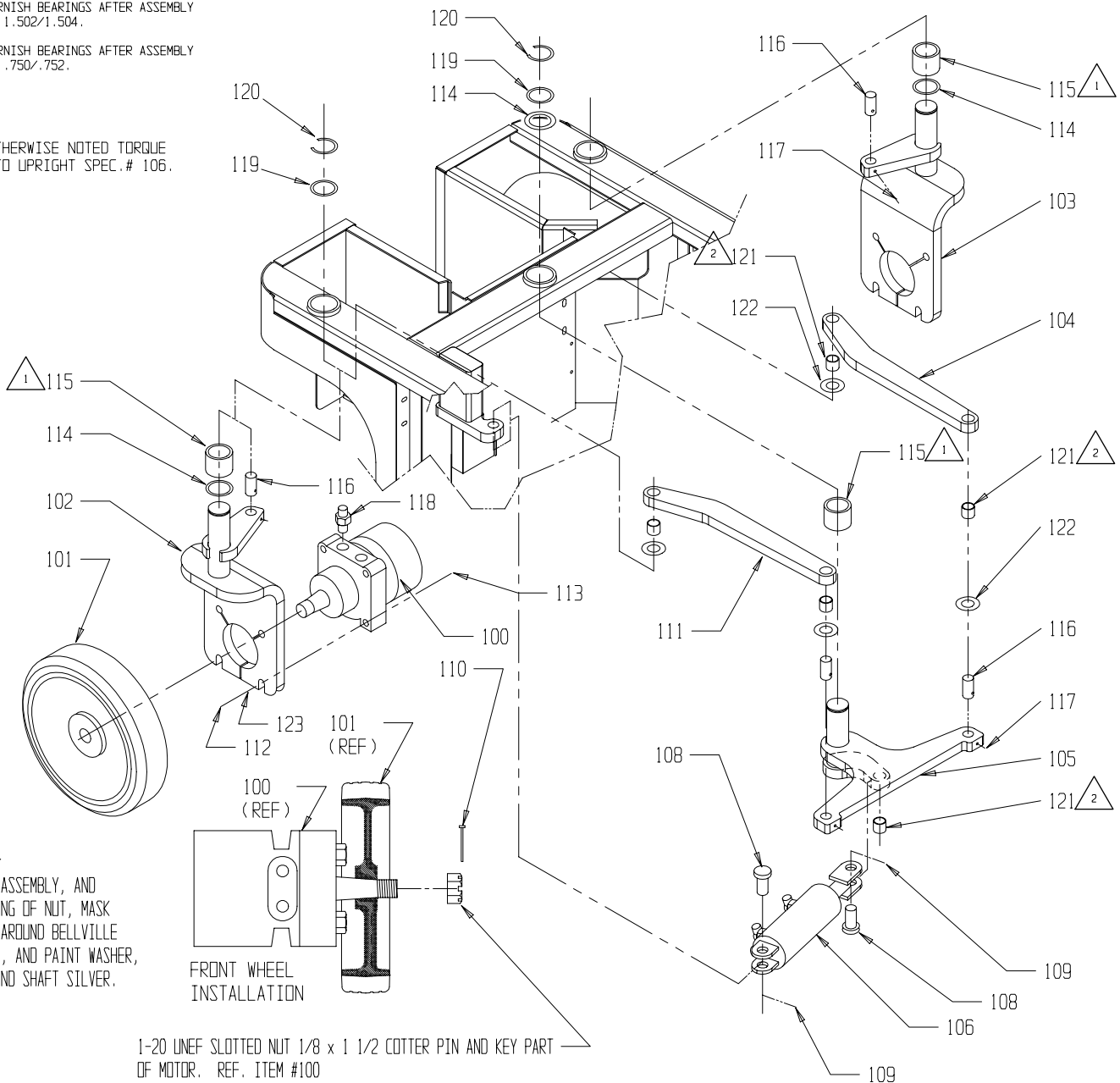
UNLESS OTHERWISE NOTED TORQUE FITTING TO UPRIGHT SPEC. # 106.

NOTE:

AFTER ASSEMBLY, AND TORQUING OF NUT, MASK WHEEL AROUND BELLVILLE WASHER, AND PAINT WASHER, NUT, AND SHAFT SILVER.

FRONT WHEEL INSTALLATION

1-20 UNEF SLOTTED NUT 1/8 x 1 1/2 COTTER PIN AND KEY PART OF MOTOR. REF. ITEM #100
CLEAN MOTOR SHAFT AND HUB BORE.
LUBRICATE NUT FACE AND THREADS.
TORQUE SLOTTED NUT TO 75 ±5 FT LBS BOTH WHEELS.

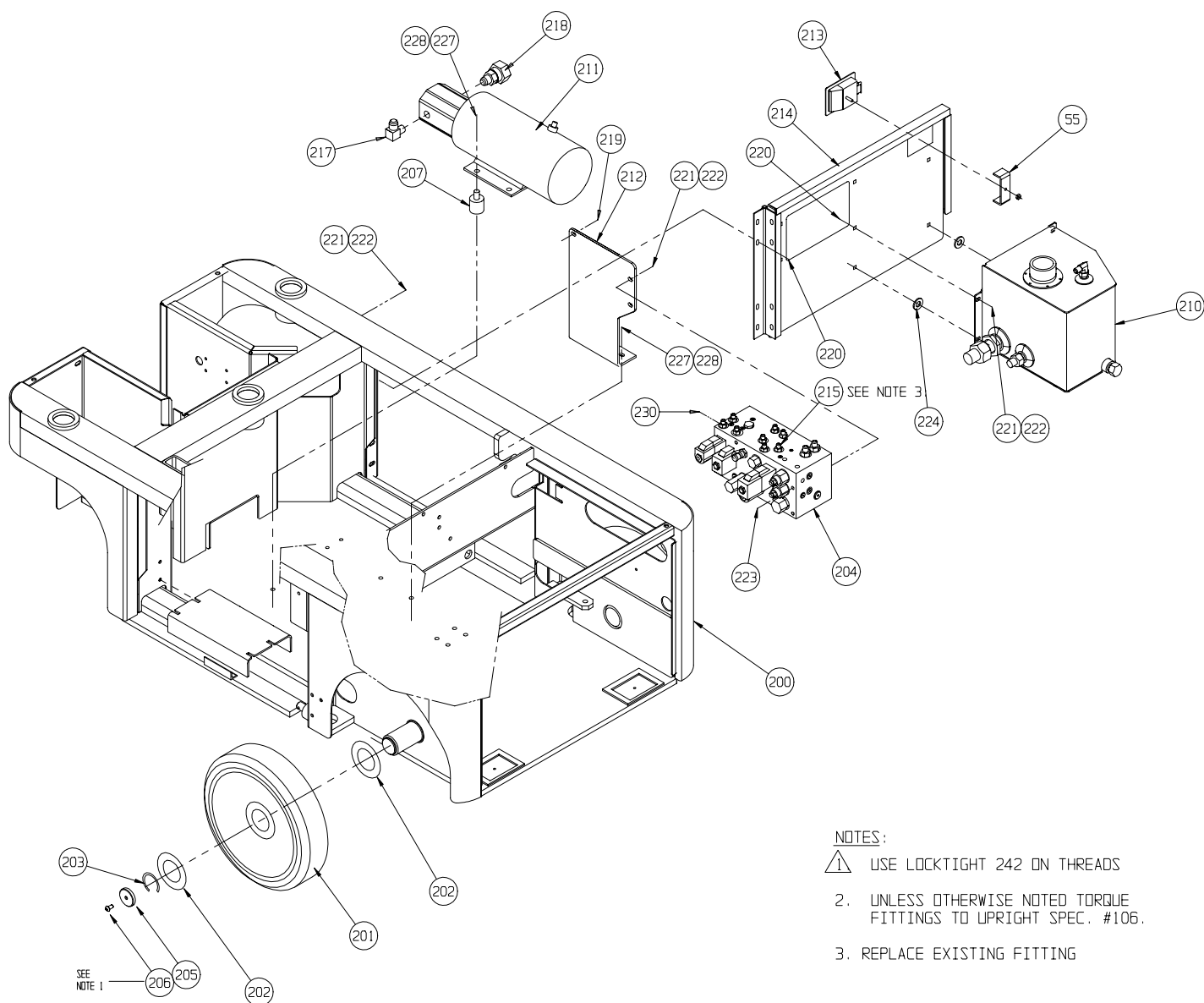


Chassis Assembly, 3 of 4

107002-001

ITEM	PART NUMBER	DESCRIPTION	QTY
200	107133-000	CHASSIS WELDMENT	REF
201	065392-021	WHEEL IDLER	2
202	011786-014	BUSHING MACHINE 1 3/4 I.D.	4
203	013315-009	RETAINING RING 1 1/2	2
204	101120-021	CONTROL VALVE ASSEMBLY	1
205	065513-000	END CAP	2
206	011823-006	SCREW 3/8-16 BUTT HD X 3/4	2
207	066046-007	MOUNT, VIBRATION	4
210	107007-001	HYD RESERVOIR ASSY	1
211	101230-000	POWER UNIT	1
212	107152-000	BRACKET, CONTROL VALVE MOUNT	1
213	065395-000	LATCH	1
214	107150-000	PANEL WELDMENT RH	1

ITEM	PART NUMBER	DESCRIPTION	QTY
215	031006-004	FITTING STR 4MB-4MJ W/ .031 ORIFICE	1
217	011934-004	FITTING 90° 6MBH-6MJ	1
218	015959-004	FITTING 8MBH-12FJX	1
219	013919-010	CLAMP HOSE	1
220	011829-006	CARRIAGE BOLT 1/4-20 x 3/4	7
221	011240-004	WASHER FLAT STD 1/4	10
222	011248-004	NUT HEX 1/4-20 UNC	10
223	011252-040	SCREW HHC 1/4-20 X 5	3
224	107079-000	WASHER, RUBBER	2
227	011240-005	WASHER FLAT 5/16	6
228	011248-005	NUT HEX 5/16-18	6
230	020733-001	FITTING TEE #4	1



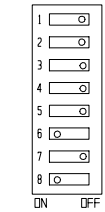
Chassis Assembly, 4 of 4

107002-001

ITEM	PART NUMBER	DESCRIPTION	QTY
301	107179-000	GUARD WELDMENT-L.H.	1
302	107180-000	GUARD WELDMENT-R.H.	1
303	027931-063	BRONZE BUSHING #AA 710-27	4
304	063973-001	VALVE N.C.	2
305	011934-001	FITTING 4MBH-4MJ	4
306	065970-001	CYLINDER DEPRESSION	2
*	065970-011	SEAL KIT, DEPRESSION CYLINDER	
307	014996-010	WASHER 5/8 SAE	4
308	011757-005	1/2 RUE RING	2
310	011848-019	CLEVIS PIN 3/4 X 2 1/2	2
311	011848-009	CLEVIS PIN 5/8 X2	2
312	011754-012	COTTER PIN 5/32 X 1 1/2	6
314	065984-000	HEATSINK PLATE	1
315	065709-001	CIRCUIT BOARD	1
316	065708-001	MOTOR CONTROL	1
317	011252-012	BOLT 1/4-20 UNC X 1 1/2	2
318	011248-004	LOCKNUT 1/4-20 HEX	6
319	011240-004	WASHER 1/4 DIA STD FLAT	8
320	011252-010	SCREW HHC 1/4-20 X 1 1/4	2

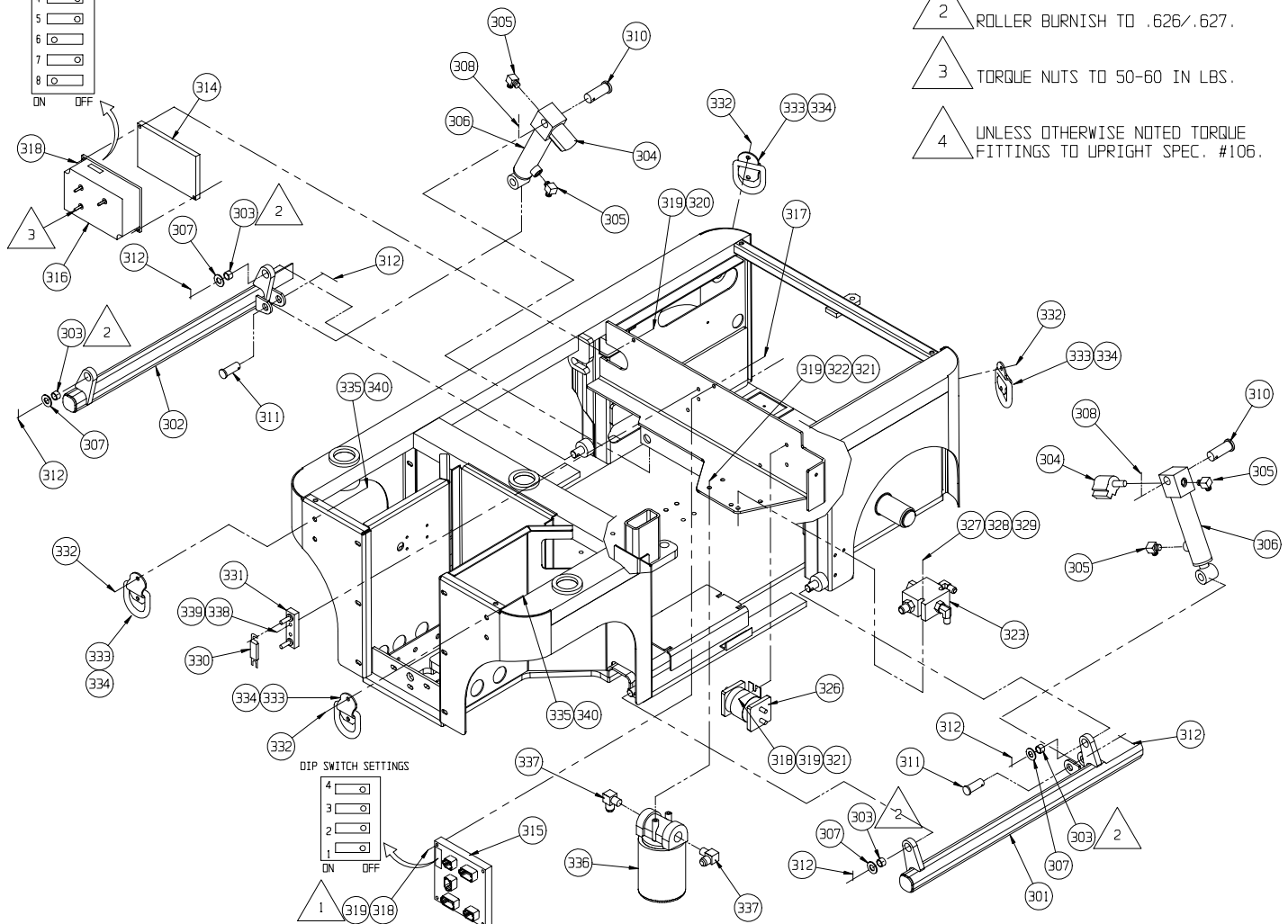
ITEM	PART NUMBER	DESCRIPTION	QTY
321	011252-006	SCREW HHC 1/4-20 X 3/4	4
322	011238-004	WASHER SPLIT LOCK 1/4	2
323	107061-000	FLOW CONTROL VALVE ASSY	1
326	010122-001	RELAY	1
327	011248-005	NUT HEX 5/16-18	2
328	011240-005	WASHER 5/16 FLAT	4
329	011253-018	SCREW HHC 5/16-18 X 2 1/4	2
330	010148-001	FUSE	1
331	010149-000	FUSE BLOCK	1
332	011254-008	SCREW HHC 3/8-16 X 1	8
333	107080-000	BRACKET - D-RING	4
334	107080-001	D-RING	4
335	011248-006	NUT HEX ESNA 3/8-16	8
336	005154-001	FILTER	1
337	011940-034	FITTING 90° 12MP-6MJ	2
338	011709-008	SCREW #10-24 X 1	2
339	011248-003	NUT HEX #10-24	2
340	011240-006	WASHER 3/8 FLAT	8

DIP SWITCH SETTINGS



NOTES:

- 1 DO NOT TORQUE CIRCUIT BOARD BOLTS, SNUG TIGHT ONLY.
- 2 ROLLER BURNISH TO .626/.627.
- 3 TORQUE NUTS TO 50-60 IN LBS.
- 4 UNLESS OTHERWISE NOTED TORQUE FITTINGS TO UPRIGHT SPEC. #106.

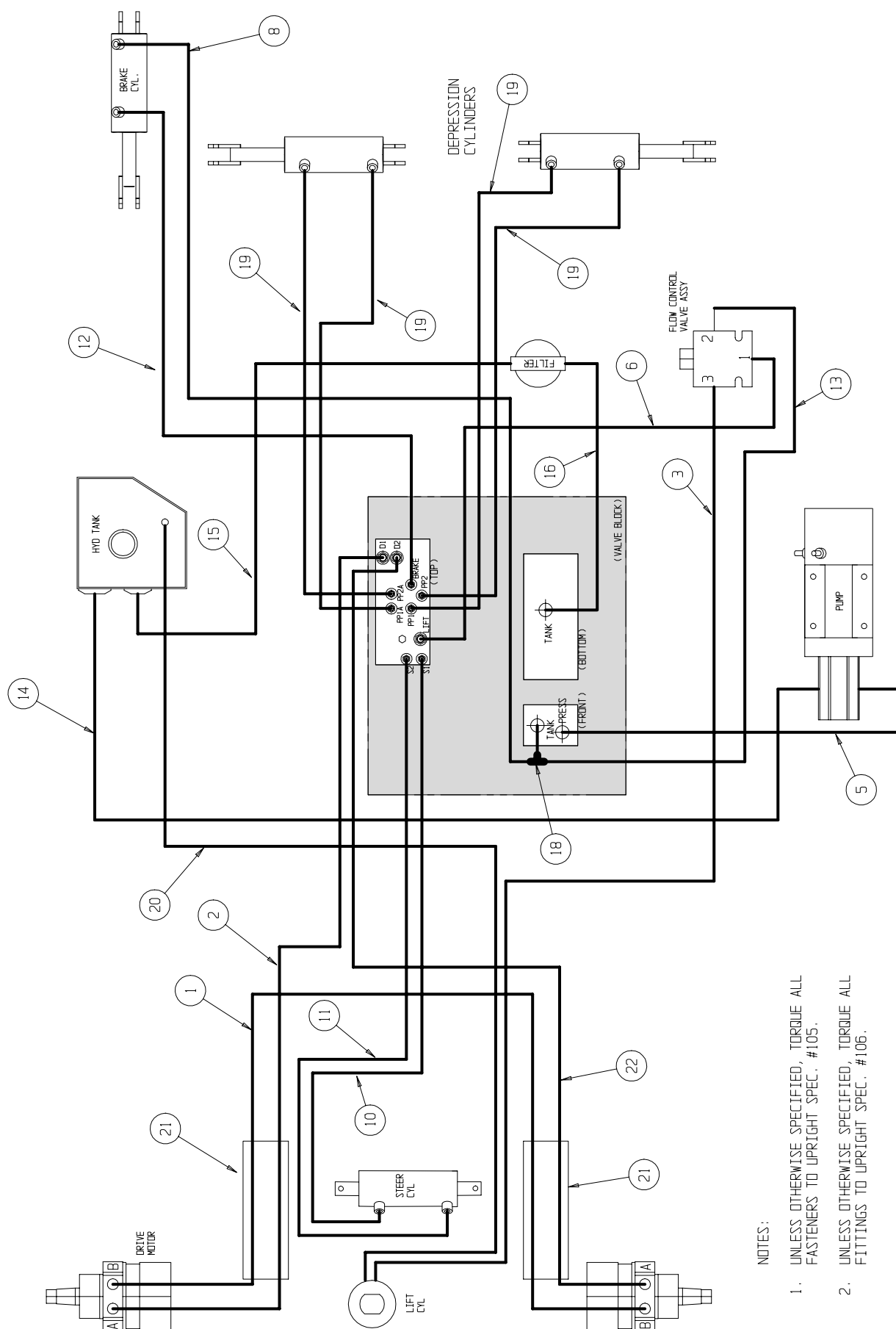


Hose Kit

107011-001

ITEM	PART NUMBER	DESCRIPTION	QTY
1	065419-042	HOSE ASSY 1/4 X 42 (6FJX-6FJX)	1
2	107092-038	HOSE ASSY 1/4 X 38 (6FJX-6FJX 90)	1
3	107092-025	HOSE ASSY 1/4 X 25 (6FJX-6FJX 90)	1
5	068965-017	HOSE ASSY 3/8 X 17 (6FJX-6FJX X 90)	1
6	068965-038	HOSE ASSY 3/8 X 38 (6FJX-6FJX X 90)	1
8	107091-047	HOSE ASSY 3/16 X 47 (4FJX-4FJX X 90)	1
10	107090-035	HOSE ASSY 1/4 X 35 (4FJX-4FJX X 90)	1
11	107090-029	HOSE ASSY 1/4 X 29 (4FJX-4FJX X 90)	1
12	107091-024	HOSE ASSY 3/16 X 24 (4FJX-4FJX X 90)	1

ITEM	PART NUMBER	DESCRIPTION	QTY
13	061351-025	HOSE ASSY 1/8 X 40 (4FJX-4FJX)	1
14	061789-026	HOSE ASSY 3/4 X 26 (12FJX-12MP)	1
15	068965-018	HOSE ASSY 3/8 x 18 (6FJX-6FJX X 90)	1
16	060861-054	HOSE ASSY 3/8 X 40 1/2 (6FJX - 6FJX)	1
18	020733-001	FITTING, TEE #4	REF
19	107091-024	HOSE ASSY 3/16 X 24	4
20	107085-001	TUBE BLACK POLY, 1/4" X 96"	1
21	065369-099	HOSE GUARD NYLON X 18"	REF
22	107092-044	HOSE ASSY 1/4 X 44 (6FJX-6FJX 90)	1



NOTES:

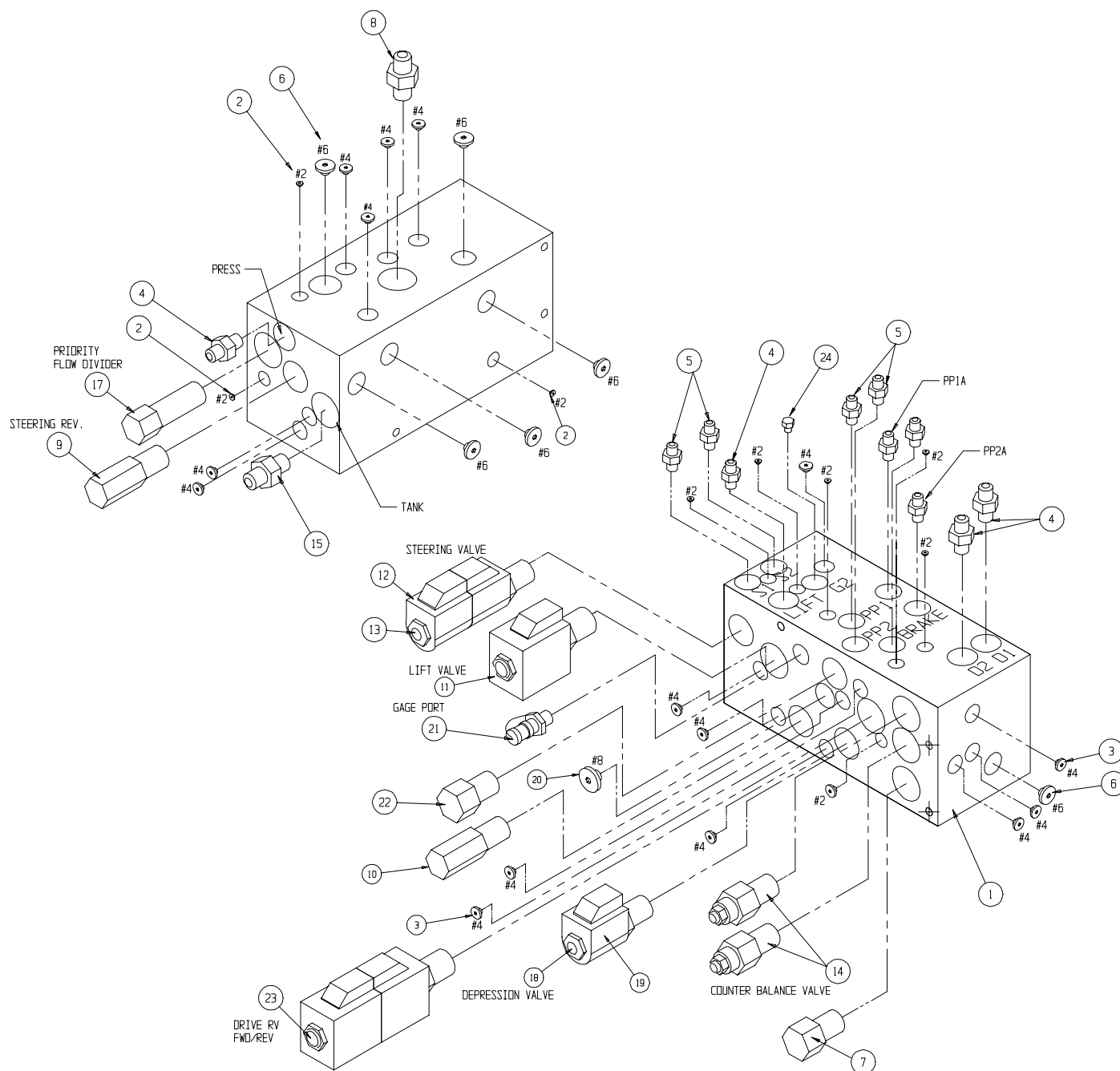
1. UNLESS OTHERWISE SPECIFIED, TORQUE ALL FASTENERS TO UPRIGHT SPEC. #105.
2. UNLESS OTHERWISE SPECIFIED, TORQUE ALL FITTINGS TO UPRIGHT SPEC. #106.

Control Valve Assembly

101120-021

ITEM	PART NO.	DESCRIPTION	QTY
1	100020-040	CONTROL VALVE BLOCK	1
2	012004-002	FITTING #2 PLUG	9
3	012004-004	FITTING #4 PLUG	15
4	011941-005	FITTING STRAIGHT 6MB - 6MJ	3
5	011941-001	FITTING STR 4MBH - 4MJ	7
6	012004-006	FITTING PLUG #6	6
7	063955-008	PLUG CAVITY #8 2 WAY	1
8	011941-009	FITTING 8MB-6MJX	1
9	060390-013	RELIEF VALVE, STEERING (1500 PSI)	1
10	060390-025	RELIEF VALVE, MAIN (3000 PSI)	1
11	063923-006	2 POS - 4 WAY SOLENOID W/ COIL	1
12	101120-033	COIL	2

ITEM	PART NO.	DESCRIPTION	QTY
13	064845-000	3 POS - 4 WAY SOLENOID W/ COILS	1
14	101120-035	COUNTERBALANCE VALVE	2
15	011941-008	FITTING STR 8MB-4MJ	1
17	064843-000	FLOW DIVIDER VALVE (1.0 GPM)	1
18	063973-001	2 POS POPPET VALVE W/ COIL	1
19	101120-033	COIL	1
20	012004-008	FITTING #8 PLUG	1
21	063965-001	FITTING GAGE	1
22	064841-000	CHECK VALVE	1
23	063923-021	3 POS - 4 WAY SOLENOID W/ COILS	1
24	020021-004	FITTING, PLUG #4	1

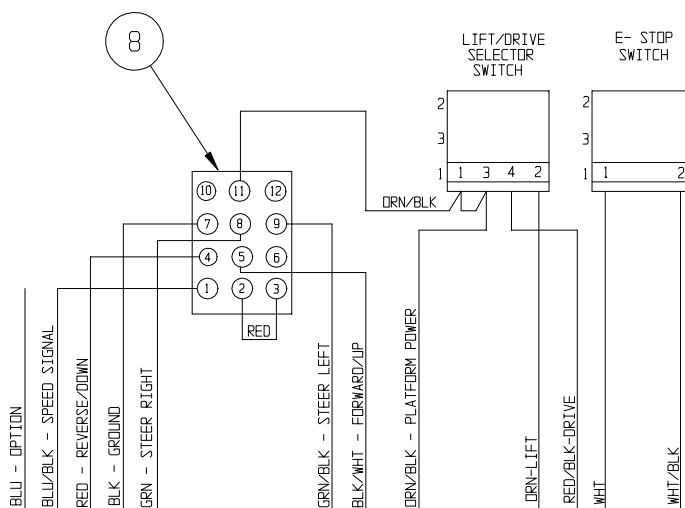
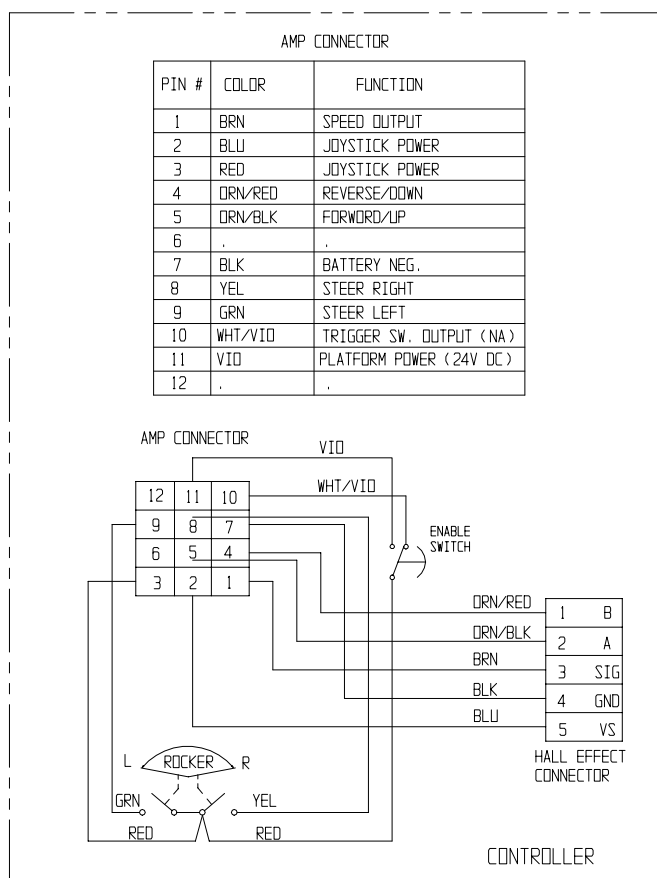
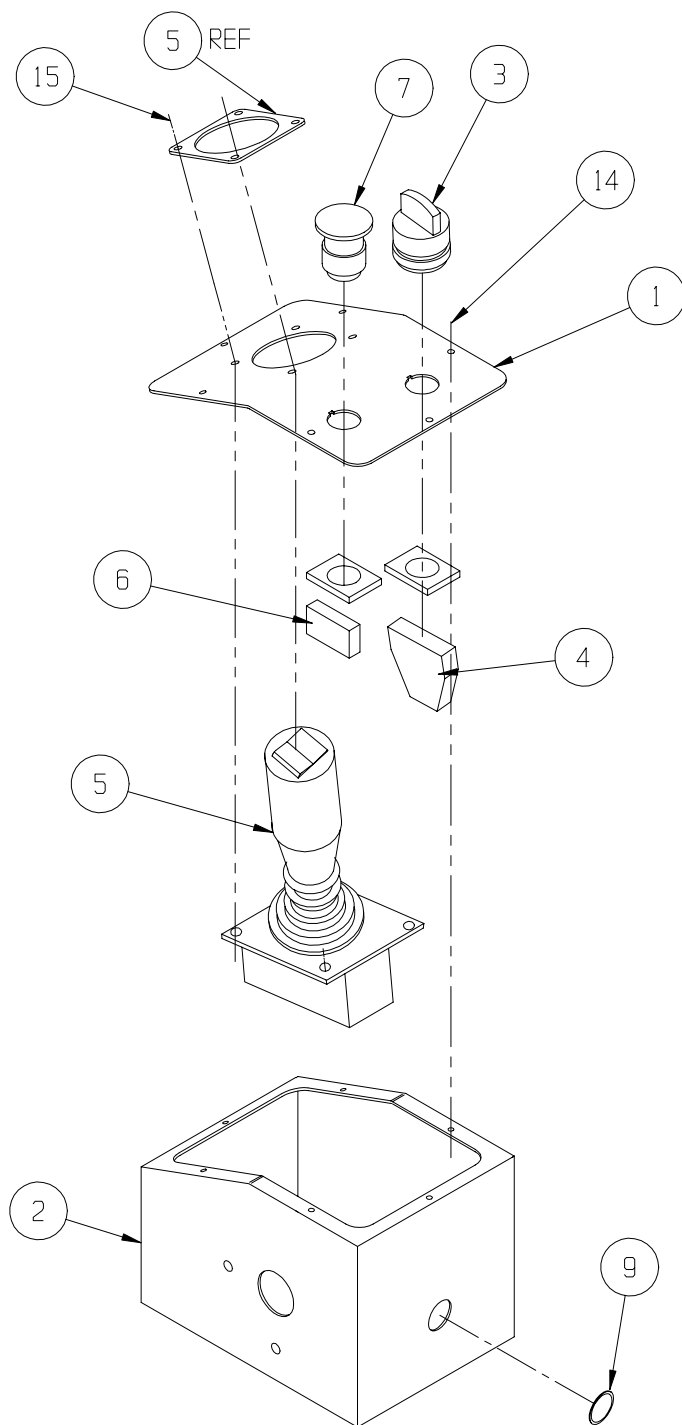


Controller Assembly

107010-000

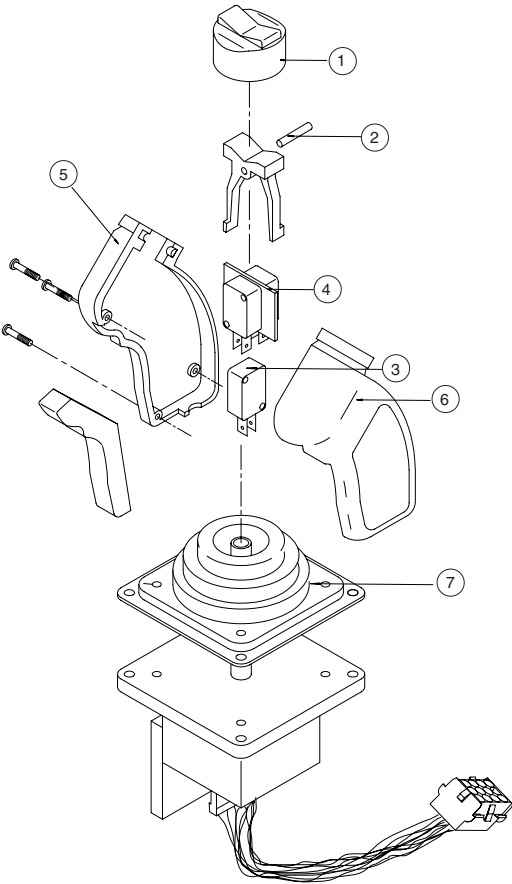
ITEM	PART NO.	DESCRIPTION	QTY
1	107157-000	CONTROL COVER	1
2	107159-000	CONTROLLER WELDMENT	1
3	066805-002	SWITCH, SELECTOR - 2 POSITION	1
-	068807-010	KEY (NOT SHOWN)	1
4	066805-012	CONTACT BLOCK, NO-NC	1
5	065512-000	CONTROLLER PQ	1

ITEM	PART NO.	DESCRIPTION	QTY
6	066805-011	CONTACT BLOCK	1
7	066805-006	PUSHBUTTON	1
8	063956-003	CONN 12 PIN MATE N LOC	1
9	064462-029	HOLE PLUG	1
14	011826-004	SCREW 10-32 SLFTP X 1/2	6
15	026525-008	SCREW #8 SLFTP ABHWH X 1	4



PQ Controller
065512-000

ITEM	PART NO.	DESCRIPTION	QTY
1	063953-001	CAP, RUBBER	1
2	065512-013	ROCKER, PIN	1
3	063953-007	SWITCH, INTERLOCK	1
4	065512-015	SWITCH, STEERING	1
5	065512-016	HANDLE HALF, RIGHT	1
6	065512-017	HANDLE HALF, LEFT	1
7	065512-018	BOOT, HANDLE	1

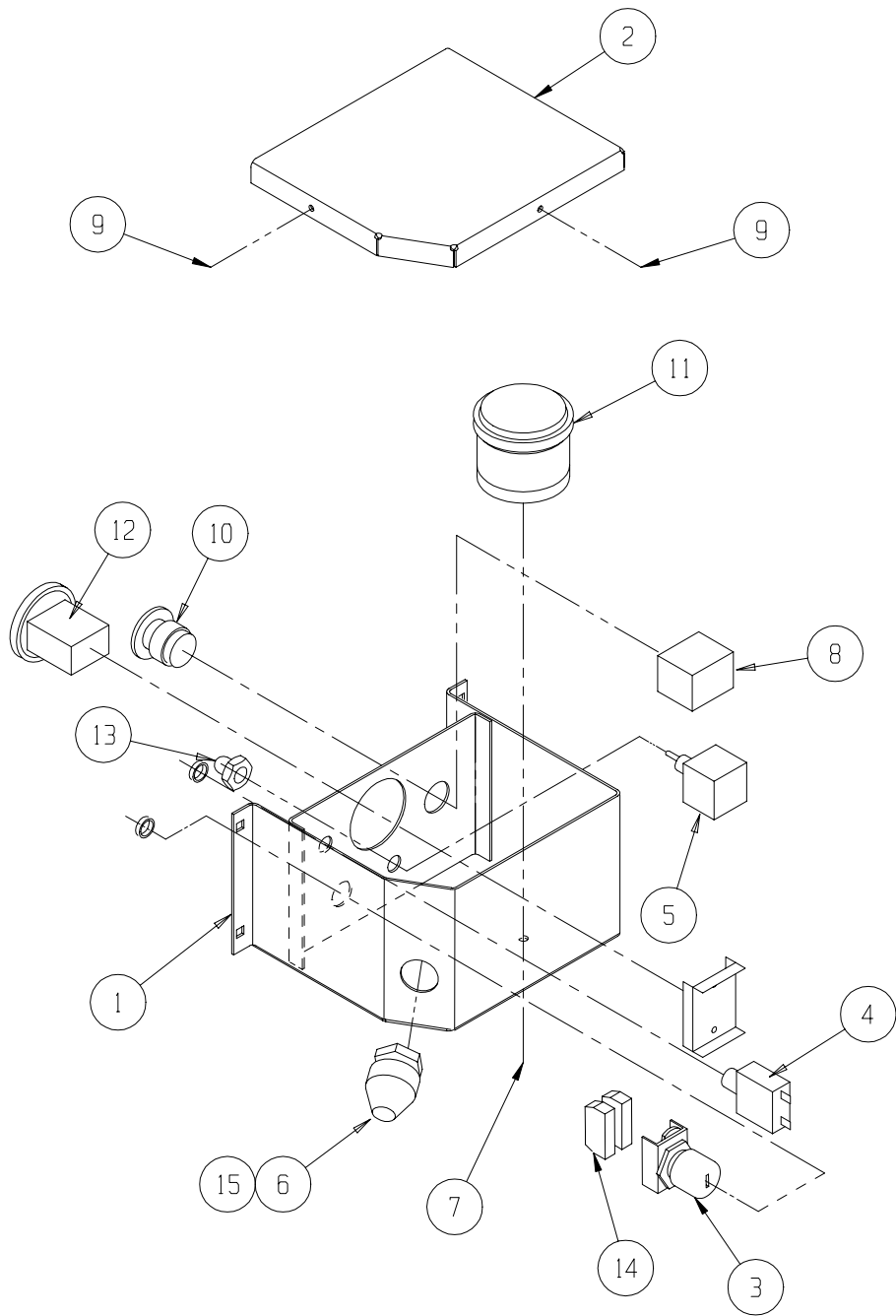


Electrical Box Assembly

107008-001

ITEM	PART NO.	DESCRIPTION	QTY
1	107123-000	BOX, ELECT. WELDMT	1
2	107148-000	BOX TOP	1
3	066805-004	SWITCH KEY SELECTOR	1
4	068582-005	CIRCUIT BREAKER 5 AMP	1
5	012798-000	SWITCH TOGGLE	1
6	029925-001	CONNECTOR CABLE 3/4	1
7	011725-006	SCREW, 1/4-20 UNC PAN HD x3/4	1
8	066805-011	SWITCH CONTACT	1

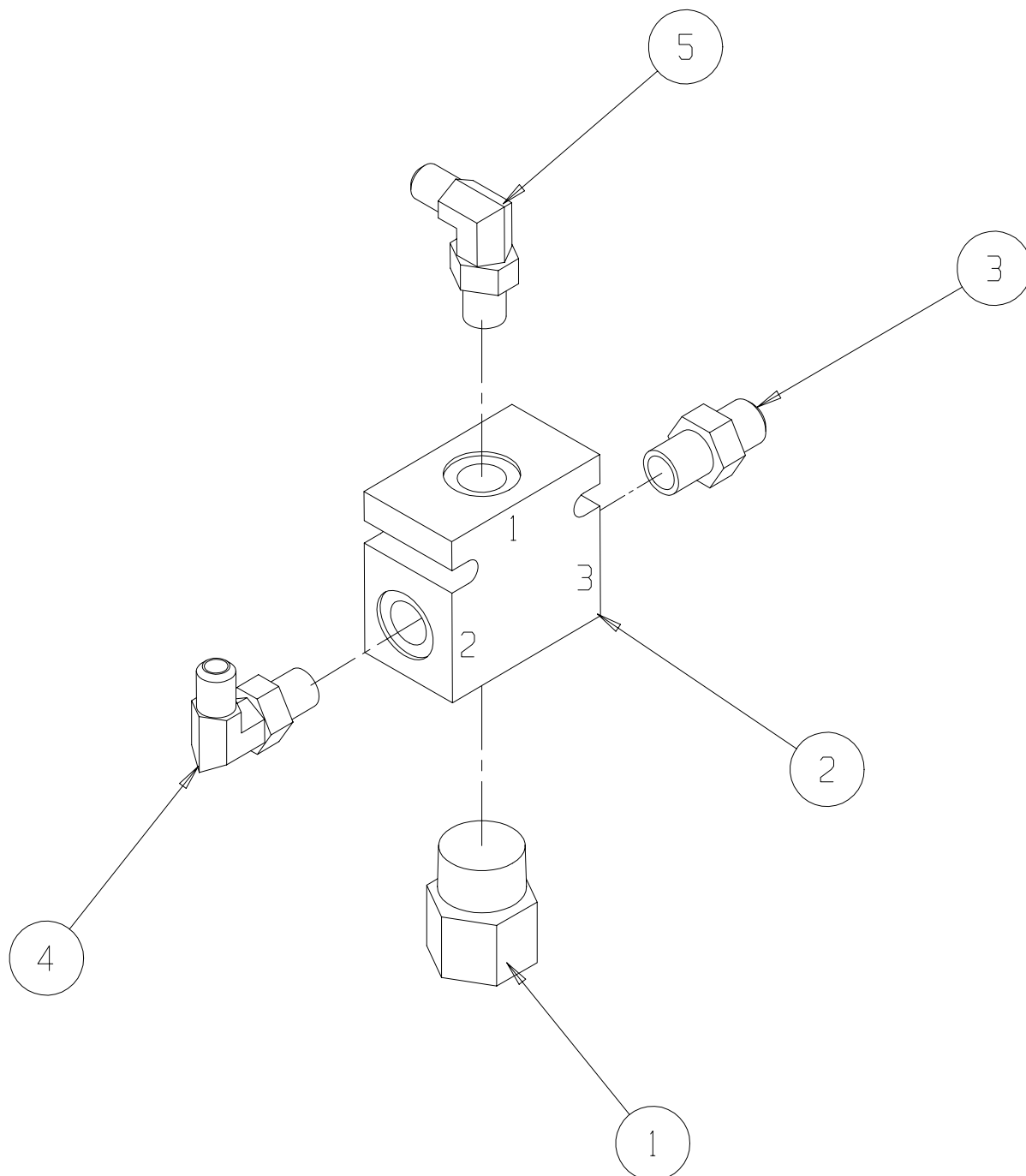
ITEM	PART NO.	DESCRIPTION	QTY
9	011811-004	SCREW,10-32 SELF-TAP x 1/2	3
10	066805-006	SWITCH HEAD-MUSHROOM	1
11	066807-001	ALARM, DUAL TONE	1
12	029959-000	LOW VOLTAGE HOUR METER	1
13	029872-000	BOOT SWITCH COVER	1
14	066805-010	CONTACT BLOCK	2
15	029939-003	LOCKNUT, CONDUIT 3/4	1



Flow Control Valve Assembly 107061-000

ITEM	PART NUMBER	DESCRIPTION	QTY
1	063924-008	VALVE, FLOW CONTROL 1.5GMP	1
2	107062-000	VALVE BODY	1
3	011941-005	FITTING, 6MB-6MJ	1
4	011934-003	FITTING, 6MB-4MJ X 90°	1
5	011934-004	FITTING, 6MB-6MJ X 90°	2

NOTE: UNLESS OTHERWISE NOTED, TORQUE
FITTINGS TO UR #106



Hydraulic Tank Assembly

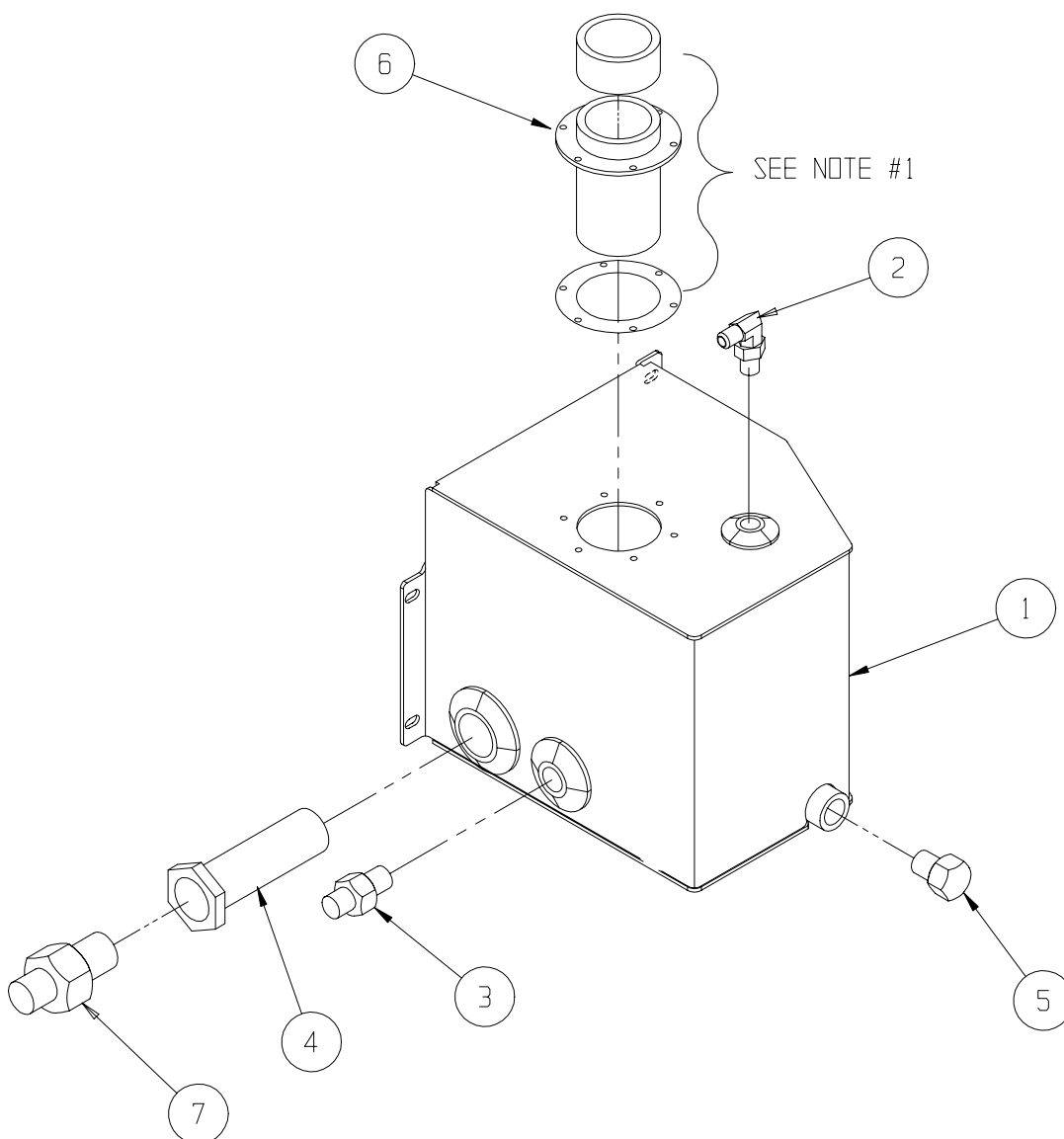
107007-001

ITEM	PART NUMBER	DESCRIPTION	QTY
1	107127-001	TANK WELDMENT	1
2	107084-000	FITTING 90° 1/4 NPT - 1/4 TUBING	1
3	011939-014	FITTING 8MP-6MJ	1
4	061818-000	SUCTION SCREEN/FITTING	1
5	021305-006	PLUG, MAGNETIC	1
6	005963-001	FILLER BREATHER	1
7	011939-021	FITTING 12 MP - 12 MJ	1

NOTES :

- △1 USE EXISTING SCREWS SUPPLIED W/BREATHER. SILICON SEAL GASKET & SCREWS @ INSTALLATION.
- △2 UNLESS OTHERWISE NOTED, TORQUE FITTINGS TO UR #106

USABLE VOLUME = 1.53 GAL.
TOTAL VOLUME = 1.96 GAL.
(MINUS FILL LEVEL)



Label Kit, European

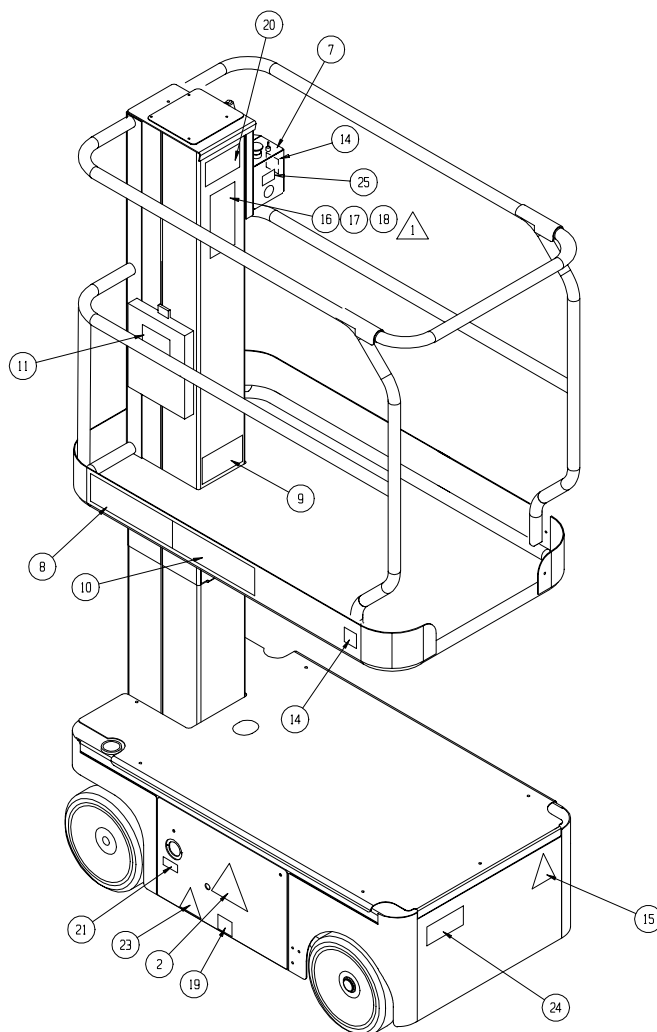
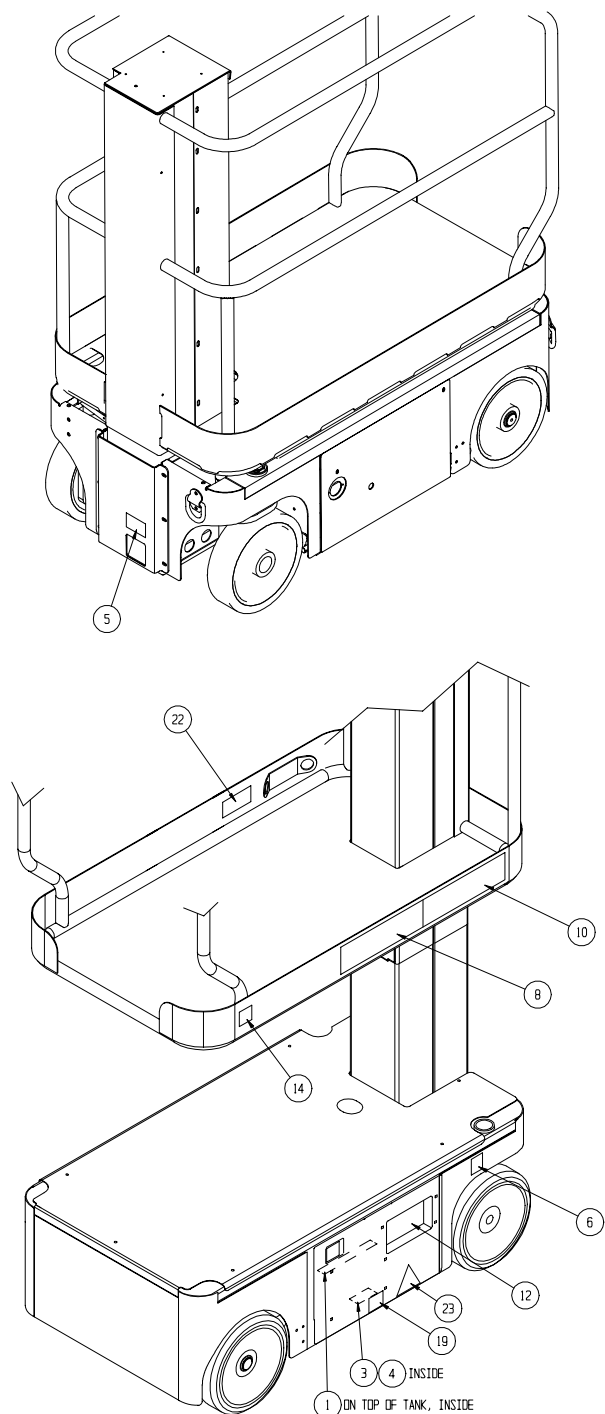
107012-012

ITEM	PART NUMBER	DESCRIPTION	QTY
1	060197-000	LABEL, HYD FLUID	1
2	101210-000	LABEL, WARNING BATTERIES	1
3	061205-003	NAME PLATE	1
4	065368-000	TACK	4
5	005223-909	LABEL, EMERGENCY DOWN	1
6	030768-001	LABEL, CE	1
7	107050-900	LABEL, CONTROLLER	1
8	061683-003	LABEL, UPRIGHT	2
9	107052-000	LABEL, MAX LOAD 227 KG	1
10	061684-014	LABEL, TM12	2
11	010076-901	LABEL, ATTENTION	1
12	065568-901	LABEL, CONTROLS	1

ITEM	PART NUMBER	DESCRIPTION	QTY
14	064444-000	LABEL, USA	3
15	062562-951	LABEL, BATTERIES	1
16	067195-002	LABEL, INSTRUCTIONS	1
17	067195-202	LABEL, INSTRUCTIONS (FRENCH)	1
18	067195-302	LABEL, INSTRUCTIONS (GERMAN)	1
19	014222-903	LABEL, FORK LIFT	2
20	100102-900	LABEL, NOT INSULATED	1
21	066522-900	LABEL, BATTERY CHARGER	1
22	068635-001	LABEL, HARNESS HARDPOINT	1
23	101208-001	LABEL, WARNING	2
24	107051-900	LABEL, BATTERY DISCONNECT	1
25	107053-000	LABEL, HORN	1

NOTES:

1. INSTALL ONE LABEL ACCORDING TO COUNTRY. BAG OTHERS IN MANUAL CASE.

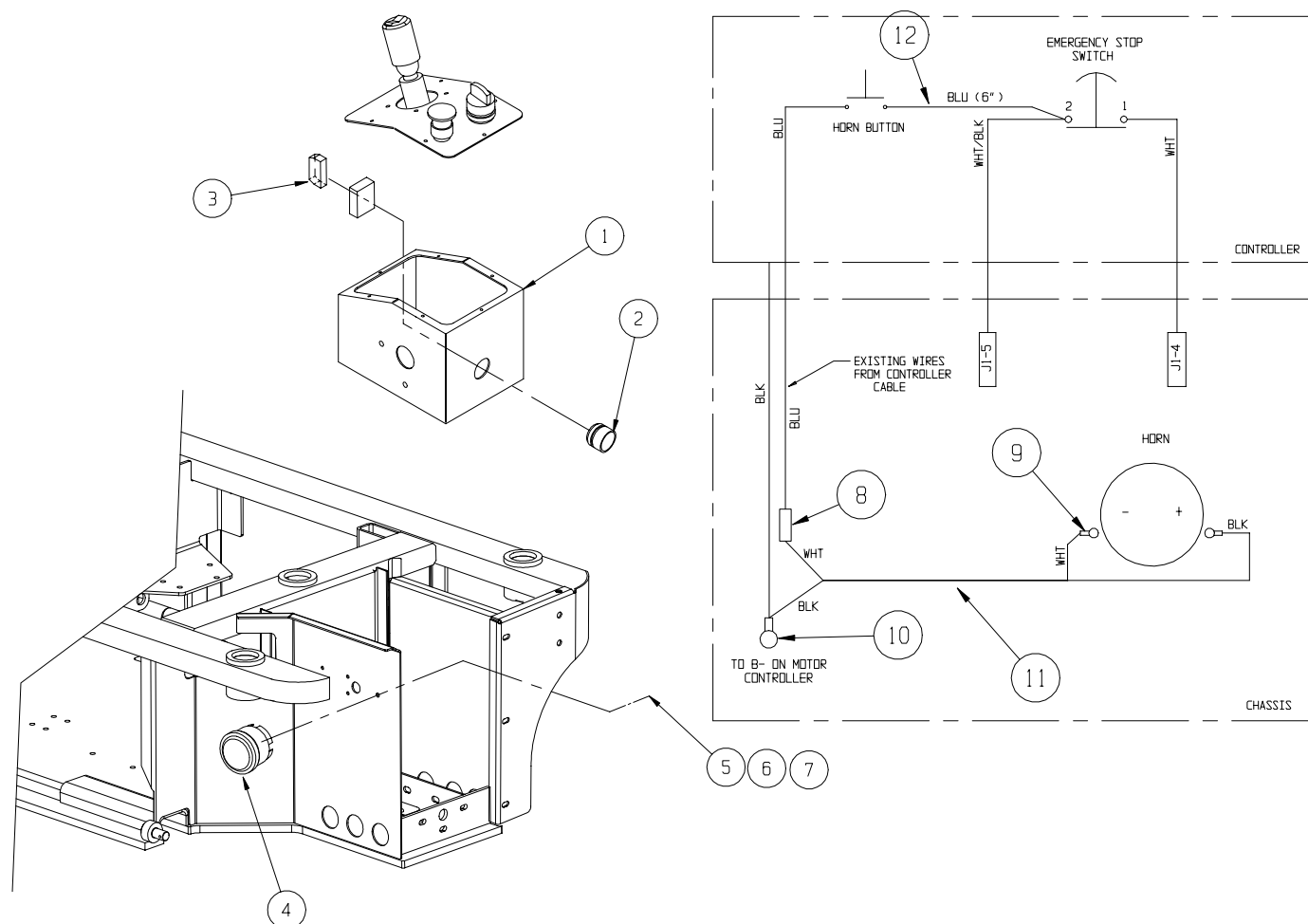


Horn W/Pushbutton Option

107031-000

ITEM	PART NUMBER	DESCRIPTION	QTY
1	107010-000	CONTROLLER ASSY	REF
2	066805-018	SWITCH, PUSH BUTTON GE	1
3	066805-010	CONTACT BLOCK, NO	1
4	066807-003	HORN, 24 VDC	1
5	011252-006	SCREW HHC 1/4-20 X 3/4	1
6	011240-004	WASHER, 1/4 DIA STD FLAT	1

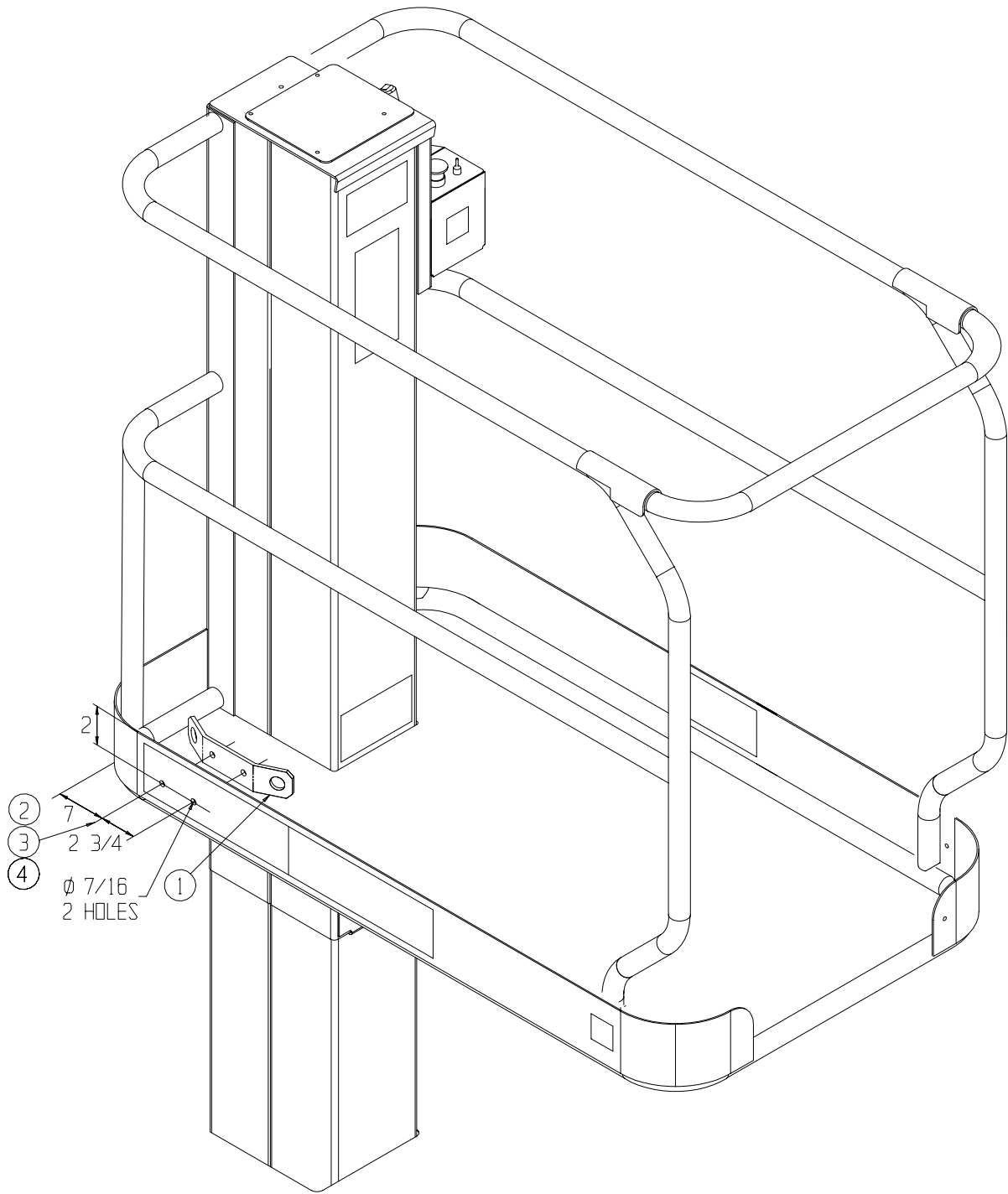
ITEM	PART NUMBER	DESCRIPTION	QTY
7	011238-004	WASHER, 1/4 SPLIT LOCK	1
8	029620-002	CONN BUTT 16-14	1
9	029601-011	CONN RING 16-14 GA #6	2
10	029601-014	CONN RING 16-14 GA 1/4"	1
11	029496-099	WIRE, 16 AWG 2 COND FT	6
12	029453-099	WIRE, 16 AWG BLU FT	.5



Lanyard Option

030793-000

ITEM	PART NUMBER	DESCRIPTION	QTY
1	030712-010	ANCHORAGE	1
2	011254-006	HHCS GR 5 3/8-16 X 3/4	2
3	011240-006	WASHER 3/8	2
4	011248-006	NUT HEX ESNA 3/8-16	2



UpRight

Call Toll Free in U.S.A.

1-800-926-LIFT

UpRight, Inc.

801 South Pine Street
Madera, California 93637

TEL: 559-662-3900

FAX: 559-673-6184

PARTS: 1-888-UR-PARTS

PARTS FAX: 1-800-669-9884

UpRight

Call Toll Free in U.S.A.

1-800-926-LIFT

107097-022R1

10-02

UpRight

Unit S1, Park West Industrial Park

Friel Avenue

Nangor Road

Dublin 12, Ireland

TEL: +353 1 620 9300

FAX: +353 1 620 9301