

Parts Manual

MX15 / MX19 Work Platform

Serial Numbers 20600 - Current

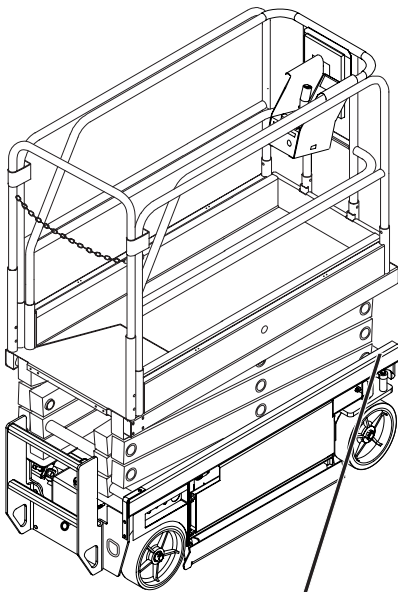
Publication Number: 113102-000

UpRight

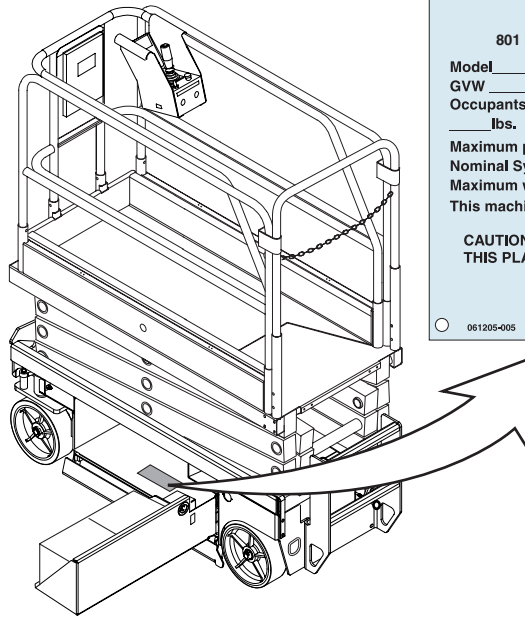
MX15 / MX19

Work Platform

When contacting UpRight for service or parts information, be sure to include the MODEL and SERIAL NUMBERS from the equipment nameplate. Should the nameplate be missing, the SERIAL NUMBER is also stamped on top of the chassis above the front axle pivot.



**Stamped Serial
Number**



UpRight Inc.	
801 S. PARK ST. MADERA CALIFORNIA 93737 USA	
Model _____	Serial number: _____
GVW _____ lbs.	Mfg. date: _____
Occupants and equipment must not exceed the rated workload _____ lbs. Rated number of occupants: _____	
Maximum platform height: _____ ft.	
Nominal System Voltage: _____ vdc	
Maximum wheel and/or outrigger load: _____ lbs.	
This machine is manufactured to comply with ANSI A92.6-1999.	
CAUTION: CONSULT OPERATOR'S MANUAL BEFORE USE. THIS PLATFORM IS NOT ELECTRICALLY INSULATED.	
061205-005	

UpRight, Inc.

801 South Pine Street
Madera, California 93637

TEL: 559-662-3900

FAX: 559-673-6184

PARTS: 1-888-UR-PARTS

PARTS FAX: 1-800-669-9884

UpRight

Call Toll Free in U.S.A.

1-800-926-LIFT

UpRight

Unit S1, Park West Industrial Park

Friel Avenue

Nangor Road

Dublin 12, Ireland

TEL: +353 1 620 9300

FAX: +353 1 620 9301

PARTS MANUAL

This document lists and illustrates the replaceable assemblies and parts of this product, as manufactured by UpRight, Inc. Each parts list contains the component parts for that assembly.

TABLE OF CONTENTS

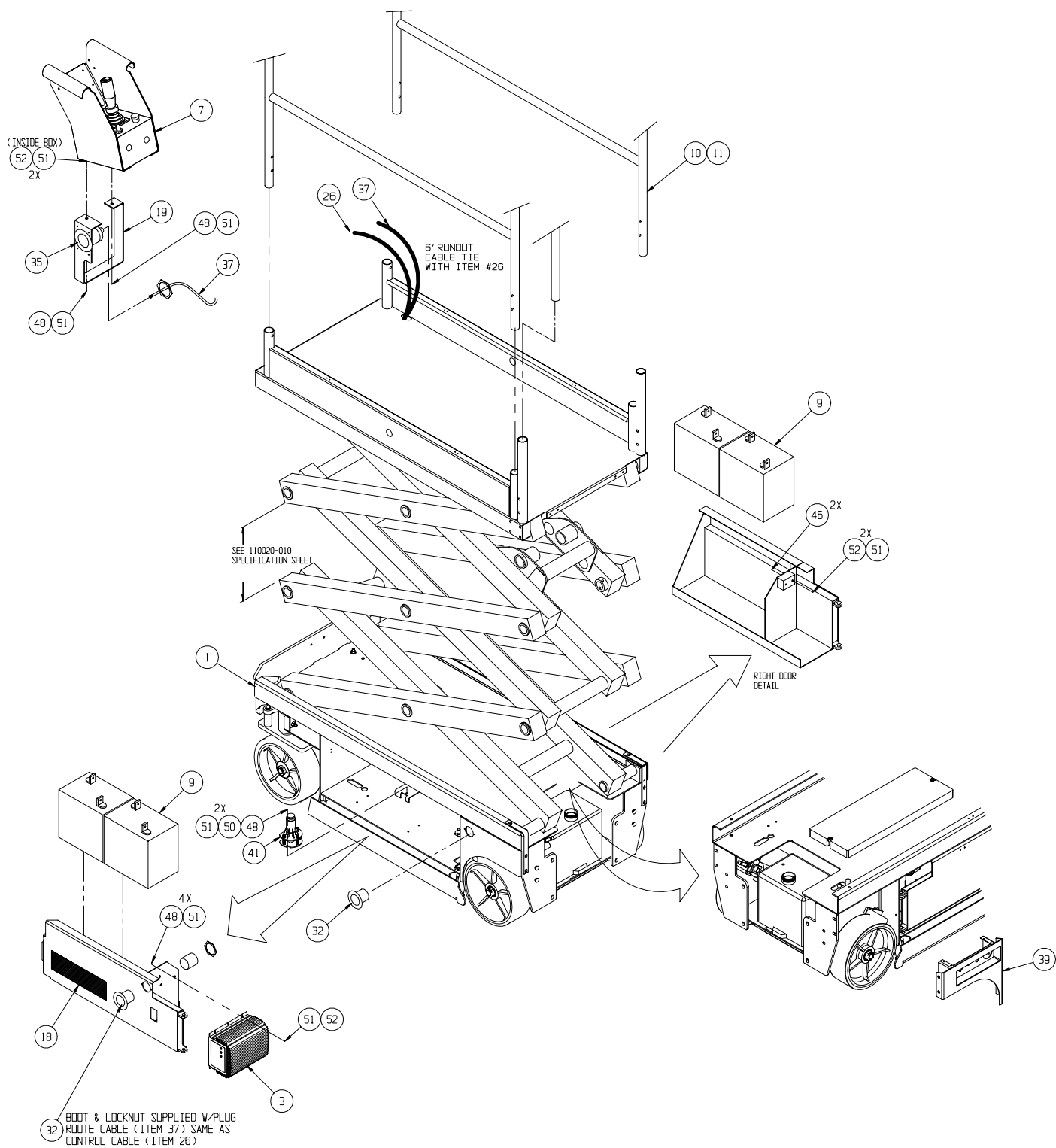
Final Assembly - MX15		Chassis Assembly	
113000-000	2	113002-000	26
Final Assembly - MX19		Hose Kit Installation	
113010-000	4	113006-000	30
Final Assembly Wiring - MX15		Hydraulic Tank Assembly	
065606-000	6	101152-001	31
Final Assembly Wiring - MX19		Valve Block	
065606-001	8	101120-122	32
Controller Assembly		Valve Block Assembly	
066013-018	10	113052-000	34
PQ Controller		Power Unit Assembly	
065512-000	12	113055-000	35
Lower Controls (Wheel Cover Assembly)		Drive Motor Assembly	
065980-004	13	113065-000	36
Basic Assembly - MX15		Steering Cylinder Assembly	
113001-000	14	113051-000	37
Basic Assembly - MX19		Depression Cylinder Assembly	
113011-000	16	113053-000	38
Scissor Arm Assembly - MX15		Horn Assembly Option	
065605-020	18	066614-020	39
Scissor Arm Assembly - MX19		Hour Meter/Low Voltage Indicator Option	
065705-020	20	066613-020	40
Platform Guardrail Installation		Removable Controller Option	
065603-004	22	061898-001	41
Deck Extension Assembly		Label Installation - MX15	
065614-000	23	065612-033	42
Proximity Switch Assembly		Label Installation - MX19	
067193-001	24	065712-033	42

Final Assembly - MX15

113000-000

ITEM	PART	DESCRIPTION	QTY
1	113001-000	BASIC ASSY	1
2	065606-000	FINAL ASSY WIRING - MX15	1
3	069199-000	CHARGER	1
7	066013-018	CONTROLLER ASSEMBLY	1
9	015796-000	BATTERY 6 V	4
10	065614-000	EXTENSION DECK	1
11	065603-004	PLATFORM/GUARDRAIL ASSY	1
14	113006-000	HOSE KIT / INST.	1
15	113007-000	HYDRAULIC SCHEMATIC	REF
16	065616-026	ELECTRICAL SCHEMATIC	REF
17	110020-010	MX SPECIFICATION SHEET	REF
18	065612-033	LABEL KIT / INSTALLATION	1
19	065746-002	CONTROLLER GUIDE-WIDE	1
20	060540-001	DOCUMENTATION KIT	1
21	113101-000	SERVICE MANUAL	1
22	113102-000	PARTS MANUAL	1

ITEM	PART	DESCRIPTION	QTY
23	113100-000	USER MANUAL	1
26	065609-020	CONTROL CABLE ASSY	REF
32	067336-000	PLUG ASSY M 110Vac	2
35	067336-001	PLUG ASSY FM 110Vac	1
37	029495-099	WIRE AWG 14 GA 3 CONN.	37 FT.
39	065980-004	WHEEL COVER ASSY	1
41	029945-030	LEVEL SENSOR ASSY	1
46	011252-012	SCREW HHCS 1/4-20 X 1 1/2	2
48	011252-006	SCREW HHC 1/4-20UNC X 3/4	8
50	011238-004	WASHER 1/4 LOCK	2
51	011240-004	WASHER 1/4 STD FLAT	12
52	011248-004	NUT HEX ESNA 1/4-20UNC	8
53	115032-000	WELDMENT KIT - CHASSIS	1
54	115033-000	WELDMENT KIT - LINKAGE	1
55	115034-000	WELDMENT KIT - PLATFORM	1

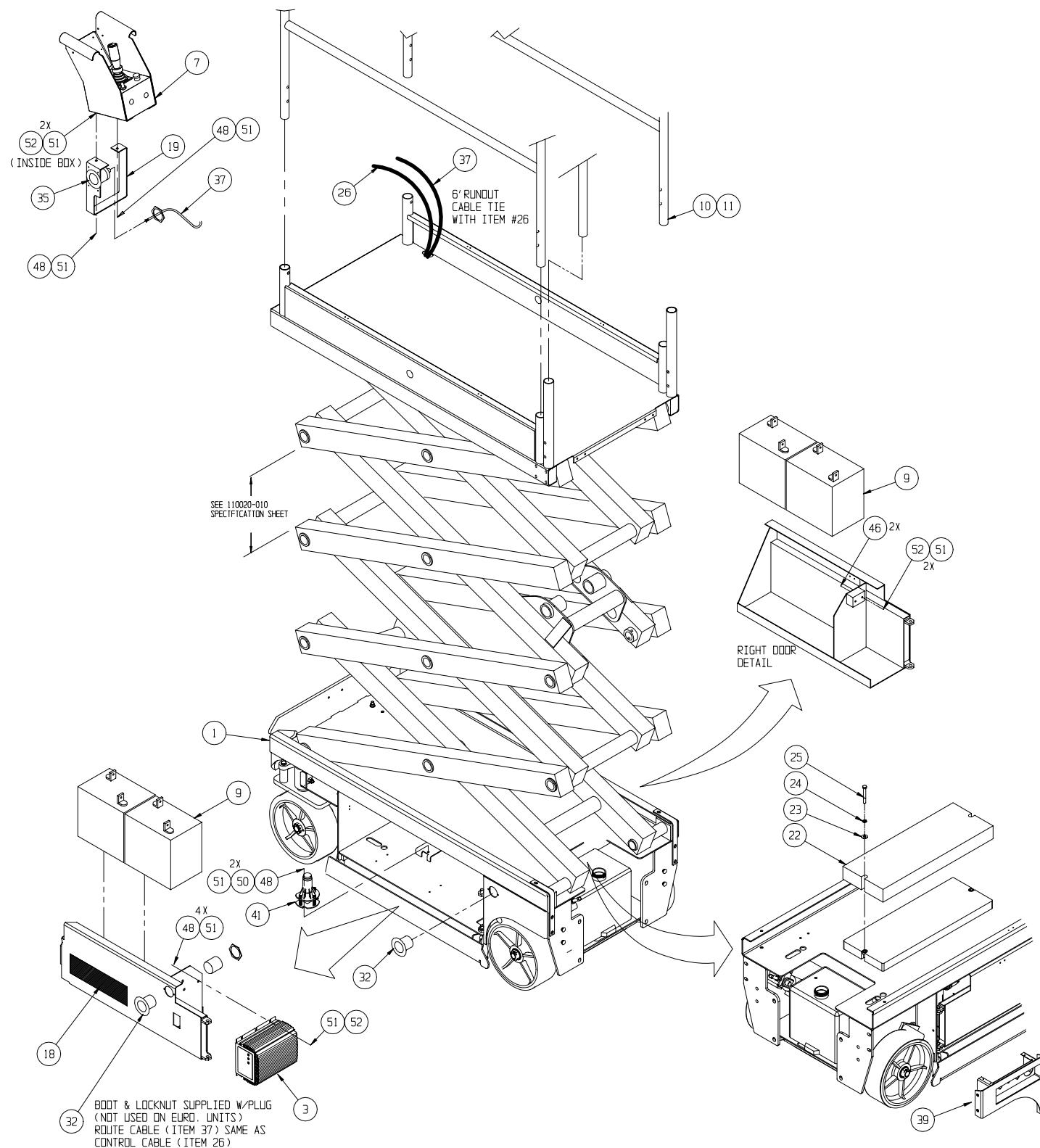


Final Assembly - MX19

113010-000

ITEM	PART	DESCRIPTION	QTY	ITEM	PART	DESCRIPTION	QTY
1	113011-000	BASIC ASSY	1	25	011254-024	SCREW - 3/8-16 UNC X 3	2
2	065606-001	FINAL ASSY WIRING	1	26	065609-021	CONTROL CABLE ASSY	REF
3	069199-000	CHARGER	1	27	113102-000	PARTS MANUAL	1
7	066013-018	CONTROLLER ASSEMBLY	1	28	113100-000	USER MANUAL	1
9	015796-000	BATTERY 6 V	4	32	067336-000	PLUG ASSY M 110Vac	2
10	065614-000	EXTENSION DECK	1	35	067336-001	PLUG ASSY FM 110Vac	1
11	065603-004	PLATFORM/GUARDRAIL ASSY	1	37	029495-099	WIRE AWG 14 GA 3 CONN.	37 FT.
14	113006-000	HOSE KIT / INST.	1	39	065980-004	WHEEL COVER ASSY	1
15	113007-000	HYDRAULIC SCHEMATIC	REF	41	029945-030	LEVEL SENSOR ASSY	1
16	065616-026	ELECTRICAL SCHEMATIC	REF	46	011252-012	SCREW HHCS 1/4-20 X 1 1/2	2
17	110020-010	MX SPECIFICATION SHEET	REF	48	011252-006	SCREW, 1/4-20UNC X 3/4	8
18	065712-033	LABEL KIT / INSTALLATION	1	50	011238-004	WASHER 1/4 LOCK	2
19	065746-002	CONTROLLER GUIDE-WIDE	1	51	011240-004	WASHER 1/4 STD FLAT	12
20	060540-001	DOCUMENTATION KIT	1	52	011248-004	NUT HEX ESNA 1/4-20UNC	8
21	113101-000	SERVICE MANUAL	1	53	115032-000	WELDMENT KIT - CHASSIS	1
‡22	065963-002	COUNTERWEIGHT - UPPER	1	54	115033-001	WELDMENT KIT - LINKAGE	1
23	011240-006	WASHER - 3/8 STD. FLAT	2	55	115034-000	WELDMENT KIT - PLATFORM	1
24	011238-006	LOCKWASHER - 3/8 SPLIT RING	2				

‡ Reference Only - components included in paint kit.

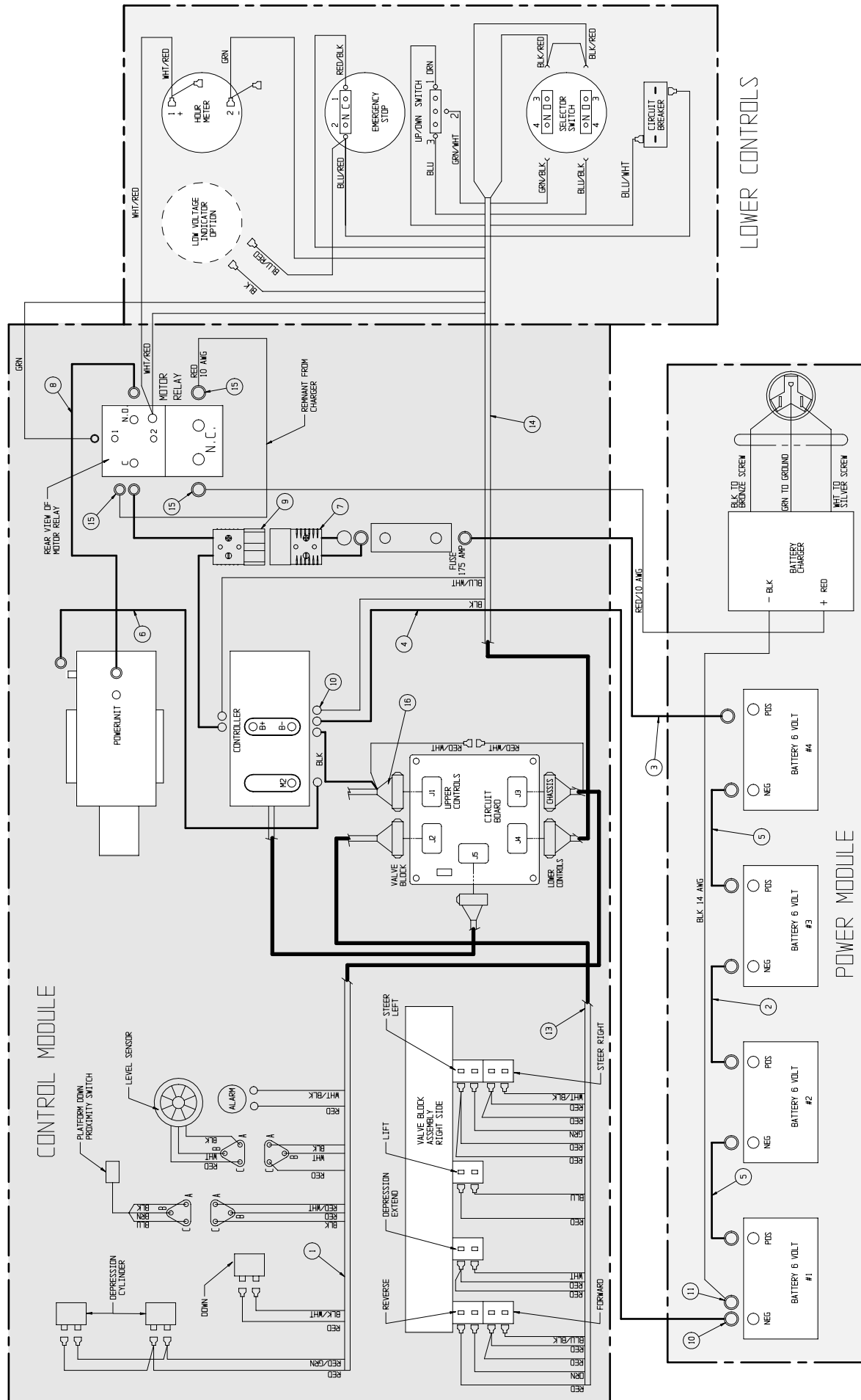


Final Assembly Wiring - MX15

065606-000

ITEM	PART	DESCRIPTION	QTY
1	065943-004	WIRE HARNESS ASSY	1
2	062125-118	CABLE ASSY X 118	1
3	064195-022	CABLE ASSY X 22	1
4	064195-062	CABLE ASSY X 62	1
5	064195-015	CABLE ASSY X 15	2
6	062125-016	CABLE ASSY X 16	1
7	101182-001	CABLE ASSY W/CONNECTOR	1
8	062125-019	CABLE ASSY X 19	1

ITEM	PART	DESCRIPTION	QTY
9	101182-002	CABLE ASSY W/CONNECTOR	1
10	010154-001	COVER - BATTERY TERMINAL	10
11	029601-039	CONN. RING 5/16 10-12	3
13	065942-003	CABLE ASSY - VALVE BLOCK	1
14	067340-001	WIRE ASSY - LOWER CONTROLS	1
15	029601-021	CONN. RING 3/8 10-12	3
16	065609-020	CONTROL CABLE ASSY - MX15	1

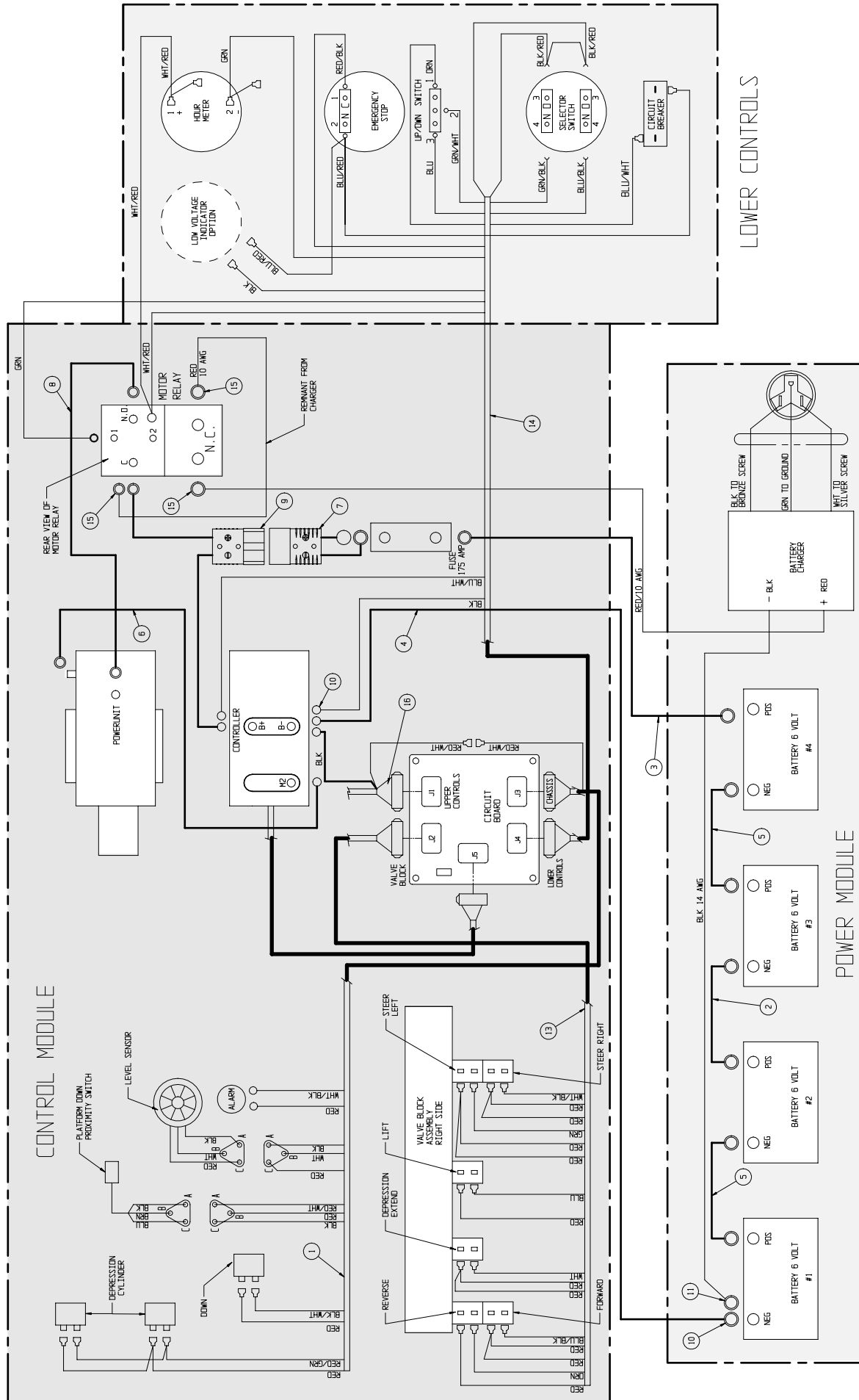


Final Assembly Wiring - MX19

065606-001

ITEM	PART	DESCRIPTION	QTY
1	065943-004	WIRE HARNESS ASSY	1
2	062125-118	CABLE ASSY X 118	1
3	064195-022	CABLE ASSY X 22	1
4	064195-062	CABLE ASSY X 62	1
5	064195-015	CABLE ASSY X 15	2
6	062125-016	CABLE ASSY X 16	1
7	101182-001	CABLE ASSY W/CONNECTOR	1
8	062125-019	CABLE ASSY X 19	1

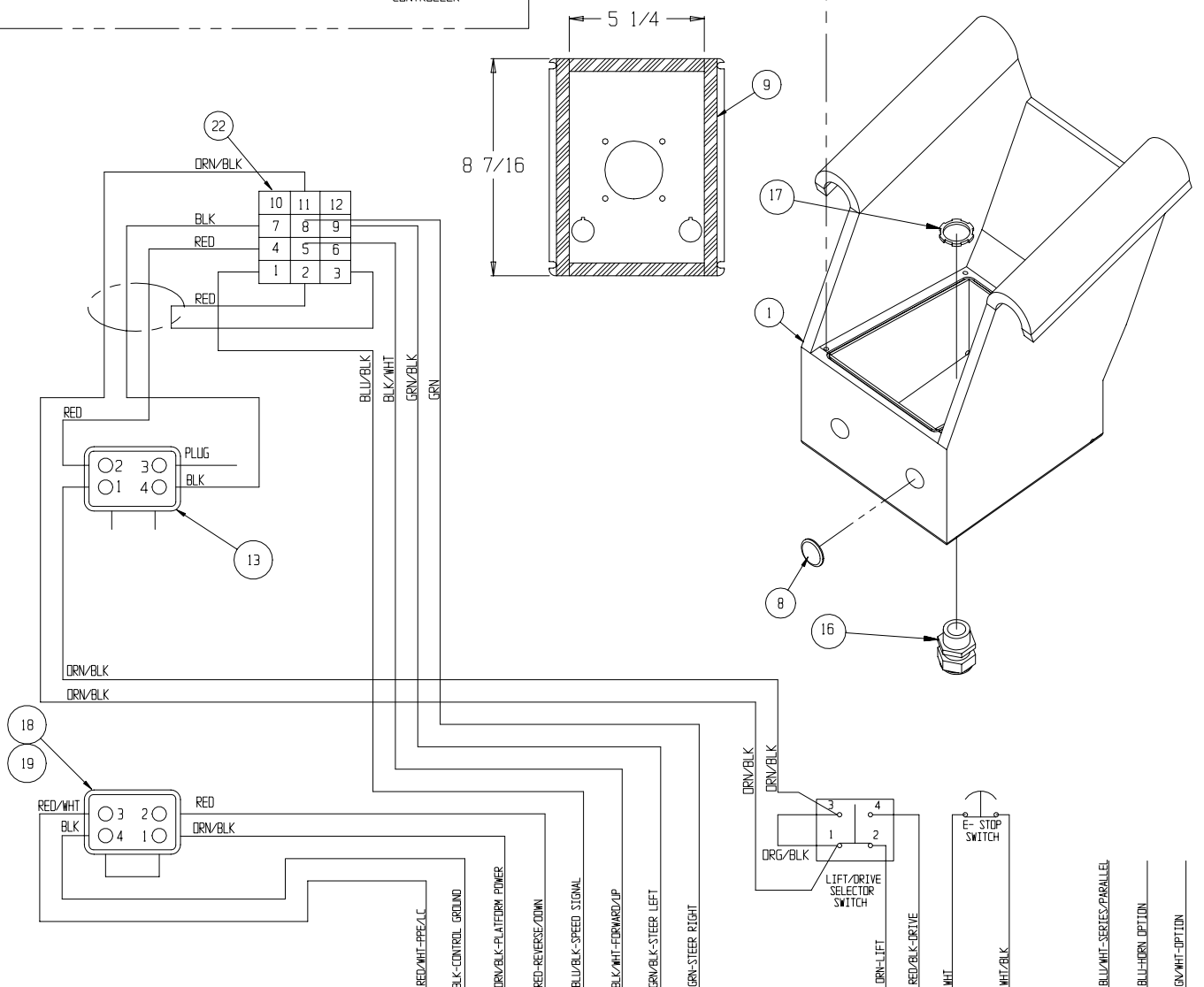
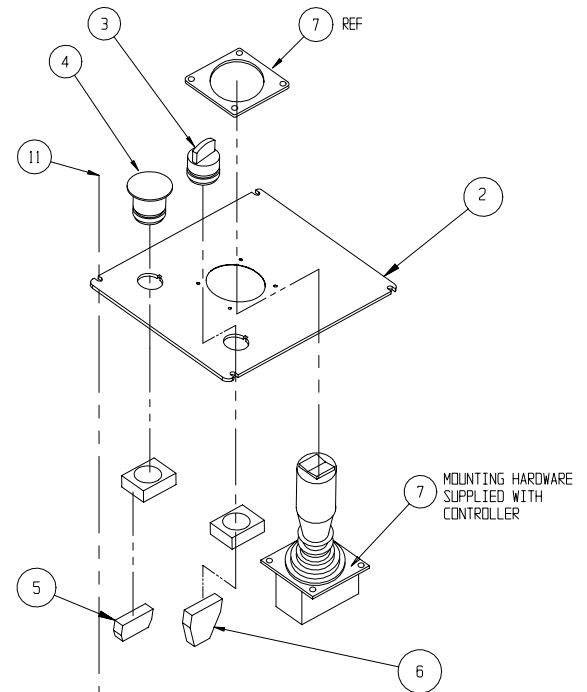
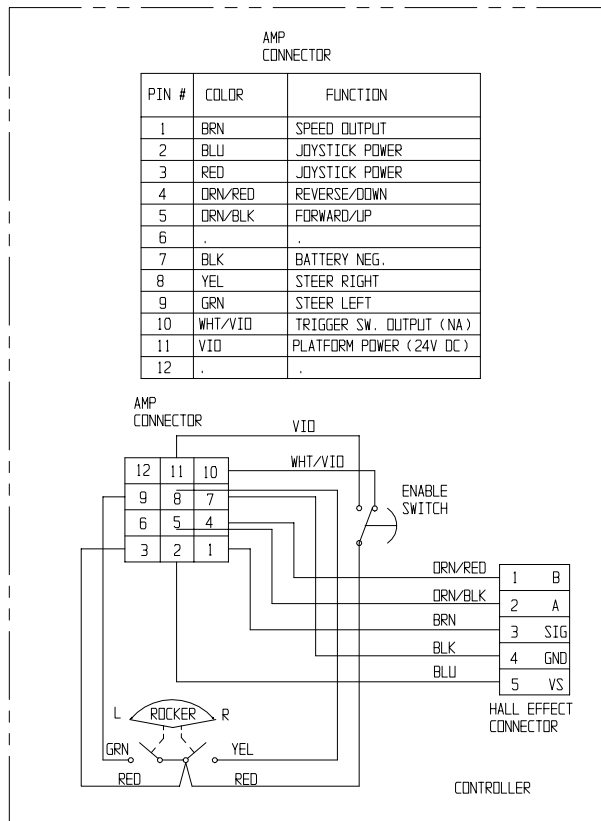
ITEM	PART	DESCRIPTION	QTY
9	101182-002	CABLE ASSY W/CONNECTOR	1
10	010154-001	COVER - BATTERY TERMINAL	10
11	029601-039	CONN. RING 5/16 10-12	3
13	065942-003	CABLE ASSY - VALVE BLOCK	1
14	067340-001	WIRE ASSY - LOWER CONTROLS	1
15	029601-021	CONN. RING 3/8 10-12	3
16	065609-021	CONTROL CABLE ASSY - MX19	1



Controller Assembly

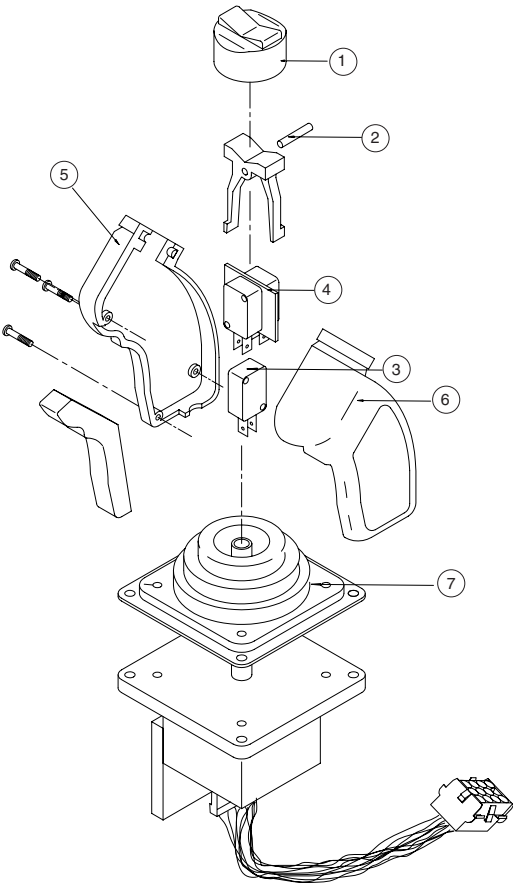
066013-018

ITEM	PART	DESCRIPTION	QTY
1	101188-010	BOX CONTROLLER	1
2	101223-003	COVER CONTROLLER	1
3	066805-002	SWITCH SELECTOR-2 POSITION	1
4	066805-006	SWITCH PUSH BUTTON	1
5	066805-011	CONTACT NC	1
6	066805-012	CONTACT NO - NC	1
7	065512-000	CONTROLLER PQ	1
8	063926-011	PLUG CAPLUG #CCF 1-14-20	2
9	068889-099	WEATHERSTRIP#CCF 1-14-20	2.3 FT.
11	011761-004	SCREW MACH SLOTTED TRUSS HD #10-24 X 1/2	4
13	101240-000	CABLE ASSY CONTROLLER	1
16	029925-010	CONN CABLE	1
17	029939-003	LOCKNUT 3/4	1
18	067990-020	4 PIN RECEPTACLE	1
19	067990-023	4 PIN WEDGE	1
22	063956-003	CONN 12 PIN	1



PQ Controller
065512-000

ITEM	PART NO.	DESCRIPTION	QTY
1	063953-001	CAP, RUBBER	1
2	065512-013	ROCKER, PIN	1
3	063953-007	SWITCH, INTERLOCK	1
4	065512-015	SWITCH, STEERING	1
5	065512-016	HANDLE HALF, RIGHT	1
6	065512-017	HANDLE HALF, LEFT	1
7	065512-018	BOOT, HANDLE	1

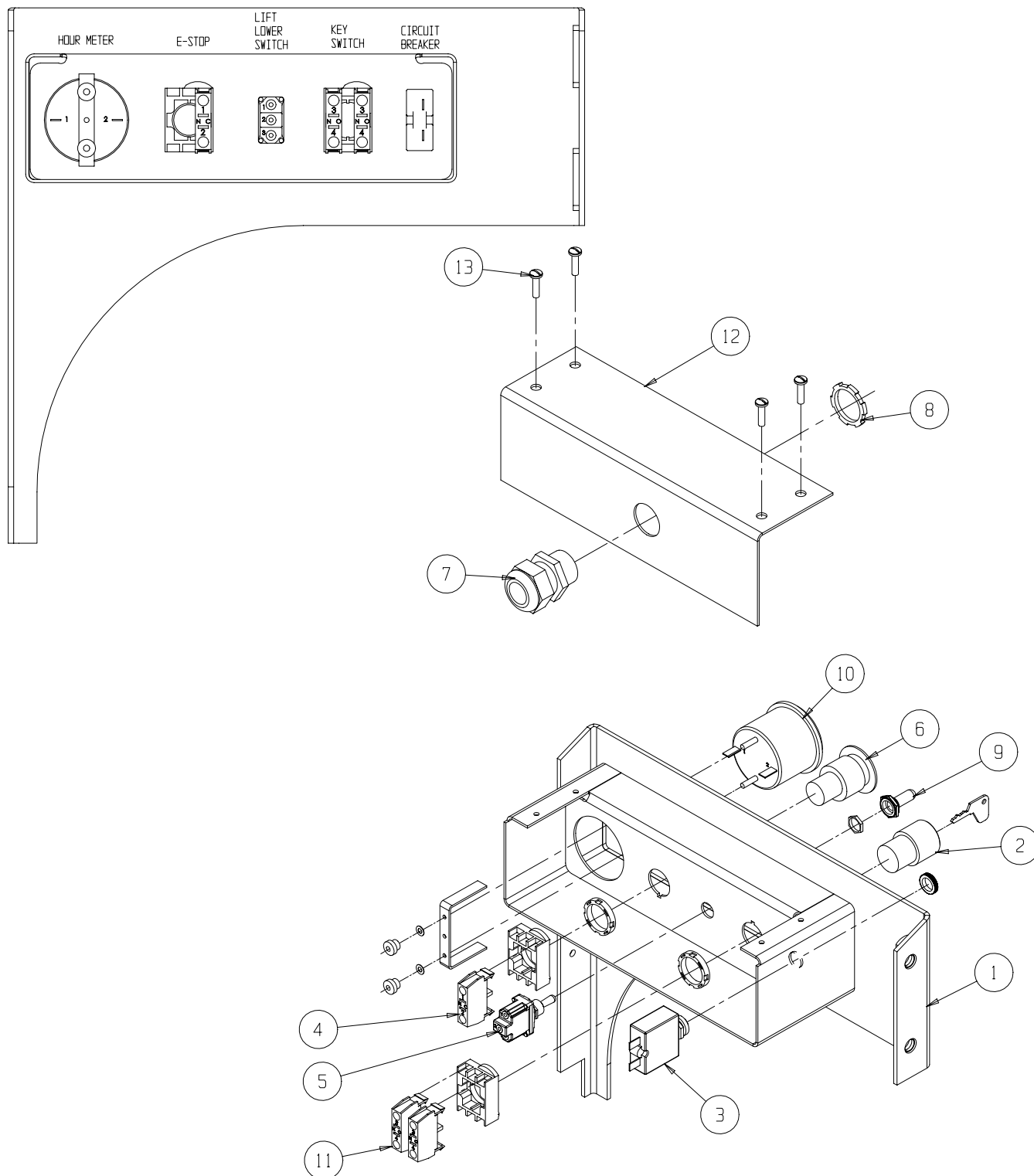


Lower Controls (Wheel Cover Assembly)

065980-004

ITEM	PART NO.	DESCRIPTION	QTY
1	065979-001	WHEEL COVER WELDMENT	1
2	066805-004	KEYSWITCH	1
3	068582-005	CIRCUIT BREAKER	1
4	066805-011	SWITCH CONTACT BLOCK	1
5	012798-000	SWITCH TOGGLE	1
6	066805-006	SWITCH HEAD MUSHROOM	1
7	029925-010	CONNECTOR CABLE	1

ITEM	PART NO.	DESCRIPTION	QTY
8	029939-003	LOCKNUT 3/4 NPT	1
9	029872-000	BOOT SWITCH COVER	1
10	015752-000	HOURLMETER	1
11	066805-010	SWITCH CONTACT N.O.	2
12	065978-000	COVER	1
13	011811-006	SCREW SLFTP F HWH 10-32 X 3/4	4



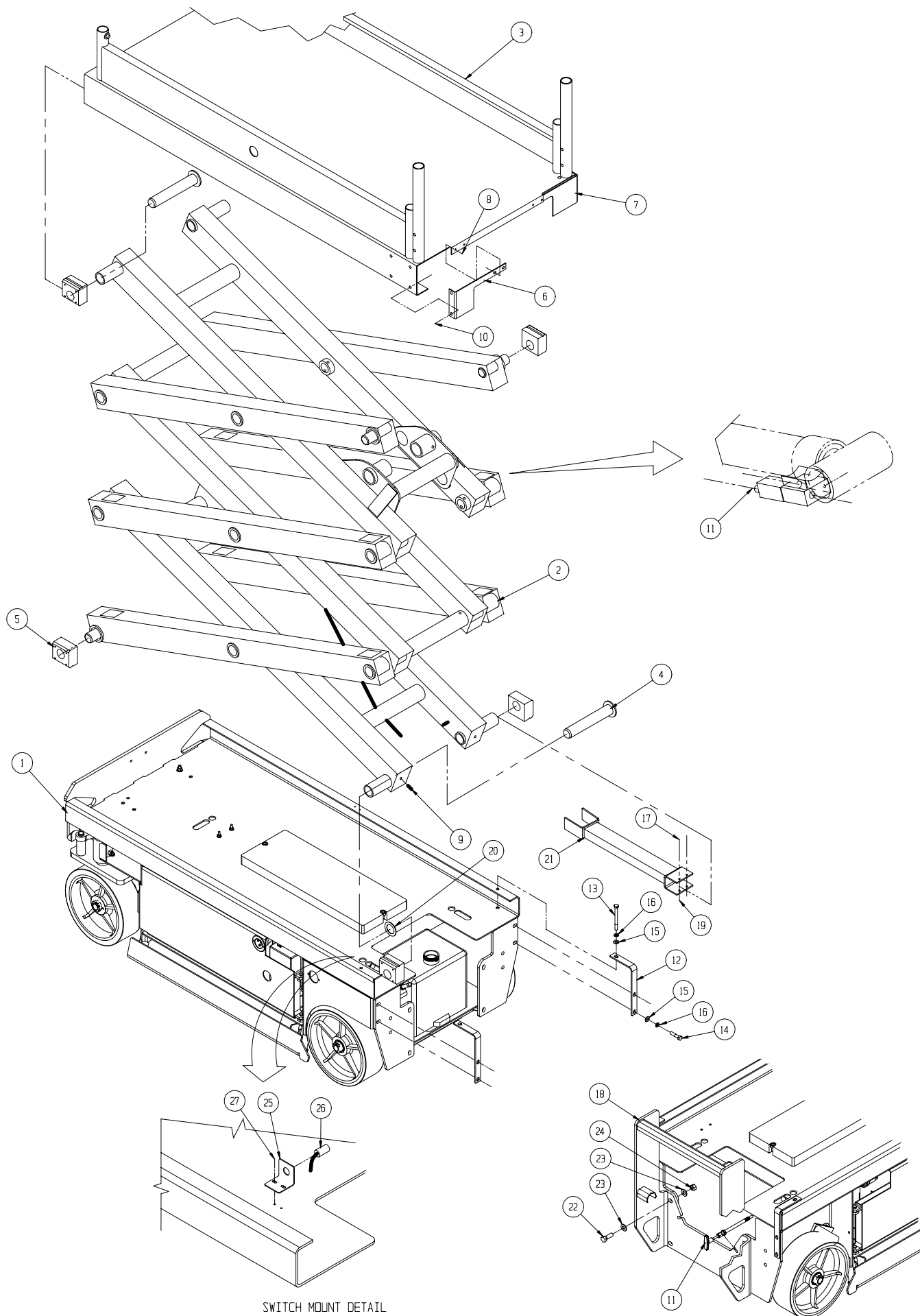
Basic Assembly - MX15

113001-000

ITEM	PART	DESCRIPTION	QTY	ITEM	PART	DESCRIPTION	QTY
1	113002-000	CHASSIS ASS'Y	1	15	011240-006	WASHER 3/8 STD FLAT	4
2	065605-020	SCISSOR ARM ASS'Y- X15	1	16	011238-006	LOCK WASHER - 3/8" SPLIT RING	6
†3	066250-001	PLATFORM WELDMENT	1	17	011829-022	CARRIAGE BOLT 1/4-20 X 2-3/4 PLATED	2
4	065698-000	LOWER PIVOT PIN WELDMENT	4	†18	066307-006	LADDER WELDMENT - MX15	1
5	065726-000	SLIDE PAD	8	19	011248-004	LOCKNUT 1/4-20 UNC ESNA	2
‡6	065728-000	DECK BRACKET L.H.	1	20	011786-007	BUSHING - MACHINERY	2
‡7	065727-000	DECK BRACKET R.H.	1	†21	065764-000	SCISSOR CHOCK WELDMENT X15/19	1
8	014027-006	SCREW HHD SLFTP 1/4-28 x 3/4	4	22	011256-012	SCREW HHC 1/2-13UNC X 1 1/2	4
9	011739-020	ROLLPIN 3/8 DIA. x 2 1/2	4	23	011240-008	WASHER 1/2 STD FLAT	8
10	014066-008	SCREW SLFTP 1/4-AB x 1	16	24	011248-008	LOCKNUT 1/2-13 UNC ESNA	4
11	065754-006	EMERGENCY LOWERING CABLE	1	‡25	067318-000	SWITCH BRACKET	1
†12	065937-001	BEARING RETENTION ANGLE	2	26	067193-001	SWITCH ASSY	1
13	011254-034	SCREW HHC 3/8-16UNC X 4 1/4	2	27	011252-006	SCREW - 1/4-20 UNC X 3/4	2
14	011254-014	SCREW HHC 3/8-16UNC X 1 3/4	4				

† Reference Only - components included in weldment kit.

‡ Reference Only - components included in paint kit.



SWITCH MOUNT DETAIL

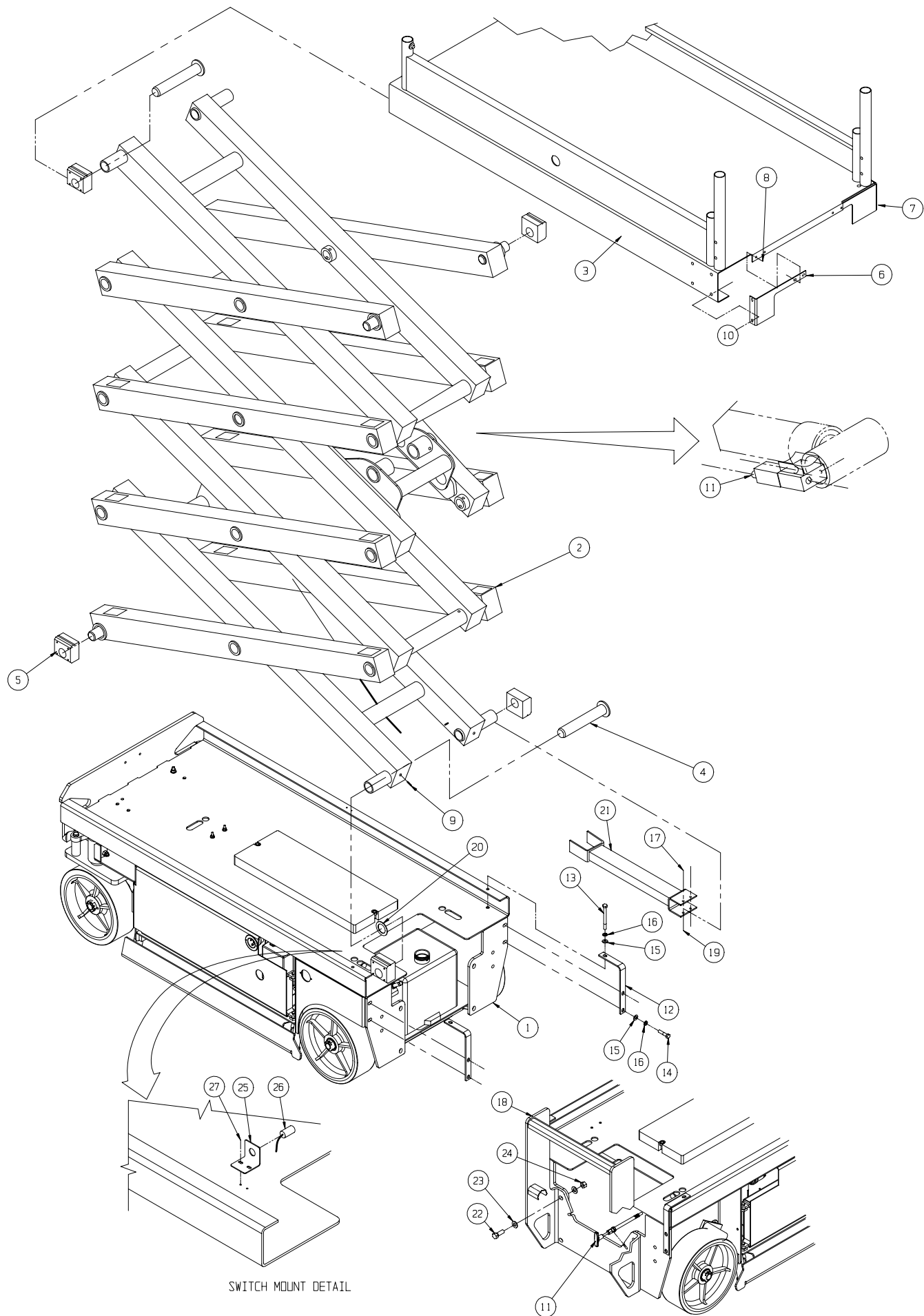
Basic Assembly - MX19

113011-000

ITEM	PART	DESCRIPTION	QTY	ITEM	PART	DESCRIPTION	QTY
1	113002-000	CHASSIS ASS'Y	1	15	011240-006	WASHER 3/8 STD FLAT	4
2	065705-020	SCISSOR ARM ASS'Y X19	1	16	011238-006	LOCK WASHER - 3/8" SPLIT RING	6
†3	066250-001	PLATFORM WELDMENT	1	17	011829-022	CARRIAGE BOLT 1/4-20 X 2-3/4 PLATED	2
4	065698-000	LOWER PIVOT PIN WELDMENT	4	†18	066307-005	LADDER WELDMENT	1
5	065726-000	SLIDE PAD	8	19	011248-004	LOCKNUT 1/4-20 UNC ESNA	2
‡6	065728-000	DECK BRACKET L.H.	1	20	011786-007	BUSHING - MACHINERY	2
‡7	065727-000	DECK BRACKET R.H.	1	†21	065764-000	SCISSOR CHOCK WELDMENT X15/19	1
8	014027-006	SCREW HHD SLFTP 1/4-28 x 3/4	4	22	011256-012	SCREW HHC 1/2-13UNC X 1 1/2	4
9	011739-020	ROLLPIN 3/8 DIA. x 2 1/2	4	23	011240-008	WASHER 1/2 STD FLAT	8
10	014066-008	SCREW SLFTP 1/4-AB x 1	16	24	011248-008	LOCKNUT 1/2-13 UNC ESNA	4
11	065754-006	EMERGENCY LOWERING CABLE	1	‡25	067318-000	SWITCH BRACKET	1
†12	065937-001	BEARING RETENTION ANGLE	2	26	067193-001	SWITCH ASSY	1
13	011254-034	SCREW HHC 3/8-16UNC X 4 1/4	2	27	011252-006	SCREW - 1/4-20 UNC X 3/4	2
14	011254-014	SCREW HHC 3/8-16UNC X 1 3/4	4				

† Reference Only - components included in weldment kit.

‡ Reference Only - components included in paint kit.






Scissor Arm Assembly - MX15

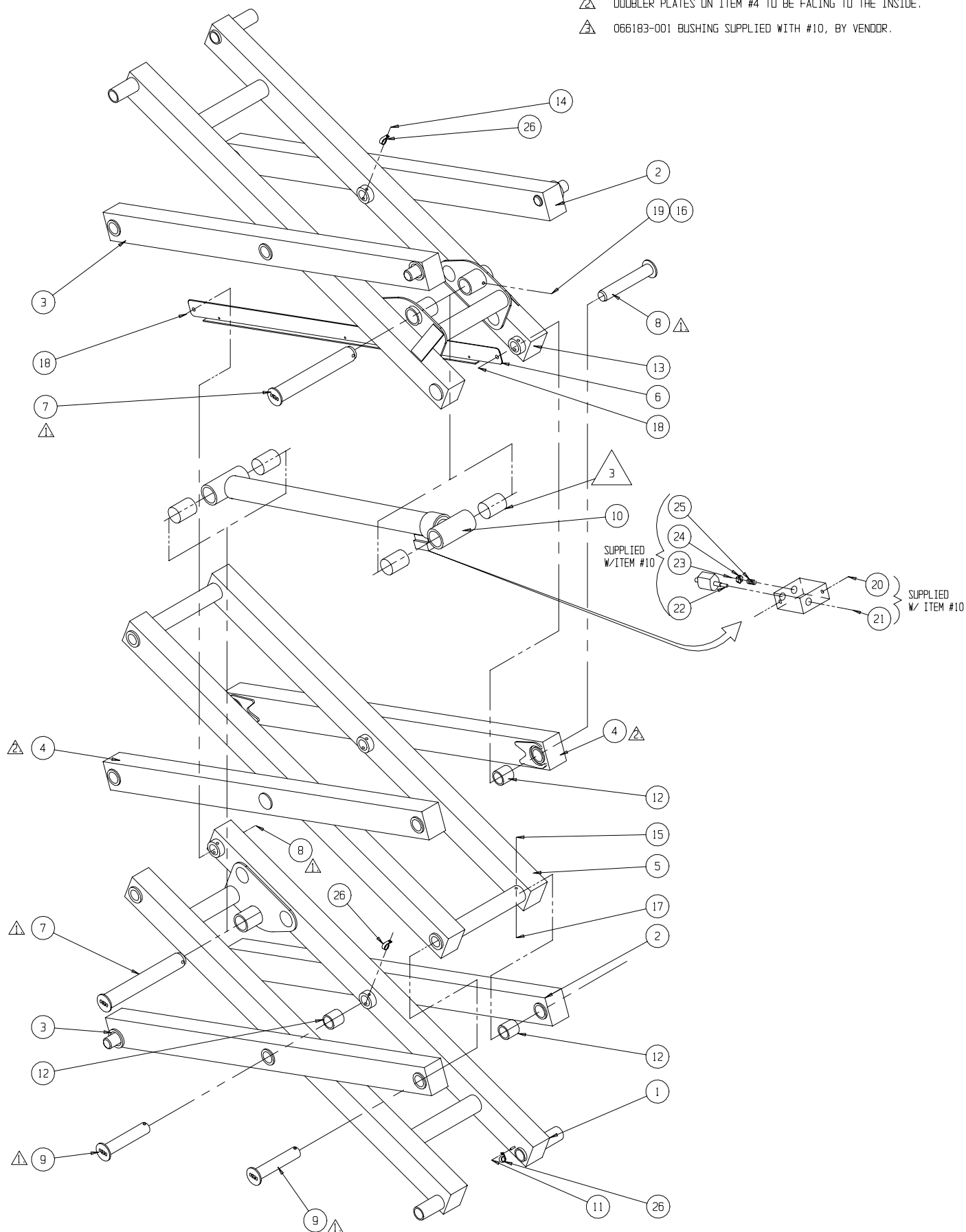
065605-020

ITEM	PART	DESCRIPTION	QTY	ITEM	PART	DESCRIPTION	QTY
†1	065640-000	INNER ARM WELDMENT	1	14	011253-024	SCREW 5/16-18UNC HHC X 3	3
†2	065671-000	OUTER BEAM EWLDMENT R.H.	2	15	011253-022	SCREW 5/16-18UNC HHC X 2 3/4	11
†3	065672-000	OUTER BEAM WELDMENT L.H.	2	16	011254-026	SCREW 3/8-16UNC HHC X 3 1/4	2
†4	065675-001	OUTER BEAM WELDMENT	2	17	011248-005	LOCKNUT 5/16-18UNC HEX	14
†5	065677-000	INNER CENTER BEAM WELDMENT	1	19	065688-000	GUARD RIVET	2
‡6	065687-000	CABLE GUIDE	1	21	011248-006	LOCKNUT 3/8-16UNC HEX	2
7	065696-000	CYLINDER PIN WELDMENT	2	22	012004-004	PLUG #4	REF
8	065697-000	PIN KEEPER WELDMENT	2	23	012004-006	PLUG #6	REF
9	065920-000	PIVOT PIN WELDMENT	12	25	066179-000	VALVE	REF
10	065372-021	LIFT CYLINDER ASSY.	1	26	011941-005	FITTING 6MB-6MJ ST	REF
*	065372-012	SEAL KIT, LIFT CYLINDER	REF	27	015919-001	ORIFICE #840	REF
11	011248-004	LOCKNUT 1/4-20UNC HEX	1	28	05133-000	SPRING	REF
12	066183-002	BUSHING	14	29	013919-009	CLAMP	3
†13	065640-001	INNER ARM WELDMENT	1				

† Reference Only - components included in weldment kit.

‡ Reference Only - components included in paint kit.

- NOTES:  COAT PINS ⑦ ⑧ ⑨ WITH NEVER SIEZE BEFORE INSTALLING.
 DOUBLER PLATES ON ITEM #4 TO BE FACING TO THE INSIDE.
 066183-001 BUSHING SUPPLIED WITH #10, BY VENDOR.



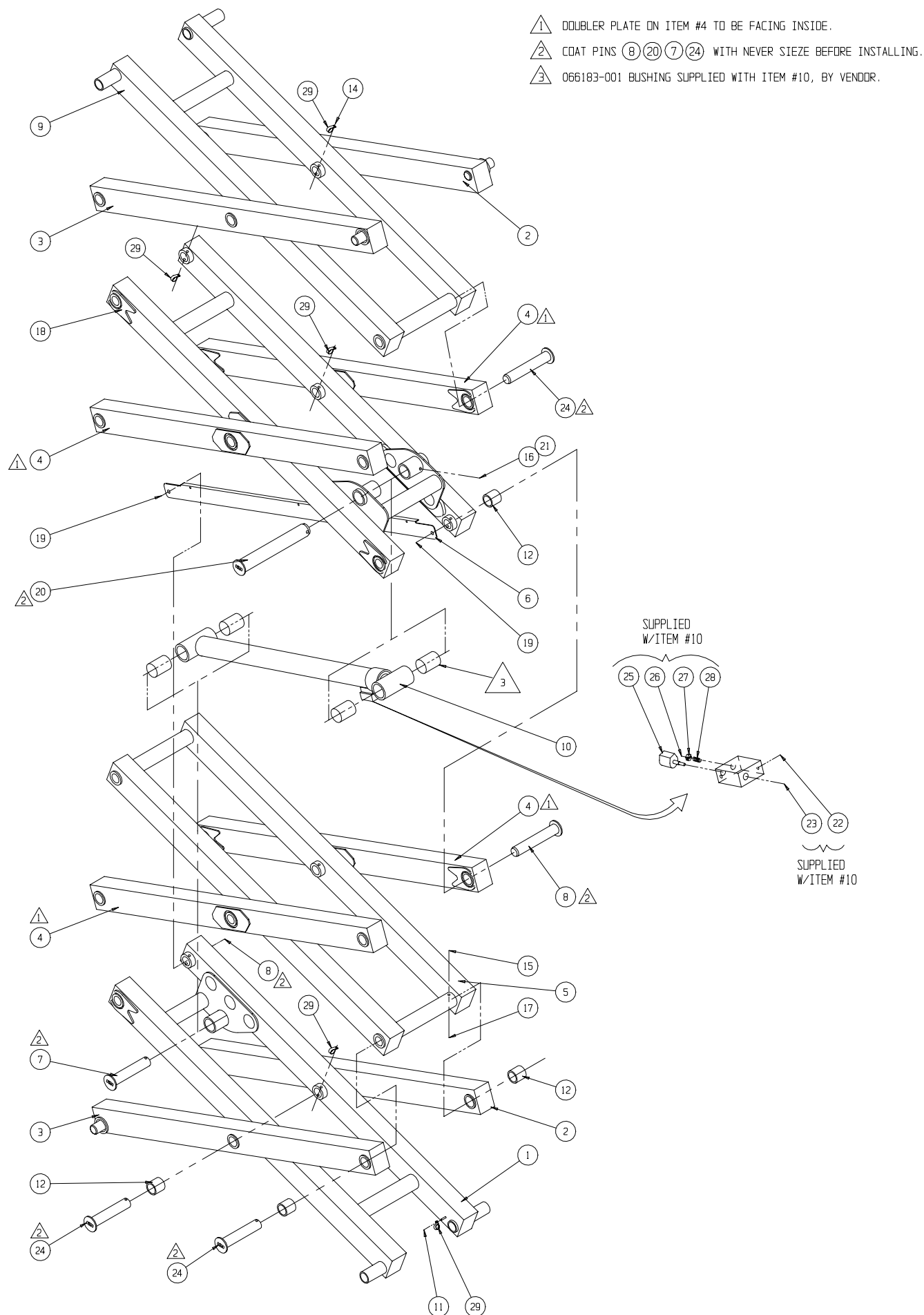
Scissor Arm Assembly - MX19

065705-020

ITEM	PART	DESCRIPTION	QTY	ITEM	PART	DESCRIPTION	QTY
†1	065640-001	INNER ARM WELDMENT	1	16	011254-026	SCREW 3/8-16UNC HHC X 3 1/4	2
†2	065671-000	OUTER BEAM WELDMENT R.H.	2	17	011248-005	LOCKNUT 5/16-18UNC HEX	20
†3	065672-000	OUTER BEAM WELDMENT L.H.	2	†18	065722-000	INNER BEAM WELDMENT	1
†4	065675-000	OUTER BEAM WELDMENT	4	19	065688-000	GUARD RIVET	2
†5	065677-000	INNER CENTER BEAM WELDMENT	1	20	065750-000	CYLINDER PIN WELDMENT	1
‡6	065687-000	CABLE GUIDE	1	21	011248-006	LOCKNUT 3/8-16UNC HEX	2
7	065696-000	CYLINDER PIN WELDMENT	1	22	012004-004	PLUG #4	REF
8	065697-000	PIN KEEPER WELDMENT	2	23	012004-006	PLUG #6	REF
†9	065721-000	UPPER BEAM WELDMENT	1	24	065920-000	PIVOT PIN WELDMENT	18
10	065372-021	LIFT CYLINDER ASSY.	1	25	066179-000	VALVE	REF
*	065372-012	SEAL KIT, LIFT CYLINDER	REF	26	011941-005	FITTING 6MB-6MJ ST	REF
11	011248-004	LOCKNUT 1/4-20UNC HEX	1	27	015919-001	ORIFICE	REF
12	066183-002	BUSHING	20	28	05133-000	SPRING	REF
14	011253-024	SCREW 5/16-18UNC HHC X 3	4	29	013919-009	CLAMP	4
15	011253-022	SCREW 5/16-18UNC HHC X 2 3/4	16				

† Reference Only - components included in weldment kit.

‡ Reference Only - components included in paint kit.

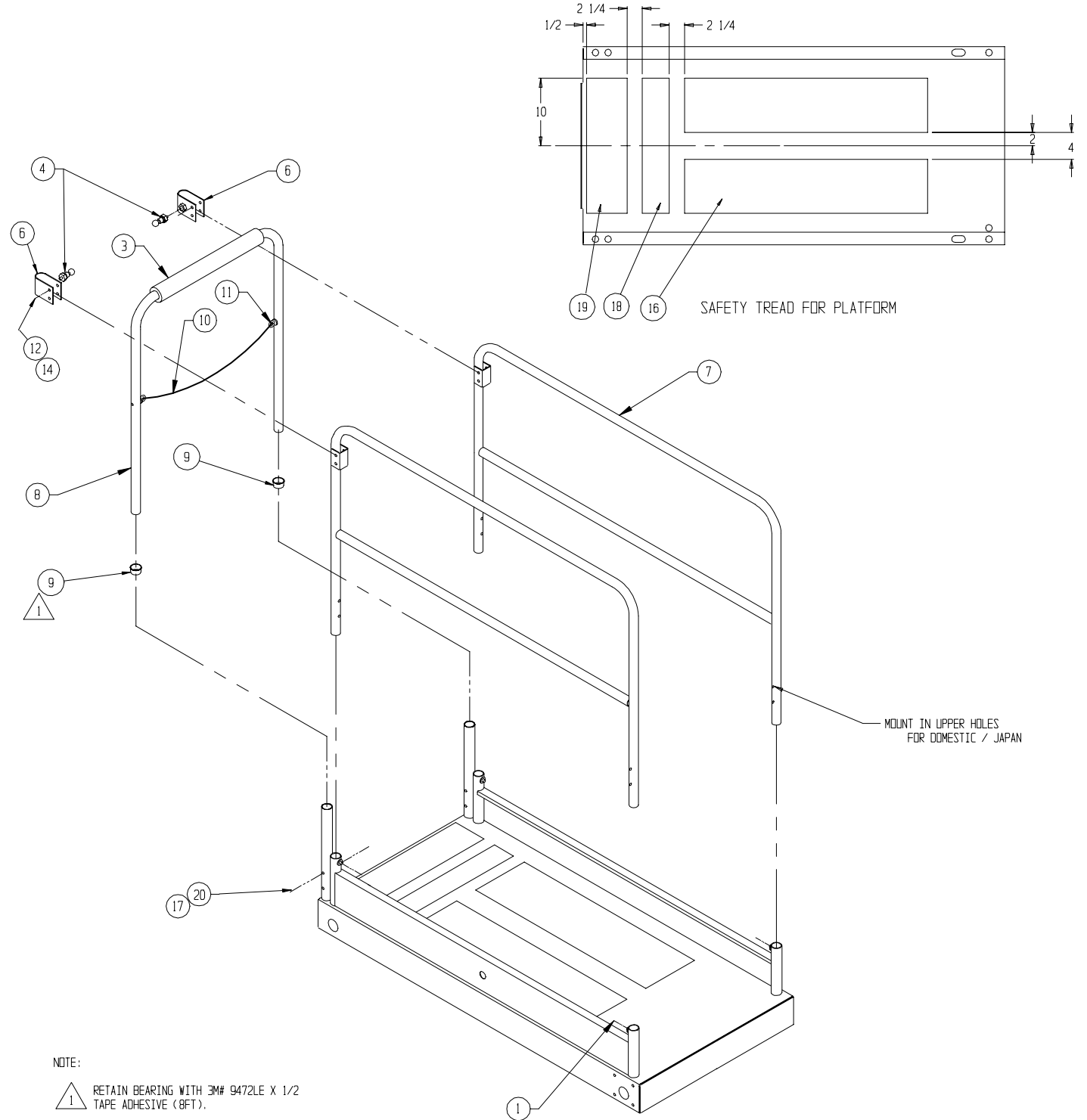


Platform Guardrail Installation

065603-004

ITEM	PART	DESCRIPTION	QTY	ITEM	PART	DESCRIPTION	QTY
1	066171-003	TAP BOLT 3/8-16 X 2 (FULL THREAD)	4	11	015748-002	REPAIR LINK	1
3	066692-022	FOAM TUBING	1	12	011248-005	NUT 5/16-18	4
4	003570-005	RETAINING PIN ASSY	2	14	011253-018	SCREW 5/16-18 HHC X 2 1/4	4
‡6	066498-000	WELDMENT, GATE LATCH	2	16	060830-002	SAFETY WALK 8 X 36	2
‡7	066257-007	WELDMENT SIDE RAIL	2	17	011254-018	SCREW 3/8-16 HHC X 2 1/4	2
‡8	066261-001	WELDMENT, END RAIL	1	18	060830-001	SAFETY WALK 4 X 20	1
9	065987-000	CAPLUG BEARING	2	19	060830-003	SAFETY WALK 6 X 21	1
10	063133-003	CHAIN ASS'Y	1	20	011248-006	NUT 3/8-16 HEX	2

‡ Reference Only - components included in paint kit.



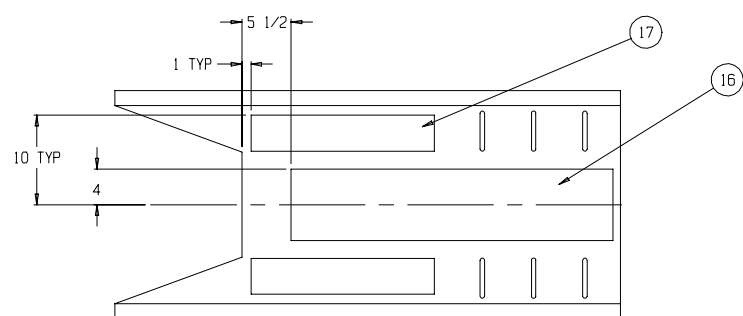
Deck Extension Assembly

065614-000

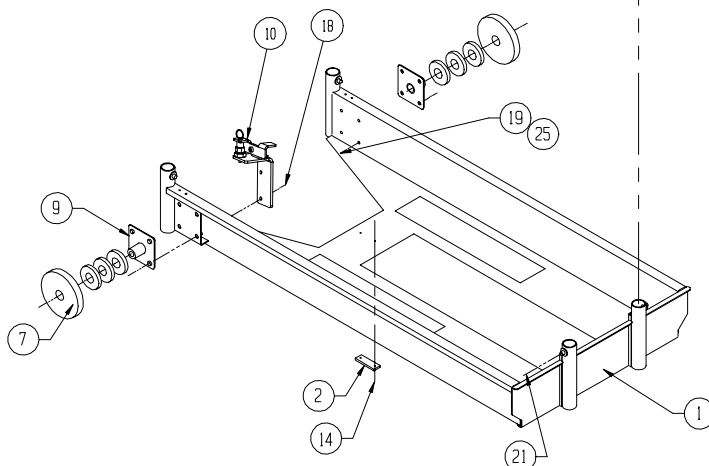
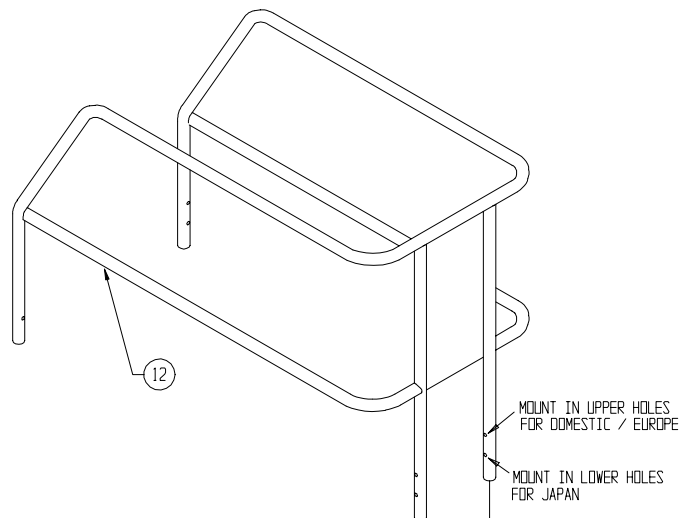
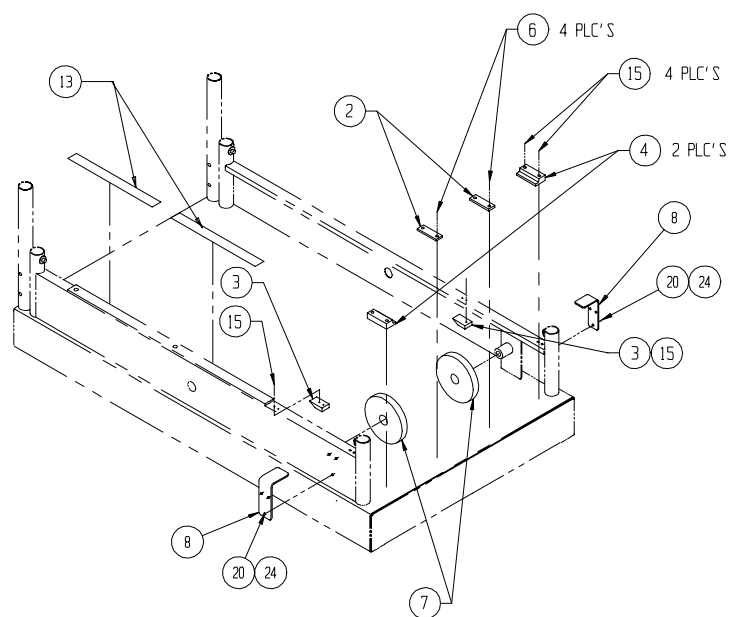
ITEM	PART	DESCRIPTION	QTY	ITEM	PART	DESCRIPTION	QTY
†1	066251-001	WELDMENT DECK EXT.	1	14	026553-004	RIVET 3/16 DIA X 3/8 GRIP	2
2	066198-000	WEAR PAD	3	15	026553-008	RIVET 3/16 DIA X 1/2 GRIP	8
3	066193-000	STOP	2	16	060830-002	SAFETY WALK 8 X 36	1
4	066176-000	WEAR PAD	2	17	060830-001	SAFETY WALK 4 X 20	2
6	026553-002	RIVET 3/16 DIA X .126-.250	4	18	011254-016	SCREW HHC 3/8-16 X 2	2
7	066195-000	PLATFORM ROLLER	4	19	011254-014	SCREW HHC 3/8-16 X 1 3/4	6
‡8	066407-011	BRACKET	2	20	011252-006	SCREW HHC 1/4-20 X 3/4	8
†9	066256-000	WELDMENT ROLLER MOUNT	2	21	066171-003	BOLT TAP 3/8-16UNC X 2	4
10	067185-000	WELDMENT DECK STOP	1	24	011240-004	WASHER 1/4 FLAT	16
†12	066260-001	WELDMENT EXT. RAIL X15	1	25	011238-006	WASHER 3/8 LOCK	8
13	065988-099	TAPE UHMW 1"	FT 3	26	014996-020	WASHER SAE 1-1/4 ZINC PLATED	6

† Reference Only - components included in weldment kit.

‡ Reference Only - components included in paint kit.



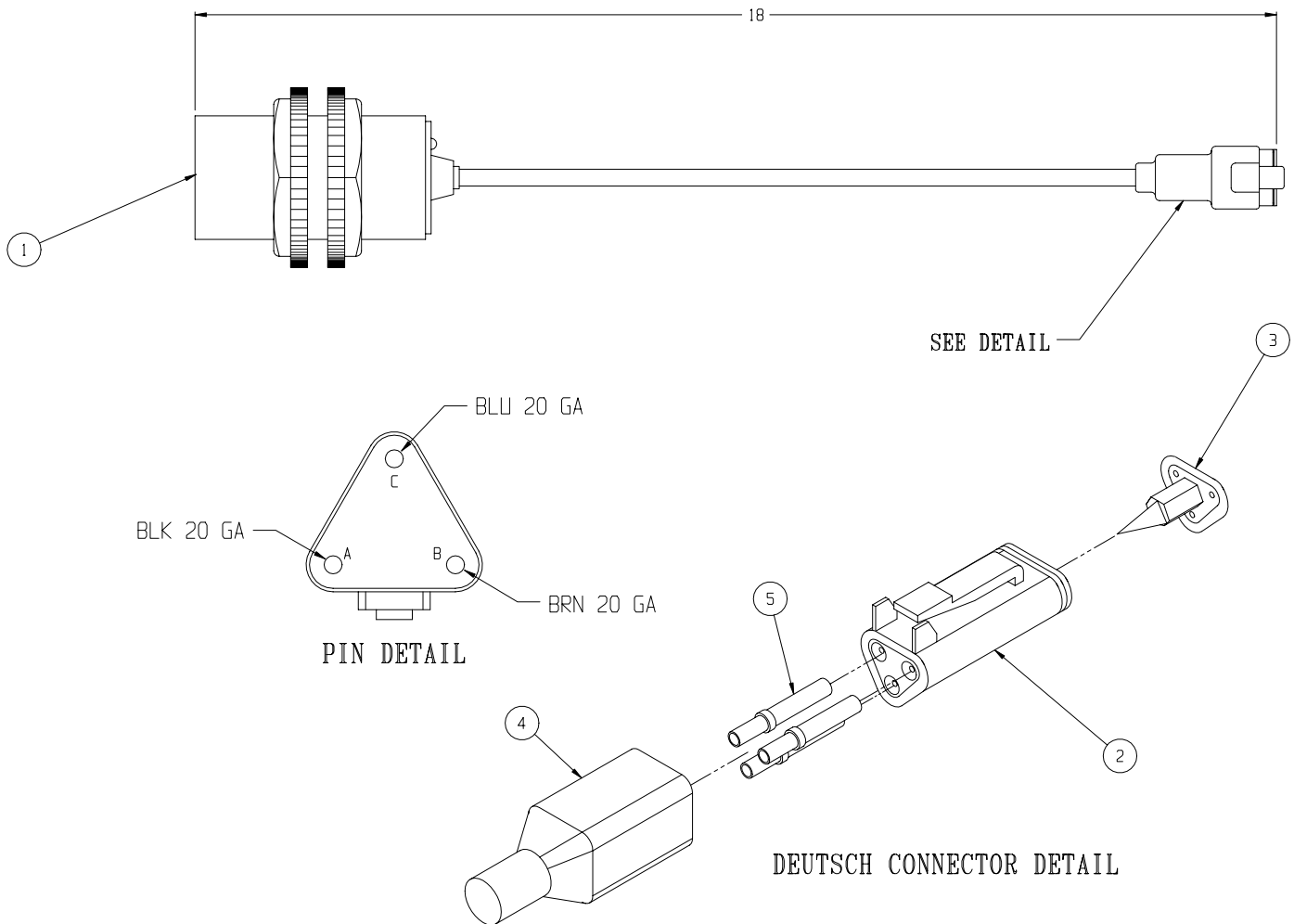
SAFETY TREAD FOR ROLL OUT DECK



Proximity Switch Assembly

067193-001

ITEM	PART	DESCRIPTION	QTY
1	REF.	PROX. SWITCH, LOCON IKCT3014	1
2	067456-000	CONNECTOR, DEUTSCH #DT06-3S-P012	1
3	067456-002	LOCKING WEDGE, DEUTSCH #W3S-P012	1
4	067456-005	BOOT, DEUTSCH #DT3S-BT	1
5	068762-003	CONTACT, DEUTSCH #0462-201-16141	3



NOTES:

Chassis Assembly

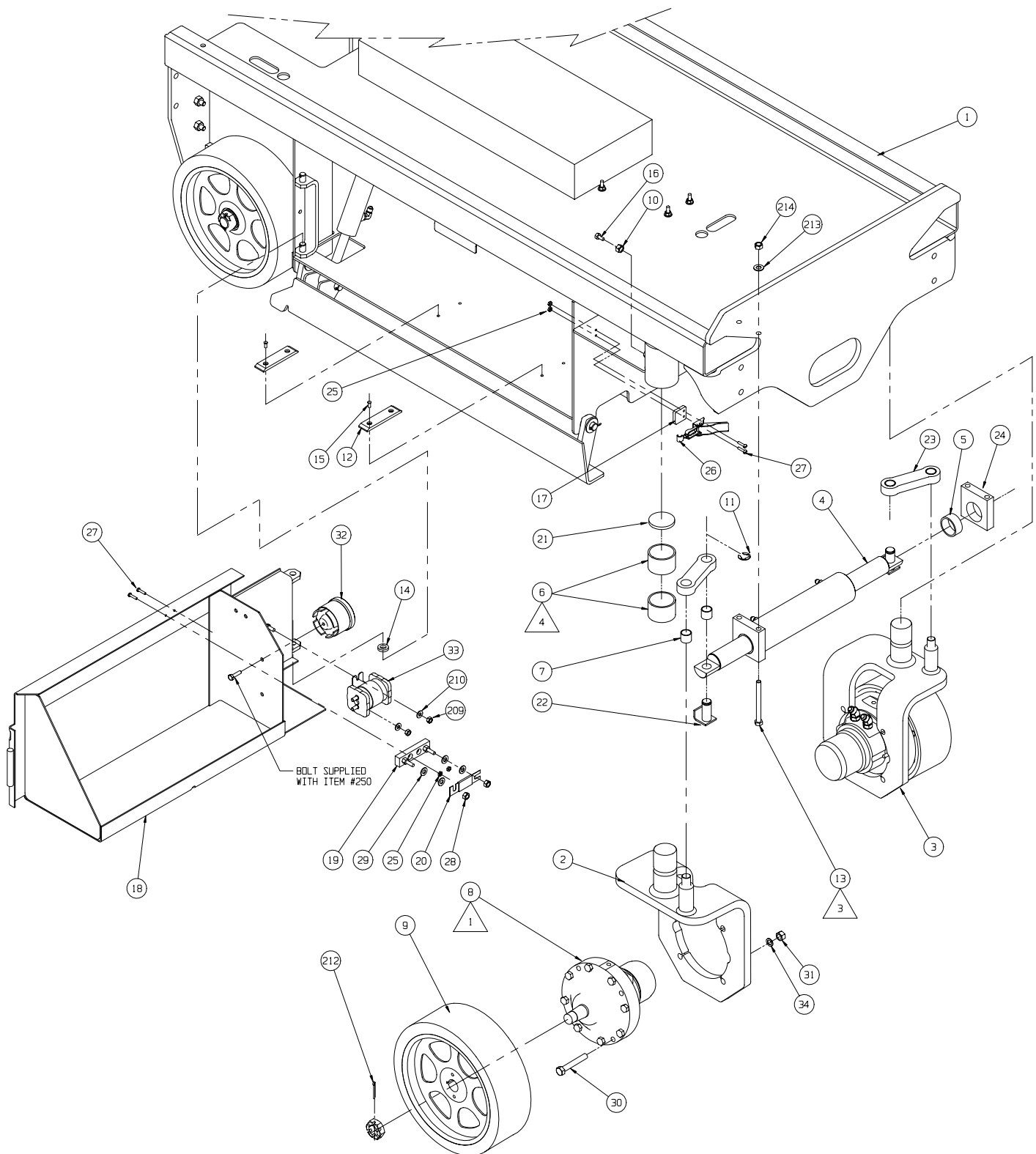
113002-000

ITEM	PART	DESCRIPTION	QTY	ITEM	PART	DESCRIPTION	QTY
†1	065620-025	CHASSIS WELDMENT	1	†18	065650-001	TRAY WELDMENT R.H. X15/19	1
†2	113063-000	YOKE WELDMENT R.H.	1	19	010149-000	FUSE BLOCK	1
†3	113064-000	YOKE WELDMENT L.H.	1	20	010148-001	FUSE 175 AMP	1
4	113051-000	STEERING CYLINDER ASSEMBLY	1	21	065733-000	THRUST PAD 1/4 UHMW	2
*	065371-011	SEAL KIT	REF	†22	065800-000	WELDMENT, STEER PIN	2
5	027931-072	BEARING	2	‡23	065731-000	STEER LINK X15/19	2
6	027931-059	BEARING	4	‡24	065732-000	STEER GUIDE	2
7	027931-022	BEARING	4	25	011248-002	LOCK NUT 8-32	6
8	113065-000	DRIVE MOTOR ASSEMBLY	2	26	005299-000	LATCH TOGGLE	2
9	065743-005	DRIVE WHEEL	2	27	011708-006	SCREW MACH RD HD 8-32 x 3/4	6
10	011273-006	NUT HEX 3/8-16 JAM	2	28	011248-005	LOCK NUT 5/16-18	2
11	013315-010	RING, RETAINING "E"	2	29	011240-005	WASHER FLAT STD 5/16	4
12	063728-001	SLIDE BLOCK	4	30	011255-028	SCREW HHC 7/16-14 UNC	8
13	011254-032	SCREW HHC 3/8-16 x 4	4	31	011248-007	LOCK NUT 7/16-14	8
14	011782-010	THRUST WASHER 1/2 X 7/8 X 3/16 LG	2	32	066807-001	ALARM DUAL TONE	1
15	026553-004	RVT POP 3/16 DIA. .25-.38 GRIP	8	33	010122-001	SOLENOID RELAY, MOTOR	1
16	011705-016	SCREW SET 3/8-16 x 1 HEX SOC	2	34	011239-007	WASHER FLAT 7/16 ASTM	8
‡17	064754-000	SPACER LATCH	2				

† Reference Only - components included in weldment kit.

‡ Reference Only - components included in paint kit.

Drawing #1 of 3



NOTES:

1. 1"-20 UNF SLOTTED NUT & 1/8" COTTER PIN INCLUDED WITH (ITEM 8) DRIVE MOTOR. CLEAN MOTOR SHAFT AND HUB BORE LUBRICATE NUT FACE AND THREADS. TORQUE NUTS TO 75 ±5 FT.-LBS. AFTER TORQUEING NUTS, MASK AROUND NUT AND COTTER PIN AND PAINT NUT, COTTER PIN, AND SHAFT SILVER
2. WHEN INSTALLING REAR WHEELS (ITEM 203), TIGHTEN CASTLE NUTS SNUGLY, THEN BACK-OFF NUT UNTIL WHEEL TURNS FREELY. INSTALL COTTER PIN
3. INSTALL BOLTS AS SHOWN TO REDUCE HYDRAULIC HOSE DAMAGE

4. LOCKTITE (80 GREEN) BEARINGS (ITEM 6) TO CHASSIS
5. UNLESS OTHERWISE NOTED, TORQUE FASTENERS PER UPRIGHT SPEC. #105, TORQUE FITTINGS PER UPRIGHT SPEC #106
6. SEVCON DIPP SWITCH SETTINGS BELOW.

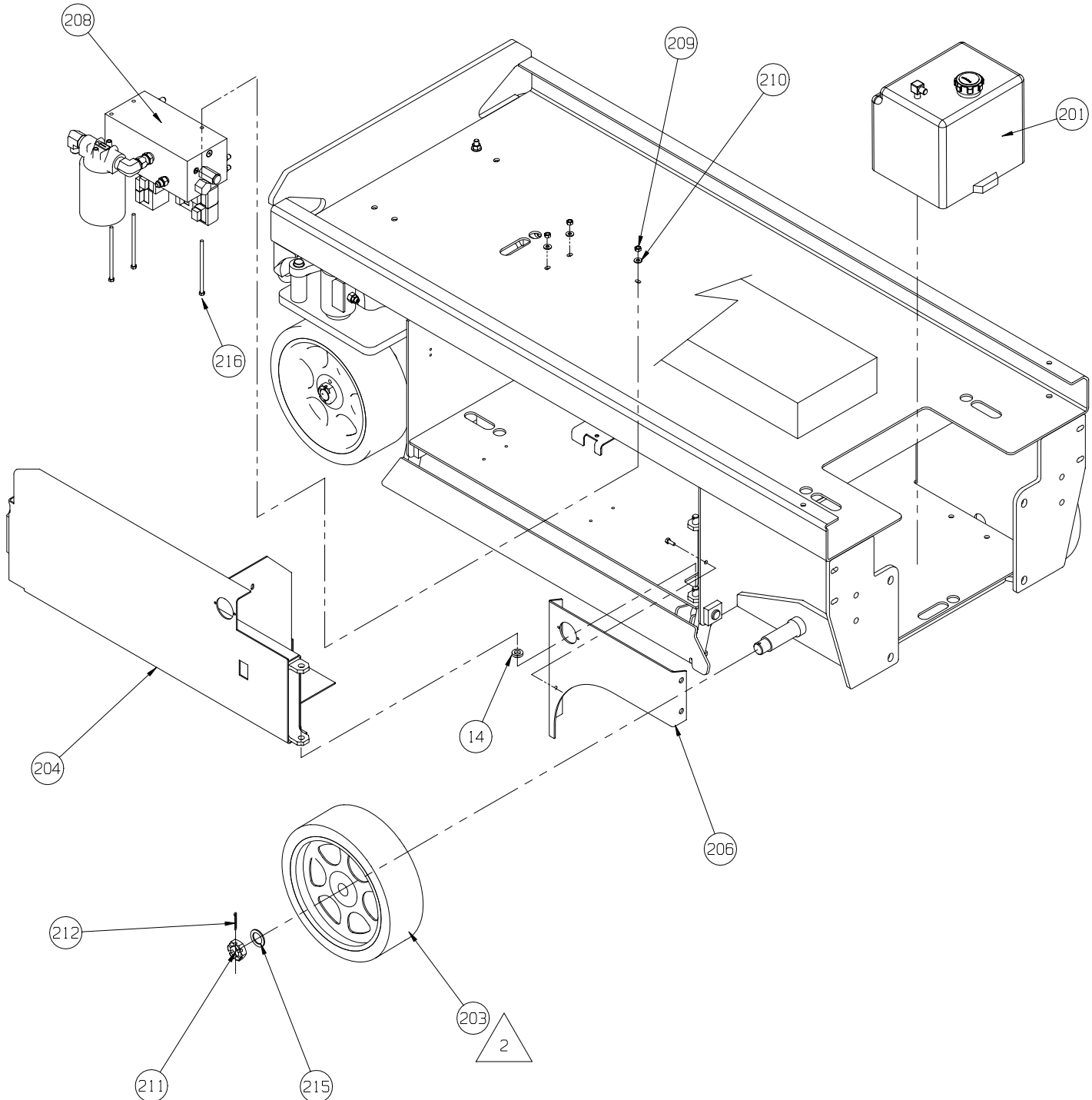
SW1	2	3	4	5	6	7	8
OFF	OFF	OFF	ON	OFF	ON	OFF	ON

Drawing #2 of 3

ITEM	PART	DESCRIPTION	QTY
201	101152-001	HYDRAULIC TANK ASS'Y X15	1
203	065744-021	IDLER WHEEL ASSEMBLY	2
†204	065657-002	TRAY WELDMENT L.H.	1
205	011254-010	SCREW HHC 3/8-16 X 1 1/4	8
†206	065979-002	WHEEL COVER WELDMENT L.H.	1
207	065270-000	FORKLIFT POCKET	1
208	113052-000	VALVE BLOCK ASSEMBLY	1
209	011248-004	LOCK NUT 1/4-20	11

ITEM	PART	DESCRIPTION	QTY
210	011240-004	WASHER FLAT STD 1/4	9
211	015945-016	NUT SLOTTED HEX JAM 1-14 UNF	2
212	011754-012	COTTER PIN 5/32 x 1-1/2	4
213	011240-006	WASHER FLAT STD 3/8	20
214	011248-006	LOCK NUT 3/8-16	14
215	063329-008	WASHER, FLAT 1" I.D. 1 1/2" O.D.	2
216	011252-040	SCREW HHC 1/4-20 UNC X 5	3

† Reference Only - components included in weldment kit.



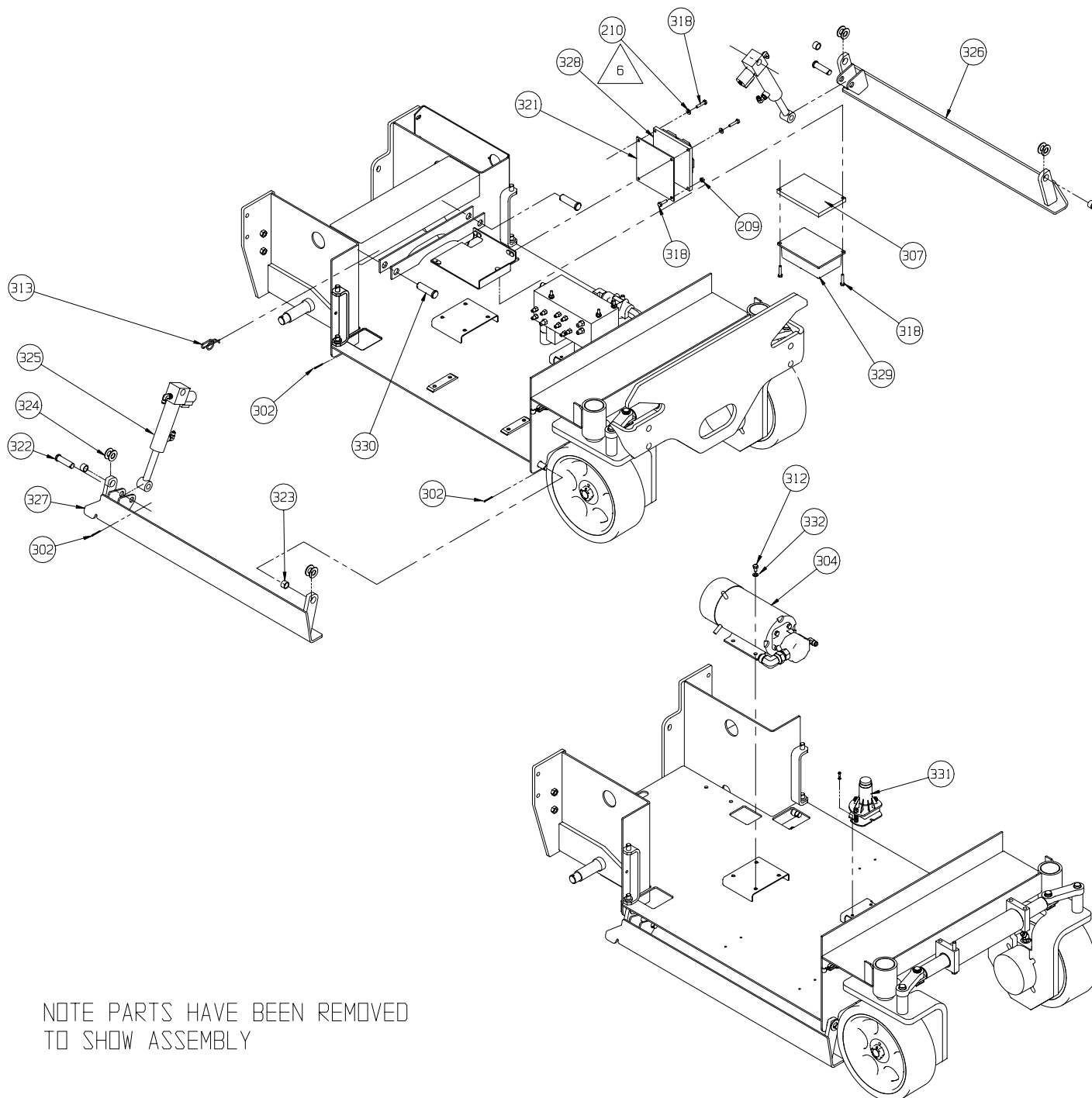
Drawing #3 of 3

ITEM	PART	DESCRIPTION	QTY
302	011753-012	COTTER PIN 1/8 X 1 1/2	6
304	113055-000	POWER UNIT ASSEMBLY	1
307	065984-000	HEAT SINK	1
312	011254-004	SCREW HHC 3/8-16 X 1/2	4
313	011757-010	COTTER RUE RING	4
318	012553-012	SCREW, SOCKET HD 1/4-20UNC X 1-1/2	2
‡321	065264-000	PLATE - CIRCUIT BOARD	1
322	011848-036	CLEVIS PIN 5/8 X 2 1/4	2
323	011780-040	BEARING 5/8 X 13/16 X 1/2 LG	4
324	014996-010	WASHER 5/8 SAE FLAT PLATED	8

ITEM	PART	DESCRIPTION	QTY
325	113053-000	CYL. ASSY - DEPRESSION RAIL	2
*	065970-001	SEAL KIT	REF
†326	065971-020	DEPRESSION RAIL WELDMENT L.H.	1
†327	065971-021	DEPRESSION RAIL WELDMENT R.H.	1
328	065709-001	CIRCUIT BOARD	1
329	065708-001	MOTOR CONTROL	1
330	011848-019	CLEVIS PIN 3/4 X 2 1/2	2
331	(SEE FINAL)	LEVEL SENSOR	REF
332	011240-006	3/8 FLAT WASHER	4

† Reference Only - components included in weldment kit.

‡ Reference Only - components included in paint kit.



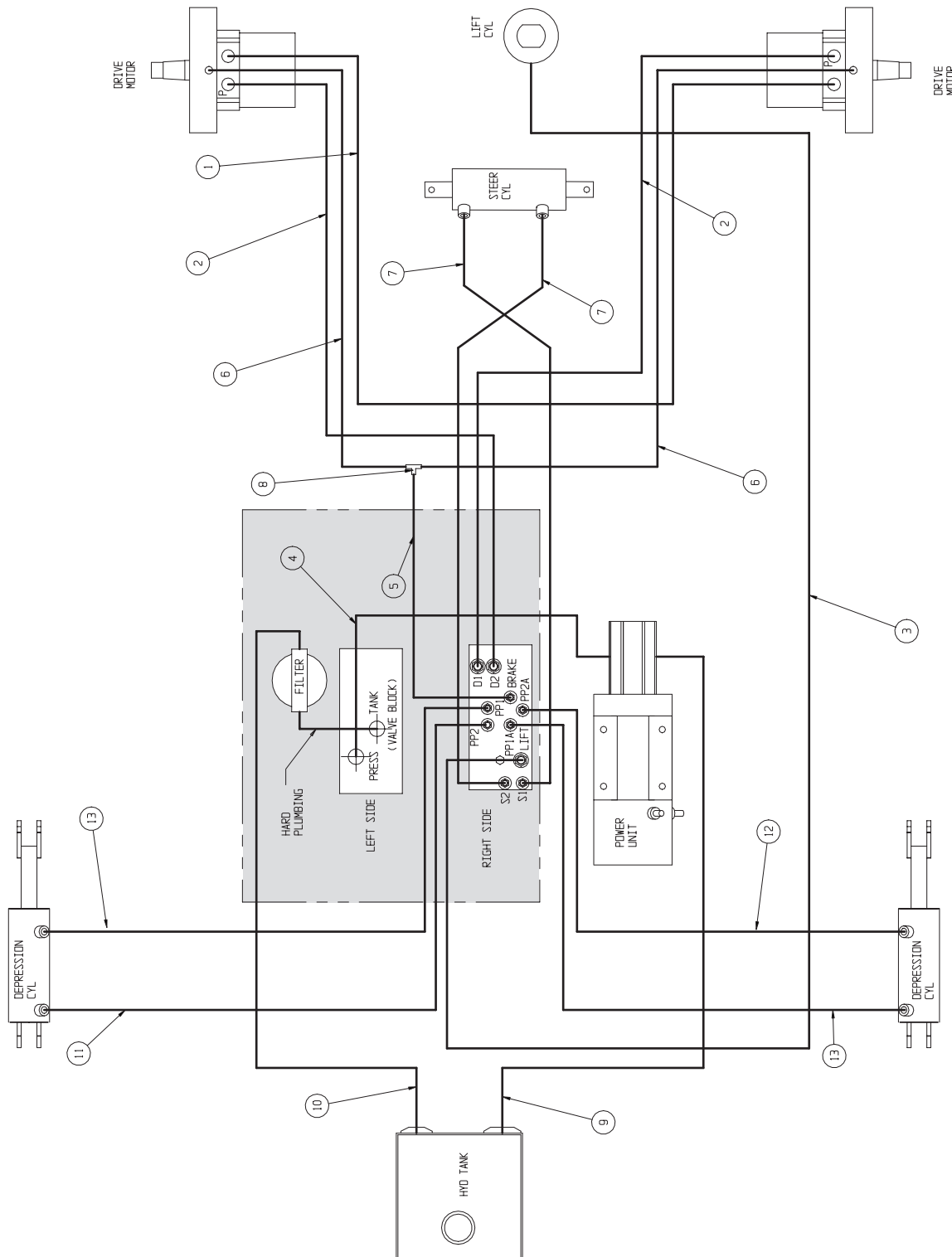
NOTE PARTS HAVE BEEN REMOVED
TO SHOW ASSEMBLY

Hose Kit Installation

113006-000

ITEM	PART	DESCRIPTION	QTY
1	114061-037	HOSE ASSY 3/8 X 37 (8FJX-8FJX)	1
2	113067-034	HOSE ASSY 3/8 X 34 (8FJX-6FJX X 90)	2
3	068965-150	HOSE ASSY 3/8 X 150 (6FJX-6FJX X 90)	1
4	107096-013	HOSE ASSY 3/8 X 13 (6FJX-6FJX X 90)	1
5	107090-013	HOSE ASSY 1/4 X 13 (4FJX-4FJX X 90)	1
6	107090-024	HOSE ASSY 1/4 X 24 (4FJX-4FJX X 90)	2
7	107095-031	HOSE ASSY 1/4 X 31 (4FJX-4FJX X 90)	2

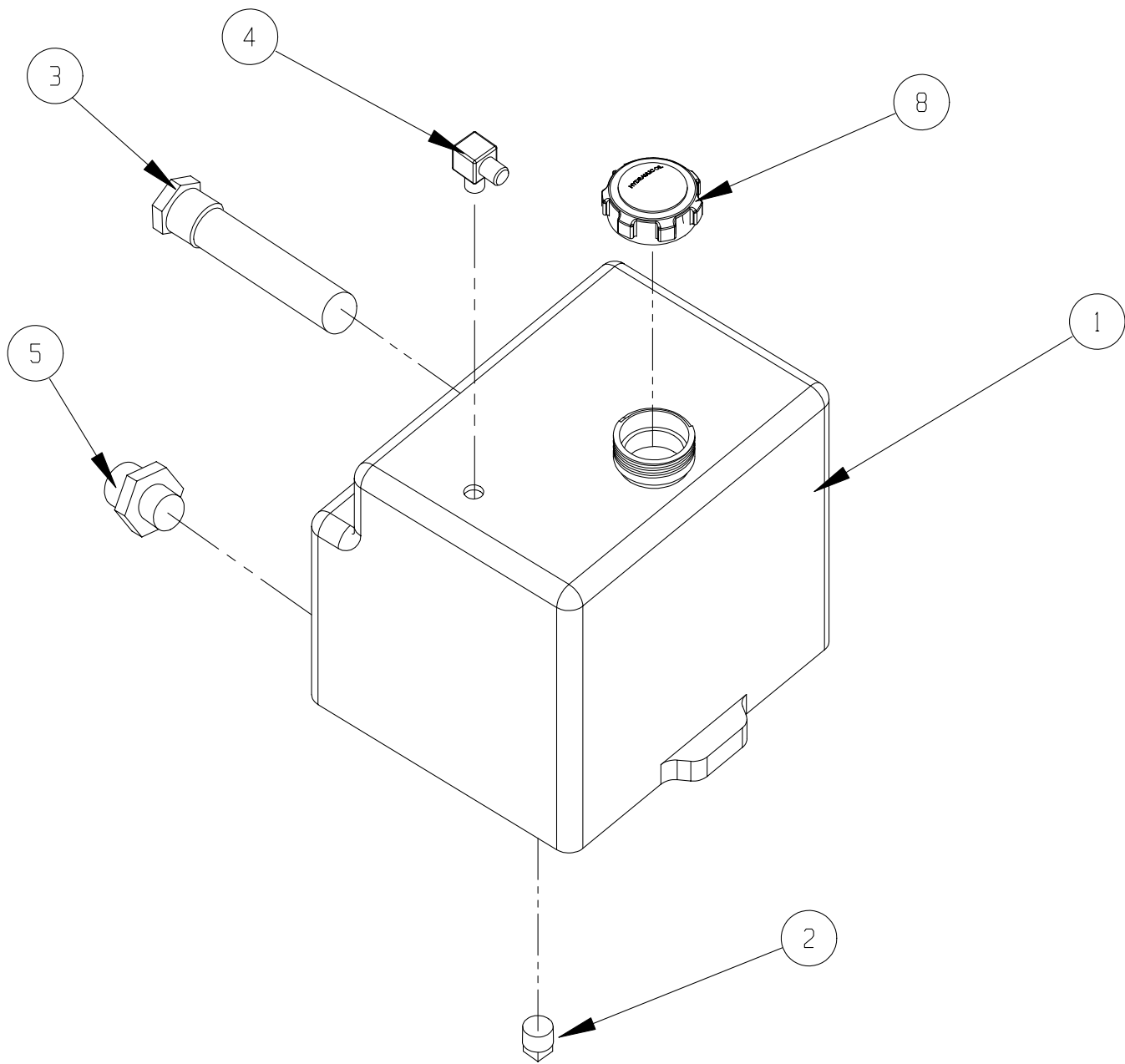
ITEM	PART	DESCRIPTION	QTY
8	020032-001	TEE FITTING 4MJ-4MJ-4MJ	1
9	061789-017	HOSE ASSY 3/4 X 17 1/2 (12FJX-12MP)	1
10	064156-021	HOSE ASSY 1/2 X 42 (8FJX-8FJX)	1
11	107095-038	HOSE ASSY 1/4 X 38 (4FJX-4FJX90)	1
12	107095-032	HOSE ASSY 1/4 X 32 (4FJX-4FJX90)	1
13	107095-037	HOSE ASSY 1/4 X 37 (4FJX-4FJX90)	2



Hydraulic Tank Assembly

101152-001

ITEM	PART	DESCRIPTION	QTY
1	101056-001	TANK, HYDRAULIC	1
2	021305-006	PLUG, MAGNETIC	1
3	061818-000	STRAINER, SUCTION	1
4	011940-006	FITTING ELBOW, 4MP-6MJ	1
5	011939-006	FITTING, 8MP-8MJ	1
8	068982-001	HYDRAULIC TANK LID	1

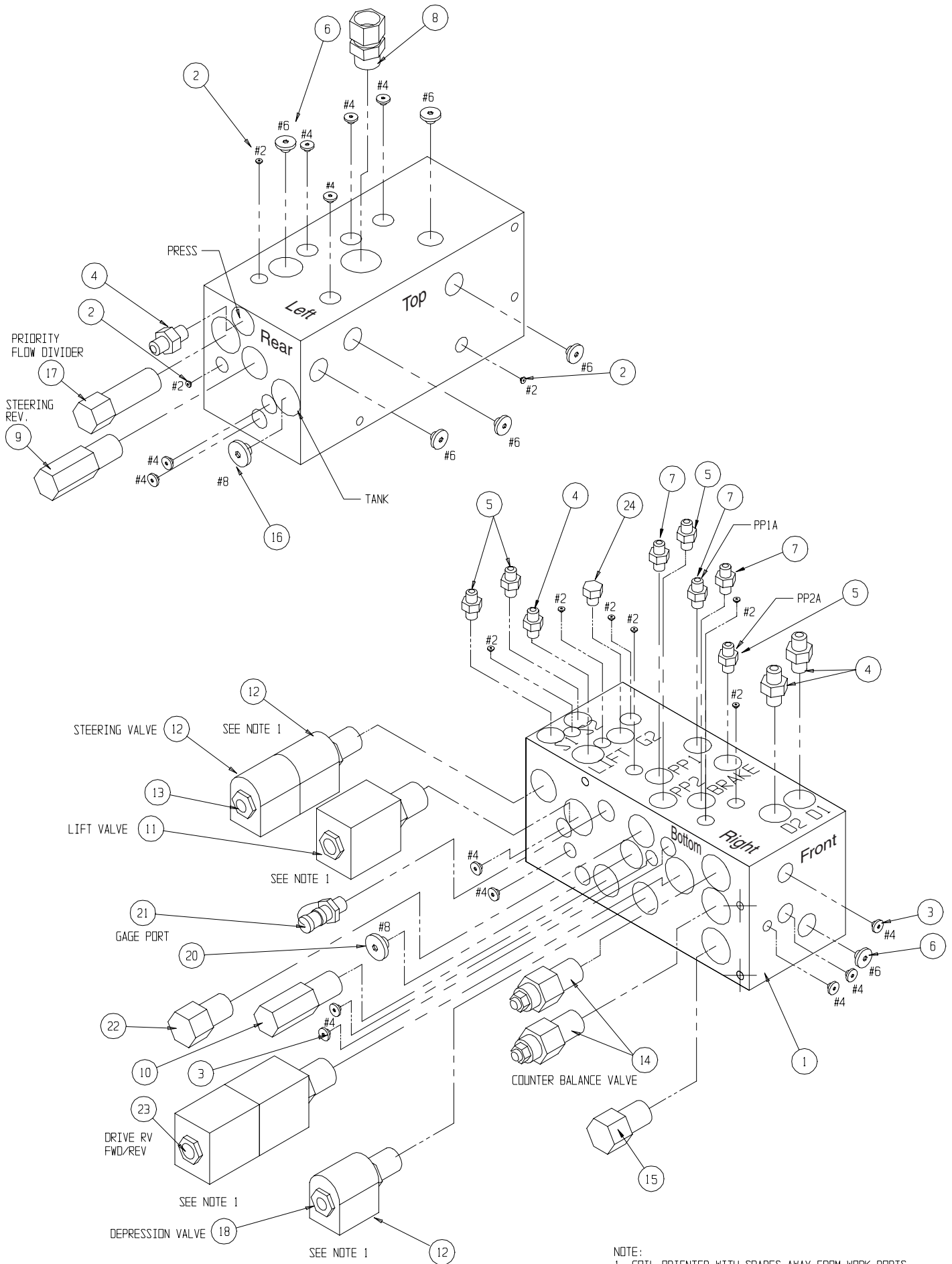


Valve Block

101120-122

ITEM	PART	DESCRIPTION	QTY.
1	100020-040	CONTROL VALVE BLOCK	1
2	012004-002	FITTING #2 PLUG	9
3	012004-004	FITTING #4 PLUG	15
4	011941-005	FITTING STRAIGHT 6MB - 6MJ	4
5	011941-001	FITTING STR 4MBH - 4MJ	4
6	012004-006	FITTING PLUG #6	6
7	031006-004	FITTING STR 4MB-4MJ W/.031 ORIFICE	3
8	064170-005	FITTING 8MB-8FJX	1
9	060390-017	RELIEF VALVE, STEERING	1
10	060390-025	RELIEF VALVE, MAIN	1
11	063923-006	2 POS - 4 WAY SOLENOID W/ COIL	1
12	101120-033	COIL	2

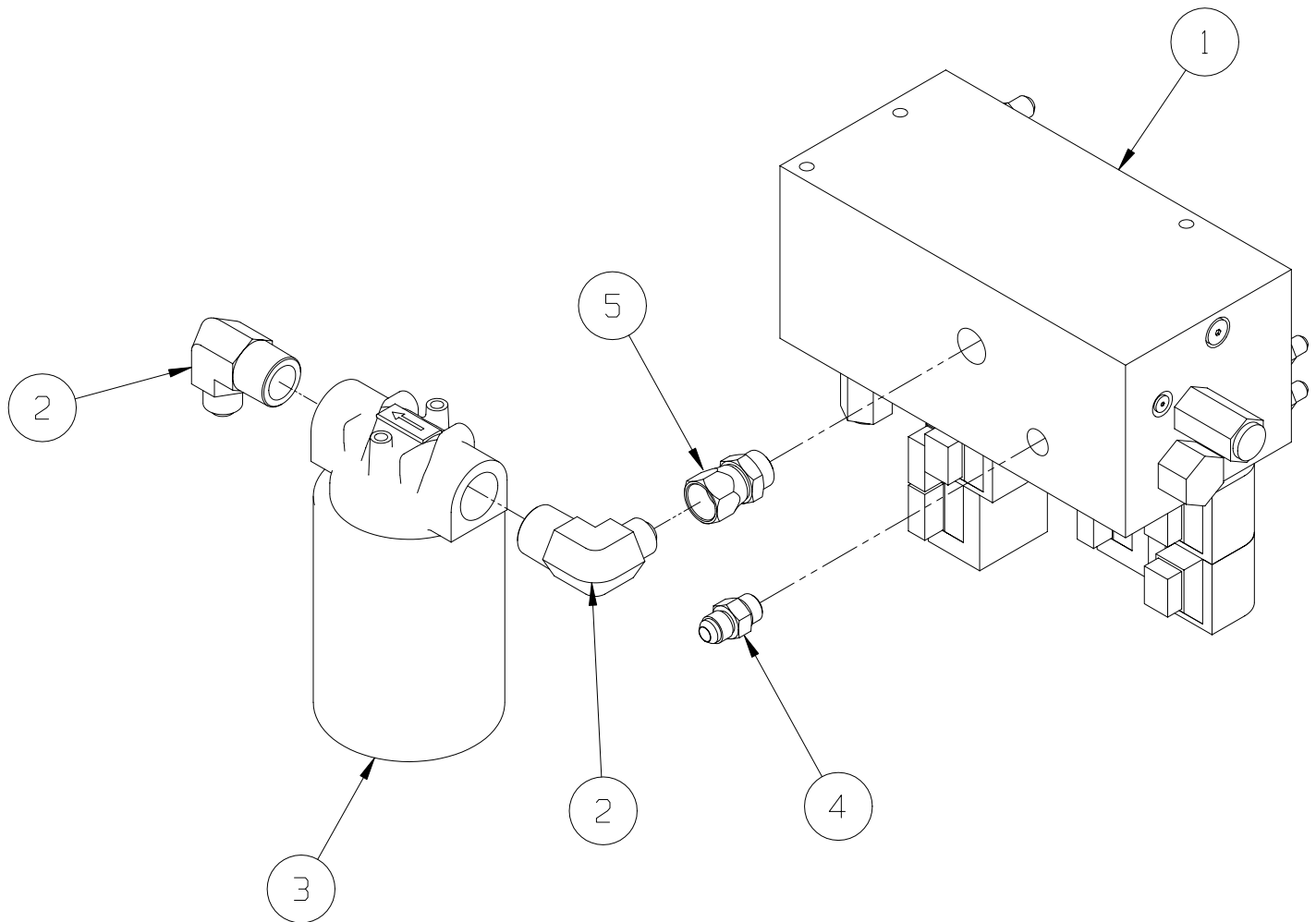
ITEM	PART	DESCRIPTION	QTY.
13	064845-000	3 POS - 4 WAY SOLENOID W/ COILS	1
14	101120-035	COUNTERBALANCE VALVE	2
15	060390-025	VALVE RELIEF	1
16	020021-008	FITTING PLUG #8	1
17	064843-000	FLOW DIVIDER VALVE	1
18	063973-001	2 POS POPPET VALVE W/ COIL	1
19	101120-033	COIL	1
20	012004-008	FITTING, #8 PLUG	1
21	063965-001	FITTING GAUGE	1
22	064841-000	CHECK VALVE	1
23	063923-021	3 POS - 4 WAY SOLENOID W/ COILS	1
24	020021-004	FITTING, HEX PLUG #4	1



Valve Block Assembly

113052-000

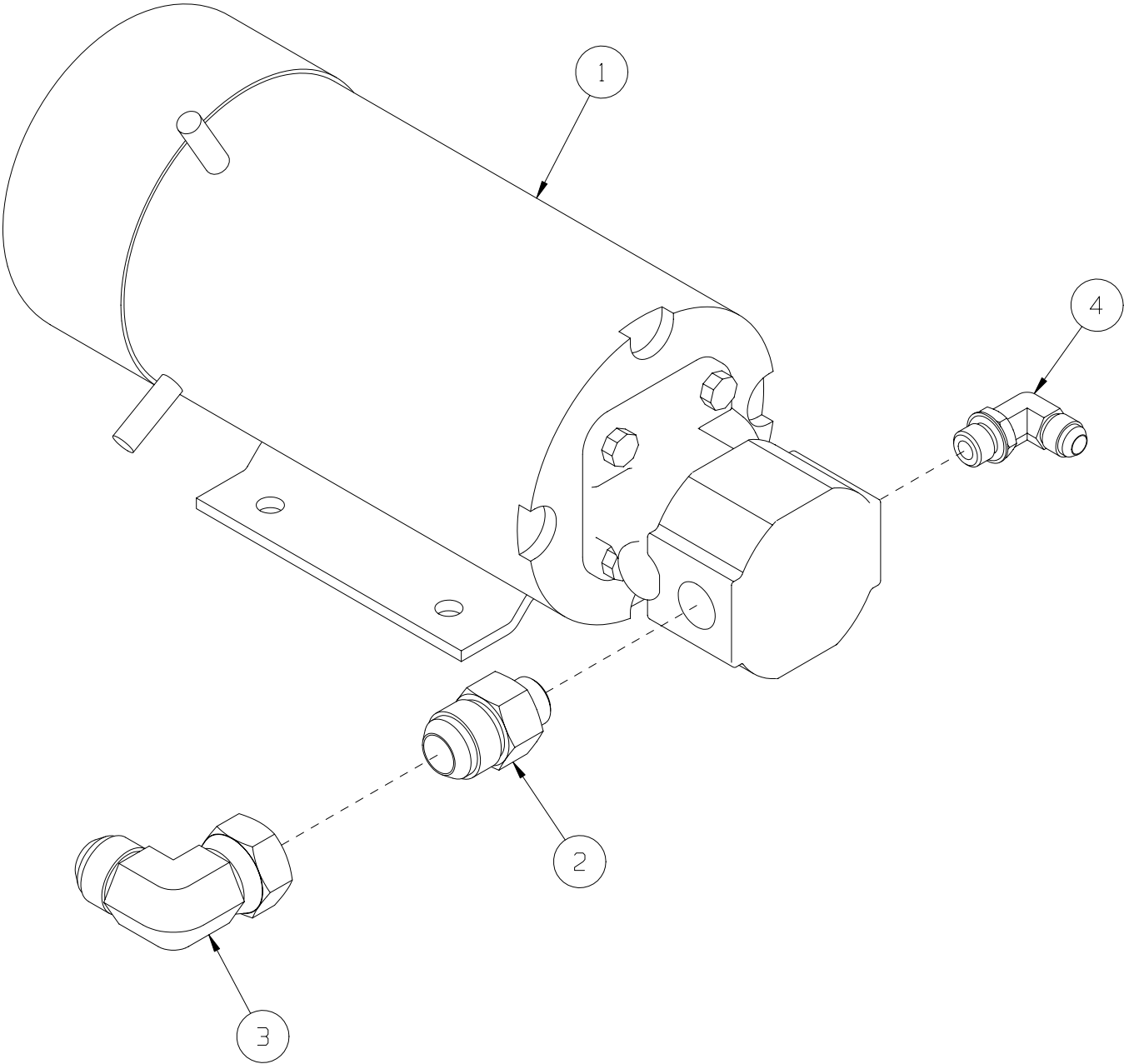
ITEM	PART	DESCRIPTION	QTY
1	101120-122	VALVE BLOCK ASSY.	1
2	011940-018	FITTING, 8MJ-12MP 90 DEG	2
3	005154-001	FILTER	1
4	011941-005	FITTING, 6MB-6MJ	1
5	064170-005	FITTING, 8MB-8FJX	1



Power Unit Assembly

113055-000

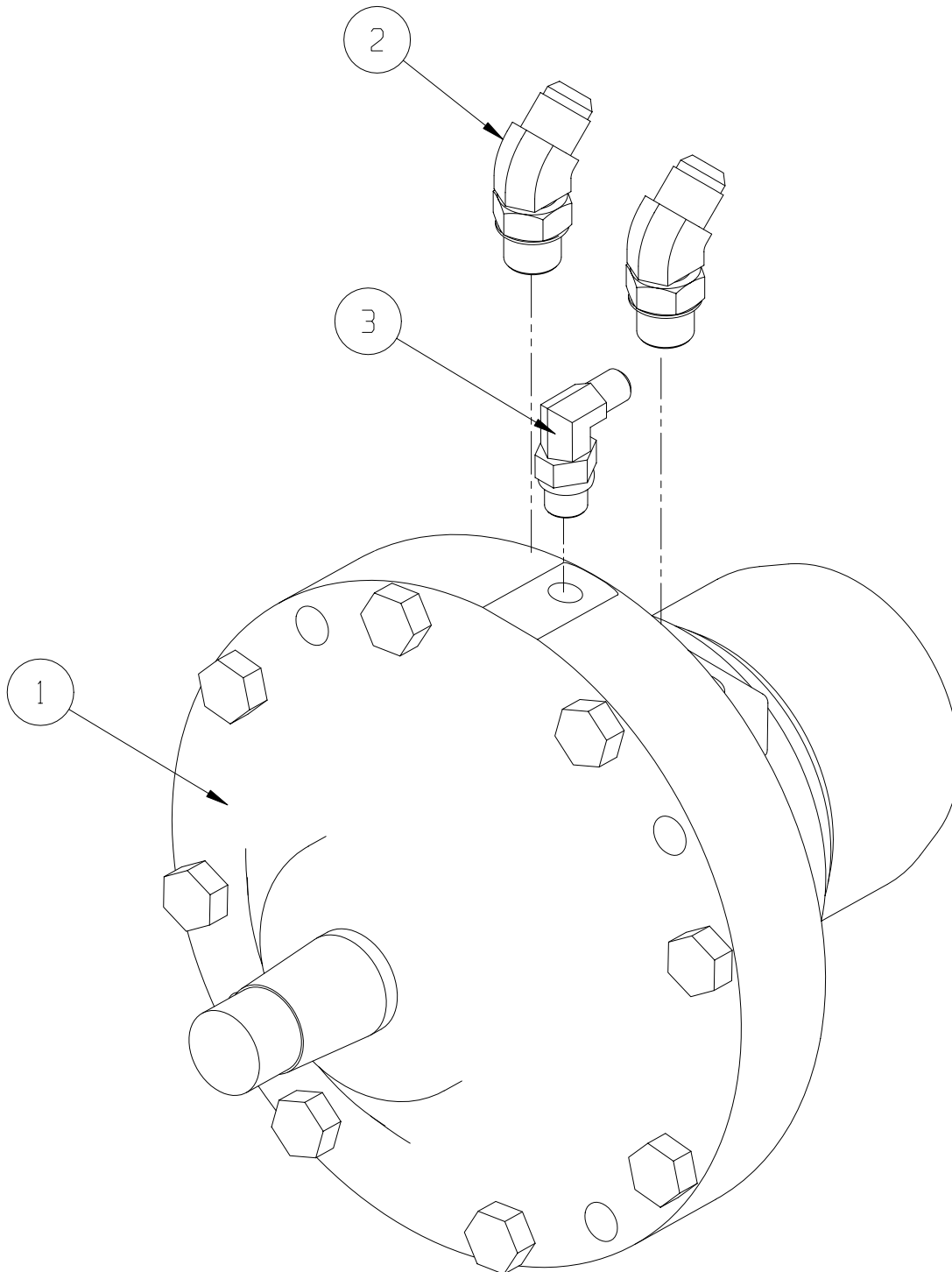
ITEM	PART	DESCRIPTION	QTY
1	101230-000	POWER UNIT	1
2	011941-012	FITTING, 8MB-12MJ	1
3	011937-007	FITTING, 12FJX-12MJ 90	1
4	011934-004	FITTING, 6MB-6MJ 90	1



Drive Motor Assembly

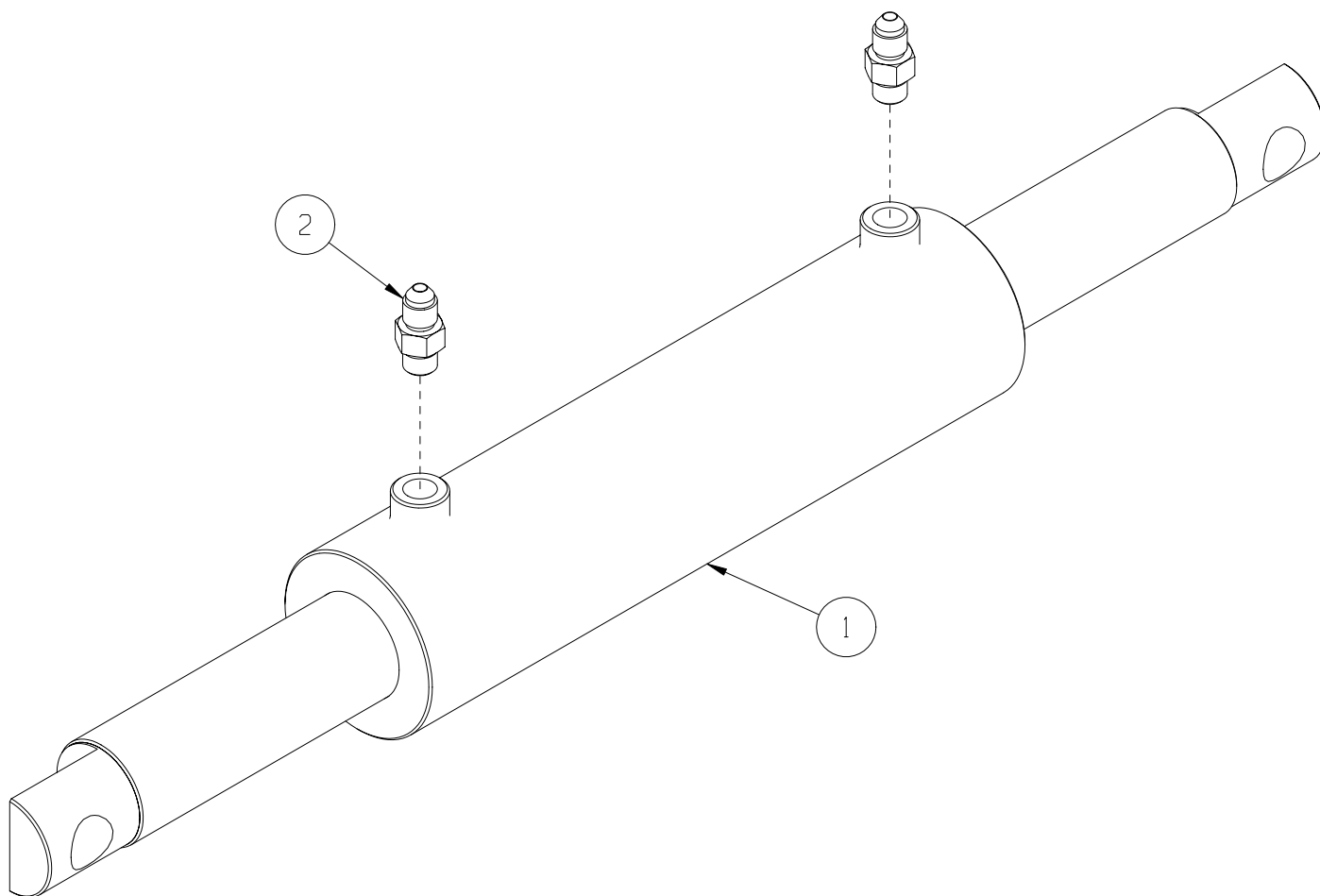
113065-000

ITEM	PART	DESCRIPTION	QTY
1	113066-000	HYDRAULIC MOTOR / BRAKE	1
2	011935-004	FITTING, 6MB-6MJ45 FS	2
3	011934-001	FITTING, 4MB-4MJ90 FS	1



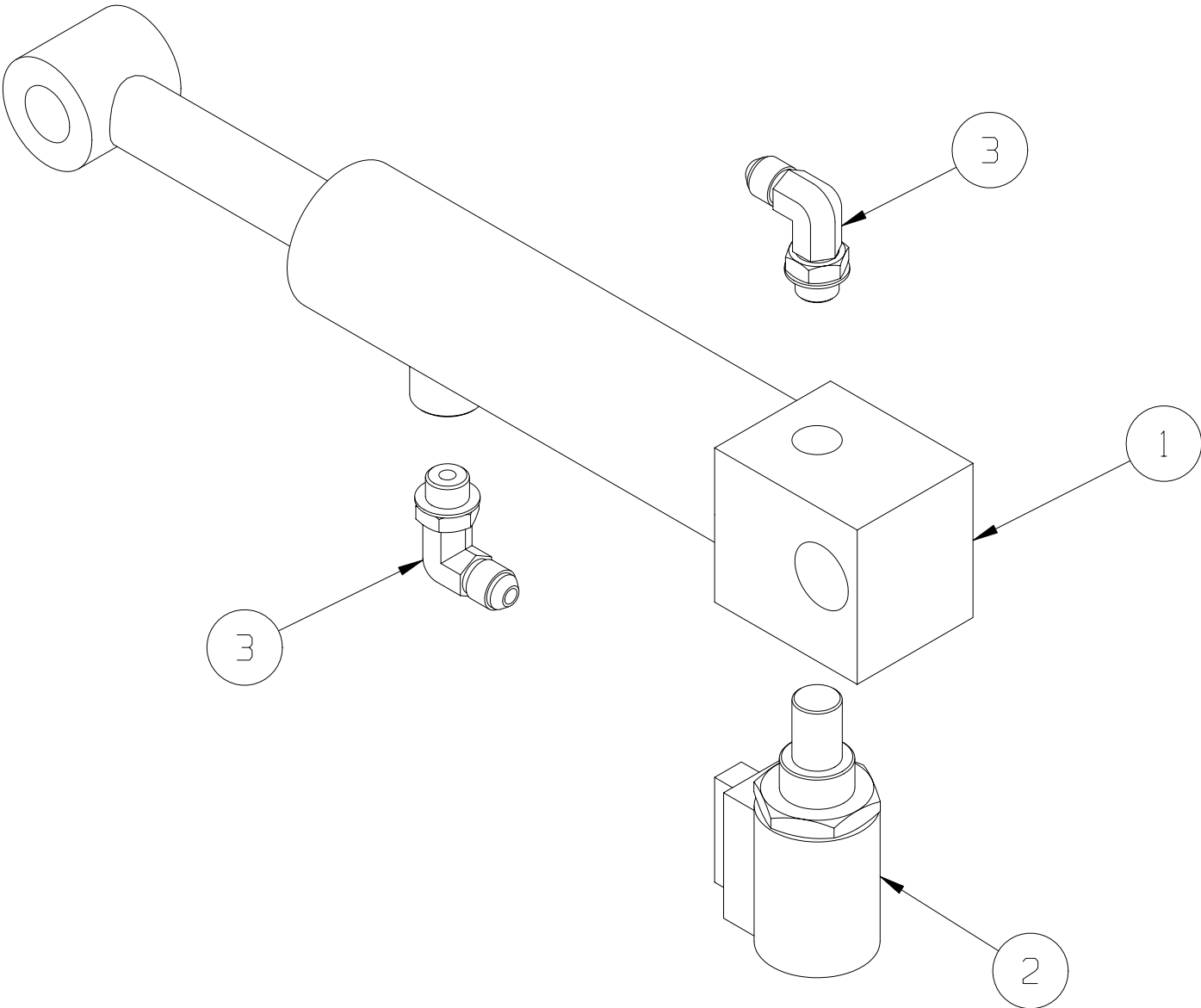
Steering Cylinder Assembly 113051-000

ITEM	PART	DESCRIPTION	QTY
1	065371-000	STEERING CYLINDER	1
*	065371-011	SEAL KIT	REF
2	011941-001	FITTING, 4MB-4MJ	2



Depression Cylinder Assembly
113053-000

ITEM	PART	DESCRIPTION	QTY
1	065970-001	HYDRAULIC CYLINDER	1
*	065970-001	SEAL KIT	REF
2	063973-001	VALVE, SOLENOID	1
3	011934-001	FITTING, 4MB-4MJ90	2

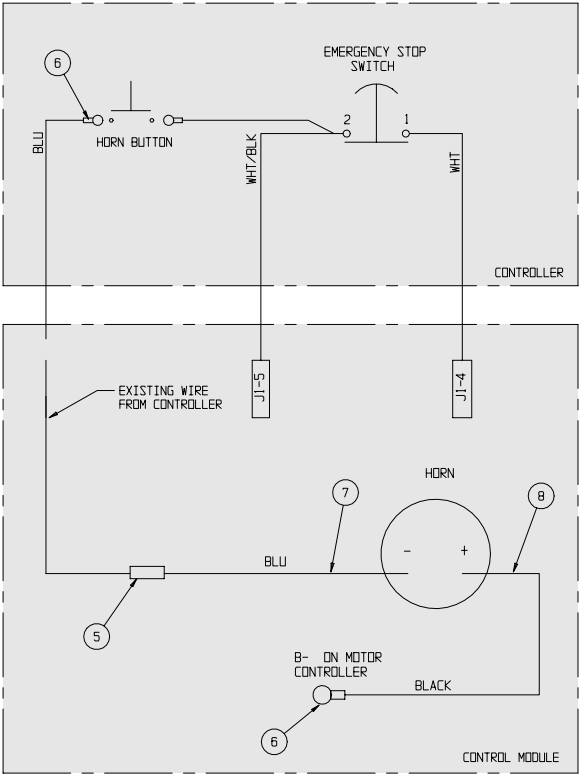
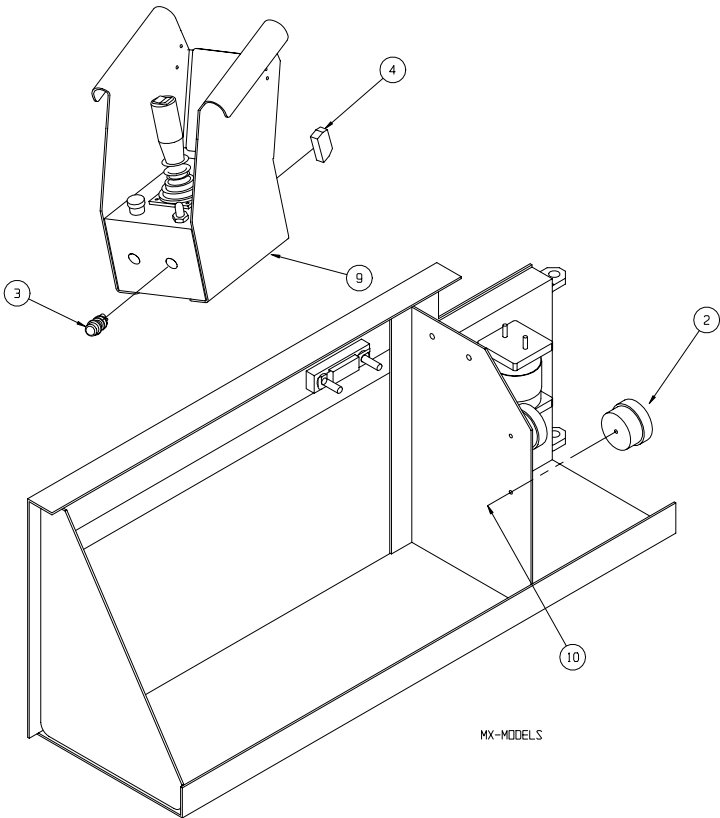


Horn Assembly Option

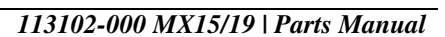
066614-020

ITEM	PART	DESCRIPTION	QTY
1	-	CONTROL MODULE ASSEMBLY	REF
2	066807-003	HORN, 24 VDC	1
3	066805-018	SWITCH, PUSH BUTTON 6E	1
4	066805-010	CONTACT BLOCK NO	1
5	029620-002	CONNECTOR, BUTT 16-14 GA	1

ITEM	PART	DESCRIPTION	QTY
6	029601-013	CONNECTOR, RING TERMINAL	4
7	029453-099	WIRE, 16 AWG BLUE	4 FT
8	029452-099	WIRE, 16 AWG BLACK	4 FT
9	-	CONTROLLER ASSY	REF
10	011252-006	SCREW HHC 1/4-20 X 3/4	1



Hour Meter/Low Voltage Indicator Option 066613-020



Removable Controller Option

061898-001

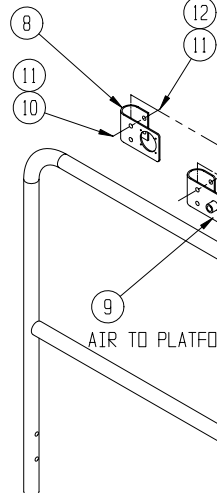
ITEM	PART	DESCRIPTION	QTY
1	028800-003	PLUG CONNECTOR (FEMALE)	1
2	028800-004	PIN CONTACT (MALE)	15
3	028800-015	PLUG SEALING	16
4	028800-016	RECEPTACLE CONNECTOR W/ CLAMP (MALE)	1
5	028800-005	SOCKET CONTACT (FEMALE)	15

ITEM	PART	DESCRIPTION	QTY
8	030719-001	110 VAC BRACKET	1
9	030719-002	AIR BRACKET WELDMENT	1
10	011254-016	SCREW HHC GRD5 3/8-16UNC X 2	4
11	011240-006	WASHER 3/8 STD FLAT	4
12	011248-006	NUT HEX ESNA 3/8-16	2

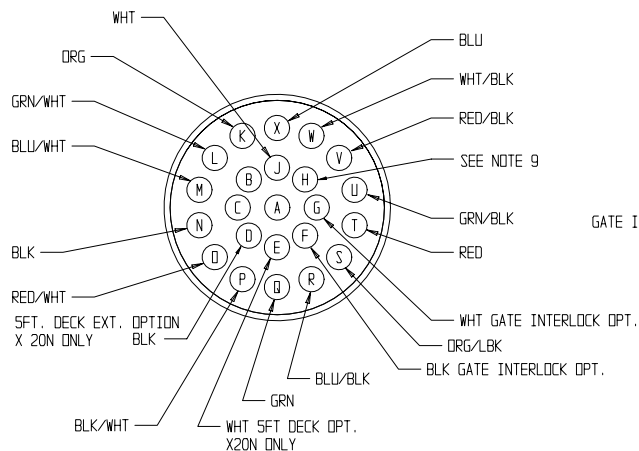
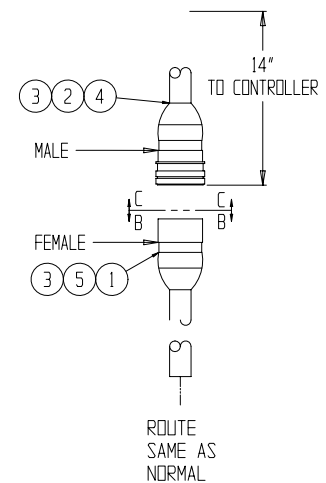
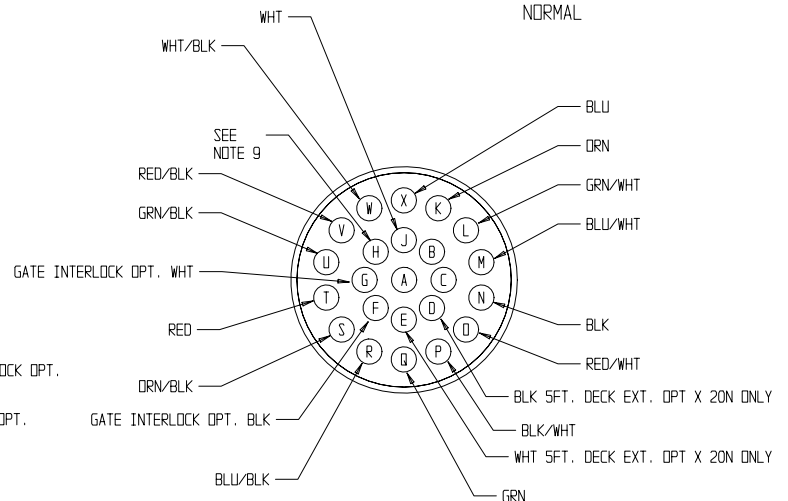
NOTES

- CUT OFF CONTROL CABLE 14 INCHES BELOW STRAIN RELIEF ON CONTROLLER.
- CUT OUTER CABEL COVER OF LINKAGE CABEL BACK APPROXIMATELY 1-1/2 INCH AND STRIP APPROXIMATELY 1/4 INCH OF EACH END.
- CRIMP SOCKETS (28800-005) ONTO WIRE ENDS AND INSERT INTO CONNECTOR (28800-016). REF. VIEW B-B.
- CUT OUTER CABEL COVER OF CONTROLLER END BACK APPROXIMATELY 1-1/2 INCH AND STRIP APPROXIMATELY 1/4 INCH OF EACH END.
- SLIDE BOOT AND CLAMP ONTO CABLE.
- CRIMP PINS (28800-004) ONTO WIRE ENDS AND INSERT INTO CONNECTOR (28800-003). REF. VIEW C-C.
- CLAMP BOOT TO CONNECTOR.
- CONNECT CONTROLLER AND TEST MACHINE FOR PROPER FUNCTION.
- USE TERMINAL " H " FOR HORN OPTION OR IF AUX WIRE IS REQUIRED.
- ITEM #8 THRU 12 REQD ONLY FOR 110 VAC AND/OR AIR TO PLATFORM.

110 VAC TO PLATFORM



SEE NOTE #10

VIEW B-B
MODULE ENDVIEW C-C
CONTROLLER END

Label Installation - MX15

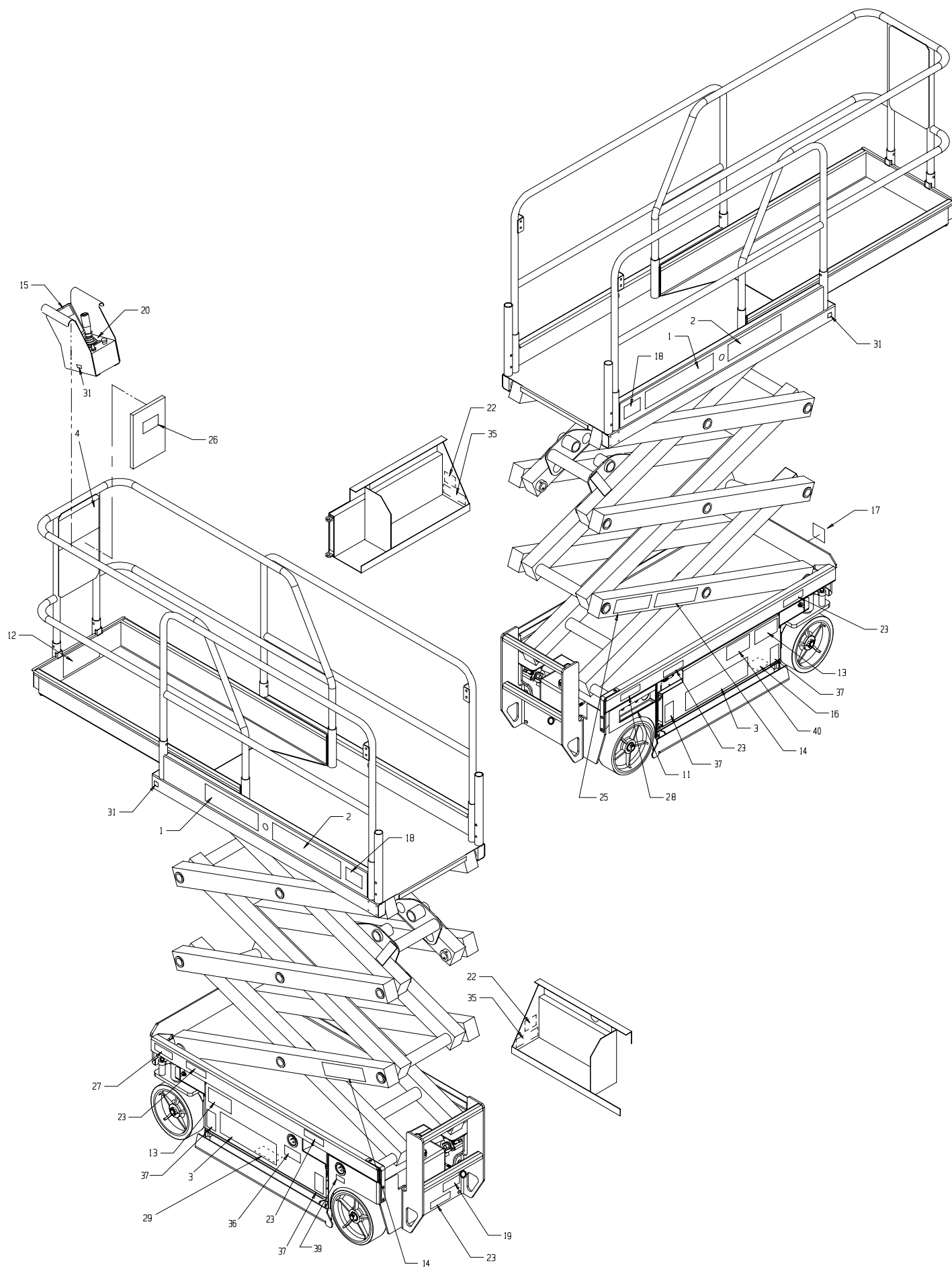
065612-033

ITEM	PART	DESCRIPTION	QTY
1	061683-004	LABEL UPRIGHT	2
2	061684-022	LABEL MX 15	2
3	061683-014	LABEL UPRIGHT	2
4	066550-000	LABEL DANGER	1
11	066559-000	LABEL CONTROLS	1
12	101251-000	LABEL MAX LOAD DECK EXT.	1
13	066552-000	LABEL WARNING	2
14	066553-003	LABEL WARNING KEEP CLEAR	2
15	066554-000	LABEL CAUTION	1
16	066555-000	LABEL CAUTION	1
17	066556-000	LABEL CAUTION	1
18	101250-001	LABEL MAX LOAD PLATFORM	2
19	066558-000	LABEL EMERG. LOWERING	1
20	101222-004	LABEL CONTROLLER	1
22	05221-000	LABEL BATTERY	2
23	014222-003-99	LABEL FORK-LIFT HERE	5
25	063255-001	LABEL SCISSOR BRACE	1
26	010076-001	LABEL INST.	1
27	061220-002	LABEL ANSI	1
28	101252-002	LABEL WHEEL MAX LOAD	1
29	061205-005	NAME PLATE	1
31	064444-000	LABEL USA	4
35	062562-001	LABEL DANGER	2
36	066522-000	LABEL BATTERY CHARGER	1
37	066556-001	LABEL WARNING	4
39	068639-000	LABEL POWER TO PLATFORM	1
40	107051-000	LABEL, BATTERY DISCONNECT	1

Label Installation - MX19

065712-033

ITEM	PART	DESCRIPTION	QTY
1	061683-004	LABEL UPRIGHT	2
2	061684-023	LABEL MX 19	2
3	061683-014	LABEL UPRIGHT	2
4	066550-000	LABEL DANGER	1
11	066559-000	LABEL CONTROLS	1
12	101251-000	LABEL MAX LOAD DECK EXT	1
13	066552-000	LABEL WARNING	2
14	066553-003	LABEL WARNING KEEP CLEAR	2
15	066554-000	LABEL CAUTION	1
16	066555-000	LABEL CAUTION	1
17	066556-000	LABEL CAUTION	1
18	101250-000	LABEL MAX LOAD PLATFORM	2
19	066558-000	LABEL EMERG. LOWERING	1
20	101222-004	LABEL CONTROLLER	1
22	05221-000	LABEL BATTERY	2
23	14222-003-99	LABEL FORK-LIFT HERE	1
25	063255-001	LABEL SCISSOR BRACE	1
26	010076-001	LABEL INST.	1
27	061220-002	LABEL ANSI	1
28	101252-009	LABEL WHEEL MAX LOAD WHEEL	1
29	061205-005	NAME PLATE	1
31	064444-000	LABEL USA	4
35	062562-001	LABEL DANGER	2
36	066522-000	LABEL BATTERY CHARGER	1
37	066556-001	LABEL WARNING	4
39	068639-000	LABEL POWER TO PLATFORM	1
40	107051-000	LABEL, BATTERY DISCONNECT	1



NOTES:

UpRight

Call Toll Free in U.S.A.
1-800-926-LIFT

UpRight, Inc.

801 South Pine Street
Madera, California 93637

TEL: 559-662-3900

FAX: 559-673-6184

PARTS: 1-888-UR-PARTS

PARTS FAX: 1-800-669-9884

UpRight

Call Toll Free in U.S.A.

1-800-926-LIFT

P/N 113102-000
11-02

UpRight

Unit S1, Park West Industrial Park
Friel Avenue
Nangor Road
Dublin 12, Ireland

TEL: +353 1 620 9300

FAX: +353 1 620 9301