

# **Parts Manual**

## **MX15 / MX19 Work Platform**

### **European Specifications**

**Serial Numbers 20600 - Current**

---

**Publication Number: 113102-020**

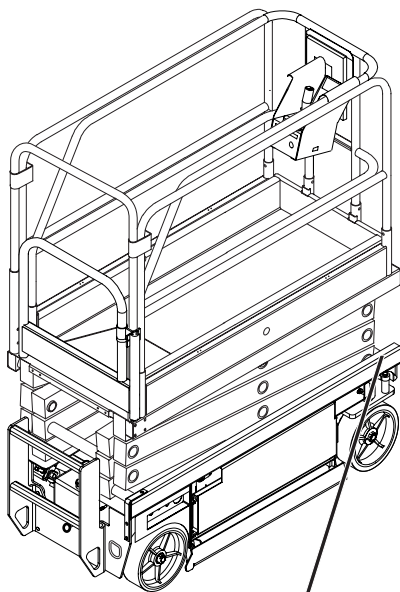
---

**UpRight**

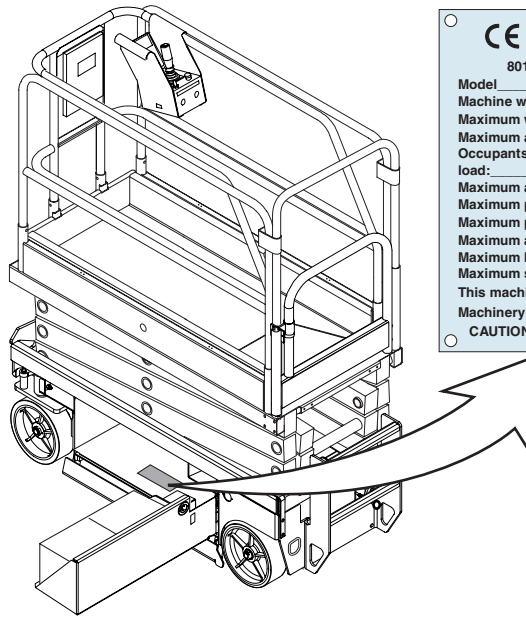
# MX15 / MX19

## Work Platform

When contacting UpRight for service or parts information, be sure to include the MODEL and SERIAL NUMBERS from the equipment nameplate. Should the nameplate be missing, the SERIAL NUMBER is also stamped on top of the chassis above the front axle pivot.



**Stamped Serial  
Number**



<b>CE</b>		<b>UpRight Inc.</b>	
801 S. PARK ST. MADERA CALIFORNIA 93637 USA			
Model _____		Serial number: _____	
Machine weight _____ kg		Mfg. date: _____	
Maximum wheel load: _____			
Maximum allowable incline of machine when elevated: _____ deg.			
Occupants and equipment must not exceed the rated maximum load: _____ kg Maximum platform occupants: _____			
Maximum allowable side force on platform: _____ N			
Maximum platform height: _____ m			
Maximum platform reach: _____ m			
Maximum allowable wind speed: _____ m/s=Beaufort scale _____			
Maximum hydraulic system pressure: _____ bar			
Maximum system voltage: _____ Vdc			
This machine is manufactured to comply with Machinery directive 89-392/CEE			
CAUTION: CONSULT OPERATOR'S MANUAL BEFORE USE.			
061205-003			

### UpRight, Inc.

801 South Pine Street  
Madera, California 93637

TEL: 559-662-3900

FAX: 559-673-6184

PARTS: 1-888-UR-PARTS

PARTS FAX: 1-800-669-9884

# UpRight

Call Toll Free in U.S.A.

1-800-926-LIFT

### UpRight

Unit S1, Park West Industrial Park

Friel Avenue

Nangor Road

Dublin 12, Ireland

TEL: +353 1 620 9300

FAX: +353 1 620 9301

---

# PARTS MANUAL

This document lists and illustrates the replaceable assemblies and parts of this product, as manufactured by UpRight, Inc. Each parts list contains the component parts for that assembly.

---

## TABLE OF CONTENTS

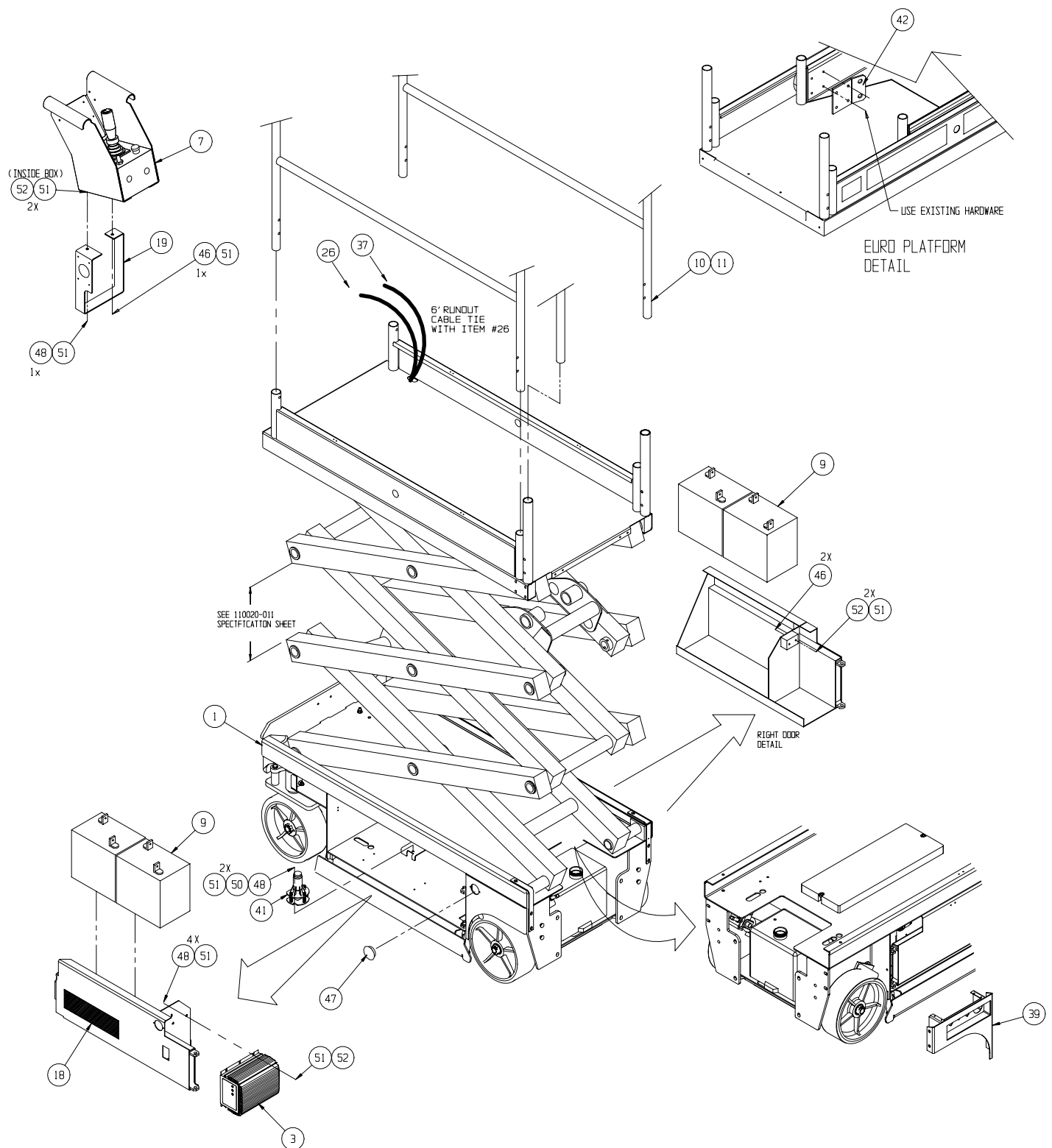
Final Assembly - MX15		Hose Kit Installation	
113000-001 .....	2	113006-000 .....	30
Final Assembly - MX19		Hydraulic Tank Assembly	
113010-001 .....	4	101152-001 .....	31
Final Assembly Wiring - MX15		Valve Block	
065607-000 .....	6	101120-122 .....	32
Final Assembly Wiring - MX19		Valve Block Assembly	
065607-001 .....	8	113052-000 .....	34
Controller Assembly		Power Unit Assembly	
066013-026 .....	10	113055-000 .....	35
PQ Controller		Drive Motor Assembly	
065512-000 .....	12	113065-000 .....	36
Lower Controls (Wheel Cover Assembly)		Steering Cylinder Assembly	
065980-005 .....	13	113051-000 .....	37
Basic Assembly - MX15		Depression Cylinder Assembly	
113001-000 .....	14	113053-000 .....	38
Basic Assembly - MX19		Overload Alarm Option	
113011-000 .....	16	065720-020 .....	39
Scissor Arm Assembly - MX15		Horn Assembly	
065605-020 .....	18	066614-020 .....	40
Scissor Arm Assembly - MX19		Hour Meter/Low Voltage Indicator	
065705-020 .....	20	066613-020 .....	41
Platform Guardrail Installation		Removable Controller Option	
065603-005 .....	22	061898-001 .....	42
Deck Extension Assembly		Label Installation - MX15	
065614-000 .....	23	065612-034 .....	44
Proximity Switch Assembly		Label Installation - MX19	
067193-001 .....	24	065712-034 .....	44
Chassis Assembly			
113002-000 .....	26		

# Final Assembly - MX15

## 113000-001

ITEM	PART	DESCRIPTION	QTY	ITEM	PART	DESCRIPTION	QTY
1	113001-000	BASIC ASSY	1	23	113102-020	PARTS MANUAL	1
2	065607-000	FINAL ASSY WIRING	1	26	065609-020	CONTROL CABLE ASSY	REF
3	069199-000	CHARGER	1	37	029435-099	WIRE AWG 14 GA 3 CONN.	37 FT.
7	066013-026	CONTROLLER ASSEMBLY	1	39	065980-005	WHEEL COVER ASSY	1
9	015796-000	BATTERY 6 V	4	41	029945-031	LEVEL SENSOR ASSY	1
10	065614-000	EXTENSION DECK	1	‡42	030714-013	HARNESS HARDPOINT	1
11	065603-005	PLATFORM/GUARDRAIL ASSY	1	46	011252-012	SCREW HHCS 1/4-20 X 1 1/2	3
14	113006-000	HOSE KIT / INST.	1	47	064462-016	HOLE PLUG 1-7/8	2
15	113007-000	HYDRAULIC SCHEMATIC	REF	48	011252-006	SCREW, 1/4-20UNC X 3/4	8
16	065616-027	ELECTRICAL SCHEMATIC	REF	50	011238-004	WASHER 1/4 LOCK	2
17	110020-011	MX SPECIFICATION SHEET	REF	51	011240-004	WASHER 1/4 STD FLAT	12
18	065712-034	LABEL KIT / INSTALLATION	1	52	011248-004	NUT HEX ESNA 1/4-20UNC	8
19	065746-002	CONTROLLER GUIDE-WIDE	1	53	115032-000	WELDMENT KIT - CHASSIS	1
20	060540-001	DOCUMENTATION KIT	1	54	115033-001	WELDMENT KIT - LINKAGE	1
21	113101-020	SERVICE MANUAL	1	55	115034-000	WELDMENT KIT - PLATFORM	1
22	113100-020	USER MANUAL	1				

‡ Reference Only - components included in paint kit.

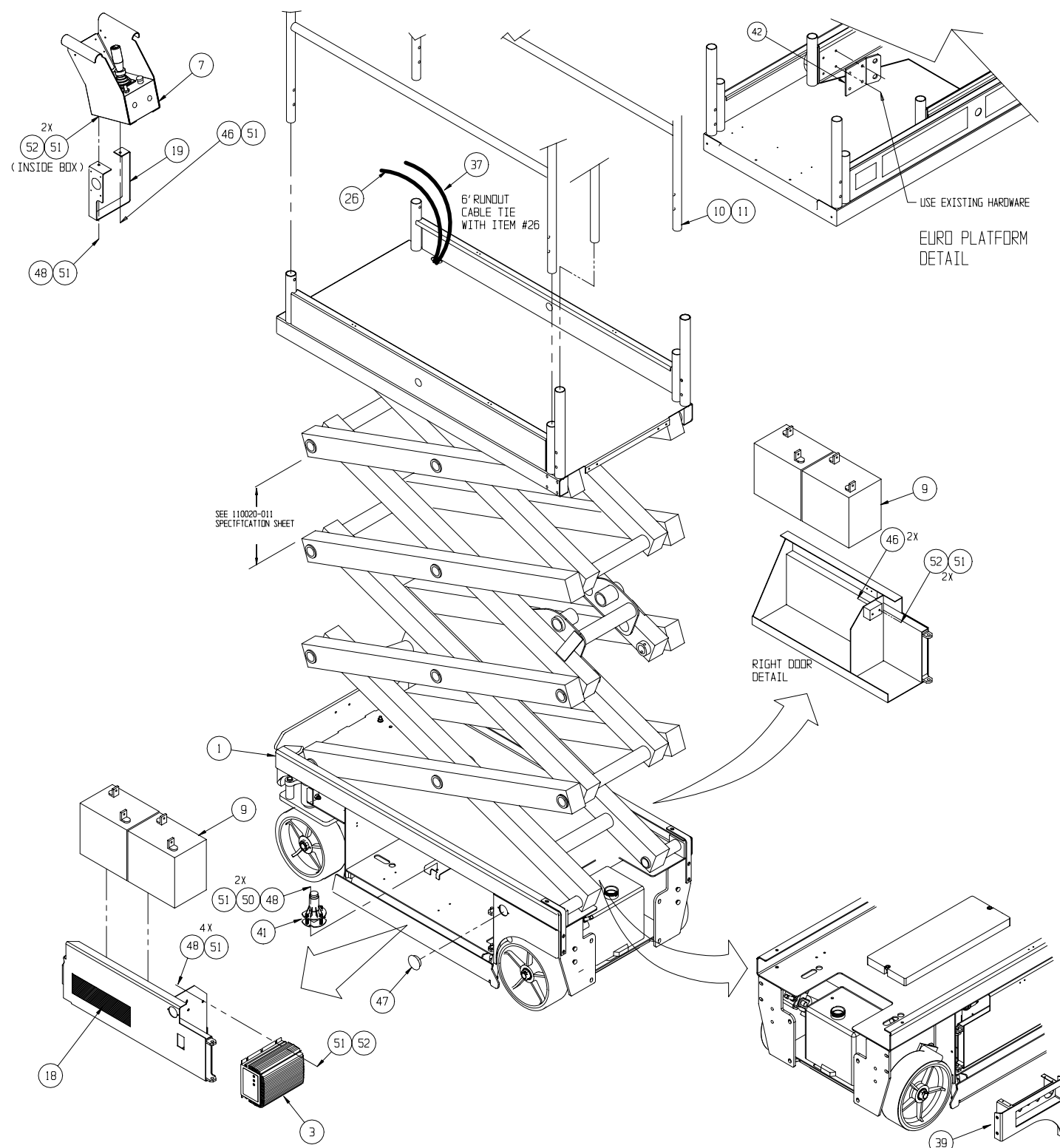


# Final Assembly - MX19

## 113010-001

ITEM	PART	DESCRIPTION	QTY	ITEM	PART	DESCRIPTION	QTY
1	113011-000	BASIC ASSY	1	27	113102-020	PARTS MANUAL	1
2	065607-001	FINAL ASSY WIRING	1	28	113100-020	USER MANUAL	1
3	069199-000	CHARGER	1	37	029435-099	WIRE AWG 14 GA 3 CONN.	37 FT.
7	066013-026	CONTROLLER ASSEMBLY	1	39	065980-005	WHEEL COVER ASSY	1
9	015796-000	BATTERY 6 V	4	41	029945-031	LEVEL SENSOR ASSY	1
10	065614-000	EXTENSION DECK	1	‡42	030714-013	HARNESS HARDPOINT	1
11	065603-005	PLATFORM/GUARDRAIL ASSY	1	46	011252-012	SCREW HHCS 1/4-20 X 1 1/2	3
14	113006-000	HOSE KIT / INST.	1	47	064462-016	HOLE PLUG 1-7/8	2
15	113007-000	HYDRAULIC SCHEMATIC	REF	48	011252-006	SCREW, 1/4-20UNC X 3/4	8
16	065616-027	ELECTRICAL SCHEMATIC	REF	50	011238-004	WASHER 1/4 LOCK	2
17	110020-011	MX SPECIFICATION SHEET	REF	51	011240-004	WASHER 1/4 STD FLAT	12
18	065712-034	LABEL KIT / INSTALLATION	1	52	011248-004	NUT HEX ESNA 1/4-20UNC	8
19	065746-002	CONTROLLER GUIDE-WIDE	1	53	115032-000	WELDMENT KIT - CHASSIS	1
20	060540-001	DOCUMENTATION KIT	1	54	115033-001	WELDMENT KIT - LINKAGE	1
21	113101-020	SERVICE MANUAL	1	55	115034-000	WELDMENT KIT - PLATFORM	1
26	065609-021	CONTROL CABLE ASSY	REF				

‡ Reference Only - components included in paint kit.



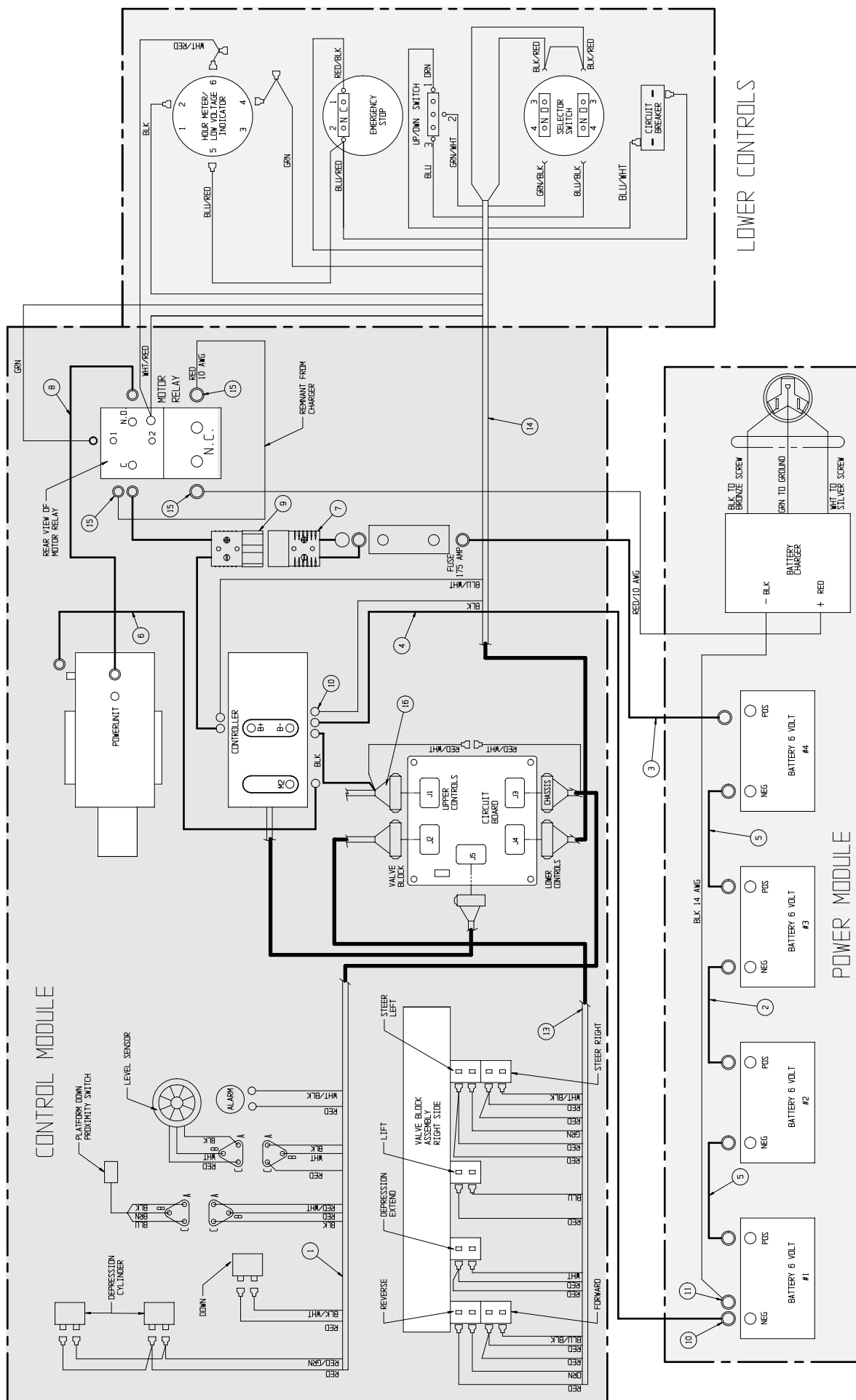
# Final Assembly Wiring - MX15

## 065607-000

ITEM	PART	DESCRIPTION	QTY
1	065943-004	WIRE HARNESS ASSY	1
2	062125-118	CABLE ASSY X 118	1
3	064195-022	CABLE ASSY X 22	1
4	064195-062	CABLE ASSY X 62	1
5	064195-015	CABLE ASSY X 15	2
6	062125-016	CABLE ASSY X 16	1
7	101182-001	CABLE ASSY W/CONNECTOR	1
8	062125-019	CABLE ASSY X 19	1

ITEM	PART	DESCRIPTION	QTY
9	101182-002	CABLE ASSY W/CONNECTOR	1
10	010154-001	COVER - BATTERY TERMINAL	10
11	029601-039	CONN. RING 5/16 10-12	3
13	065942-003	CABLE ASSY - VALVE BLOCK	1
14	067340-001	WIRE ASSY - LOWER CONTROLS	1
15	029601-021	CONN. RING 3/8 10-12	3
16	065609-020	CONTROL CABLE ASSY - MX15	1



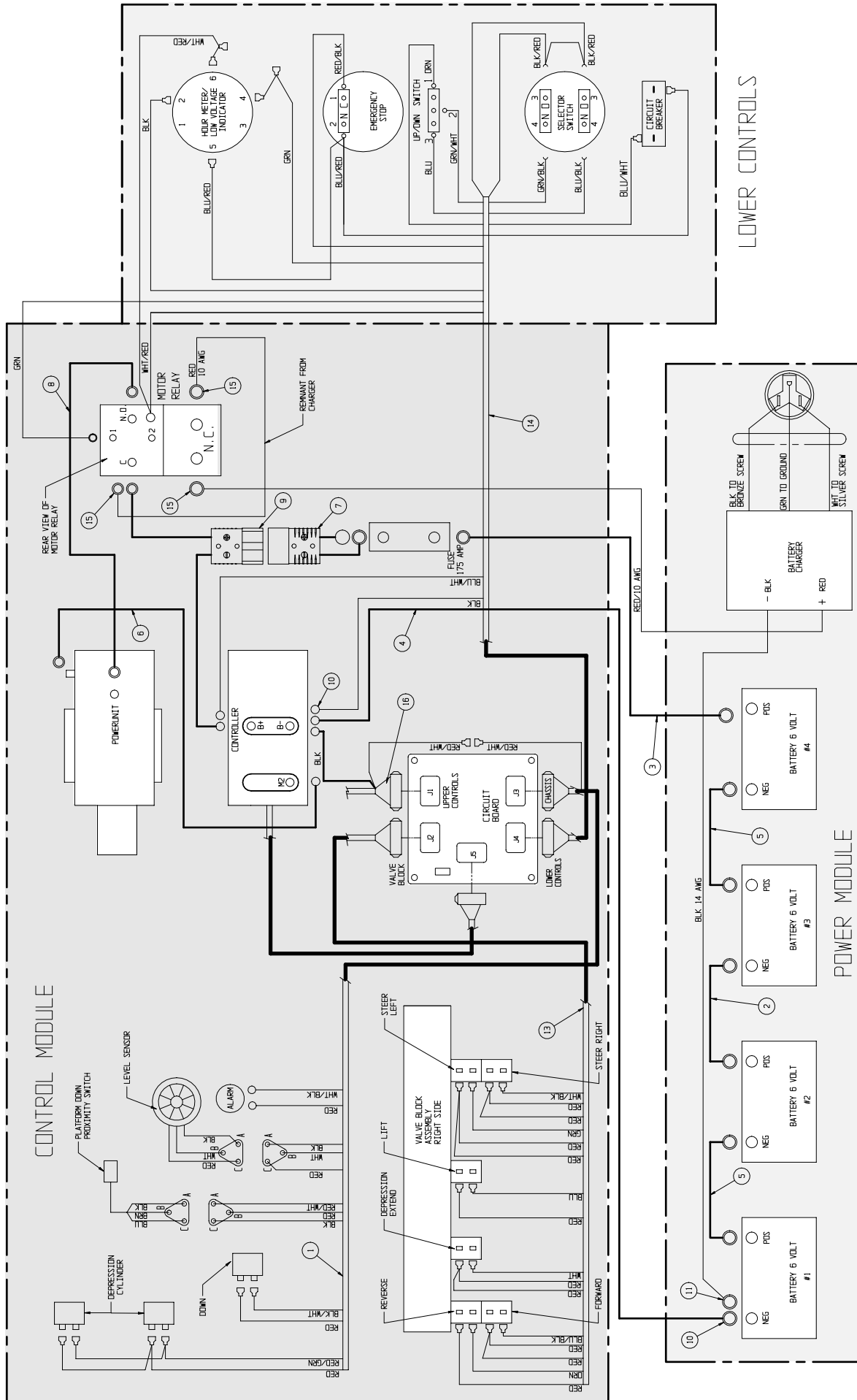


# Final Assembly Wiring - MX19

## 065607-001

ITEM	PART	DESCRIPTION	QTY
1	065943-004	WIRE HARNESS ASSY	1
2	062125-118	CABLE ASSY X 118	1
3	064195-022	CABLE ASSY X 22	1
4	064195-062	CABLE ASSY X 62	1
5	064195-015	CABLE ASSY X 15	2
6	062125-016	CABLE ASSY X 16	1
7	101182-001	CABLE ASSY W/CONNECTOR	1
8	062125-019	CABLE ASSY X 19	1

ITEM	PART	DESCRIPTION	QTY
9	101182-002	CABLE ASSY W/CONNECTOR	1
10	010154-001	COVER - BATTERY TERMINAL	10
11	029601-039	CONN. RING 5/16 10-12	3
13	065942-003	CABLE ASSY - VALVE BLOCK	1
14	067340-001	WIRE ASSY - LOWER CONTROLS	1
15	029601-021	CONN. RING 3/8 10-12	3
16	065609-021	CONTROL CABLE ASSY - MX19	1



# Controller Assembly

## 066013-026

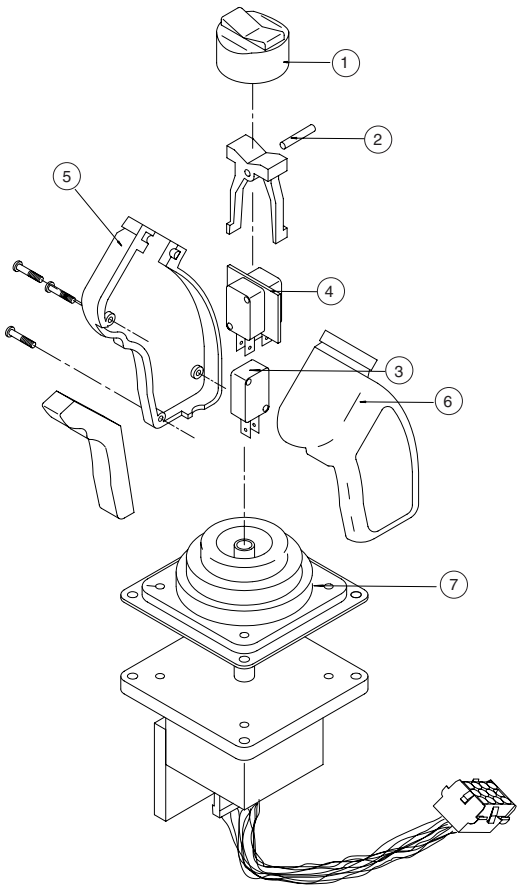
ITEM	PART	DESCRIPTION	QTY
1	101188-010	BOX CONTROLLER	1
2	101223-003	COVER CONTROLLER	1
3	066805-002	SWITCH SELECTOR-2 POSITION	1
4	066805-006	SWITCH PUSH BUTTON	1
5	066805-011	CONTACT NC	1
6	066805-012	CONTACT NO - NC	1
7	065512-000	CONTROLLER PQ	1
8	063926-011	PLUG CAPLUG #CCF 1-14-20	1
9	068889-099	WEATHERSTRIP	2.3 FT.

ITEM	PART	DESCRIPTION	QTY
10	063951-002	RELAY 24V	1
11	011761-004	SCREW MACH SLOTTED TRUSS HD #10-24 X 1/2	4
12	113056-000	RELAY, TIME DELAY	1
13	101240-004	CABLE ASSY CONTROLLER PPE	1
14	063956-003	CONN 12 PIN	1
16	029925-010	CONN CABLE	1
17	029939-003	LOCKNUT 3/4	1
18	067990-020	4 PIN RECEPTACLE	1
19	067990-023	4 PIN WEDGE	1



**PQ Controller**  
**065512-000**

ITEM	PART NO.	DESCRIPTION	QTY
1	063953-001	CAP, RUBBER	1
2	065512-013	ROCKER, PIN	1
3	063953-007	SWITCH, INTERLOCK	1
4	065512-015	SWITCH, STEERING	1
5	065512-016	HANDLE HALF, RIGHT	1
6	065512-017	HANDLE HALF, LEFT	1
7	065512-018	BOOT, HANDLE	1

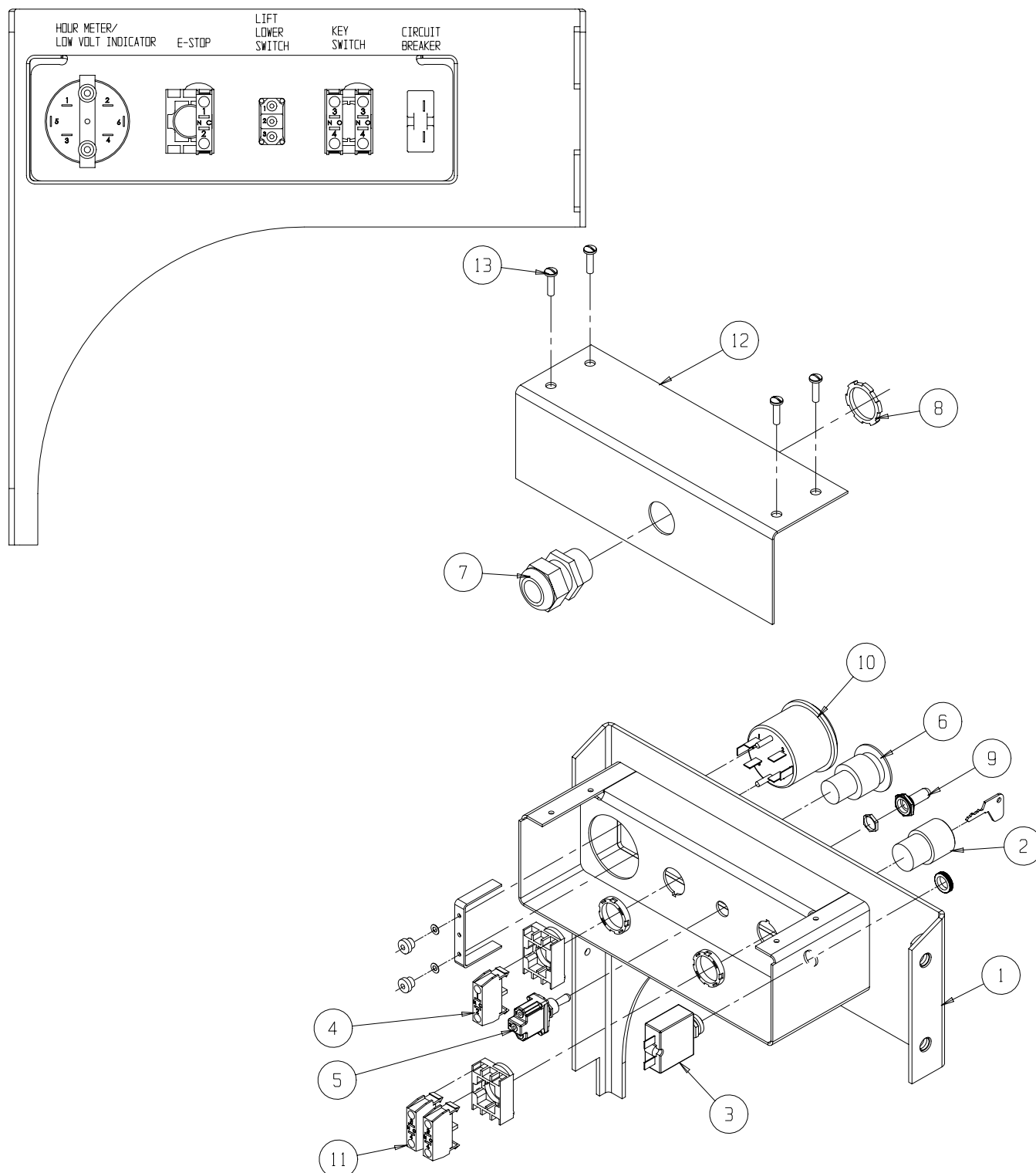


# Lower Controls (Wheel Cover Assembly)

## 065980-005

ITEM	PART NO.	DESCRIPTION	QTY
1	065979-001	WHEEL COVER WELDMENT	1
2	066805-004	KEYSWITCH 3 POS	1
3	068582-005	CIRCUIT BREAKER	1
4	066805-011	SWITCH CONTACT BLOCK NC	1
5	012798-000	SWITCH TOGGLE	1
6	066805-006	SWITCH HEAD MUSHROOM	1
7	029925-010	CONNECTOR CABLE	1

ITEM	PART NO.	DESCRIPTION	QTY
8	029939-003	LOCKNUT 3/4 NPT	1
9	029872-000	BOOT SWITCH COVER	1
10	029959-000	HOURLMETER / LOW VOLT	1
11	066805-010	CONTACT BLOCK N.O.	2
12	065978-000	COVER	1
13	011811-006	SCREW SLFTP F HWH 10-32 X 3/4	4



# Basic Assembly - MX15

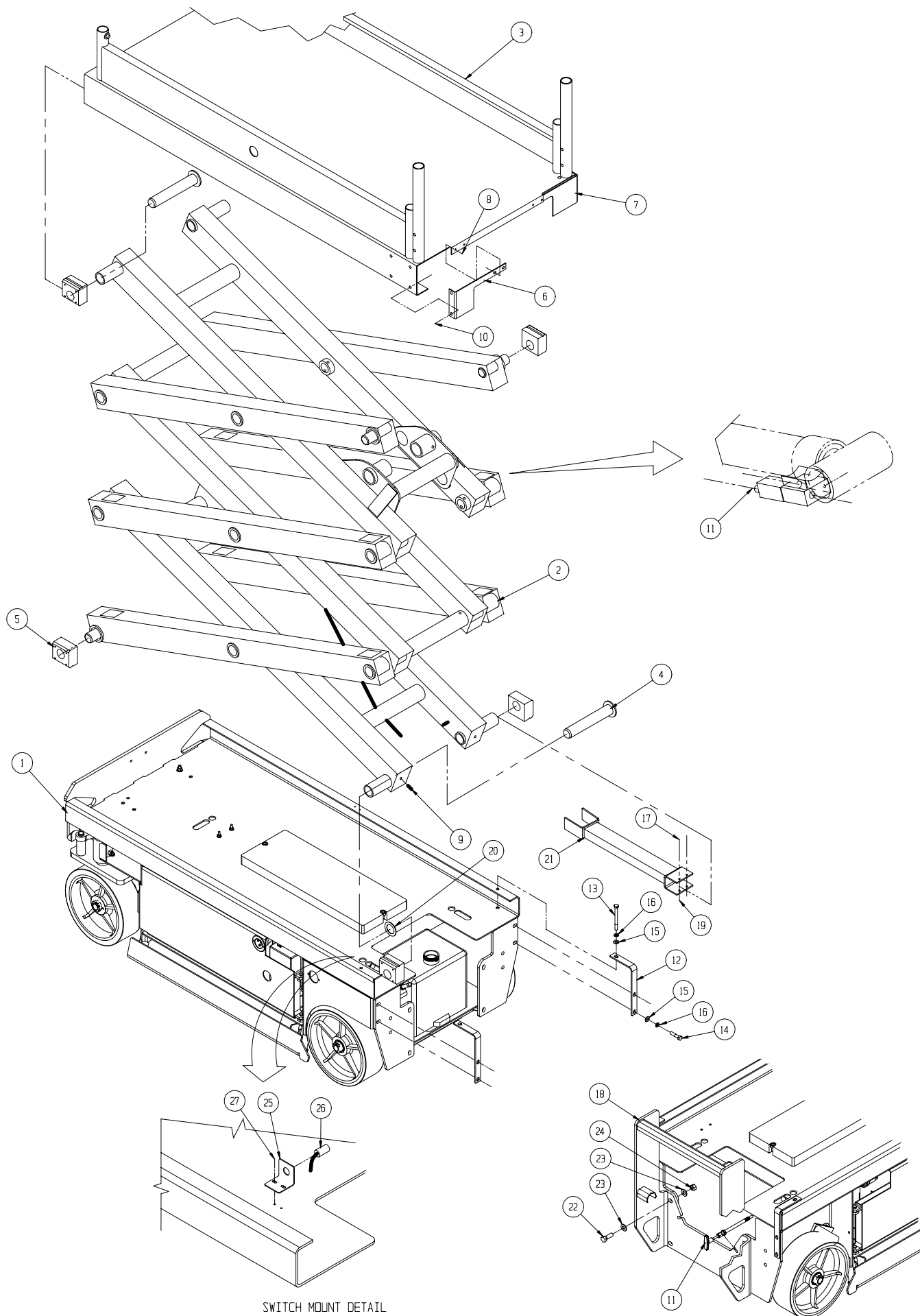
## 113001-000

ITEM	PART	DESCRIPTION	QTY	ITEM	PART	DESCRIPTION	QTY
1	113002-000	CHASSIS ASS'Y	1	15	011240-006	WASHER 3/8 STD FLAT	4
2	065605-020	SCISSOR ARM ASS'Y- X15	1	16	011238-006	LOCK WASHER - 3/8" SPLIT RING	6
†3	066250-001	PLATFORM WELDMENT	1	17	011829-022	CARRIAGE BOLT 1/4-20 X 2-3/4 PLATED	2
4	065698-000	LOWER PIVOT PIN WELDMENT	4	†18	066307-006	LADDER WELDMENT - MX15	1
5	065726-000	SLIDE PAD	8	19	011248-004	LOCKNUT 1/4-20 UNC ESNA	2
‡6	065728-000	DECK BRACKET L.H.	1	20	011786-007	BUSHING - MACHINERY	2
‡7	065727-000	DECK BRACKET R.H.	1	†21	065764-000	SCISSOR CHOCK WELDMENT X15/19	1
8	014027-006	SCREW HHD SLFTP 1/4-28 x 3/4	4	22	011256-012	SCREW HHC 1/2-13UNC X 1 1/2	4
9	011739-020	ROLLPIN 3/8 DIA. x 2 1/2	4	23	011240-008	WASHER 1/2 STD FLAT	8
10	014066-008	SCREW SLFTP 1/4-AB x 1	16	24	011248-008	LOCKNUT 1/2-13 UNC ESNA	4
11	065754-006	EMERGENCY LOWERING CABLE	1	‡25	067318-000	SWITCH BRACKET	1
†12	065937-001	BEARING RETENTION ANGLE	2	26	067193-001	SWITCH ASSY	1
13	011254-034	SCREW HHC 3/8-16UNC X 4 1/4	2	27	011252-006	SCREW - 1/4-20 UNC X 3/4	2
14	011254-014	SCREW HHC 3/8-16UNC X 1 3/4	4				

† Reference Only - components included in weldment kit.

‡ Reference Only - components included in paint kit.





SWITCH MOUNT DETAIL

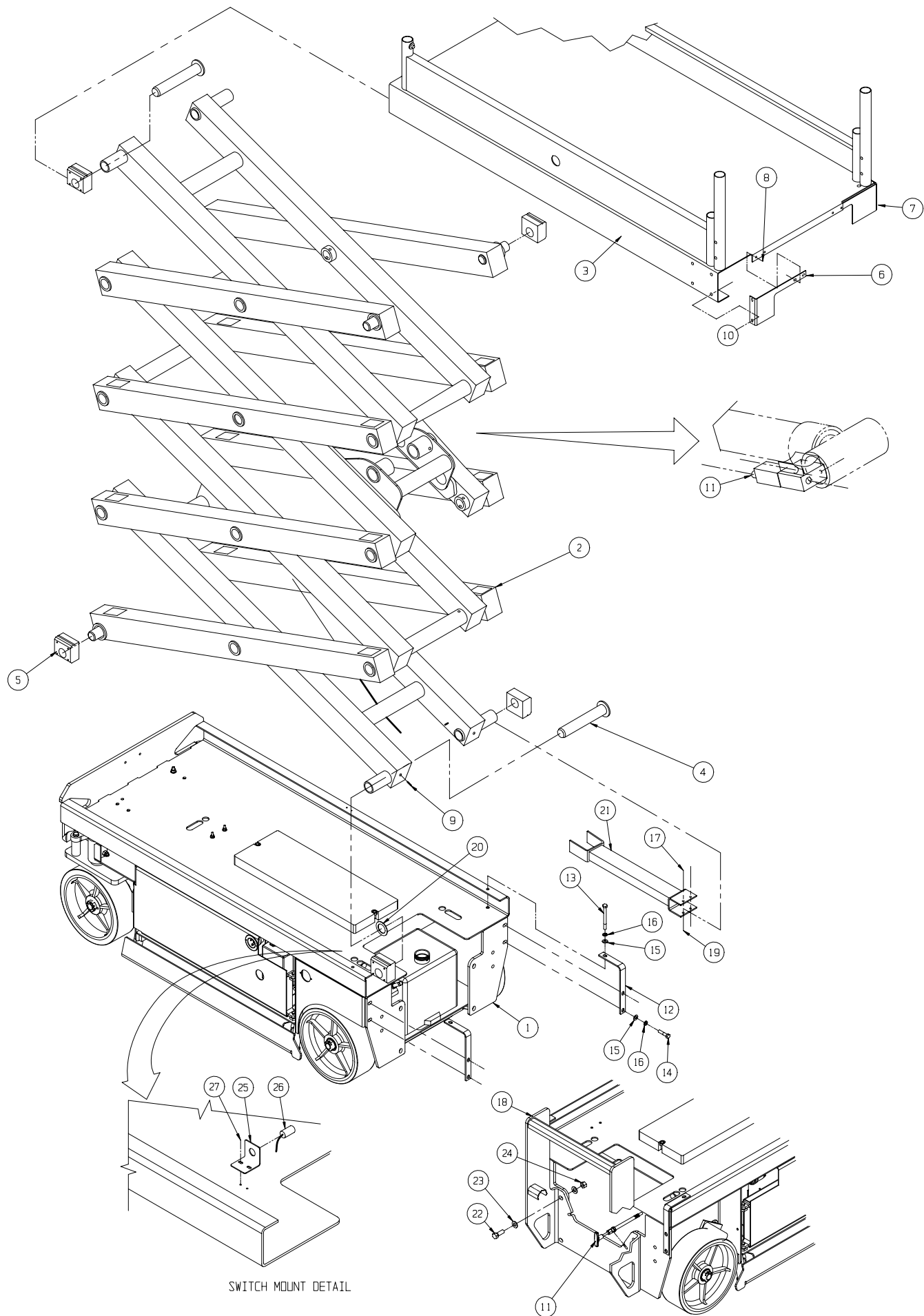
# Basic Assembly - MX19

## 113011-000

ITEM	PART	DESCRIPTION	QTY	ITEM	PART	DESCRIPTION	QTY
1	113002-000	CHASSIS ASS'Y	1	15	011240-006	WASHER 3/8 STD FLAT	4
2	065705-020	SCISSOR ARM ASS'Y X19	1	16	011238-006	LOCK WASHER - 3/8" SPLIT RING	6
†3	066250-001	PLATFORM WELDMENT	1	17	011829-022	CARRIAGE BOLT 1/4-20 X 2-3/4 PLATED	2
4	065698-000	LOWER PIVOT PIN WELDMENT	4	†18	066307-005	LADDER WELDMENT	1
5	065726-000	SLIDE PAD	8	19	011248-004	LOCKNUT 1/4-20 UNC ESNA	2
‡6	065728-000	DECK BRACKET L.H.	1	20	011786-007	BUSHING - MACHINERY	2
‡7	065727-000	DECK BRACKET R.H.	1	†21	065764-000	SCISSOR CHOCK WELDMENT X15/19	1
8	014027-006	SCREW HHD SLFTP 1/4-28 x 3/4	4	22	011256-012	SCREW HHC 1/2-13UNC X 1 1/2	4
9	011739-020	ROLLPIN 3/8 DIA. x 2 1/2	4	23	011240-008	WASHER 1/2 STD FLAT	8
10	014066-008	SCREW SLFTP 1/4-AB x 1	16	24	011248-008	LOCKNUT 1/2-13 UNC ESNA	4
11	065754-006	EMERGENCY LOWERING CABLE	1	‡25	067318-000	SWITCH BRACKET	1
†12	065937-001	BEARING RETENTION ANGLE	2	26	067193-001	SWITCH ASSY	1
13	011254-034	SCREW HHC 3/8-16UNC X 4 1/4	2	27	011252-006	SCREW - 1/4-20 UNC X 3/4	2
14	011254-014	SCREW HHC 3/8-16UNC X 1 3/4	4				

† Reference Only - components included in weldment kit.

‡ Reference Only - components included in paint kit.






# Scissor Arm Assembly - MX15

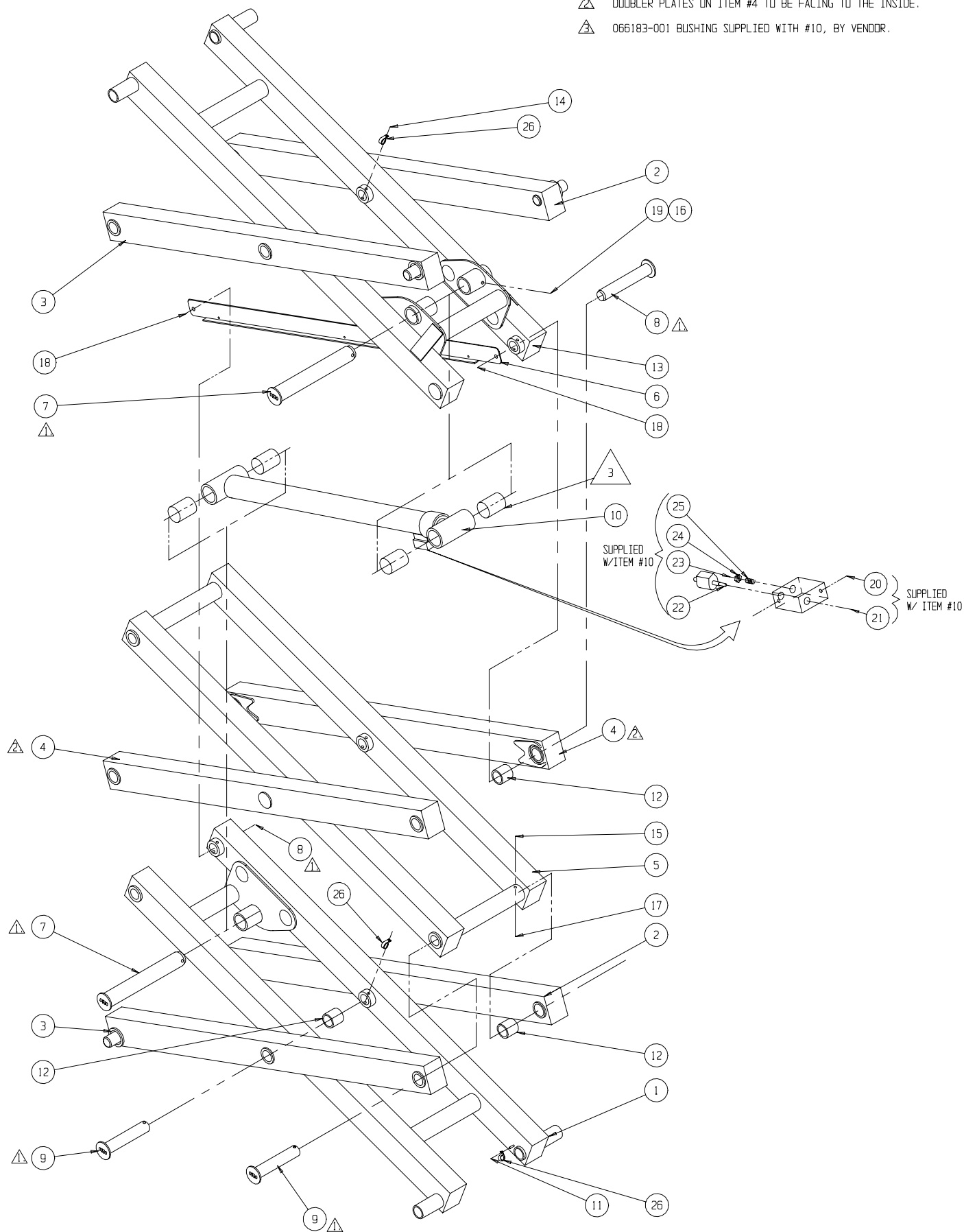
## 065605-020

ITEM	PART	DESCRIPTION	QTY	ITEM	PART	DESCRIPTION	QTY
†1	065640-000	INNER ARM WELDMENT	1	14	011253-024	SCREW 5/16-18UNC HHC X 3	3
†2	065671-000	OUTER BEAM EWLDMENT R.H.	2	15	011253-022	SCREW 5/16-18UNC HHC X 2 3/4	11
†3	065672-000	OUTER BEAM WELDMENT L.H.	2	16	011254-026	SCREW 3/8-16UNC HHC X 3 1/4	2
†4	065675-001	OUTER BEAM WELDMENT	2	17	011248-005	LOCKNUT 5/16-18UNC HEX	14
†5	065677-000	INNER CENTER BEAM WELDMENT	1	19	065688-000	GUARD RIVET	2
‡6	065687-000	CABLE GUIDE	1	21	011248-006	LOCKNUT 3/8-16UNC HEX	2
7	065696-000	CYLINDER PIN WELDMENT	2	22	012004-004	PLUG #4	REF
8	065697-000	PIN KEEPER WELDMENT	2	23	012004-006	PLUG #6	REF
9	065920-000	PIVOT PIN WELDMENT	12	25	066179-000	VALVE	REF
10	065372-021	LIFT CYLINDER ASSY.	1	26	011941-005	FITTING 6MB-6MJ ST	REF
*	065372-012	SEAL KIT, LIFT CYLINDER	REF	27	015919-001	ORIFICE #840	REF
11	011248-004	LOCKNUT 1/4-20UNC HEX	1	28	05133-000	SPRING	REF
12	066183-002	BUSHING	14	29	013919-009	CLAMP	3
†13	065640-001	INNER ARM WELDMENT	1				

† Reference Only - components included in weldment kit.

‡ Reference Only - components included in paint kit.

- NOTES:  COAT PINS ⑦ ⑧ ⑨ WITH NEVER SIEZE BEFORE INSTALLING.  
 DOUBLER PLATES ON ITEM #4 TO BE FACING TO THE INSIDE.  
 066183-001 BUSHING SUPPLIED WITH #10, BY VENDOR.



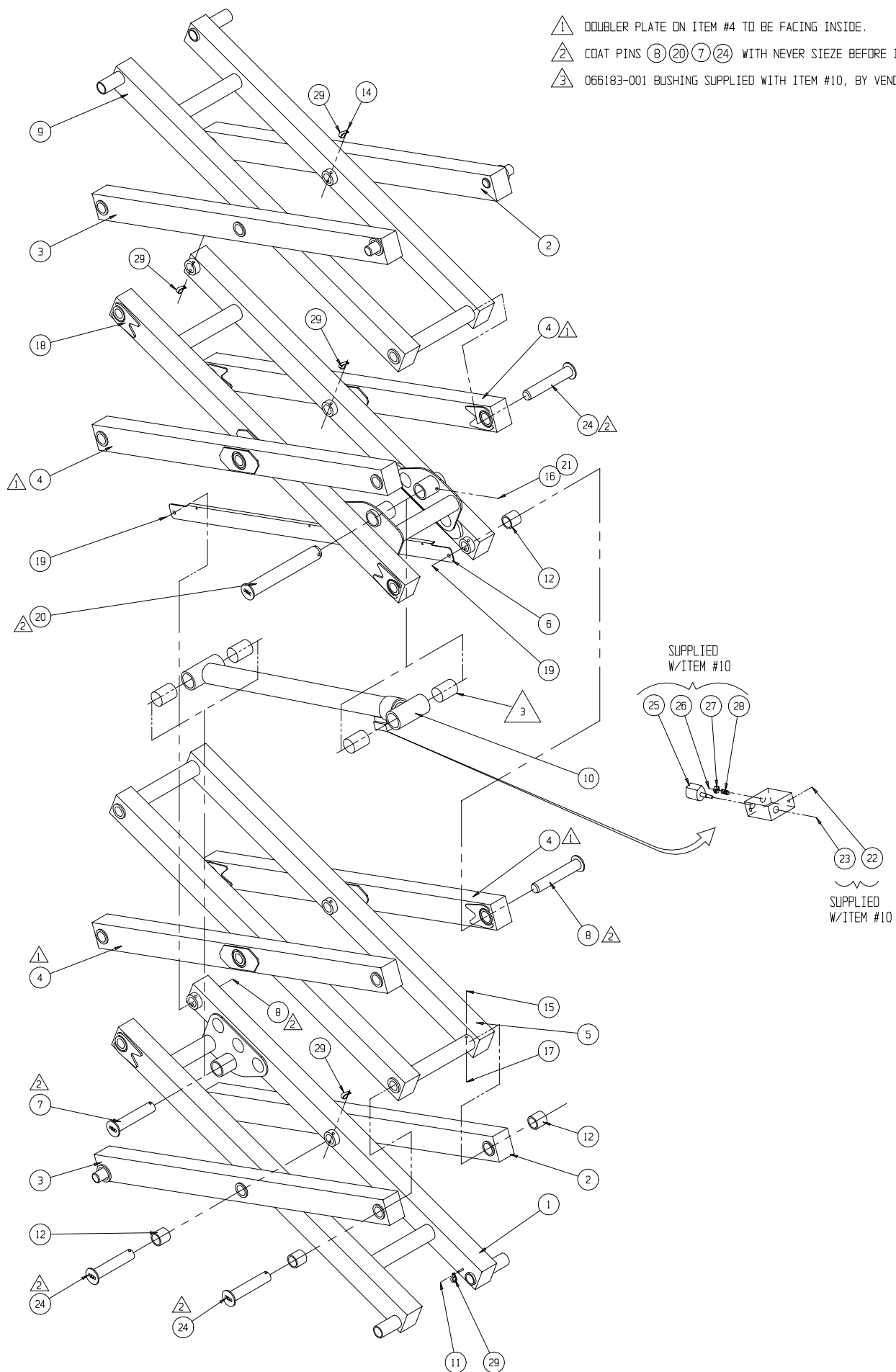
# Scissor Arm Assembly - MX19

## 065705-020

ITEM	PART	DESCRIPTION	QTY	ITEM	PART	DESCRIPTION	QTY
†1	065640-001	INNER ARM WELDMENT	1	16	011254-026	SCREW 3/8-16UNC HHC X 3 1/4	2
†2	065671-000	OUTER BEAM WELDMENT R.H.	2	17	011248-005	LOCKNUT 5/16-18UNC HEX	20
†3	065672-000	OUTER BEAM WELDMENT L.H.	2	†18	065722-000	INNER BEAM WELDMENT	1
†4	065675-000	OUTER BEAM WELDMENT	4	19	065688-000	GUARD RIVET	2
†5	065677-000	INNER CENTER BEAM WELDMENT	1	20	065750-000	CYLINDER PIN WELDMENT	1
‡6	065687-000	CABLE GUIDE	1	21	011248-006	LOCKNUT 3/8-16UNC HEX	2
7	065696-000	CYLINDER PIN WELDMENT	1	22	012004-004	PLUG #4	REF
8	065697-000	PIN KEEPER WELDMENT	2	23	012004-006	PLUG #6	REF
†9	065721-000	UPPER BEAM WELDMENT	1	24	065920-000	PIVOT PIN WELDMENT	18
10	065372-021	LIFT CYLINDER ASSY.	1	25	066179-000	VALVE	REF
*	065372-012	SEAL KIT, LIFT CYLINDER	REF	26	011941-005	FITTING 6MB-6MJ ST	REF
11	011248-004	LOCKNUT 1/4-20UNC HEX	1	27	015919-001	ORIFICE	REF
12	066183-002	BUSHING	20	28	05133-000	SPRING	REF
14	011253-024	SCREW 5/16-18UNC HHC X 3	4	29	013919-009	CLAMP	4
15	011253-022	SCREW 5/16-18UNC HHC X 2 3/4	16				

† Reference Only - components included in weldment kit.

‡ Reference Only - components included in paint kit.



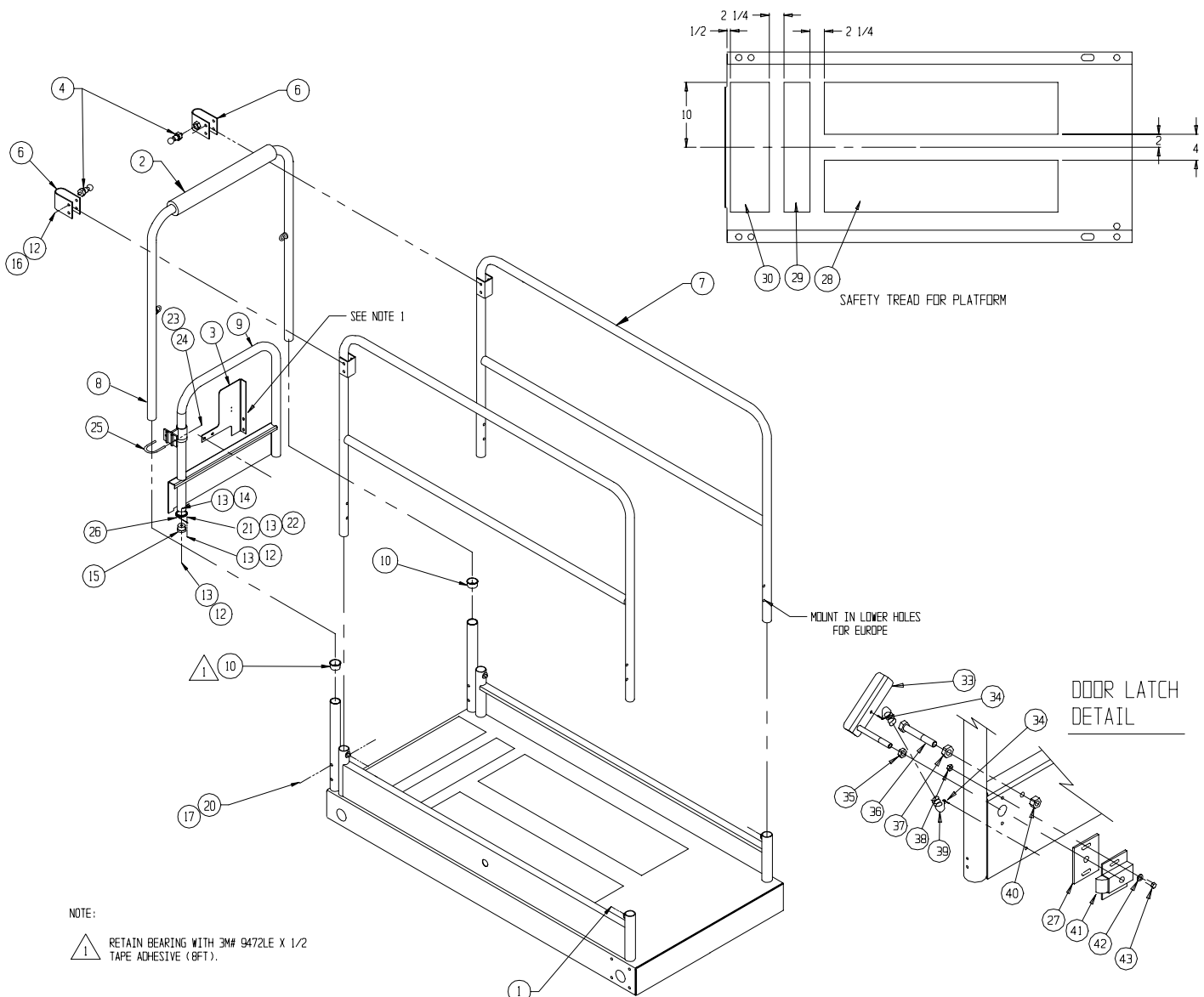
# Platform Guardrail Installation

## 065603-005

ITEM	PART	DESCRIPTION	QTY
1	066171-003	TAP BOLT 3/8 X 2 (FULL THREAD)	4
2	066692-022	FOAM TUBING	1
‡3	065728-001	DECK BRACKET L.H.	1
4	03570-000	RETAINING PIN ASSY	2
‡6	066498-000	WELDMENT, GATE LATCH	2
‡7	066257-007	WELDMENT SIDE RAIL	2
‡8	066261-001	WELDMENT, END RAIL	1
‡9	065780-001	GATE WELDMENT	1
10	065987-000	CAPLUG BEARING	2
12	011248-005	NUT 5/16-18	6
13	011240-005	WASHER 5/16 STD FLAT	4
14	011253-016	SCREW 5/16-18 HHC X 2	1
15	065784-001	DOOR SLIDE	1
16	011253-018	SCREW 5/16-18 HHC X 2 1/4	4
17	011254-018	SCREW 3/8-16 HHC X 2 1/4	2
20	011248-006	NUT 3/8-16 HEX	2
21	011250-005	NUT 5/16UNC HEX	1
22	011253-006	SCREW 5/16-18UNC X 3/4	1
23	011240-004	WASHER 1/4 STD FLAT	2

ITEM	PART	DESCRIPTION	QTY
24	011248-004	LOCKNUT 1/4-20UNC HEX	2
25	027899-000	U-BOLT	1
26	066526-001	SPRING	1
27	062791-020	SPACER SLAM LATCH	1
28	060830-002	SAFETY WALK 8 X 36	2
29	060830-001	SAFETY WALK 4 X 20	1
30	060830-003	SAFETY WALK 6 X 21	1
‡33	030745-002	ACTUATOR WELDMENT	1
34	011753-006	COTTER PIN 1/8 X 3/4	2
35	063947-008	NUT HEX 8MM X 1.25	1
36	011254-020	SCREW 3/8-16 HHC X 2 1/2	1
37	020495-012	NUT HEX JAM 3/8-16UNC	1
38	011248-003	NUT HEX ESNA 10-32	2
39	012097-018	EXTENSION SPRING	1
40	011248-006	NUT HEX ESNA 3/8-16	1
41	062791-000	SLAM LATCH	1
42	011240-003	WASHER STD FLAT #10	2
43	011275-004	SCREW 10-32 HHC X 1/2	2

‡ Reference Only - components included in paint kit.





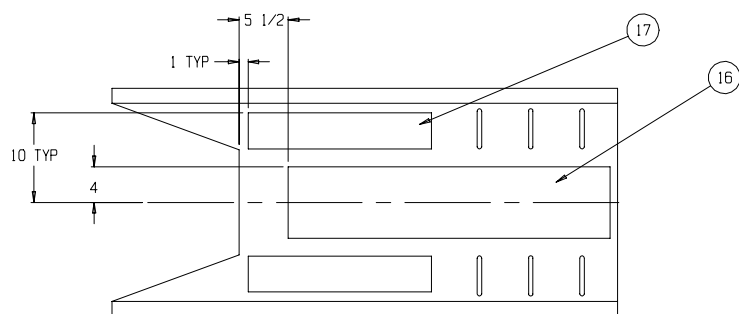
# Deck Extension Assembly

## 065614-000

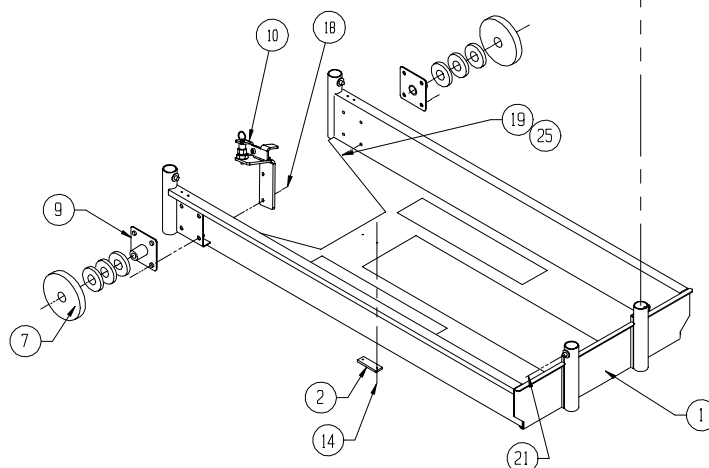
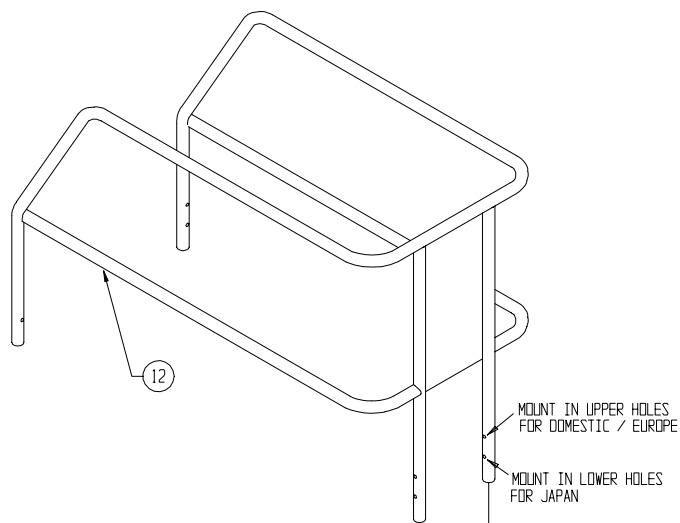
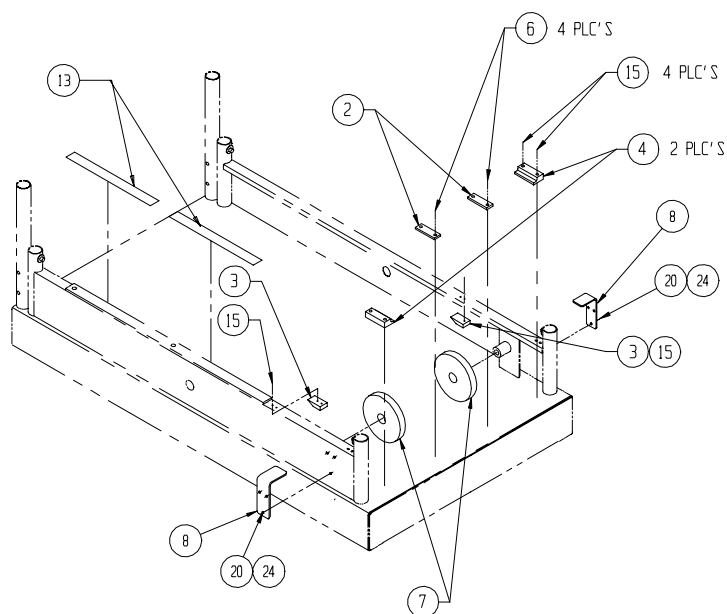
ITEM	PART	DESCRIPTION	QTY	ITEM	PART	DESCRIPTION	QTY
†1	066251-001	WELDMENT DECK EXT.	1	14	026553-004	RIVET 3/16 DIA X 3/8 GRIP	2
2	066198-000	WEAR PAD	3	15	026553-008	RIVET 3/16 DIA X 1/2 GRIP	8
3	066193-000	STOP	2	16	060830-002	SAFETY WALK 8 X 36	1
4	066176-000	WEAR PAD	2	17	060830-001	SAFETY WALK 4 X 20	2
6	026553-002	RIVET 3/16 DIA X .126-.250	4	18	011254-016	SCREW HHC 3/8-16 X 2	2
7	066195-000	PLATFORM ROLLER	4	19	011254-014	SCREW HHC 3/8-16 X 1 3/4	6
‡8	066407-011	BRACKET	2	20	011252-006	SCREW HHC 1/4-20 X 3/4	8
†9	066256-000	WELDMENT ROLLER MOUNT	2	21	066171-003	BOLT TAP 3/8-16UNC X 2	4
10	067185-000	WELDMENT DECK STOP	1	24	011240-004	WASHER 1/4 FLAT	16
†12	066260-001	WELDMENT EXT. RAIL X15	1	25	011238-006	WASHER 3/8 LOCK	8
13	065988-099	TAPE UHMW 1"	FT 3	26	014996-020	WASHER SAE 1-1/4 ZINC PLATED	6

† Reference Only - components included in weldment kit.

‡ Reference Only - components included in paint kit.



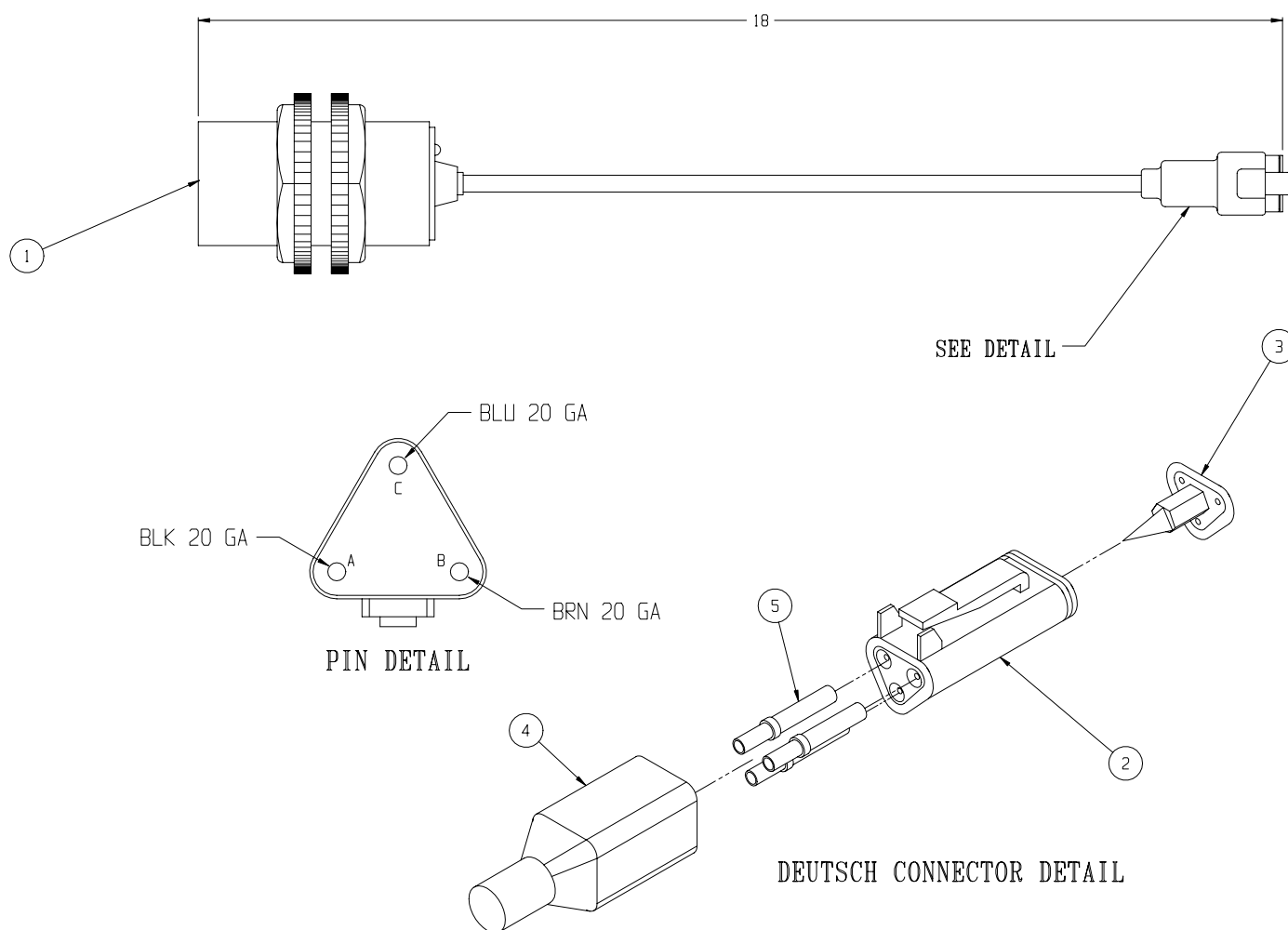
SAFETY TREAD FOR ROLL OUT DECK



# Proximity Switch Assembly

## 067193-001

ITEM	PART	DESCRIPTION	QTY
1	REF.	PROX. SWITCH, LOCON IKCT3014	1
2	067456-000	CONNECTOR, DEUTSCH #DT06-3S-P012	1
3	067456-002	LOCKING WEDGE, DEUTSCH #W3S-P012	1
4	067456-005	BOOT, DEUTSCH #DT3S-BT	1
5	068762-003	CONTACT, DEUTSCH #0462-201-16141	3



---

**NOTES:**

---

# Chassis Assembly

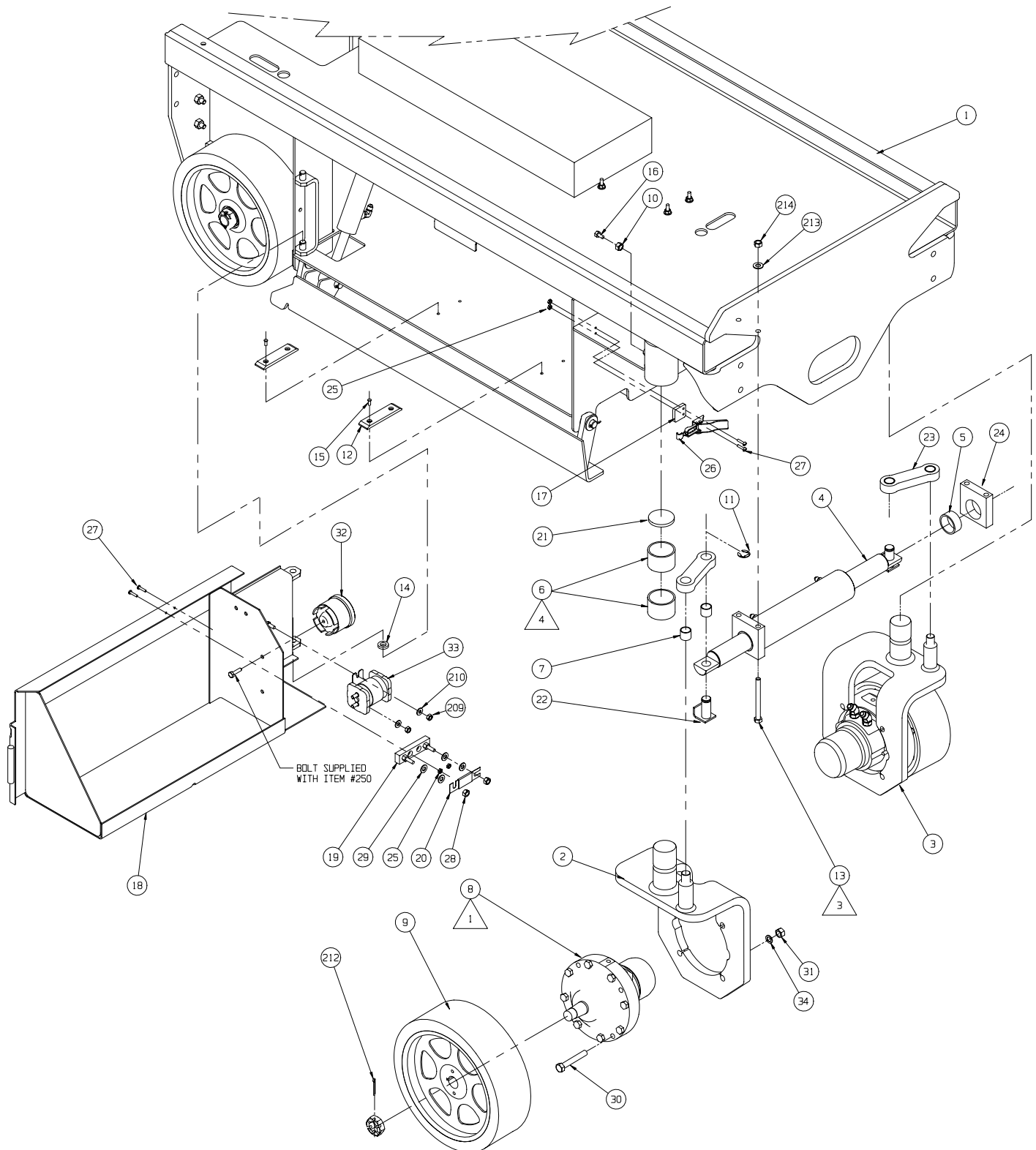
## 113002-000

ITEM	PART	DESCRIPTION	QTY	ITEM	PART	DESCRIPTION	QTY
†1	065620-025	CHASSIS WELDMENT	1	†18	065650-001	TRAY WELDMENT R.H. X15/19	1
†2	113063-000	YOKE WELDMENT R.H.	1	19	010149-000	FUSE BLOCK	1
†3	113064-000	YOKE WELDMENT L.H.	1	20	010148-001	FUSE 175 AMP	1
4	113051-000	STEERING CYLINDER ASSEMBLY	1	21	065733-000	THRUST PAD 1/4 UHMW	2
5	027931-072	BEARING	2	†22	065800-000	WELDMENT, STEER PIN	2
6	027931-059	BEARING	4	‡23	065731-000	STEER LINK X15/19	2
7	027931-022	BEARING	4	‡24	065732-000	STEER GUIDE	2
8	113065-000	DRIVE MOTOR ASSEMBLY	2	25	011248-002	LOCK NUT 8-32	6
9	065743-005	DRIVE WHEEL	2	26	005299-000	LATCH TOGGLE	2
10	011273-006	NUT HEX 3/8-16 JAM	2	27	011708-006	SCREW MACH RD HD 8-32 x 3/4	6
11	013315-010	RING, RETAINING "E"	2	28	011248-005	LOCK NUT 5/16-18	2
12	063728-001	SLIDE BLOCK	4	29	011240-005	WASHER FLAT STD 5/16	4
13	011254-032	SCREW HHC 3/8-16 x 4	4	30	011255-028	SCREW HHC 7/16-14 UNC	8
14	011782-010	THRUST WASHER 1/2 X 7/8 X 3/16 LG	2	31	011248-007	LOCK NUT 7/16-14	8
15	026553-004	RVT POP 3/16 DIA. .25-.38 GRIP	8	32	066807-001	ALARM DUAL TONE	1
16	011705-016	SCREW SET 3/8-16 x 1 HEX SOC	2	33	010122-001	SOLENOID RELAY, MOTOR	1
‡17	064754-000	SPACER LATCH	2	34	011239-007	WASHER FLAT 7/16 ASTM	8

† Reference Only - components included in weldment kit.

‡ Reference Only - components included in paint kit.

## Drawing #1 of 3



## NOTES:

1. 1"-20 UNF SLOTTED NUT & 1/8" COTTER PIN INCLUDED WITH (ITEM 8) DRIVE MOTOR. CLEAN MOTOR SHAFT AND HUB BORE LUBRICATE NUT FACE AND THREADS. TORQUE NUTS TO 75 ±5 FT.-LBS. AFTER TORQUEING NUTS, MASK AROUND NUT AND COTTER PIN AND PAINT NUT, COTTER PIN, AND SHAFT SILVER

2. WHEN INSTALLING REAR WHEELS (ITEM 203), TIGHTEN CASTLE NUTS SNUGLY, THEN BACK-OFF NUT UNTIL WHEEL TURNS FREELY. INSTALL COTTER PIN

3. INSTALL BOLTS AS SHOWN TO REDUCE HYDRAULIC HOSE DAMAGE

4. LOCKTITE (80 GREEN) BEARINGS (ITEM 6) TO CHASSIS

5. UNLESS OTHERWISE NOTED, TORQUE FASTENERS PER UPRIGHT SPEC. #105, TORQUE FITTINGS PER UPRIGHT SPEC #106

6. SEVCON DIPP SWITCH SETTINGS BELOW.

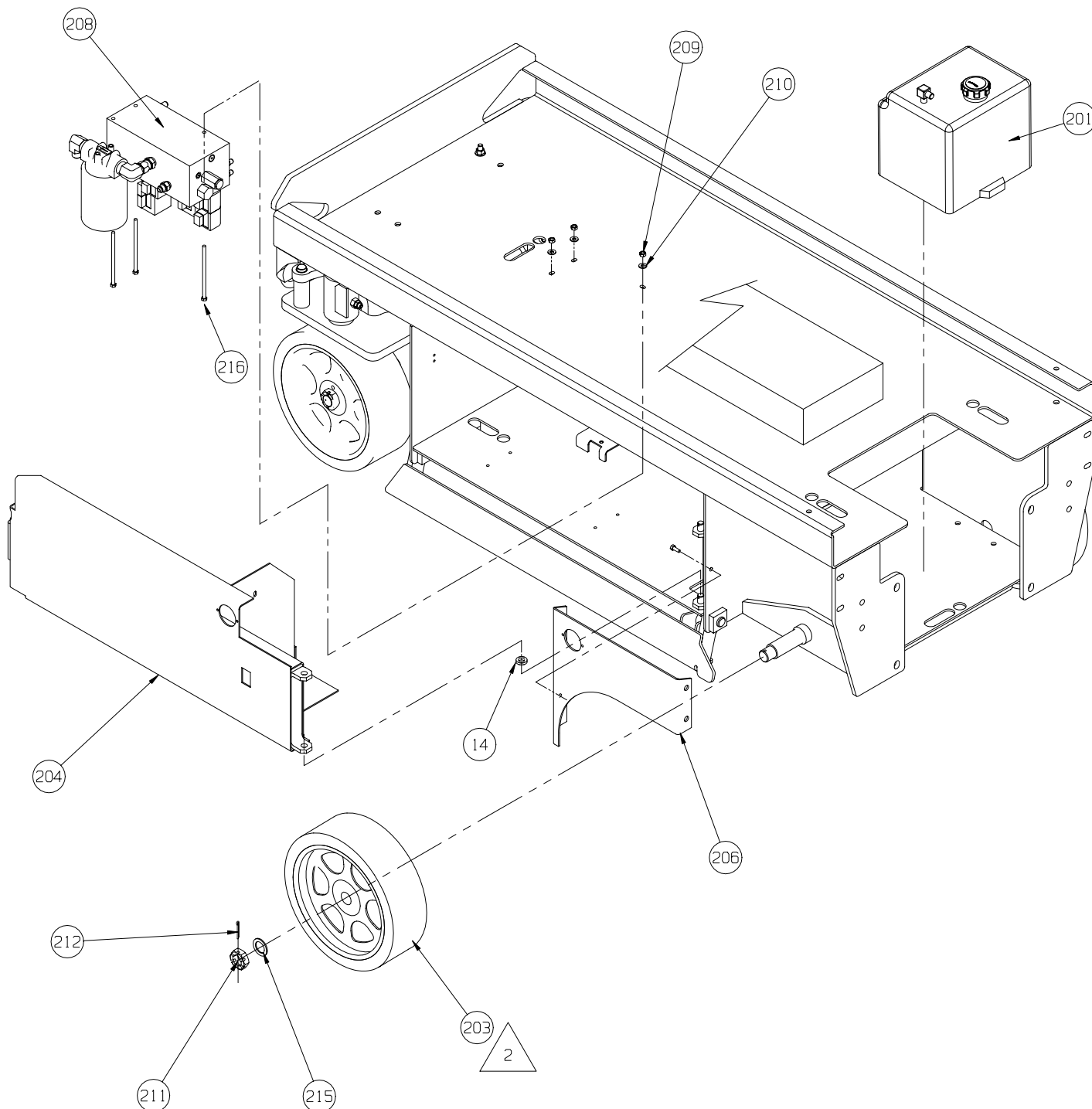
SW1	2	3	4	5	6	7	8
OFF	OFF	OFF	ON	OFF	ON	OFF	ON

**Drawing #2 of 3**

ITEM	PART	DESCRIPTION	QTY
201	101152-001	HYDRAULIC TANK ASS'Y X15	1
203	065744-021	IDLER WHEEL ASSEMBLY	2
†204	065657-002	TRAY WELDMENT L.H.	1
205	011254-010	SCREW HHC 3/8-16 X 1 1/4	8
†206	065979-002	WHEEL COVER WELDMENT L.H.	1
207	065270-000	FORKLIFT POCKET	1
208	113052-000	VALVE BLOCK ASSEMBLY	1
209	011248-004	LOCK NUT 1/4-20	11

ITEM	PART	DESCRIPTION	QTY
210	011240-004	WASHER FLAT STD 1/4	9
211	015945-016	NUT SLOTTED HEX JAM 1-14 UNF	2
212	011754-012	COTTER PIN 5/32 x 1-1/2	4
213	011240-006	WASHER FLAT STD 3/8	20
214	011248-006	LOCK NUT 3/8-16	14
215	063329-008	WASHER, FLAT 1" I.D. 1 1/2" O.D.	2
216	011252-040	SCREW HHC 1/4-20 UNC X 5	3

† Reference Only - components included in weldment kit.

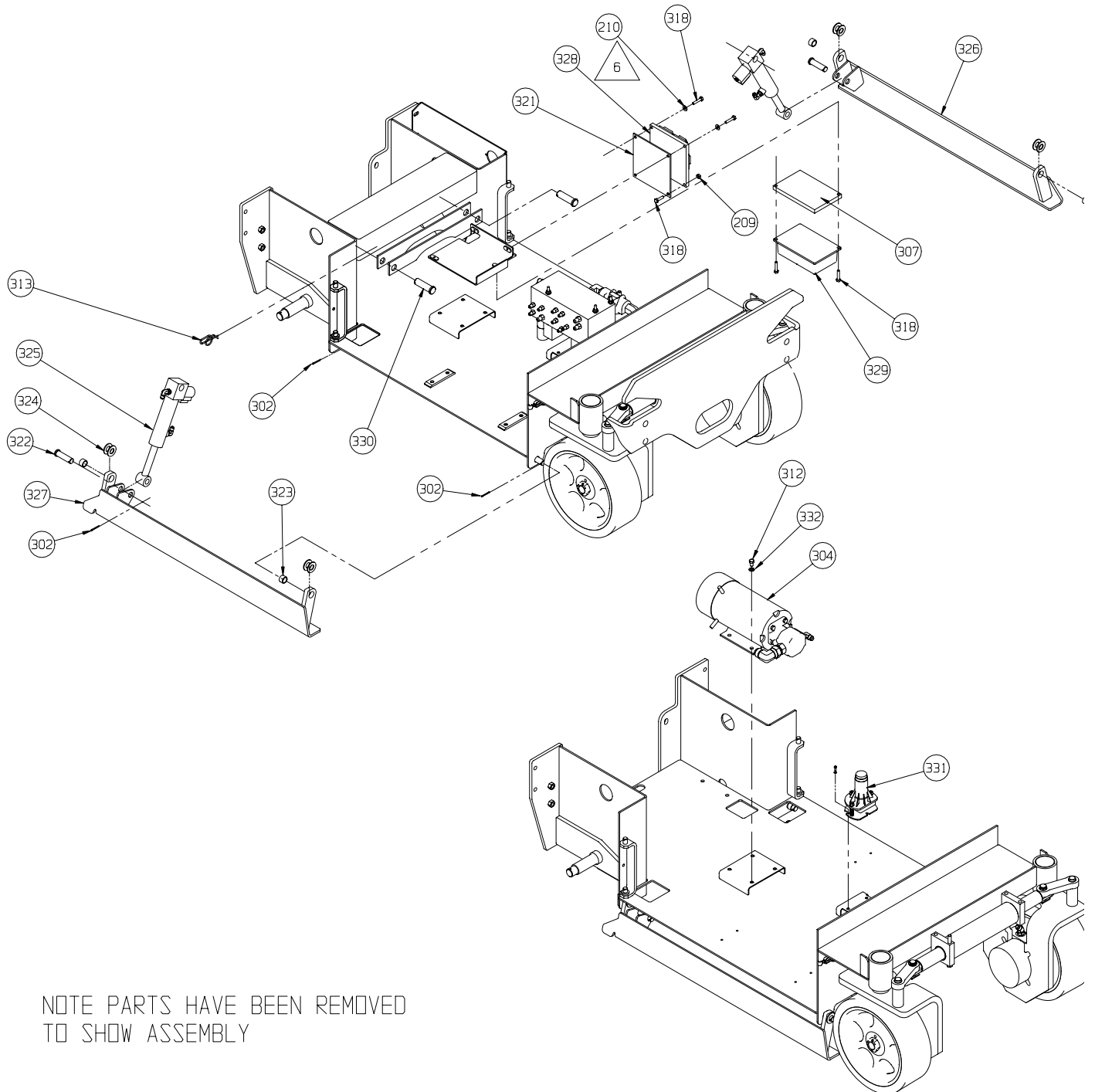


**Drawing #3 of 3**

ITEM	PART	DESCRIPTION	QTY	ITEM	PART	DESCRIPTION	QTY
302	011753-012	COTTER PIN 1/8 X 1 1/2	6	324	014996-010	WASHER 5/8 SAE FLAT PLATED	8
304	113055-000	POWER UNIT ASSEMBLY	1	325	113053-000	CYL. ASSY - DEPRESSION RAIL	2
307	065984-000	HEAT SINK	1	†326	065971-020	DEPRESSION RAIL WELDMENT L.H.	1
312	011254-004	SCREW HHC 3/8-16 X 1/2	4	†327	065971-021	DEPRESSION RAIL WELDMENT R.H.	1
313	011757-010	COTTER RUE RING	4	328	065709-001	CIRCUIT BOARD	1
318	012553-012	SCREW, SOCKET HD 1/4-20UNC X 1-1/2	2	329	065708-001	MOTOR CONTROL	1
‡321	065264-000	PLATE - CIRCUIT BOARD	1	330	011848-019	CLEVIS PIN 3/4 X 2 1/2	2
322	011848-036	CLEVIS PIN 5/8 X 2 1/4	2	331	(SEE FINAL)	LEVEL SENSOR	REF
323	011780-040	BEARING 5/8 X 13/16 X 1/2 LG	4	332	011240-006	3/8 FLAT WASHER	4

† Reference Only - components included in weldment kit.

‡ Reference Only - components included in paint kit.



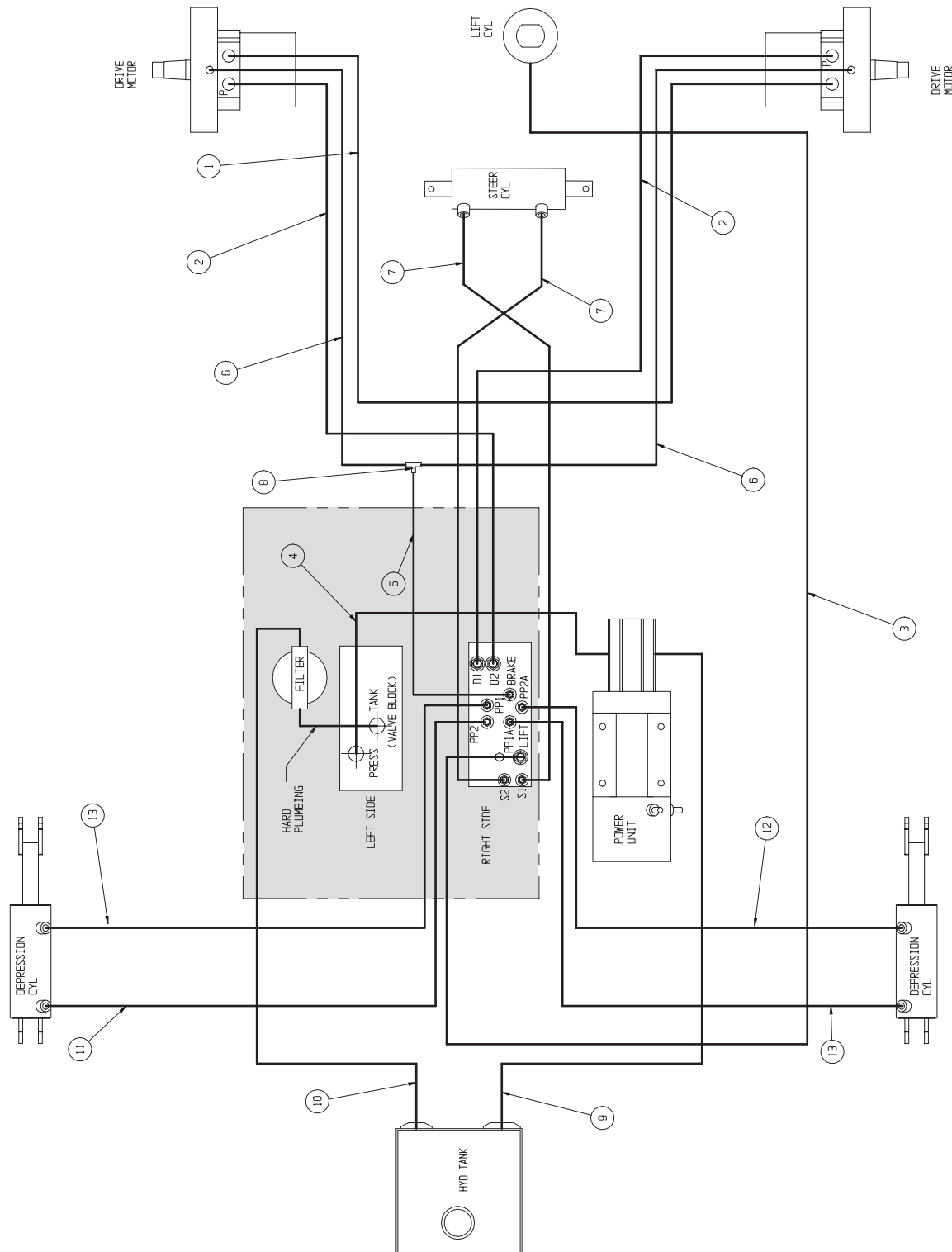
NOTE PARTS HAVE BEEN REMOVED  
TO SHOW ASSEMBLY

# Hose Kit Installation

## 113006-000

ITEM	PART	DESCRIPTION	QTY
1	114061-037	HOSE ASSY 3/8 X 37 (8FJX-8FJX)	1
2	113067-034	HOSE ASSY 3/8 X 34 (8FJX-6FJX X 90)	2
3	068965-150	HOSE ASSY 3/8 X 150 (6FJX-6FJX X 90)	1
4	107096-013	HOSE ASSY 3/8 X 13 (6FJX-6FJX X 90)	1
5	107090-013	HOSE ASSY 1/4 X 13 (4FJX-4FJX X 90)	1
6	107090-024	HOSE ASSY 1/4 X 24 (4FJX-4FJX X 90)	2
7	107095-031	HOSE ASSY 1/4 X 31 (4FJX-4FJX X 90)	2

ITEM	PART	DESCRIPTION	QTY
8	020032-001	TEE FITTING 4MJ-4MJ-4MJ	1
9	061789-017	HOSE ASSY 3/4 X 17 1/2 (12FJX-12MP)	1
10	064156-021	HOSE ASSY 1/2 X 42 (8FJX-8FJX)	1
11	107095-038	HOSE ASSY 1/4 X 38 (4FJX-4FJX90)	1
12	107095-032	HOSE ASSY 1/4 X 32 (4FJX-4FJX90)	1
13	107095-037	HOSE ASSY 1/4 X 37 (4FJX-4FJX90)	2

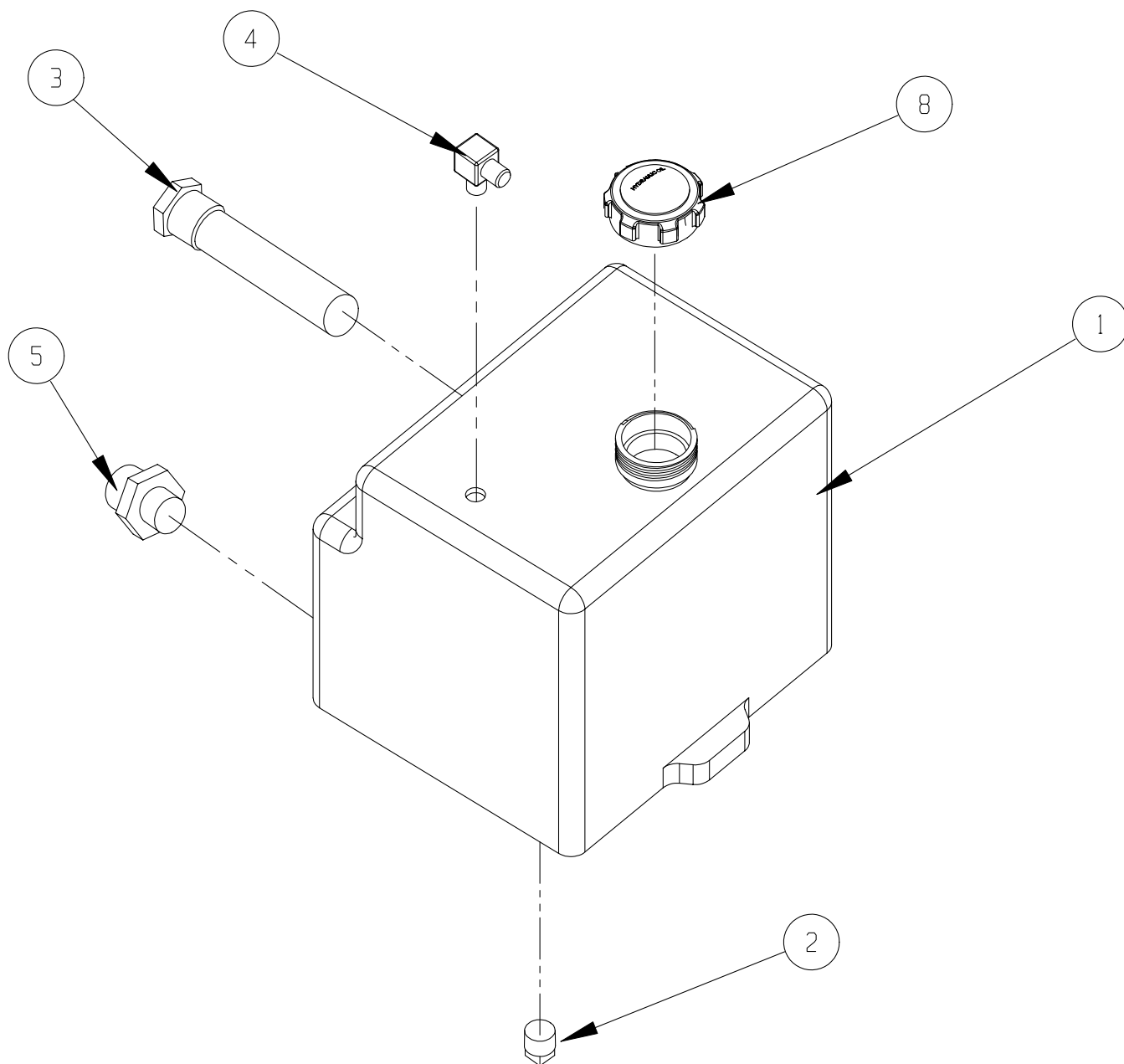




# Hydraulic Tank Assembly

## 101152-001

ITEM	PART	DESCRIPTION	QTY
1	101056-001	TANK, HYDRAULIC	1
2	021305-006	PLUG, MAGNETIC	1
3	061818-000	STRAINER, SUCTION	1
4	011940-006	FITTING ELBOW, 4MP-6MJ	1
5	011939-006	FITTING, 8MP-8MJ	1
8	068982-001	HYDRAULIC TANK LID	1

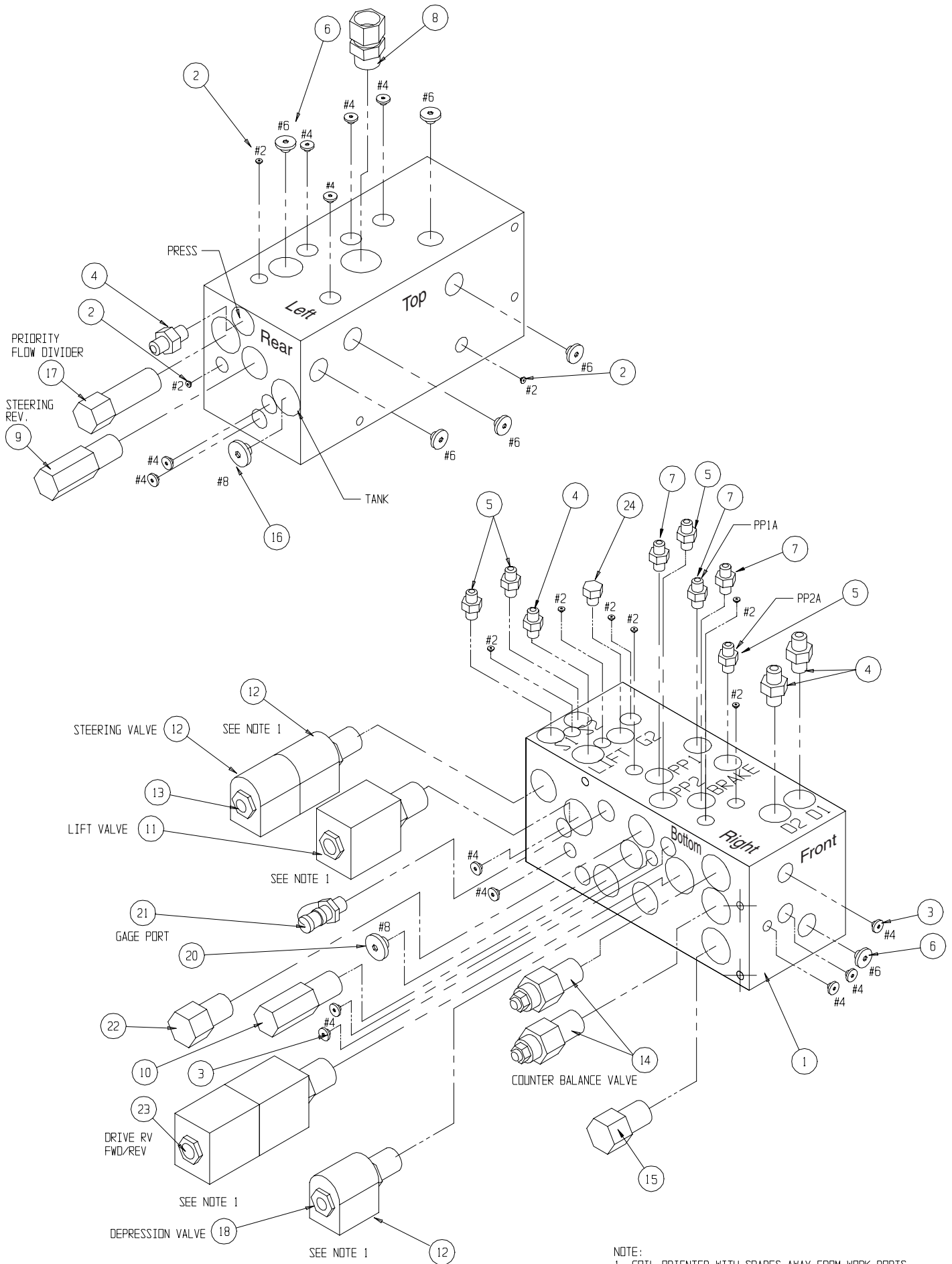


# Valve Block

## 101120-122

ITEM	PART	DESCRIPTION	QTY.
1	100020-040	CONTROL VALVE BLOCK	1
2	012004-002	FITTING #2 PLUG	9
3	012004-004	FITTING #4 PLUG	15
4	011941-005	FITTING STRAIGHT 6MB - 6MJ	4
5	011941-001	FITTING STR 4MBH - 4MJ	4
6	012004-006	FITTING PLUG #6	6
7	031006-004	FITTING STR 4MB-4MJ W/.031 ORIFICE	3
8	064170-005	FITTING 8MB-8FJX	1
9	060390-017	RELIEF VALVE, STEERING	1
10	060390-025	RELIEF VALVE, MAIN	1
11	063923-006	2 POS - 4 WAY SOLENOID W/ COIL	1
12	101120-033	COIL	2

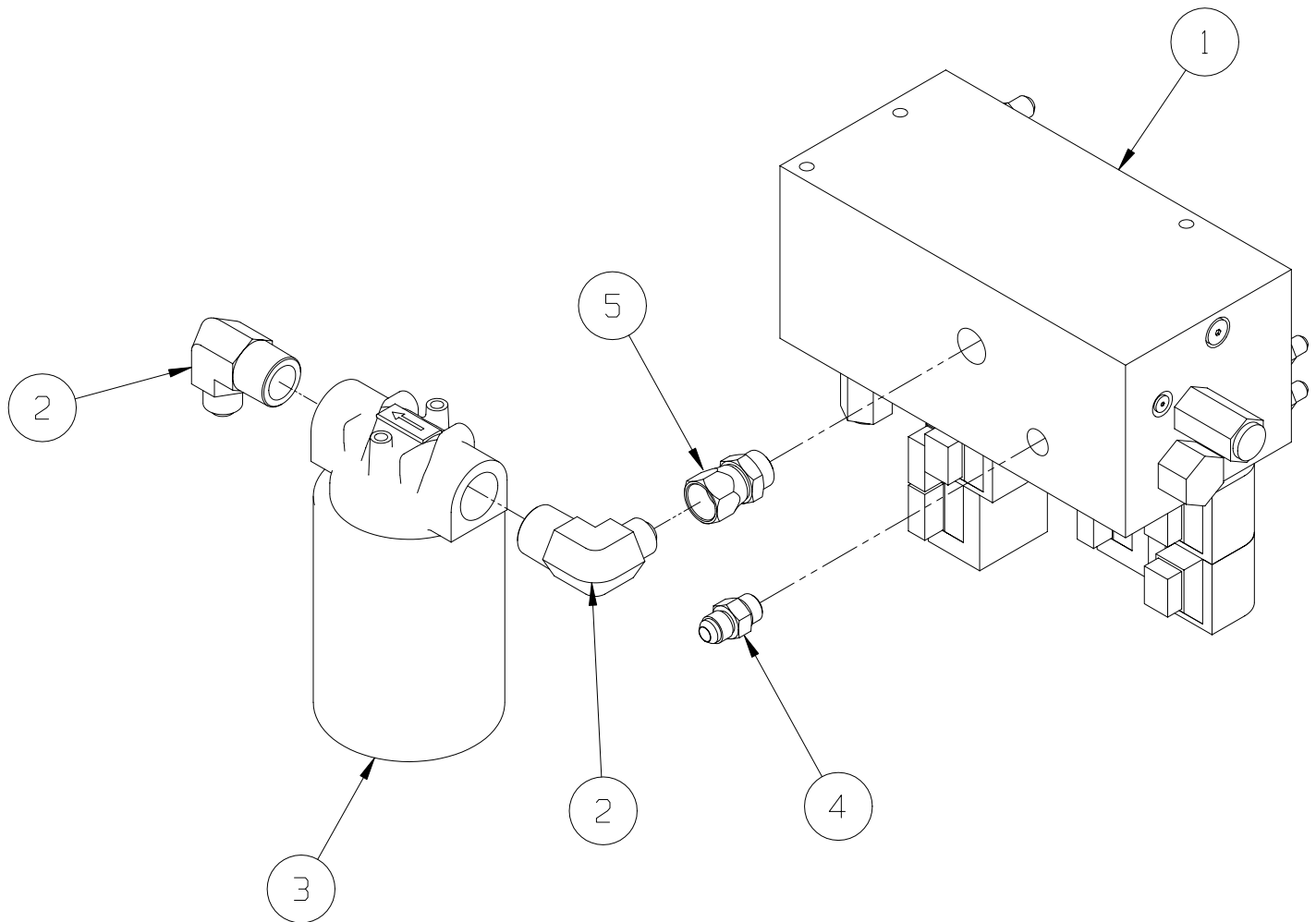
ITEM	PART	DESCRIPTION	QTY.
13	064845-000	3 POS - 4 WAY SOLENOID W/ COILS	1
14	101120-035	COUNTERBALANCE VALVE	2
15	060390-025	VALVE RELIEF	1
16	020021-008	FITTING PLUG #8	1
17	064843-000	FLOW DIVIDER VALVE	1
18	063973-001	2 POS POPPET VALVE W/ COIL	1
19	101120-033	COIL	1
20	012004-008	FITTING, #8 PLUG	1
21	063965-001	FITTING GAUGE	1
22	064841-000	CHECK VALVE	1
23	063923-021	3 POS - 4 WAY SOLENOID W/ COILS	1
24	020021-004	FITTING, HEX PLUG #4	1



# Valve Block Assembly

## 113052-000

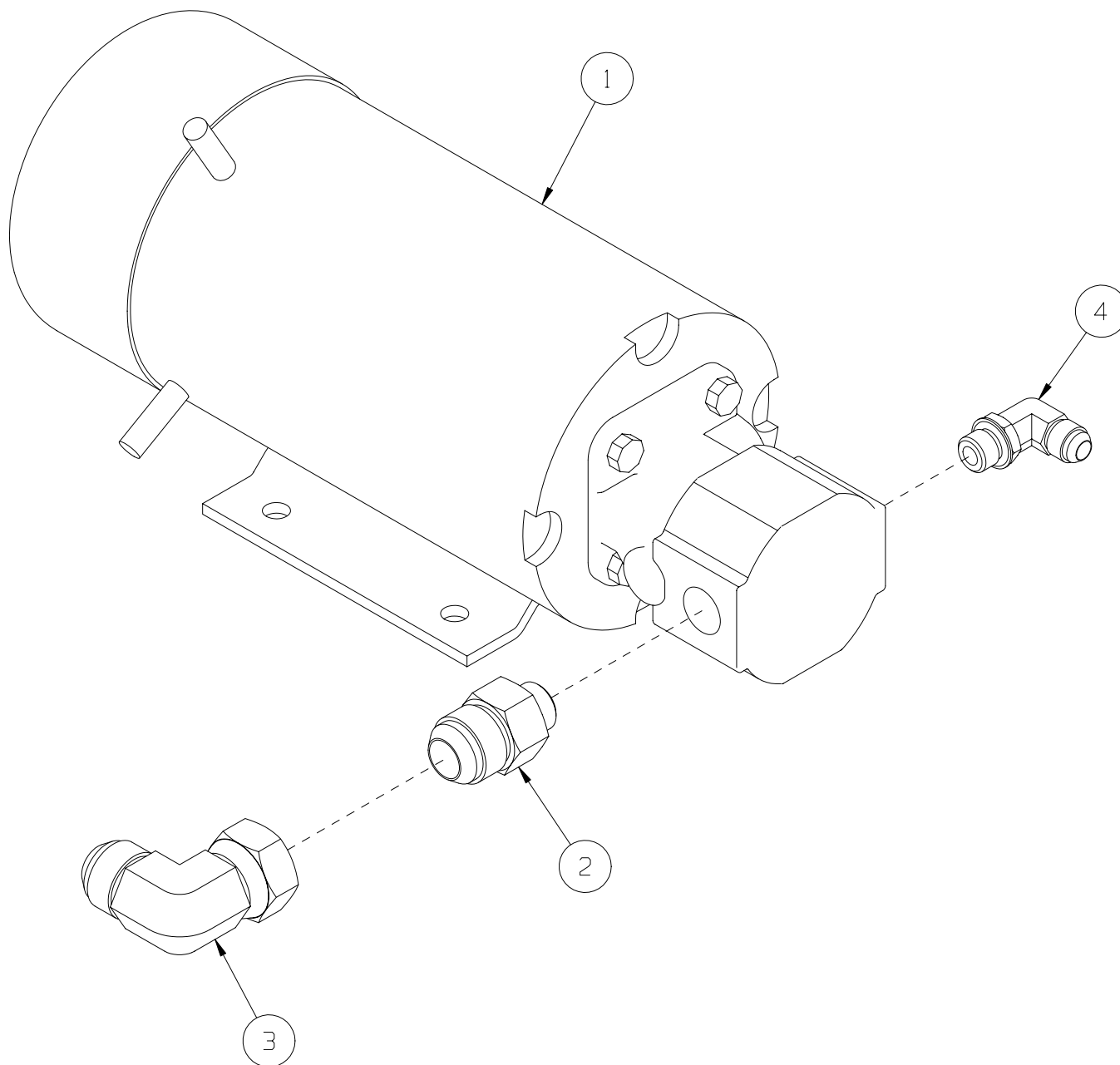
ITEM	PART	DESCRIPTION	QTY
1	101120-122	VALVE BLOCK ASSY.	1
2	011940-018	FITTING, 8MJ-12MP 90 DEG	2
3	005154-001	FILTER	1
4	011941-005	FITTING, 6MB-6MJ	1
5	064170-005	FITTING, 8MB-8FJX	1



# Power Unit Assembly

## 113055-000

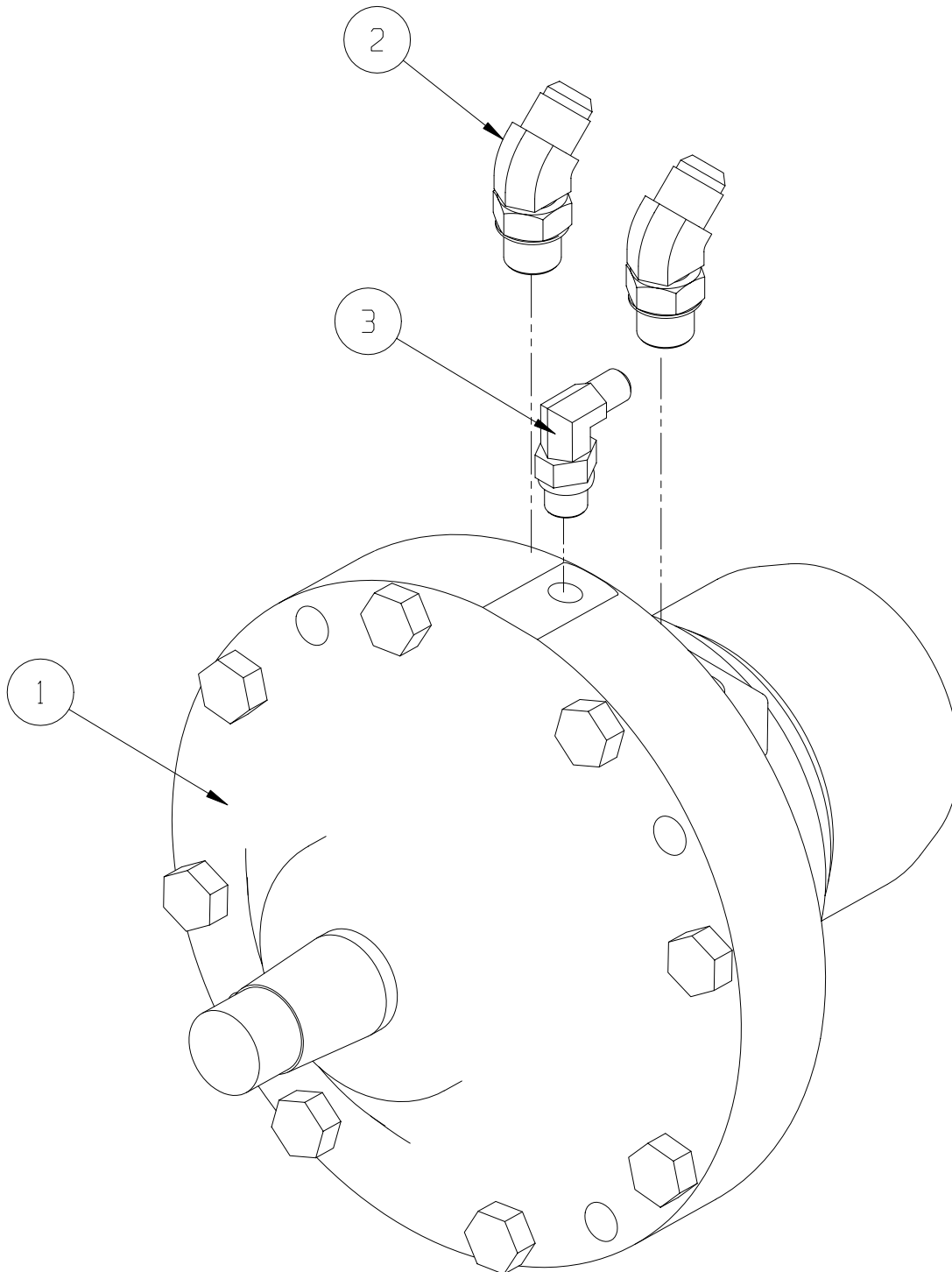
ITEM	PART	DESCRIPTION	QTY
1	101230-000	POWER UNIT	1
2	011941-012	FITTING, 8MB-12MJ	1
3	011937-007	FITTING, 12FJX-12MJ 90	1
4	011934-004	FITTING, 6MB-6MJ 90	1



# Drive Motor Assembly

## 113065-000

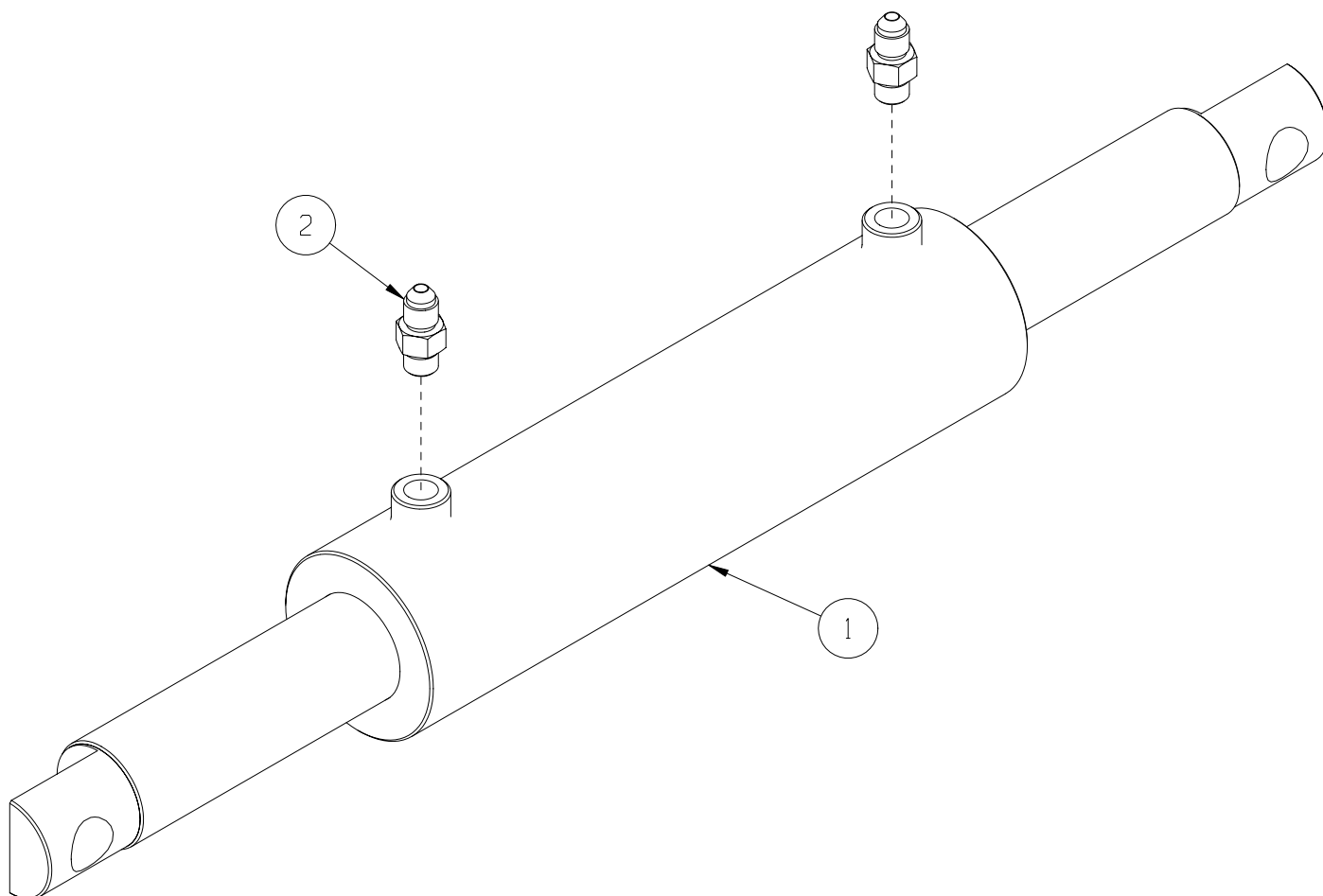
ITEM	PART	DESCRIPTION	QTY
1	113066-000	HYDRAULIC MOTOR / BRAKE	1
2	011935-004	FITTING, 6MB-6MJ45 FS	2
3	011934-001	FITTING, 4MB-4MJ90 FS	1



## Steering Cylinder Assembly

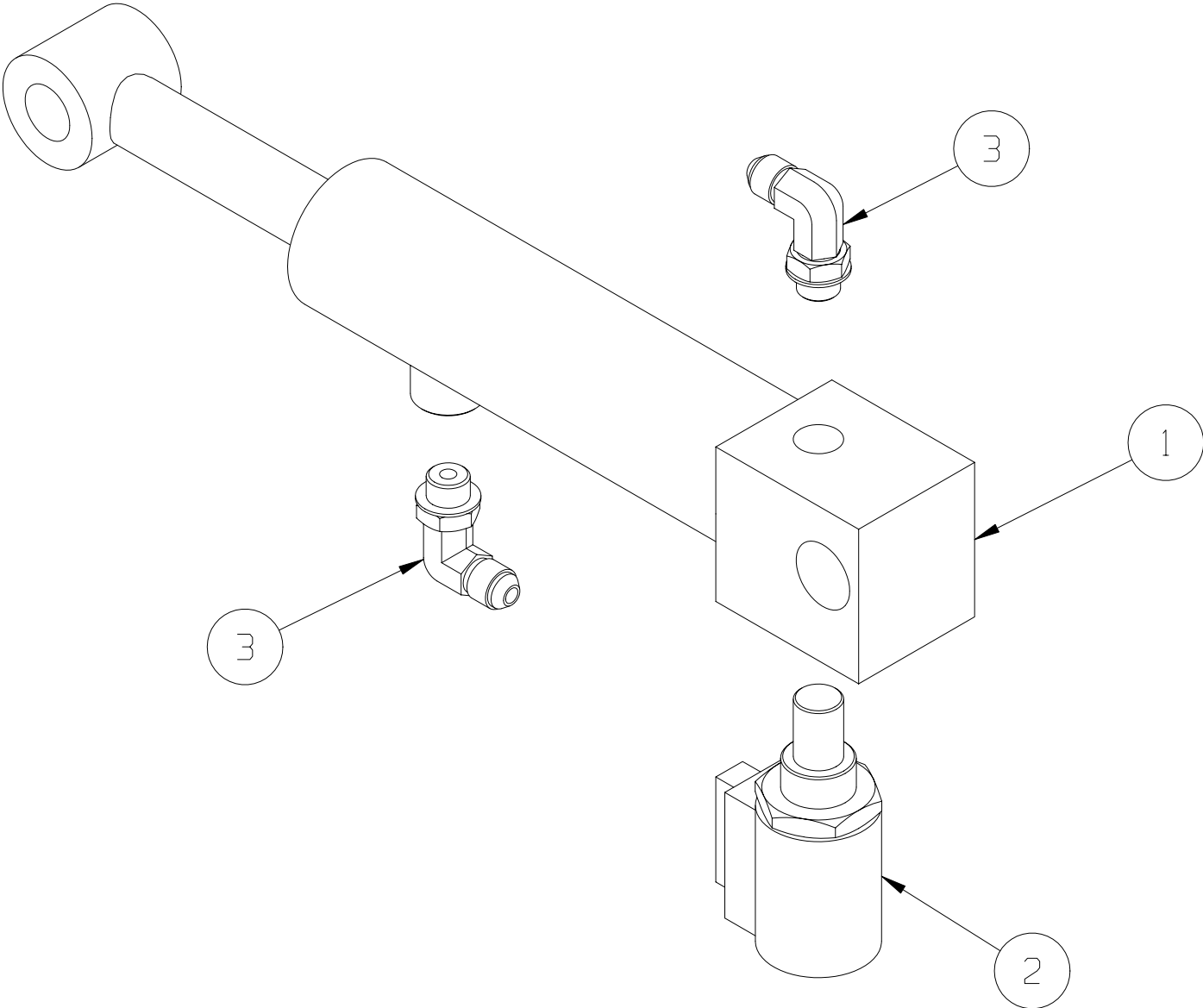
### 113051-000

ITEM	PART	DESCRIPTION	QTY
1	065371-000	STEERING CYLINDER	1
*	065371-011	SEAL KIT	*
2	011941-001	FITTING, 4MB-4MJ	2



**Depression Cylinder Assembly**  
**113053-000**

ITEM	PART	DESCRIPTION	QTY
1	065970-001	HYDRAULIC CYLINDER	1
*	065970-001	SEAL KIT	*
2	063973-001	VALVE, SOLENOID	1
3	011934-001	FITTING, 4MB-4MJ90	2





# Overload Alarm Option

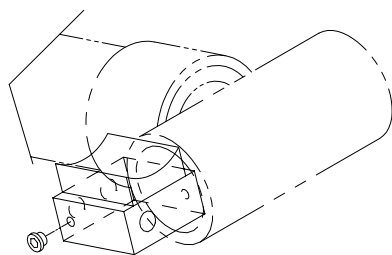
## 065720-020

ITEM	PART	DESCRIPTION	QTY
1	063921-004	PRESSURE SWITCH	1
2	029447-099	16 GA X 3 COND VINYL JACKET	16 FT.
3	029620-002	BUTT CONN 16-14	5

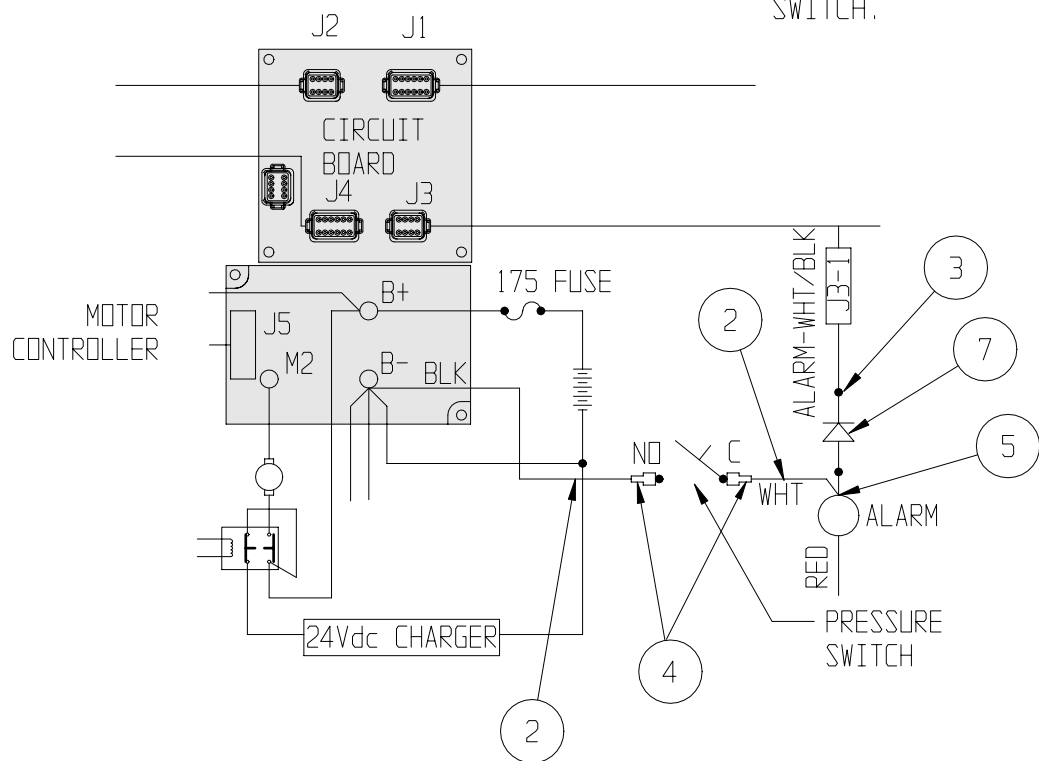
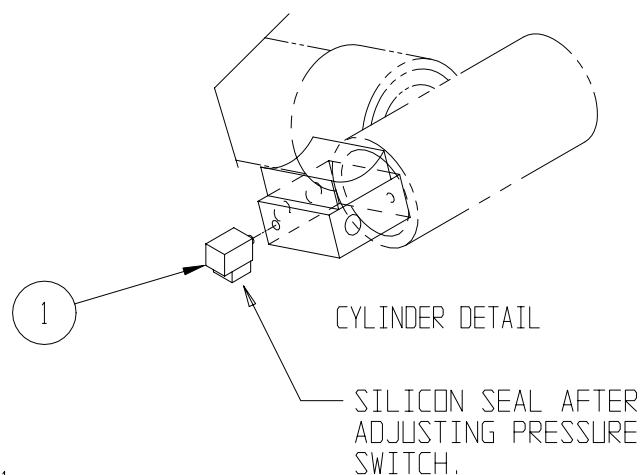
ITEM	PART	DESCRIPTION	QTY
4	029931-003	PUSH TERM./F .25 16-14	2
5	029610-002	FORK TERM. #8 16-14	3
6	029451-099	WIRE 16 AWG WHT	0.8 FT.
7	029825-002	DIODE	1

## NOTE:

1. SET PRESSURE SWITCH TO SOUND ALARM WHEN LIFT-OFF AT RATED LOAD.
2. SET LIFT RELIEF TO LIFT RATED LOAD PLUS 38 LBS.



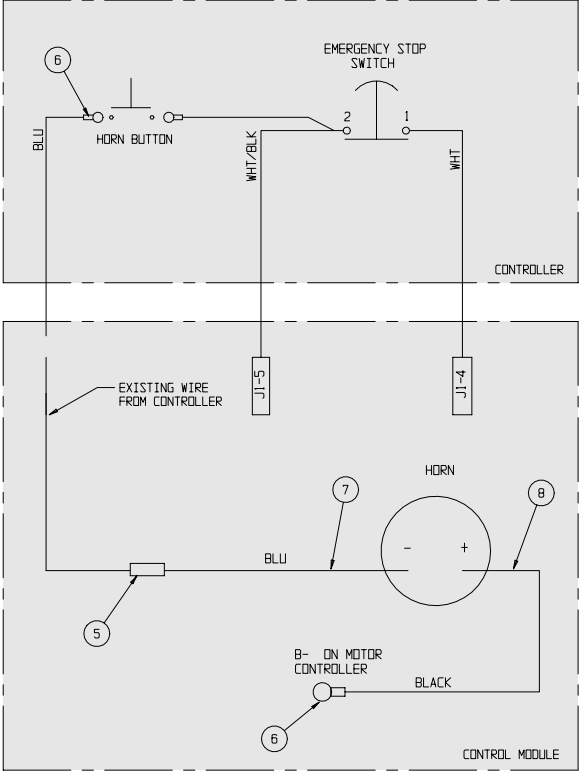
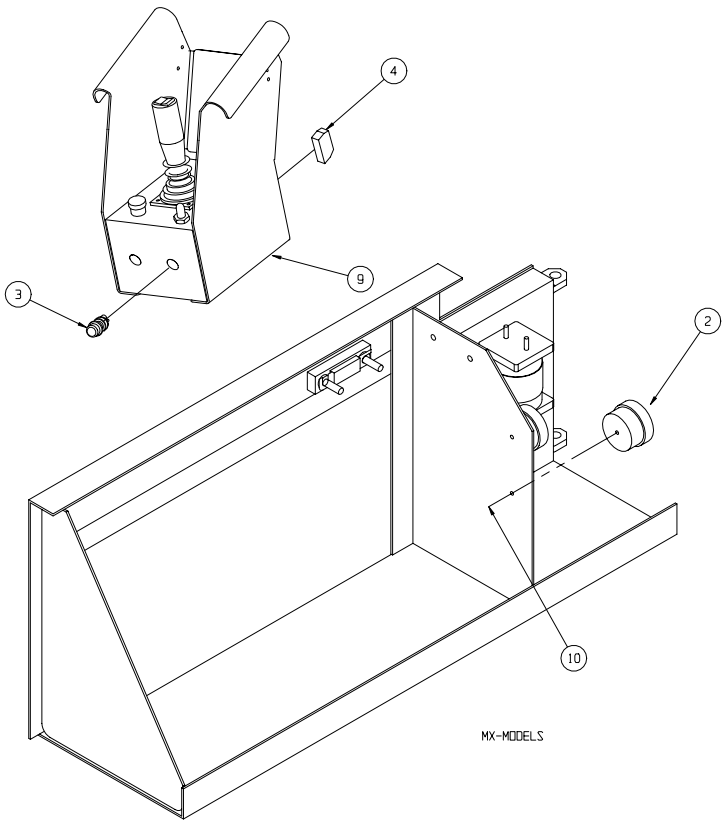
1. REMOVE EXISTING HARDWARE AS SHOWN AND RETURN TO STOCK.
2. REPLACE WITH ITEM # 1



Horn Assembly  
066614-020

ITEM	PART	DESCRIPTION	QTY
1	-	CONTROL MODULE ASSEMBLY	REF
2	066807-003	HORN, 24 VDC	1
3	066805-018	SWITCH, PUSH BUTTON 6E	1
4	066805-010	CONTACT BLOCK NO	1
5	029620-002	CONNECTOR, BUTT 16-14 GA	1

ITEM	PART	DESCRIPTION	QTY
6	029601-013	CONNECTOR, RING TERMINAL	4
7	029453-099	WIRE, 16 AWG BLUE	4 FT
8	029452-099	WIRE, 16 AWG BLACK	4 FT
9	-	CONTROLLER ASSY	REF
10	011252-006	SCREW HHC 1/4-20 X 3/4	1





# Removable Controller Option

## 061898-001

ITEM	PART	DESCRIPTION	QTY
1	028800-003	PLUG CONNECTOR (FEMALE)	1
2	028800-004	PIN CONTACT (MALE)	15
3	028800-015	PLUG SEALING	16
4	028800-016	RECEPTACLE CONNECTOR W/ CLAMP (MALE)	1
5	028800-005	SOCKET CONTACT (FEMALE)	15

ITEM	PART	DESCRIPTION	QTY
8	030719-001	110 VAC BRACKET	1
9	030719-002	AIR BRACKET WELDMENT	1
10	011254-016	SCREW HHC GRD5 3/8-16UNC X 2	4
11	011240-006	WASHER 3/8 STD FLAT	4
12	011248-006	NUT HEX ESNA 3/8-16	2

### NOTES

1. CUT OFF CONTROL CABLE 14 INCHES BELOW STRAIN RELIEF ON CONTROLLER.
2. CUT OUTER CABEL COVER OF LINKAGE CABEL BACK APPROXIMATELY 1-1/2 INCH AND STRIP APPROXIMATELY 1/4 INCH OF EACH END.
3. CRIMP SOCKETS (28800-005) ONTO WIRE ENDS AND INSERT INTO CONNECTOR (28800-016). REF. VIEW B-B.
4. CUT OUTER CABEL COVER OF CONTROLLER END BACK APPROXIMATELY 1-1/2 INCH AND STRIP APPROXIMATELY 1/4 INCH OF EACH END.
5. SLIDE BOOT AND CLAMP ONTO CABLE.
6. CRIMP PINS (28800-004) ONTO WIRE ENDS AND INSERT INTO CONNECTOR (28800-003). REF. VIEW C-C.
7. CLAMP BOOT TO CONNECTOR.
8. CONNECT CONTROLLER AND TEST MACHINE FOR PROPER FUNCTION.
9. USE TERMINAL " H " FOR HORN OPTION OR IF AUX WIRE IS REQUIRED.
10. ITEM #8 THRU 12 REQD ONLY FOR 110 VAC AND/OR AIR TO PLATFORM.

110 VAC TO PLATFORM

(8) (12) (11) (10)

(11) (10)

(11) (10)

(11) (10)

(11) (10)

(11) (10)

(11) (10)

(11) (10)

(11) (10)

(11) (10)

(11) (10)

(11) (10)

(11) (10)

(11) (10)

(11) (10)

(11) (10)

(11) (10)

(11) (10)

(11) (10)

(11) (10)

(11) (10)

(11) (10)

(11) (10)

(11) (10)

(11) (10)

(11) (10)

(11) (10)

(11) (10)

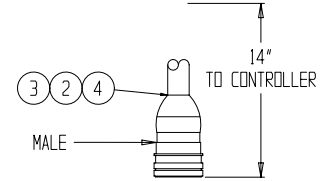
(11) (10)

(11) (10)

(11) (10)

AIR TO PLATFORM

SEE NOTE #10



MALE

FEMALE

(3) (2) (4)

(3) (5) (1)

(3) (5) (1)

(3) (5) (1)

(3) (5) (1)

(3) (5) (1)

(3) (5) (1)

(3) (5) (1)

(3) (5) (1)

(3) (5) (1)

(3) (5) (1)

(3) (5) (1)

(3) (5) (1)

(3) (5) (1)

(3) (5) (1)

(3) (5) (1)

(3) (5) (1)

(3) (5) (1)

(3) (5) (1)

(3) (5) (1)

(3) (5) (1)

(3) (5) (1)

(3) (5) (1)

(3) (5) (1)

(3) (5) (1)

(3) (5) (1)

(3) (5) (1)

(3) (5) (1)

(3) (5) (1)

(3) (5) (1)

(3) (5) (1)

(3) (5) (1)

(3) (5) (1)

(3) (5) (1)

(3) (5) (1)

(3) (5) (1)

(3) (5) (1)

(3) (5) (1)

(3) (5) (1)

(3) (5) (1)

(3) (5) (1)

(3) (5) (1)

(3) (5) (1)

(3) (5) (1)

(3) (5) (1)

(3) (5) (1)

(3) (5) (1)

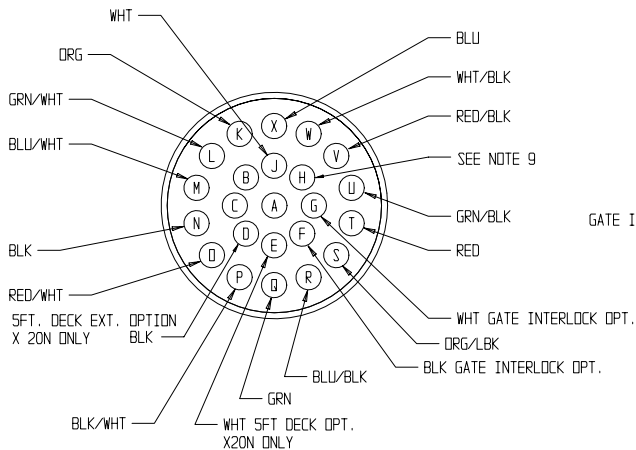
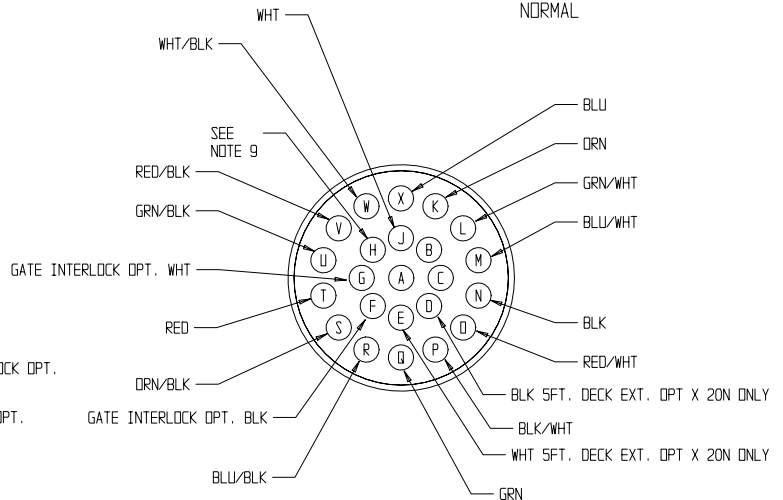
(3) (5) (1)

(3) (5) (1)

(3) (5) (1)

(3) (5) (1)

ROUTE SAME AS NORMAL

VIEW B-B  
MODULE ENDVIEW C-C  
CONTROLLER END

---

**NOTES:**

---

## Label Installation - MX15

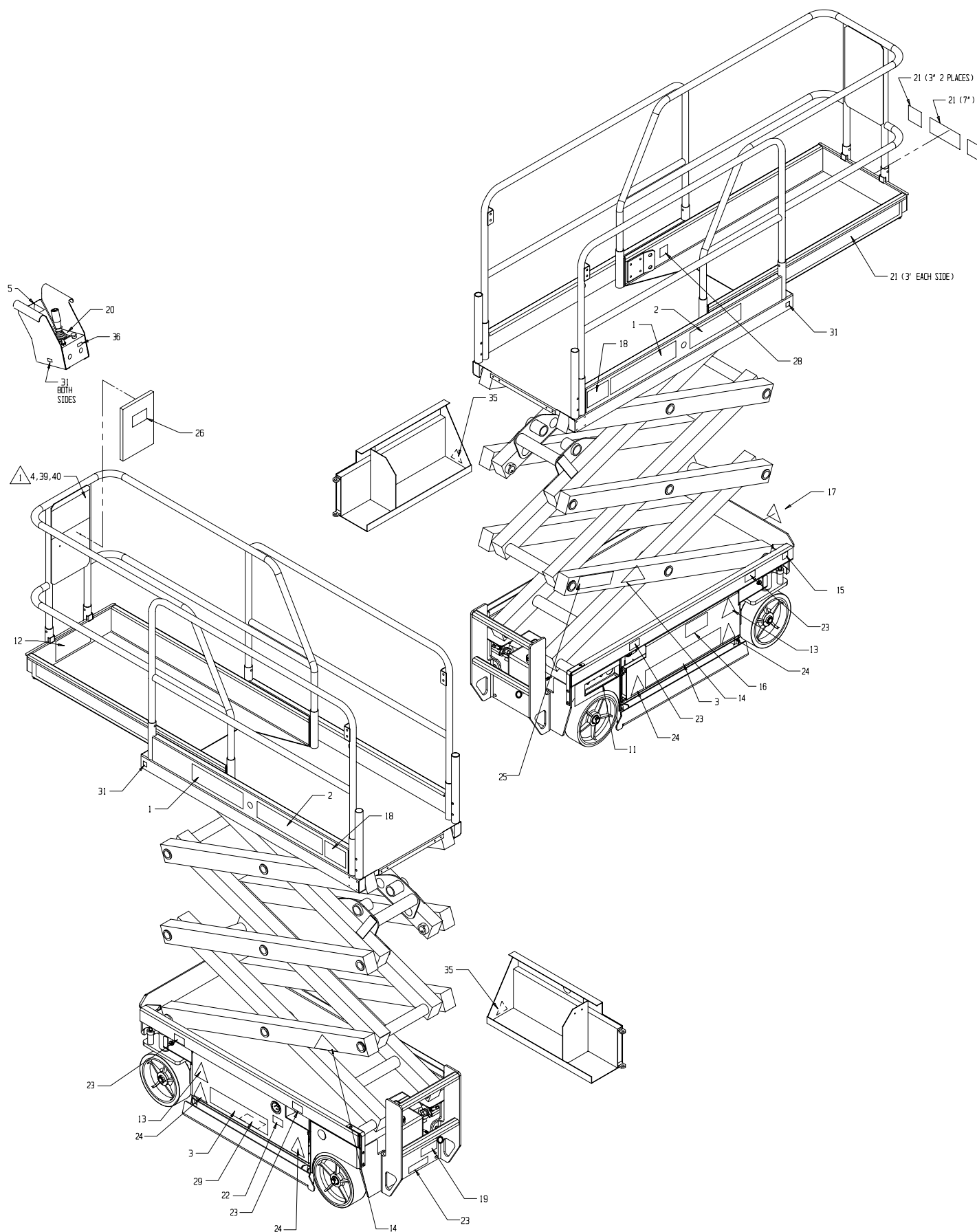
### 065612-034

## Label Installation - MX19

### 065712-034

ITEM	PART	DESCRIPTION	QTY
1	061683-004	LABEL UPRIGHT	2
2	061684-022	LABEL MX 15	2
3	061683-014	LABEL UPRIGHT	2
4	067195-001	LABEL INSTRUCTIONS	1
5	100102-900	LABEL NOT INSULATED	1
11	066559-900	LABEL CONTROLS	1
12	066551-950	LABEL MAX LOAD DECK EXT	1
13	101210-000	LABEL WARNING BATTERIES	2
14	101208-000	LABEL WARNING PINCH POINT	2
15	030768-001	LABEL CE	1
16	107051-900	LABEL, BATTERY DISCONNECT	1
17	066556-900	LABEL CAUTION	1
18	066557-952	LABEL MAX LOAD PLATFORM	2
19	005223-906	LABEL EMERG. LOWERING	1
20	101222-904	LABEL CONTROLLER	1
21	064936-099	TAPE REFLECTIVE	7.08 FT.
22	066522-900	LABEL BATTERY CHARGER	1
23	014222-903	LABEL FORK-LIFT HERE	5
24	101208-001	LABEL WARNING	4
25	063255-901	LABEL SCISSOR BRACE	1
26	010076-901	LABEL INST.	1
28	068635-001	LABEL HARNESS HARDPOINT	1
29	061205-003	NAME PLATE	1
31	064444-000	LABEL USA	4
35	062562-951	LABEL DANGER	2
36	107053-000	LABEL HORN	1
39	067195-201	LABEL INSTRUCTIONS (GERMAN)	1
40	067195-301	LABEL INSTRUCTIONS (FRENCH)	1

ITEM	PART	DESCRIPTION	QTY
1	061683-004	LABEL UPRIGHT	2
2	061684-023	LABEL MX 19	2
3	061683-014	LABEL UPRIGHT	2
4	067195-001	LABEL INSTRUCTIONS	1
5	100102-900	LABEL NOT INSULATED	1
11	066559-900	LABEL CONTROLS	1
12	066551-950	LABEL MAX LOAD DECK EXT	1
13	101210-000	LABEL WARNING BATTERIES	2
14	101208-000	LABEL WARNING PINCH POINT	2
15	030768-001	LABEL CE	1
16	107051-900	LABEL BATTERY DISCONNECT	1
17	066556-900	LABEL CAUTION	1
18	066557-951	LABEL MAX LOAD PLATFORM	2
19	005223-906	LABEL EMERG. LOWERING	1
20	101222-904	LABEL CONTROLLER	1
21	064936-099	TAPE REFLECTIVE	7.08 FT.
22	066522-900	LABEL BATTERY CHARGER	1
23	014222-903	LABEL FORK-LIFT HERE	5
24	101208-001	LABEL WARNING	4
25	063255-901	LABEL SCISSOR BRACE	1
26	010076-901	LABEL INST.	1
28	068635-001	LABEL HARNESS HARDPOINT	1
29	061205-003	NAME PLATE	1
31	064444-000	LABEL USA	4
35	062562-951	LABEL DANGER	2
36	107053-000	LABEL HORN	1
39	067195-201	LABEL INSTRUCTIONS (GERMAN)	1
40	067195-301	LABEL INSTRUCTIONS (FRENCH)	1



---

**NOTES:**

---



# **UpRight**

Call Toll Free in U.S.A.  
1-800-926-LIFT

---

**UpRight, Inc.**

801 South Pine Street  
Madera, California 93637

TEL: 559-662-3900

FAX: 559-673-6184

PARTS: 1-888-UR-PARTS

PARTS FAX: 1-800-669-9884

**UpRight**

Call Toll Free in U.S.A.

**1-800-926-LIFT**

P/N 113102-020

11-02

**UpRight**

Unit S1, Park West Industrial Park

Friel Avenue

Nangor Road

Dublin 12, Ireland

TEL: +353 1 620 9300

FAX: +353 1 620 9301